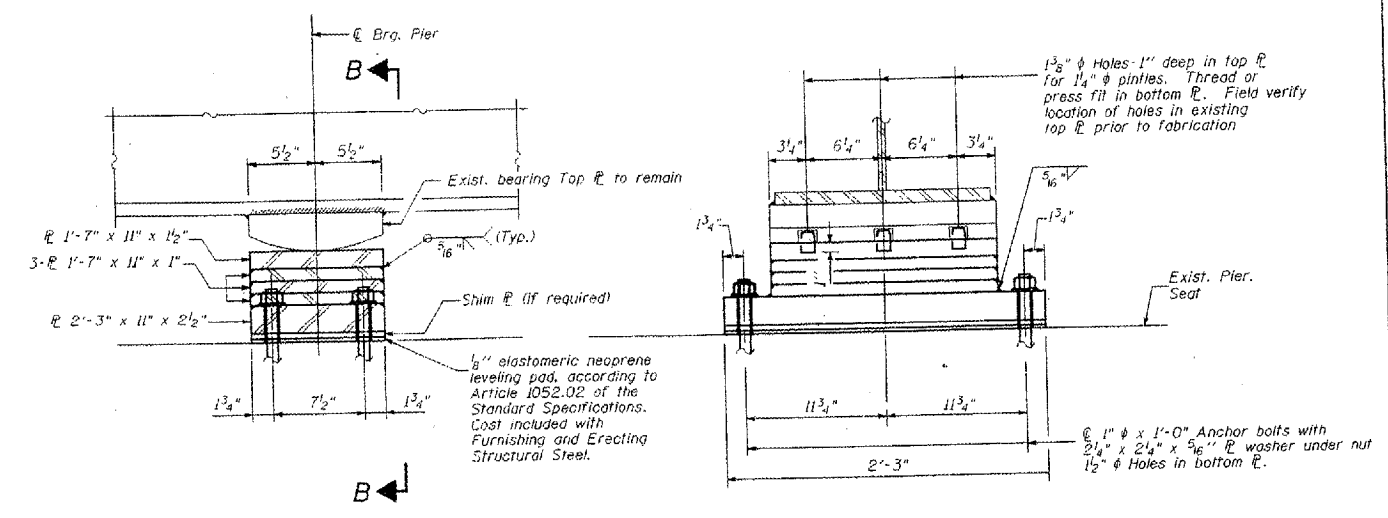


SECTION A-A

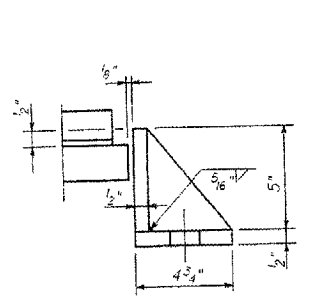


ELEVATION AT PIER

SECTION B-B

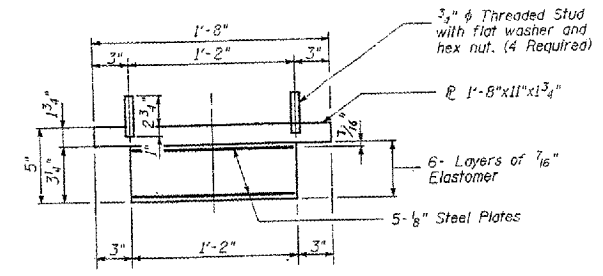
ELEVATION AT ABUT.
(all dimensions are along beam fl unless noted)

(all dimensions are along beam fl unless noted)

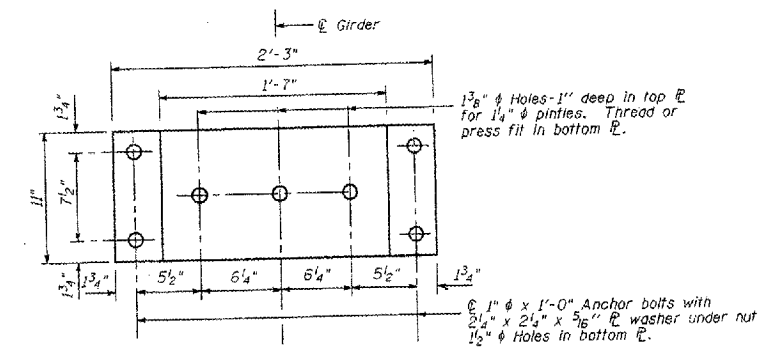


SIDE RETAINER

Equivalent rolled angle with stiffeners will be allowed in lieu of welded plates. Weight included with Furnishing and Erecting Structural Steel.

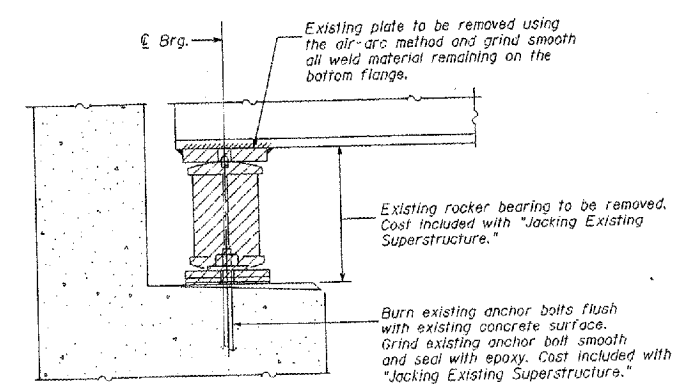


DETAIL OF PINTLE

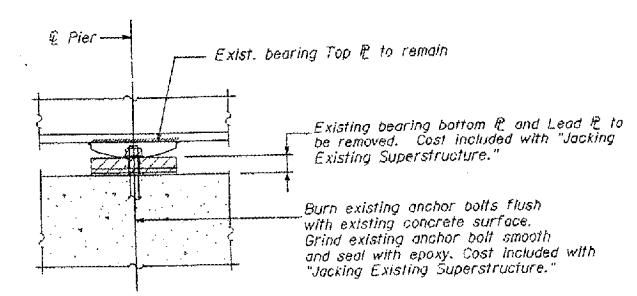


PLAN

FIXED BEARING AT PIER
(12 Required)



EXISTING BEARING AT ABUTMENT
REMOVAL DETAIL



EXISTING BEARING AT PIER
REMOVAL DETAIL

BILL OF MATERIAL

ITEM	UNIT	TOTAL
Elastomeric Bearing Assembly, Type I	Each	24

NOTES:

- Anchor bolts shall be set prior to pouring bearing pedestals.
- Anchor bolts of fixed bearings may be built into the masonry. See Sheet 23 of 32 for Anchor Bolt Installation.
- Cost of removal of existing bearings included with "Jacking Existing Superstructure."

TYPE I ELASTOMERIC EXP. BRG.
(24 Required)

CMT
CRAWFORD MURPHY & TILLY, INC.
CONSULTING ENGINEERS
SPRINGFIELD, IL ■ AURORA, IL ■ ST. LOUIS, MO
ROCKFORD, IL ■ PEORIA, IL ■ CHICAGO, IL

CONTRACT 72A70
SN 084-0116
EXISTING BRIDGE PLANS
FOR INFORMATION ONLY
(NOT TO SCALE)