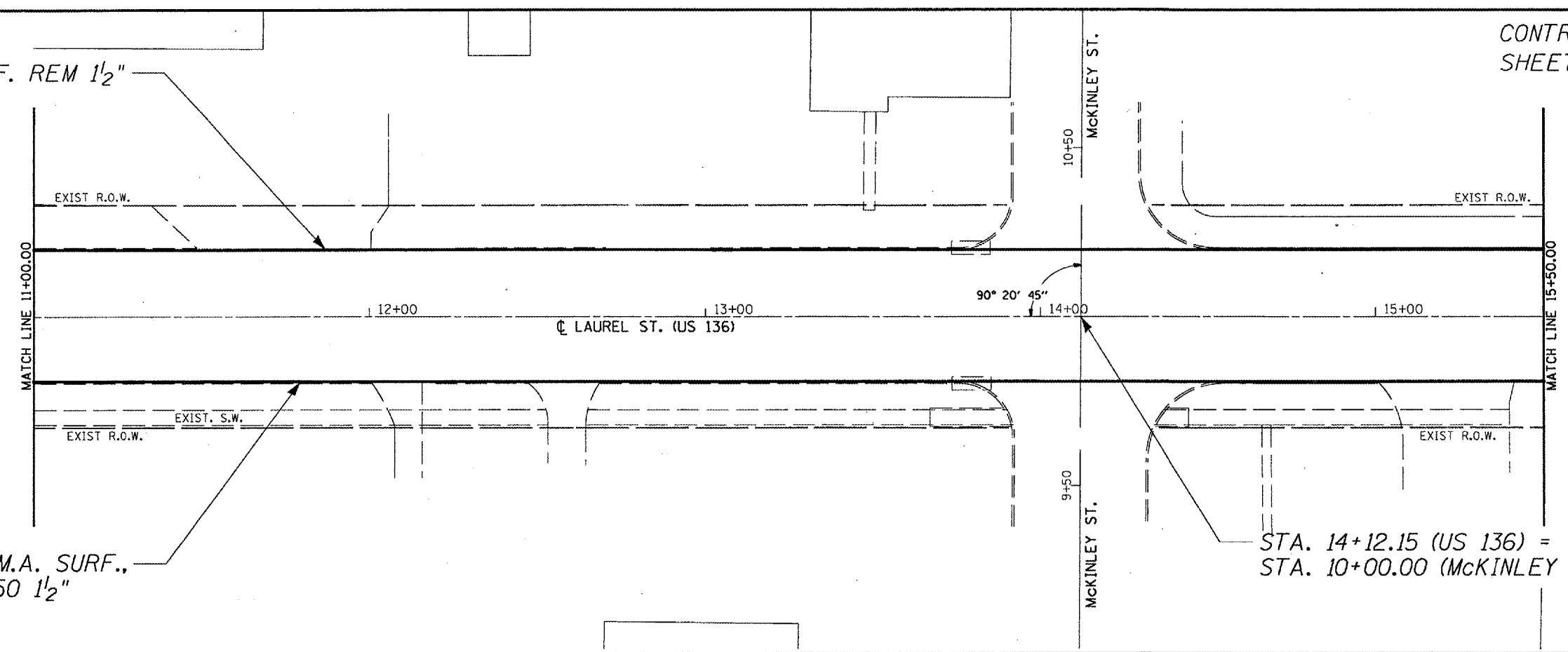


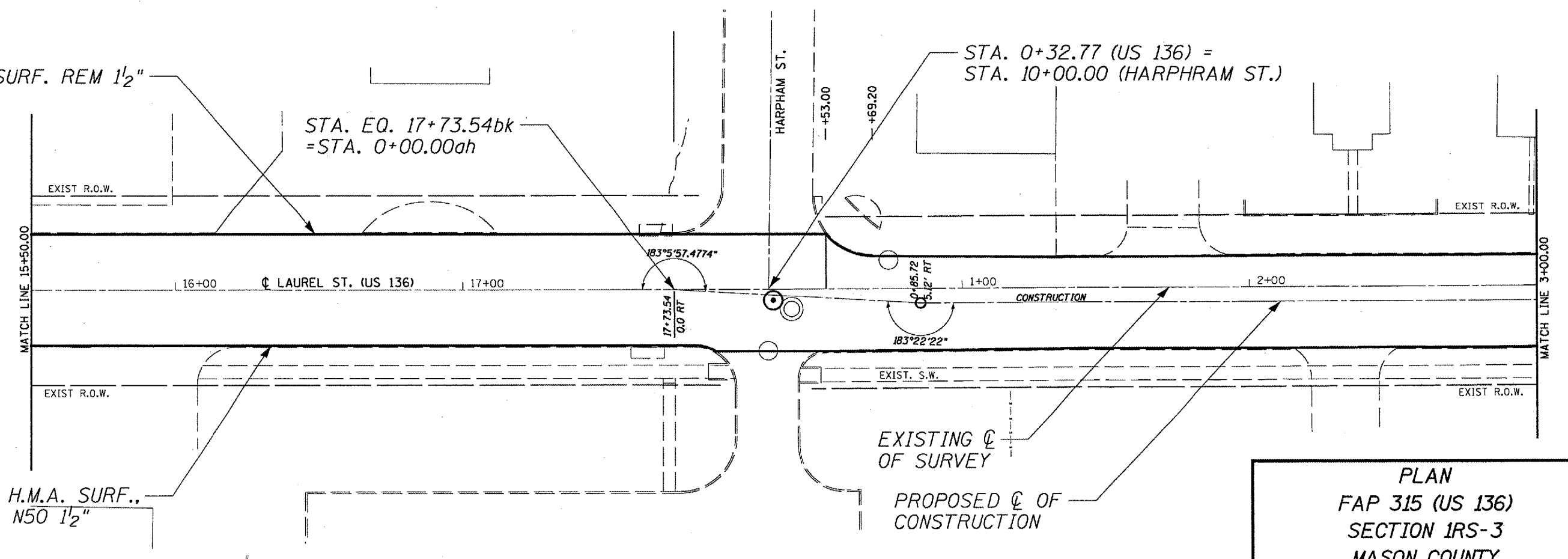
PROP. H.M.A. SURF. REM 1/2"



PROP. H.M.A. SURF.,  
MIX C, N50 1/2"

STA. 14+12.15 (US 136) =  
STA. 10+00.00 (McKINLEY ST.)

PROP. H.M.A. SURF. REM 1/2"



PROP. H.M.A. SURF.,  
MIX C, N50 1/2"

EXISTING &  
OF SURVEY

PROPOSED &  
OF CONSTRUCTION

PLAN  
FAP 315 (US 136)  
SECTION 1RS-3  
MASON COUNTY