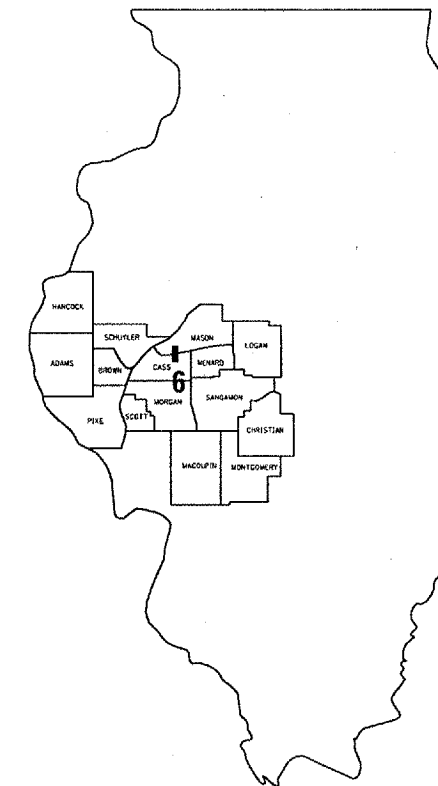


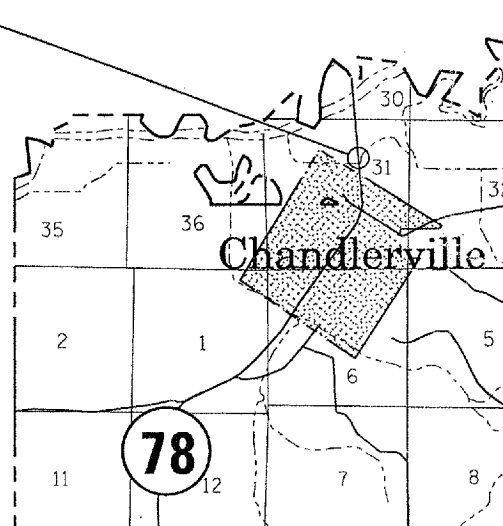
FOR INDEX OF SHEETS AND HIGHWAY
STANDARDS, SEE SHEET 2.

STATE OF ILLINOIS
DEPARTMENT OF TRANSPORTATION
DIVISION OF HIGHWAYS
**PROPOSED
HIGHWAY PLANS**
FAP ROUTE 614 (IL 78)
SECTION (144BR)I-2
CASS COUNTY
C-96-541-07 /D-96-521-07



LOCATION OF SECTION INDICATED THUS: ■

SN 009-0006



J. U. L. I. E.
JOINT UTILITY LOCATION INFORMATION FOR EXCAVATION
1-800-892-0123

BRIDGE INSPECTION ENGINEER: DAVE COPENBARGER
PHONE: (217) 785-5306

NET LENGTH OF SEC 1012 FT=0.19 MILE

CONTRACT NO. 72A93

STATE OF ILLINOIS
DEPARTMENT OF TRANSPORTATION
DIVISION OF HIGHWAYS

SUBMITTED JAN. 8, 20 07
Christ M. Reed
DEPUTY DIRECTOR OF HIGHWAYS, REGION FOUR ENGINEER

February 2, 20 07
Eric E. Harms
INTERIM ENGINEER OF DESIGN AND ENVIRONMENT

February 2, 20 07
Milton R. Sees, P.E.
DIRECTOR, DIVISION OF HIGHWAYS

INDEX




STANDARDS

1	COVER SHEET
2	INDEX, STANDARDS, & GENERAL NOTES
3	SUMMARY OF QUANTITIES
4	TRAFFIC CONTROL DETAIL
5	BRIDGE PLAN

701001-01
701006-02
701201-02
701316-03

GENERAL NOTES:

PLAN DIMENSIONS AND DETAILS RELATIVE TO EXISTING STRUCTURE HAVE BEEN TAKEN FROM EXISTING PLANS AND ARE SUBJECT TO NOMINAL CONSTRUCTION VARIATIONS. IT SHALL BE THE CONTRACTOR'S RESPONSIBILITY TO VERIFY SUCH DIMENSIONS AND DETAILS IN THE FIELD AND MAKE NECESSARY APPROVED ADJUSTMENTS PRIOR TO CONSTRUCTION OR ORDERING OF MATERIALS. SUCH VARIATIONS SHALL NOT BE CAUSE FOR ADDITIONAL COMPENSATION OR A CHANGE IN THE SCOPE OF WORK, HOWEVER, THE CONTRACTOR WILL BE PAID FOR THE QUANTITY ACTUALLY FURNISHED AT THE UNIT PRICE FOR THE WORK.

STATE OF ILLINOIS DEPARTMENT OF TRANSPORTATION DIVISION OF HIGHWAYS DISTRICT 6	
EXAMINED	December 27 20 06
 ENGINEER OF OPERATIONS	
EXAMINED	Jan 4 20 07
 ENGINEER OF PROGRAM IMPLEMENTATION	
EXAMINED	DECEMBER 27 20 06
 ENGINEER OF PROGRAM DEVELOPMENT	

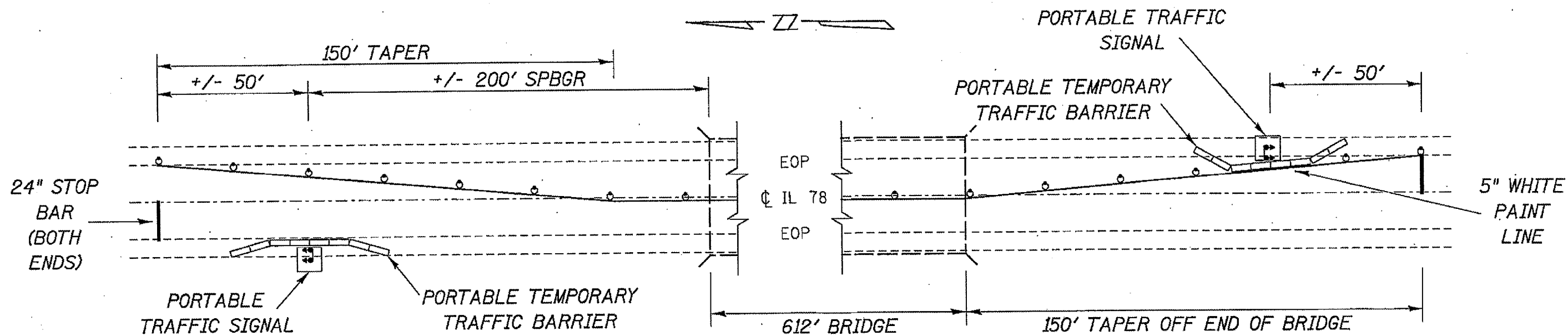
INDEX & GENERAL NOTES
FAS 614 (IL 78)
SECTION (144BR)I-2
CASS COUNTY

SUMMARY OF QUANTITIES

PAY ITEM NUMBER	DESCRIPTION	UNIT	100% STATE SFTY-2A	TOTAL QTY.
50500405	FURNISHING AND ERECTING STRUCTURAL STEEL	POUND	75,420	75,420
67100100	MOBILIZATION	L SUM	1	1
70100450	TRAFFIC CONTROL AND PROTECTION, STANDARD 701201	L SUM	1	1
70100900	TRAFFIC CONTROL AND PROTECTION, STANDARD 701316 (SPECIAL)	EACH	1	1
* 78001120	PAINT PAVEMENT MARKING - LINE 5"	FOOT	1012	1012
78300105	PAVEMENT MARKING REMOVAL	FOOT	75	75
X0324401	PORTABLE TEMPORARY BARRIER SYSTEM, TL-3	FOOT	104	104
X7015200	PORTABLE TRAFFIC SIGNALS	L SUM	1	1
* 80501000	SERVICE INSTALLATION (SPECIAL)	EACH	1	1

* SPECIALTY ITEMS

SUMMARY OF QUANTITIES
FAS 614 (IL 78)
SECTION (144BR)I-2
CASS COUNTY



SIGNAL PLACEMENT AND STRIPING DETAIL

SYMBOLS

- DRUM WITH STEADY BURNING LIGHT
- ◀ TRAFFIC SIGNAL

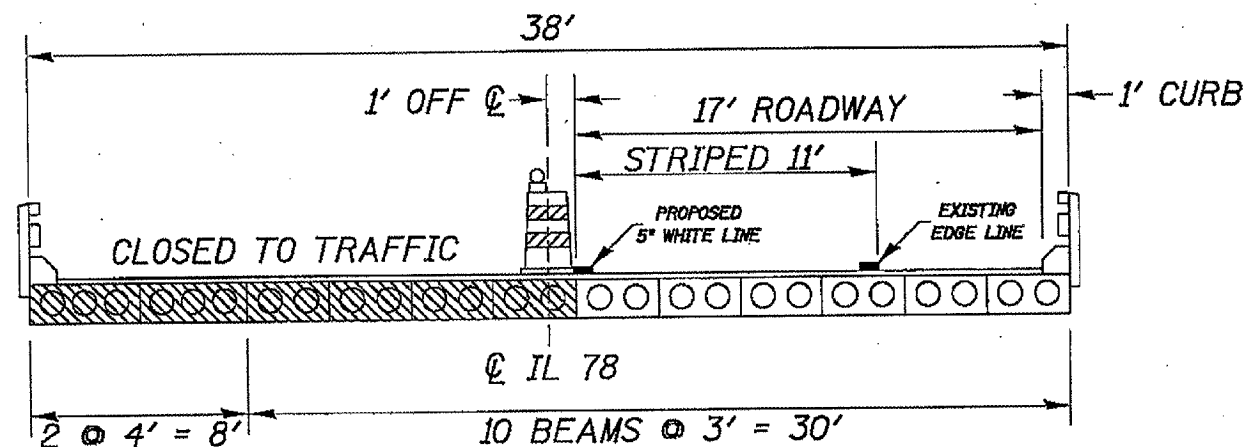
NOTES:

THE NORTH TRAFFIC SIGNAL SHALL BE PLACED AT THE END OF THE SPBGR ALREADY IN PLACE. ANY EARTHWORK NECESSARY TO FIT THE SIGNAL AND TRAFFIC BARRIER ON THE SHOULDER SHALL BE INCLUDED IN THE BID PRICE FOR PORTABLE TRAFFIC SIGNALS.

THE BRIDGE SHALL BE STRIPED IN SUCH A WAY AS TO PREVENT ANY TRAFFIC FROM DRIVING ON THE CENTER DECK BEAM AND ALL DECK BEAMS TO THE EAST OF CENTER.

STOP BARS AND BARRELS PICTURED ON THIS SHEET SHALL BE PAID FOR AS TRAFFIC CONTROL AND PROTECTION, STANDARD 701316 (SPECIAL)

ALL TRAFFIC CONTROL DEVICES PLACED UNDER THIS CONTRACT SHALL BE LEFT IN PLACE AT THE COMPLETION OF THIS PROJECT AND SHALL BECOME PROPERTY OF THE STATE OF ILLINOIS. ALL TRAFFIC CONTROL DEVICES SHALL BE NEW WHEN INSTALLED AND SHALL BE IN GOOD CONDITION AT THE COMPLETION OF THE PROJECT. ANY DEVICES THAT ARE DAMAGED DURING THE PROJECT OR ARE IN LESS THAN GOOD CONDITION SHALL BE REPLACED AT THE CONTRACTOR'S EXPENSE.



**BRIDGE CROSS SECTION
FACING SOUTH**

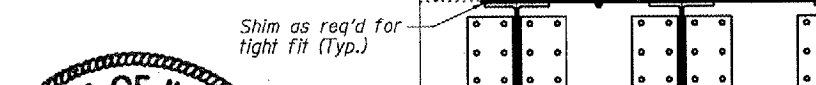
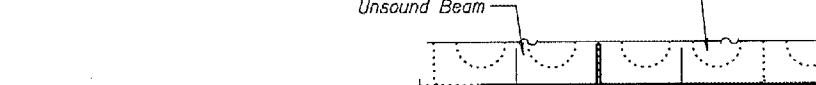
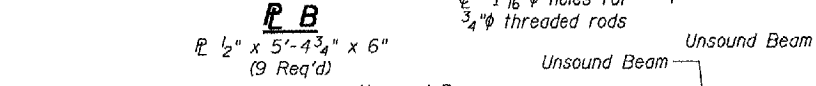
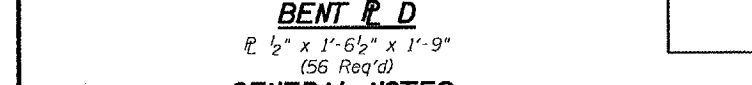
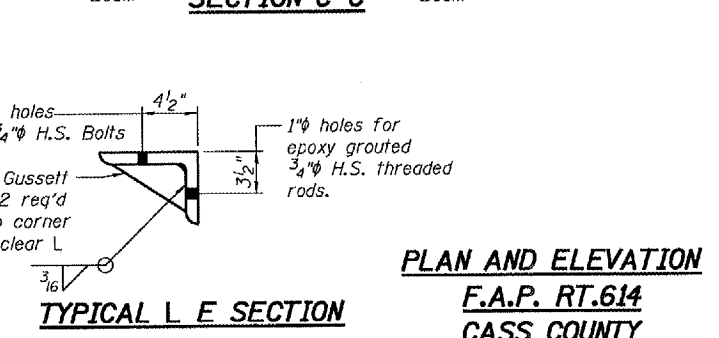
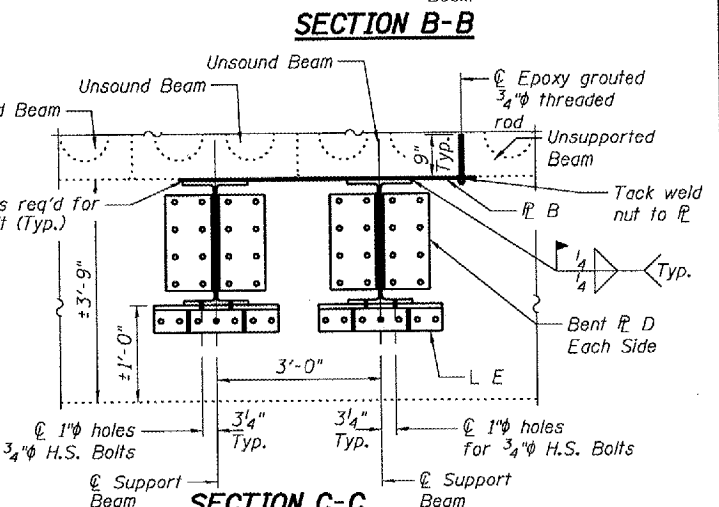
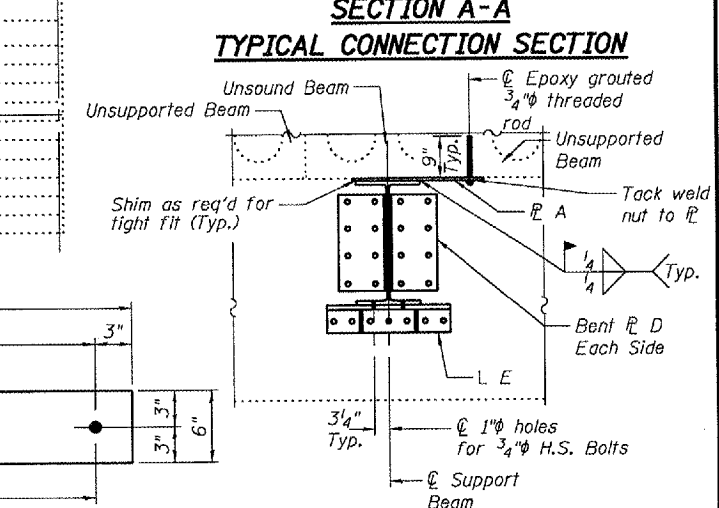
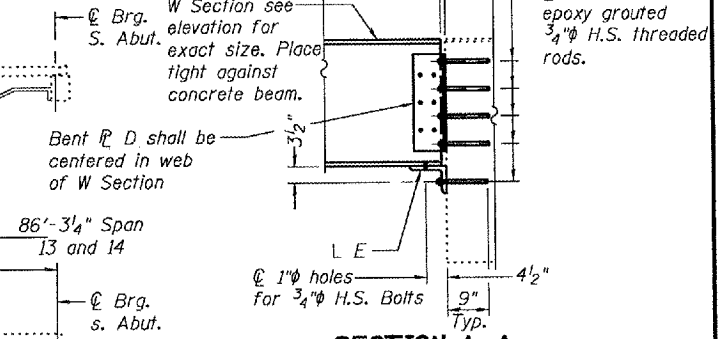
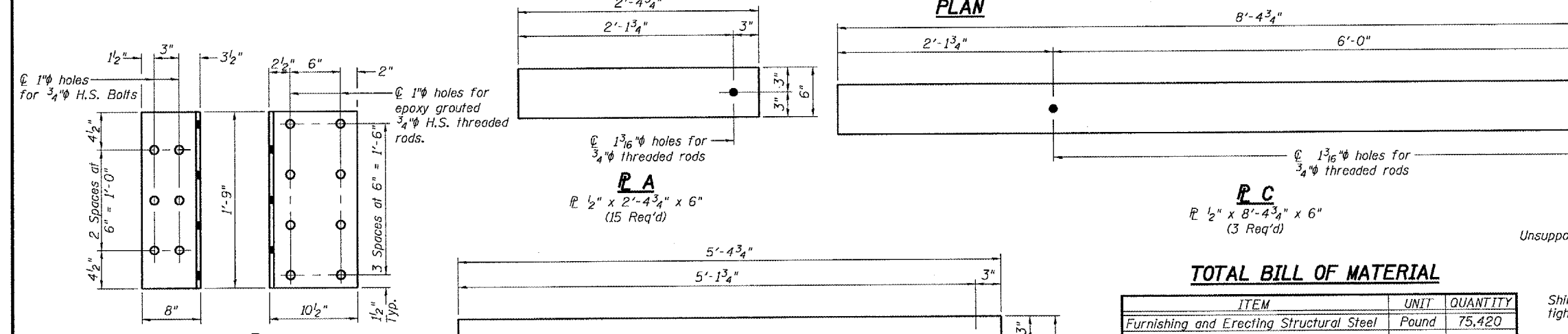
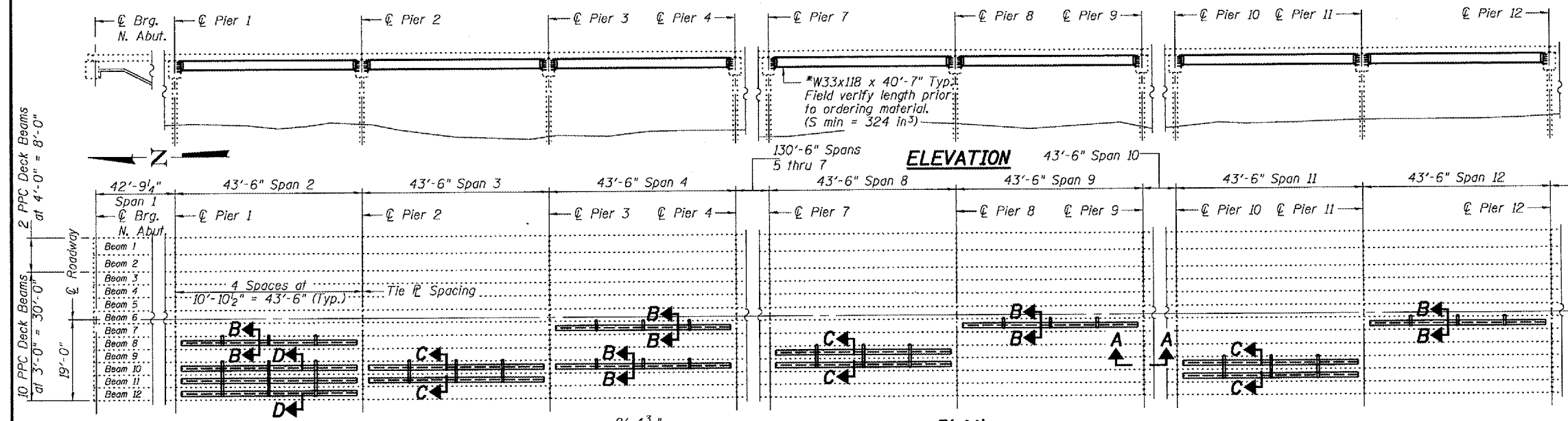
TRAFFIC CONTROL DETAIL
FAS 614 (IL 78)
SECTION (144BR)I-2
CASS COUNTY

STATE OF ILLINOIS
DEPARTMENT OF TRANSPORTATION

*Other sections meeting the section modulus requirements shown may be allowed subject to approval by the Bureau of Bridges and Structures.

ROUTE NO.	SECTION	COUNTY	TOTAL SHEETS	SHEET	SHEET NO. 1
		Cass	5	5	1 SHEETS
FED. ROAD DIST. NO. 7	ILLINOIS	FED. AID PROJECT-			

Contract Number: ---



TOTAL BILL OF MATERIAL

ITEM	UNIT	QUANTITY
Furnishing and Erecting Structural Steel	Pound	75,420

GENERAL NOTES

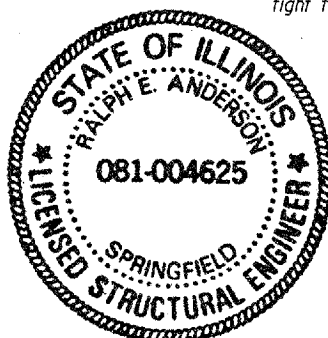
All structural steel shall conform to AASHTO Classification M-270 Gr. 36, unless otherwise noted.

Plan dimensions and details relative to existing plans are subject to routine variations. The Contractor shall field verify existing dimensions and details affecting new construction and make necessary approved adjustments prior to construction or ordering of materials. Such variations shall not be cause for additional compensation for a change in scope of the work, however, the Contractor will be paid for the quantity actually furnished based upon the unit price bid for the work.

See Section 584 of the Standard Specifications for Epoxy Grouting of Threaded Rods.

The cost of epoxy grouting threaded rods shall be included with Furnishing and Erecting Structural Steel.

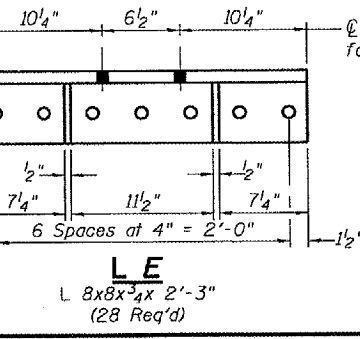
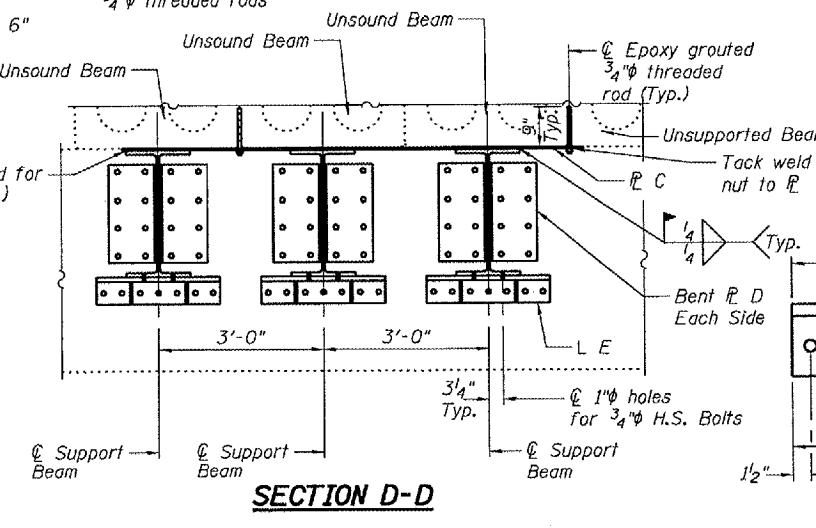
Traffic control barrels shall be placed along beam line 6, see Roadway Plans for details.



DESIGNED: Adrian J. Holloway
CHECKED: Victor H. Voliz
DRAWN: [Signature]
CHECKED: ATH VHV

EXAMINED: [Signature]
PASSED: Ralph E. Anderson
REPAIR PLANS UNIT CHIEF
ENGINEER OF BRIDGES AND STRUCTURES

January 12, 2007



PLAN AND ELEVATION
F.A.P. RT.614
CASS COUNTY
SN 009-0006