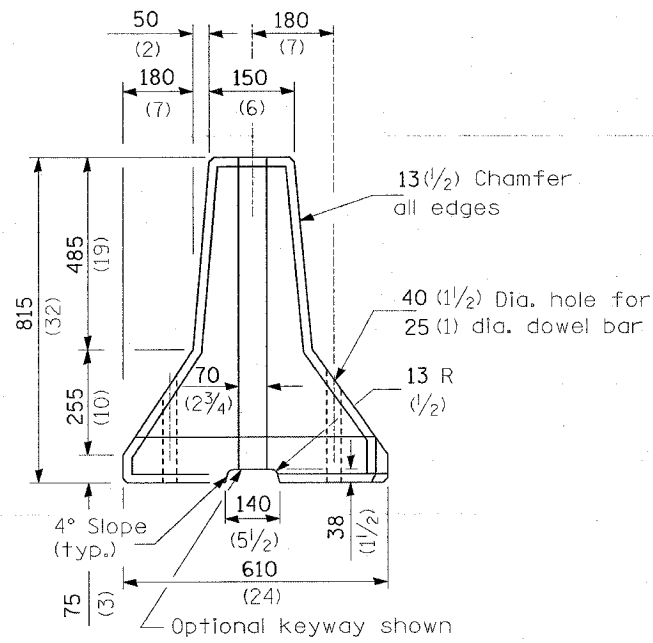
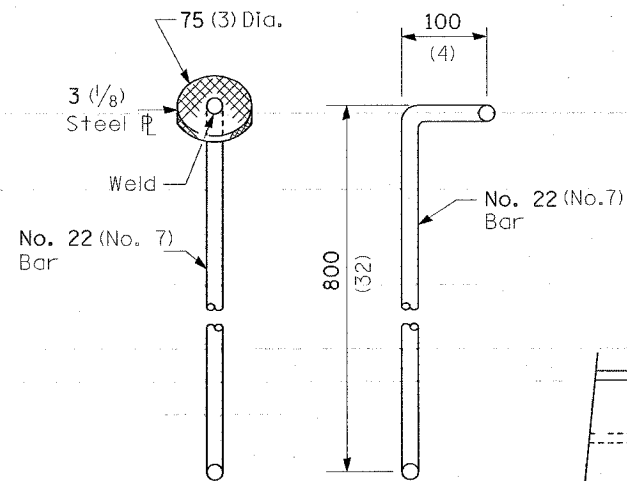


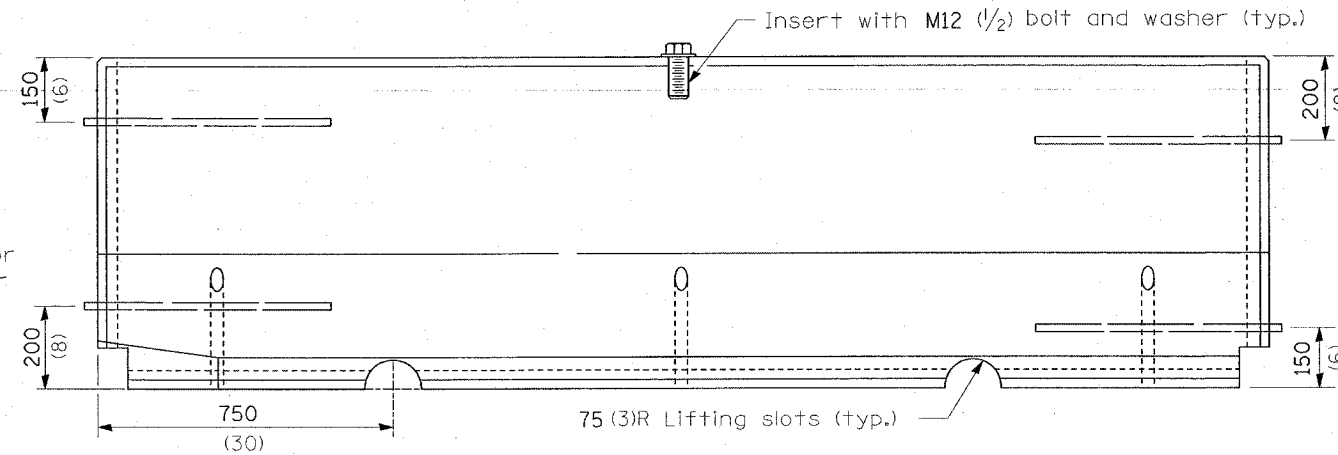
F.A.P. RTE.	SECTION	COUNTY	TOTAL SHEETS	SHEET NO.
789	54BR-1	MADISON	61	21
STA.		TO STA.		
FED. ROAD DIST. NO.		ILLINOIS FED. AID PROJECT		



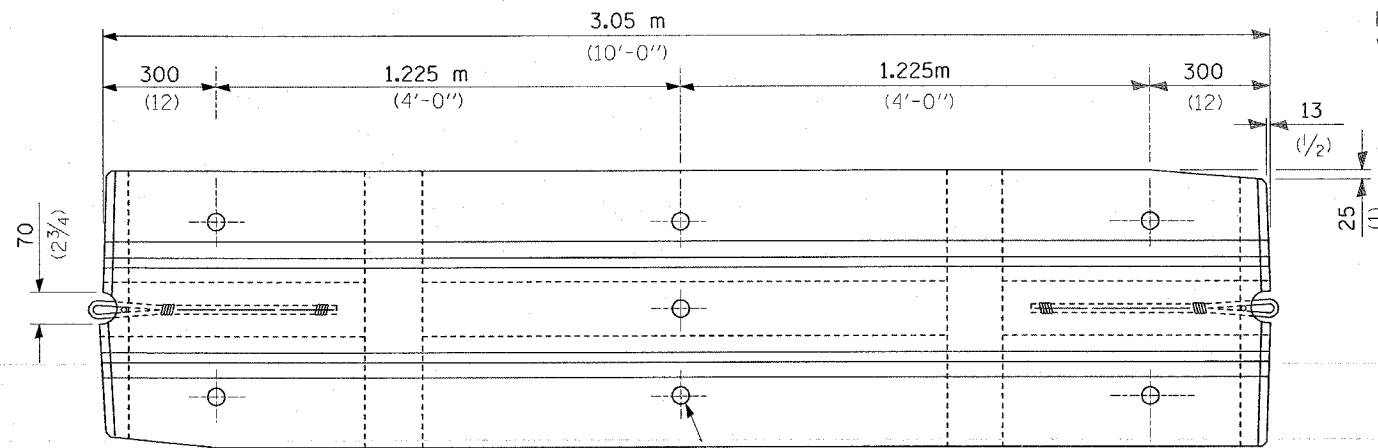
**END VIEW**  
(without wire rope loops)



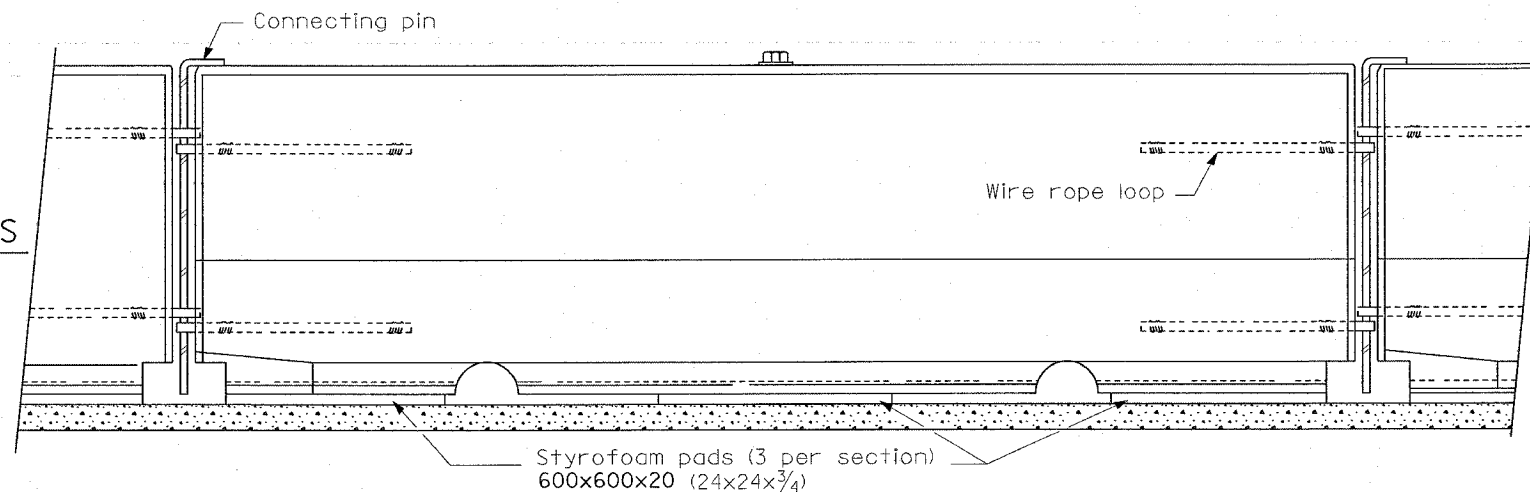
**ALTERNATE CONNECTING PINS**



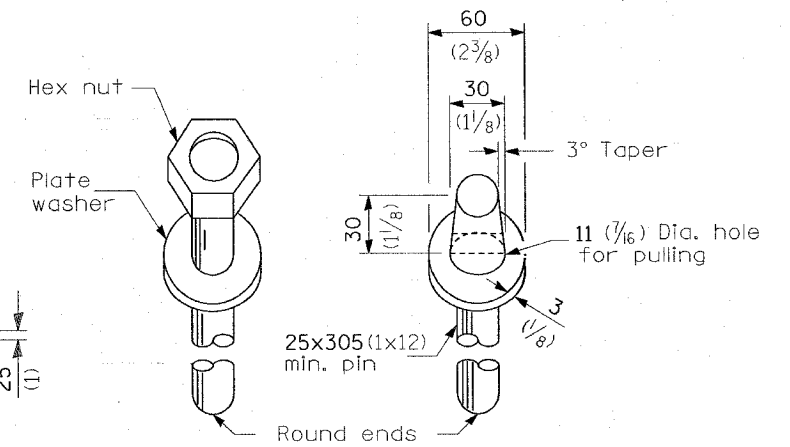
**ELEVATION**



**PLAN**



**TYPICAL INSTALLATION WITH STYROFOAM PADS**



**DOWEL BARS**

**NOTES:**  
New Jersey (NJ) shape barrier shall not be produced after October 1, 2002. However, New Jersey shape barrier produced prior to October 1, 2002 may be used until January 1, 2008.

The NJ shape barrier units shall be seated on styrofoam pads except when they are anchored.

NJ shape dowel bars shall be embedded at least 200 (8) into the pavement, and shall not project above the outer surface of the barrier. The connecting pin for the NJ shape pin and loop connection, may be either a plain 22 (7/8) diameter or a deformed No. 22 (No. 7) bar meeting the requirements of Article 1006.10(b) except Grade 40 (Grade 60) bars shall be used.

REVISIONS	
NAME	DATE

ILLINOIS DEPARTMENT OF TRANSPORTATION  
**TEMPORARY CONCRETE BARRIER**  
NJ SHAPE DESIGN  
FAS ROUTE 1842  
SECTION 106BR  
ST CLAIR COUNTY

SCALE: VERT. \_\_\_\_\_  
HORIZ. \_\_\_\_\_  
DATE \_\_\_\_\_ DRAWN BY \_\_\_\_\_  
CHECKED BY \_\_\_\_\_