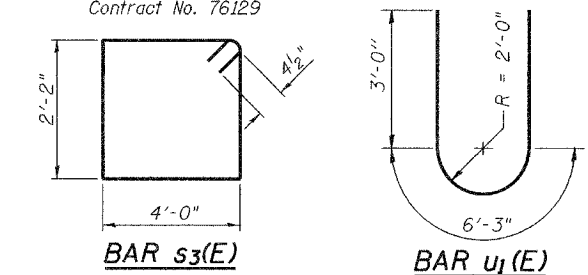
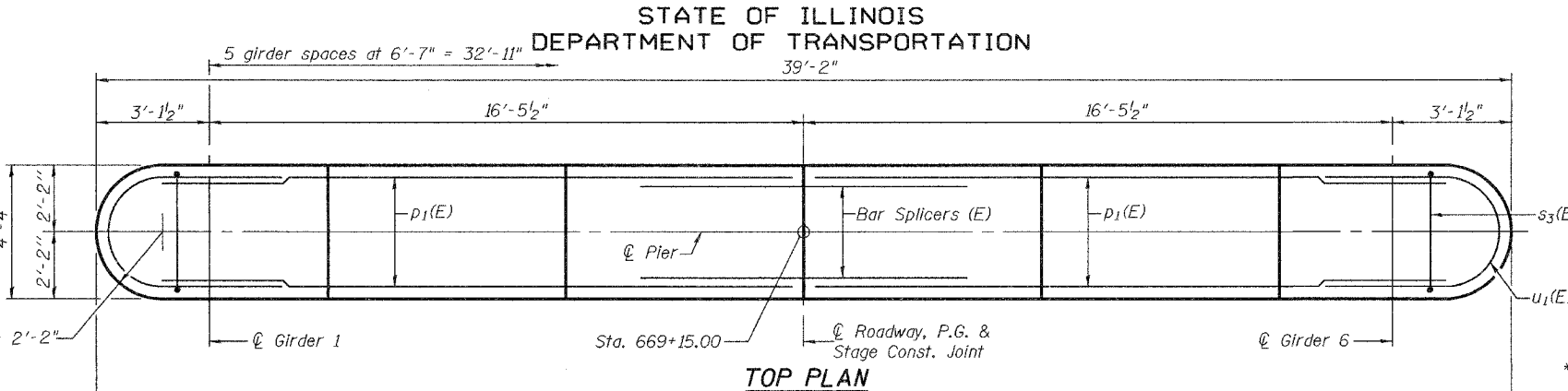
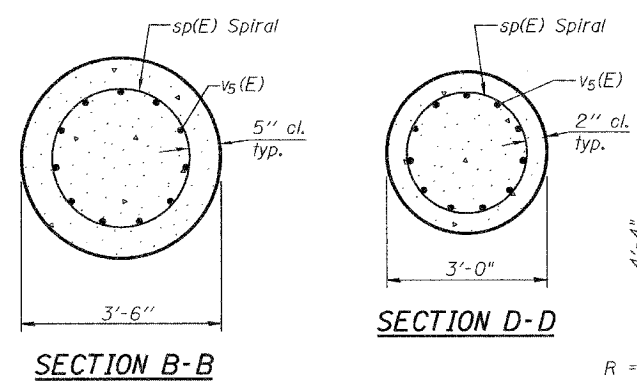


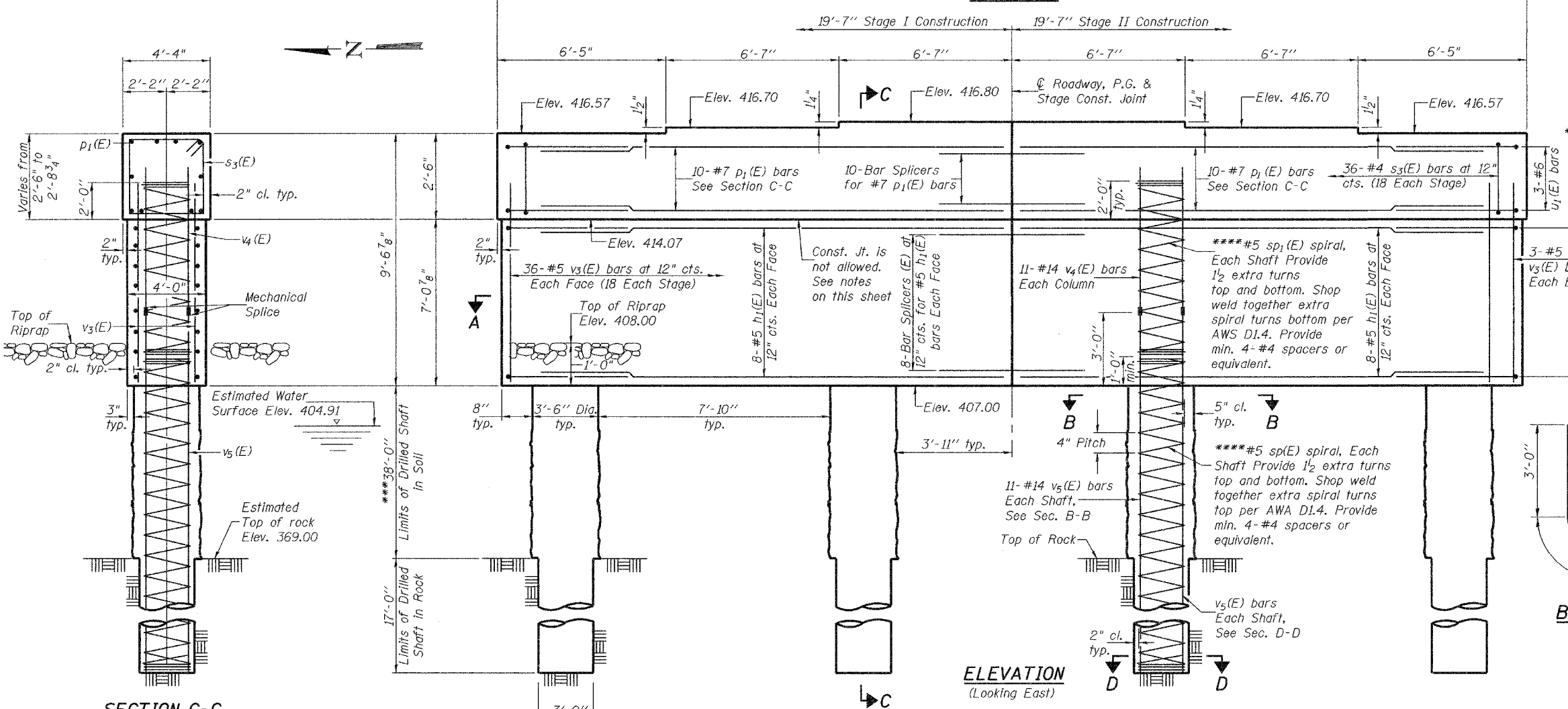
STATE OF ILLINOIS  
DEPARTMENT OF TRANSPORTATION

ROUTE NO.	SECTION	COUNTY	SHEETS	SHEET	SHEET NO.
F.A.S. 1842	106BR	ST. CLAIR	61	37	16
FED. ROAD DIST. NO. 7		BILLING		FED. AID PROJECT	

Contract No. 76129



\*\*\*If the prevailing water surface elevation during construction is consistently different than estimated on the plans, the contractor may propose an adjustment to the top of the drilled shaft elevation as part of their installation procedure. The top of all drilled shafts within a substructure unit shall be constructed to the same elevation and extend above the prevailing water surface. The quantities and reinforcement detailing are based on the top of shaft and the estimated elevations shown and may change based on the actual elevations encountered at each shaft and the final top of shaft elevation.  
 \*\*\*Allowable Substitution: Provide 1/2 extra turns top and bottom with 135° standard hook into core at ends of spiral.

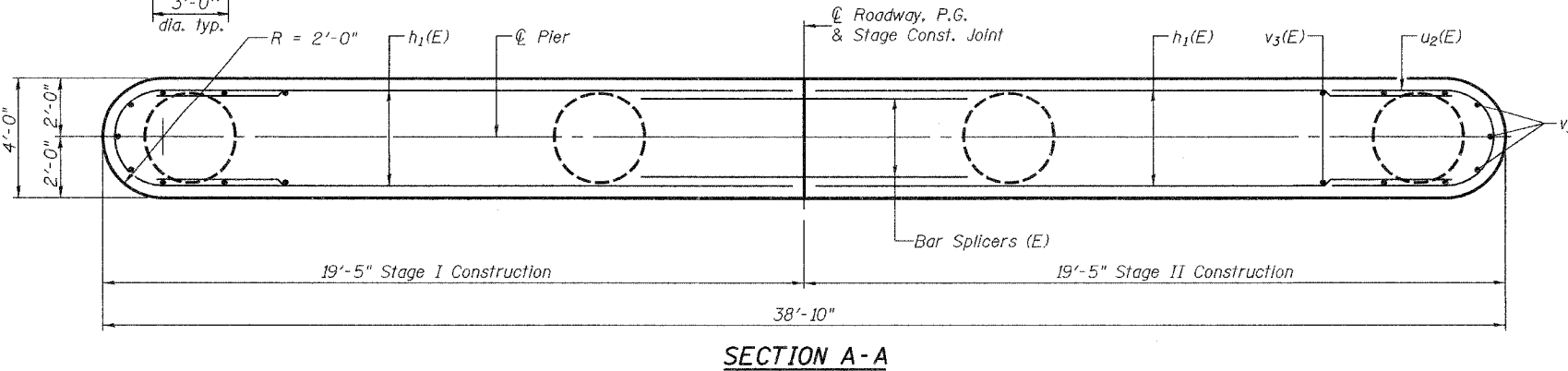


**BILL OF MATERIAL**

Bar No.	Size	Length	Shape
h <sub>1</sub> (E)	#5	17'-3"	
p <sub>1</sub> (E)	#7	17'-3"	
s <sub>3</sub> (E)	#4	13'-1"	
* sp(E)	#5	56'-0"	
* sp <sub>1</sub> (E)	#5	8'-1"	
u <sub>1</sub> (E)	#6	12'-3"	
u <sub>2</sub> (E)	#5	11'-9"	
v <sub>3</sub> (E)	#5	8'-11"	
v <sub>4</sub> (E)	#14	6'-4"	
v <sub>5</sub> (E)	#14	58'-0"	
Concrete Structures	Cu. Yd.	56.4	
Reinforcement Bars, Epoxy Coated	Pound	41420	
Underwater Structure Excavation Protection, Location 1	Each	1	
Drilled Shaft in Soil	Cu. Yd.	54.2	
Drilled Shaft in Rock	Cu. Yd.	17.8	
Structure Excavation	Cu. Yd.	12	
Mechanical Splice	Each	44	

Notes:  
 Top of rock is estimated and may vary along the length of the pier.  
 Pour cap monolithically with pier wall.

DESIGNED	AMJ	EXAMINED	Thomas J. Damschall
CHECKED	RLM	PASSED	Ralph E. Anderson
DRAWN	AMC AMBER SEIBER		
CHECKED	RLM		



**PIER 1**  
 F.A.S. ROUTE 1842 - SECTION 106BR  
 ST. CLAIR COUNTY  
 STATION 669+65.50  
 STRUCTURE NO. 082-0387