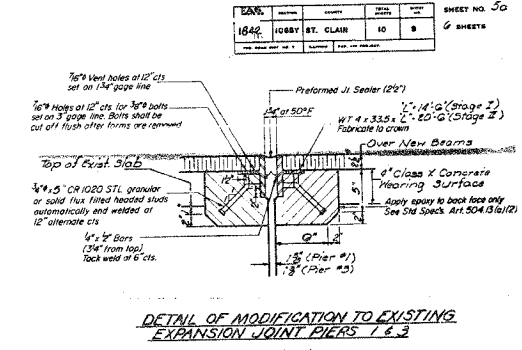
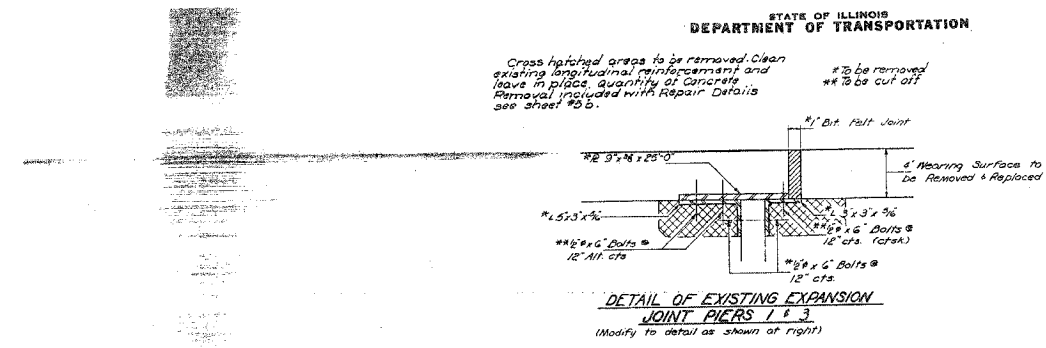


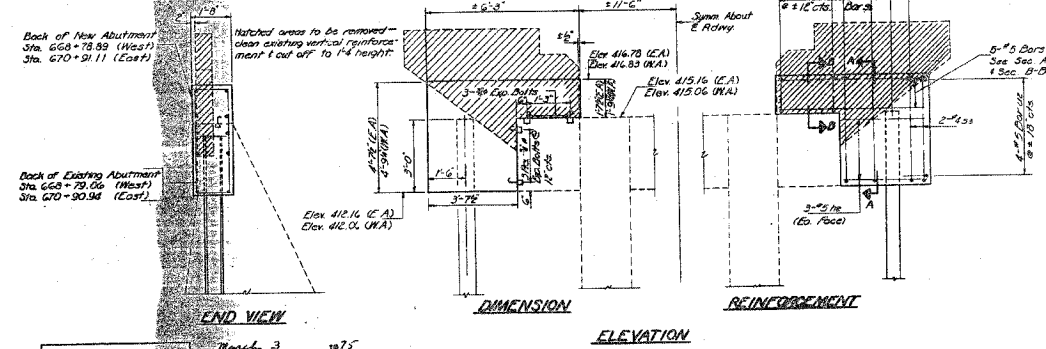
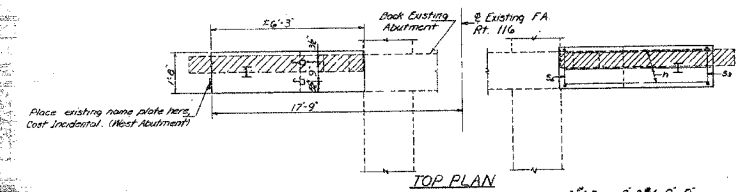
F.A.P. RTE.	SECTION	COUNTY	TOTAL SHEETS	SHEET NO.
1842	54BR-1	MADISON	61	50
STA.		TO STA.		
FED. ROAD DIST. NO.		ILLINOIS FED. AID PROJECT		

STATE OF ILLINOIS
DEPARTMENT OF TRANSPORTATION

Cross hatched areas to be removed. Clean existing longitudinal reinforcement and leave in place. Quantity of Concrete Removal included with Repair Details see sheet 49.5.

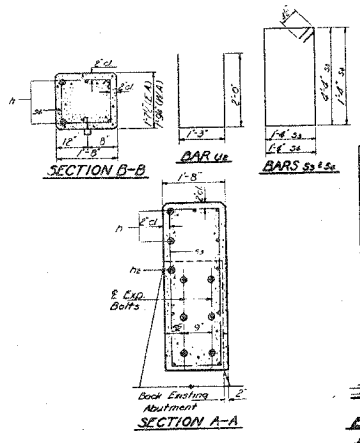


NOTE: Dimensions are at right angles. Hatched areas to be poured after beams have been erected and joints grouted. Form monolithically with concrete wearing surf. See Elev of Beams Detail for transverse reinforcement. Quantity of Class 3 Concrete below top of existing slab included with Repair Details sheet 49.5.



DESIGNED BY	REVISION	DATE
Checked by		
Approved by		

PILE DATA
Type - ϕ 18" x 33"
Capacity - 150 Tons
Est. Length - E. Abut. 28' W. Abut. 42'
No. Reqs - 4



THO ABUTMENTS
BILL OF MATERIAL

Bar No.	Size	Length	Spaced
h	20	75	5'-11"
h2	24	75	3'-3"
33	16	48	12'-1"
34	12	48	6'-7"
42	16	45	5'-3"
Class 3 Concrete			
Concrete Abutment	Cu. Yds.	106	0.3
Reinforcement Bars	Lbs.	477	
Steel Plates (1/2" x 24")	Lbs.	74	14.0
Expansion Bolts	Each	4	

EAST & WEST ABUTMENTS
PART 1842 SECTION 106BR
ST. CLAIR COUNTY
STA 663+04.64

REVISIONS	NAME	DATE

ILLINOIS DEPARTMENT OF TRANSPORTATION
EXISTING STRUCTURE PLANS
FAS ROUTE 1842
SECTION 106BR
ST CLAIR COUNTY
SCALE: VERT. HORIZ.
DATE: DRAWN BY CHECKED BY

FOR INFORMATION ONLY

PLOT DATE = 11/6/2006
FILE NAME = c:\p\projects\1842\1842\1842\1842\1842.dgn
PLOT SCALE = 1/8" = 1'-0"
REFERENCE = SHEET 49.5