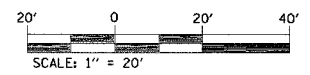


F.A.U. RTE.	SECTION	COUNTY	TOTAL SHEETS	SHEET NO.
9079	65BR	MADISON	46	10A
STA.		TO STA.		
FED. ROAD DIST. NO.		ILLINOIS FED. AID PROJECT		



PROP. CURVE NW-2
 PI STA. = 1+20.35
 $\Delta = 81^\circ 51' 04''$ (LT)
 $D = 163^\circ 42' 08''$
 $R = 35.00'$
 $T = 30.35'$
 $L = 50.00'$
 $E = 11.32'$
 $e = \text{---}$
 $T.R. = \text{---}$
 $S.E. RUN = \text{---}$
 $P.C. STA = 0+90.00$
 $P.T. STA = 1+40.00$

PROP. CURVE NW-1
 PI STA. = 0+52.50
 $\Delta = 65^\circ 28' 51''$ (RT)
 $D = 163^\circ 42' 08''$
 $R = 35.00'$
 $T = 22.50'$
 $L = 40.00'$
 $E = 6.61'$
 $e = \text{---}$
 $T.R. = \text{---}$
 $S.E. RUN = \text{---}$
 $P.C. STA = 0+30.00$
 $P.T. STA = 0+70.00$

PROP. CURVE NE-2
 PI STA. = 1+84.28
 $\Delta = 67^\circ 34' 29''$ (RT)
 $D = 163^\circ 42' 08''$
 $R = 35.00'$
 $T = 23.42'$
 $L = 41.28'$
 $E = 7.11'$
 $e = \text{---}$
 $T.R. = \text{---}$
 $S.E. RUN = \text{---}$
 $P.C. STA = 1+60.86$
 $P.T. STA = 2+02.14$

PROP. CURVE NE-1
 PI STA. = 0+64.89
 $\Delta = 90^\circ 02' 10''$ (LT)
 $D = 163^\circ 42' 08''$
 $R = 35.00'$
 $T = 35.02'$
 $L = 55.00'$
 $E = 14.51'$
 $e = \text{---}$
 $T.R. = \text{---}$
 $S.E. RUN = \text{---}$
 $P.C. STA = 0+29.86$
 $P.T. STA = 0+84.86$

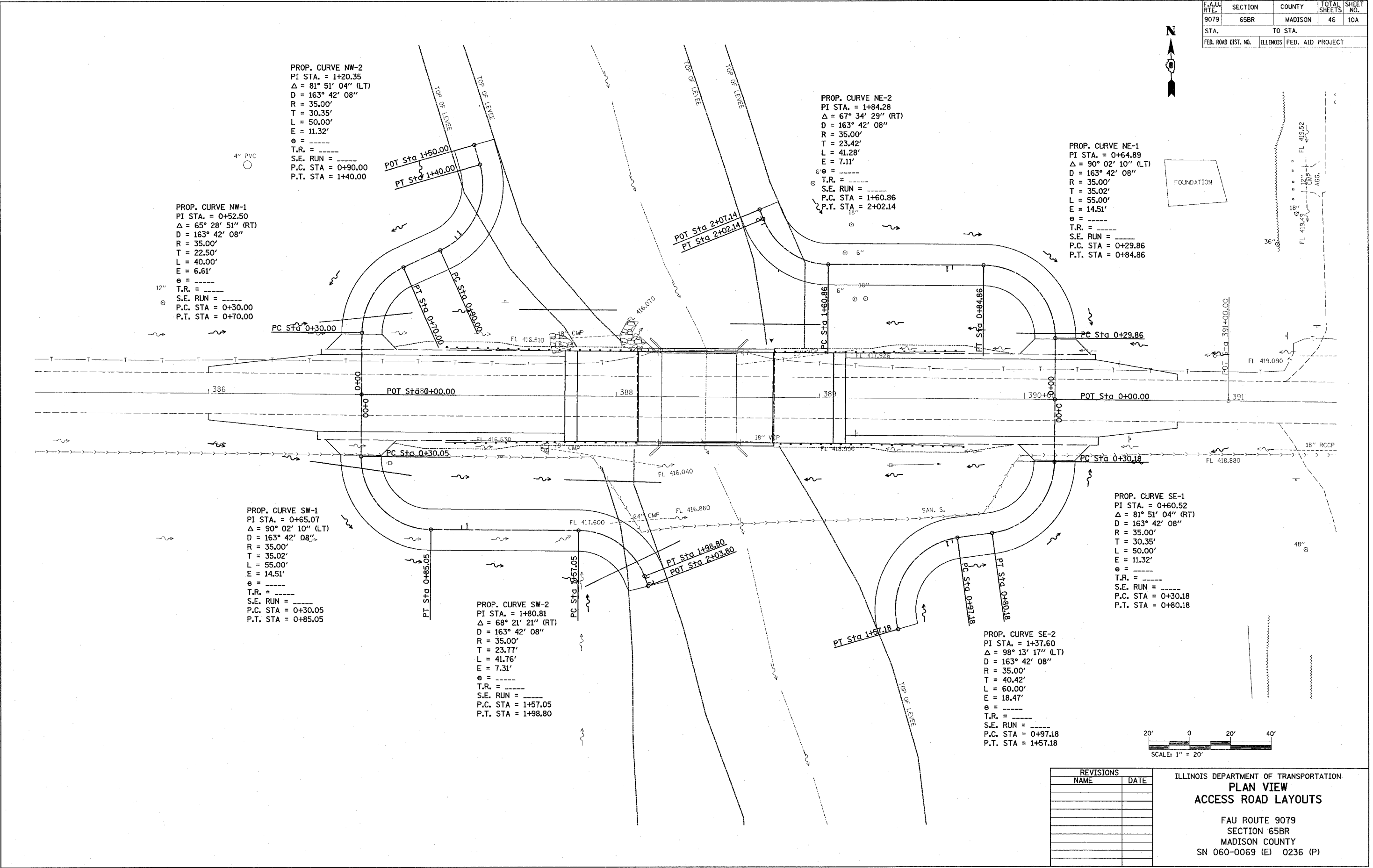
PROP. CURVE SW-1
 PI STA. = 0+65.07
 $\Delta = 90^\circ 02' 10''$ (LT)
 $D = 163^\circ 42' 08''$
 $R = 35.00'$
 $T = 35.02'$
 $L = 55.00'$
 $E = 14.51'$
 $e = \text{---}$
 $T.R. = \text{---}$
 $S.E. RUN = \text{---}$
 $P.C. STA = 0+30.05$
 $P.T. STA = 0+85.05$

PROP. CURVE SW-2
 PI STA. = 1+80.81
 $\Delta = 68^\circ 21' 21''$ (RT)
 $D = 163^\circ 42' 08''$
 $R = 35.00'$
 $T = 23.77'$
 $L = 41.76'$
 $E = 7.31'$
 $e = \text{---}$
 $T.R. = \text{---}$
 $S.E. RUN = \text{---}$
 $P.C. STA = 1+57.05$
 $P.T. STA = 1+98.80$

PROP. CURVE SE-1
 PI STA. = 0+60.52
 $\Delta = 81^\circ 51' 04''$ (RT)
 $D = 163^\circ 42' 08''$
 $R = 35.00'$
 $T = 30.35'$
 $L = 50.00'$
 $E = 11.32'$
 $e = \text{---}$
 $T.R. = \text{---}$
 $S.E. RUN = \text{---}$
 $P.C. STA = 0+30.18$
 $P.T. STA = 0+80.18$

PROP. CURVE SE-2
 PI STA. = 1+37.60
 $\Delta = 98^\circ 13' 17''$ (LT)
 $D = 163^\circ 42' 08''$
 $R = 35.00'$
 $T = 40.42'$
 $L = 60.00'$
 $E = 18.47'$
 $e = \text{---}$
 $T.R. = \text{---}$
 $S.E. RUN = \text{---}$
 $P.C. STA = 0+97.18$
 $P.T. STA = 1+57.18$

PLOT DATE = 10/19/2006
 FILE NAME = c:\pvc\pvc\106699\plan\106699a.dgn
 PLOT SCALE = 20.0000 / IN.
 REFERENCE = #REF#



REVISIONS	
NAME	DATE

ILLINOIS DEPARTMENT OF TRANSPORTATION
PLAN VIEW
ACCESS ROAD LAYOUTS
 FAU ROUTE 9079
 SECTION 65BR
 MADISON COUNTY
 SN 060-0069 (E) 0236 (P)