

F.A. RTE.	SECTION	COUNTY	TOTAL SHEET NO.	SHEET NO.
70	60-(10,11)RS	MADISON	156	2
STA. _____ TO STA. _____		FED. ROAD DIST. NO. _____ ILLINOIS FED. AID PROJECT _____		

GENERAL NOTES

- THE STANDARDS AND REVISION NUMBERS SHALL APPLY TO THIS PROJECT.
- ALL ELEVATIONS REFER TO NATIONAL GEODATIC SURVEY (N.G.S.) DATUM.
- IF ANY SECTION OR SUB-SECTION MONUMENTS ARE ENCOUNTERED, THE ENGINEER SHALL BE NOTIFIED BEFORE SUCH MONUMENTS ARE REMOVED OR RESURFACED OVER. THE CONTRACTOR SHALL PROTECT AND CAREFULLY PRESERVE ALL PROPERTY MARKERS AND MONUMENTS UNTIL THE OWNER, AN AUTHORIZED SURVEYOR, OR AGENT HAS WITNESSED OR OTHERWISE REFERENCED THEIR LOCATION.
- ILLINOIS STATE LAW REQUIRES A 48 HOUR NOTICE TO BE GIVEN TO UTILITIES BEFORE DIGGING. FIELD MARKING OF FACILITIES MAY BE OBTAINED BY CONTACTING J.U.L.I.E. OR FOR NON MEMBERS, THE UTILITY COMPANY DIRECTLY. AGENCIES KNOWN TO HAVE FACILITIES WITHIN THE PROJECT AREA ARE AS FOLLOWS:

UTILITY

- AMEREN IP
 - BOND MADISON WATER COMPANY
 - CHARTER COMMUNICATIONS, INC
 - CONOCOPHILIPS COMPANY
 - ILLINOIS AMERICAN WATER CO.
 - ATT ILLINOIS
 - SOUTHWESTERN ELECTRIC COOPERATIVE, INC
 - CITY OF TROY
 - WILTEL COMMUNICATIONS, LLC
- MEMBERS OF J.U.L.I.E. (800)892-0123 ARE INDICATED BY *.
NON MEMBERS MUST BE NOTIFIED INDIVIDUALLY.

UTILITY	ABOVE GROUND	BELOW GROUND
AMEREN IP		X
BOND MADISON WATER COMPANY		X
CHARTER COMMUNICATIONS, INC		X
CONOCOPHILIPS COMPANY		X
ILLINOIS AMERICAN WATER CO.		X
ATT ILLINOIS	X	X
SOUTHWESTERN ELECTRIC COOPERATIVE, INC		X
CITY OF TROY		X
WILTEL COMMUNICATIONS, LLC		X

- EXCESS BITUMEN REMOVAL SHALL BE PAID FOR ACCORDING TO ARTICLE 109.04 OF STANDARD SPECIFICATIONS.
- PROTECTIVE COAT SHALL BE APPLIED TO ALL GUTTER FLAGS, FACE OF CURB, AND MEDIAN SURFACE.
- THE MATERIAL TRANSFER DEVICE (MTD) MAY BE ALLOWED TO TRAVEL OVER STRUCTURES IF GIVEN APPROVAL FROM THE ENGINEER. THE MTD IS EMPLOYED OF BITUMINOUS MATERIAL PRIOR TO CROSSING THE STRUCTURE, AND THE TIRES OF THE MTD TRAVEL ON OR IN CLOSE PROXIMITY AND PARALLEL TO THE BEAM AND/OR GIRDER LINES OF THE STRUCTURE. THE RESIDENT ENGINEER SHOULD MARK THE DECK SURFACE FOR THE LOCATION OF THE BEAMS/GIRDERS. THE COST TO EMPTY THE MTD OF BITUMINOUS MATERIAL WILL BE AT THE EXPENSE OF THE CONTRACTOR. IF THE NBIS RATING OF A STRUCTURE IS LESS THAN OR EQUAL TO 4.0 THE DEPARTMENT WILL PAY TO HAVE THE MTD MOVED ACCORDING TO ARTICLE 109.04 OF THE STANDARD SPECIFICATIONS.
- THE CONTRACTOR SHALL BE AWARE THAT THERE ARE MANHOLES AND VALVES LOCATED WITHIN THE RESURFACING LIMITS. CARE SHALL BE TAKEN IN THESE LOCATIONS DURING MILLING OPERATIONS.

- THE THICKNESS OF THE HMA MIXTURE SHOWN ON THE PLANS IS THE NOMINAL THICKNESS. DEVIATIONS FROM THE NOMINAL THICKNESS WILL BE PERMITTED WHEN SUCH DEVIATIONS OCCUR DUE TO IRREGULARITIES IN THE IN THE EXISTING SURFACE OR BASE ON WHICH THE HMA MIXTURE IS PLACED.
- AN ESTIMATED 7000 TONS OF HMA WILL BE REMOVED.
- THE MIXTURE REQUIREMENTS SHOWN ON THIS SHEET IN THE MIXTURE REQUIREMENTS CHART ARE APPLICABLE FOR THIS PROJECT.
- EARTHWORK FOR THIS PROJECT CONSISTS OF 89 CUBIC YARDS OF EARTH EXCAVATION AND 151 CUBIC YARDS OF FURNISHED EXCAVATION.
- IF ANY UNSUITABLE MATERIAL IS ENCOUNTERED DURING CONSTRUCTION IT WILL BE NECESSARY TO REMOVE THE UNSUITABLE MATERIAL AND REPLACE IT WITH A SUITABLE MATERIAL AS APPROVED BY THE ENGINEER.
- ALL AREAS DISTURBED FOR ANY REASON SHALL BE SEEDED AND MULCHED AS DIRECTED BY THE ENGINEER. NUTRIENTS SHALL CONFORM TO ARTICLE 250.04 OF THE STANDARD SPECIFICATIONS.
- EXISTING TREES THAT ARE NOT SHOWN TO BE REMOVED IN THE PLANS SHALL REMAIN UNDAAGED.
- SAW CUTTING ON ALL EDGES FOR REMOVAL ITEMS SHALL BE INCLUDED IN THE COST OF THE REMOVAL ITEM AS INDICATED AND IN ACCORDANCE WITH SECTION 440 OF THE STANDARD SPECIFICATIONS.
- THE CONTRACTOR AND THE ENGINEER SHALL BE AWARE THAT NO SURVEY WAS PERFORMED FOR THIS PROJECT. THE STATIONING AND TOPO SHOWN IN THE PLANS WAS CREATED USING MICROFILM AND FIELD MEASUREMENTS MADE BY DESIGN PERSONNEL. BOTH SHALL BE CONSIDERED APPROXIMATE.
- THE CONTRACTOR SHALL VERIFY ALL DIMENSIONS AND CONDITIONS IN THE FIELD PRIOR TO CONSTRUCTION AND ORDERING OF MATERIALS.
- "ROAD CONSTRUCTION AHEAD" SIGNS SHALL BE PLACED AT THE BEGINNING OF THE PROJECT PLUS ALL INTERSECTING SIDE ROADS AND RAMPS AND WILL BE INCLUDED IN THE TRAFFIC CONTROL PAY ITEMS. ALL CONSTRUCTION SIGNS SHALL BE 48" FLOURESCENT ORANGE.
- FLAGMEN SHALL BE PRESENT DURING ALL CLOSURE HOURS INCLUDING LUNCH HOUR AND NO ADDITIONAL COMPENSATION SHALL BE ALLOWED.
- SHORT-TERM PAVEMENT MARKING SHALL BE APPLIED TO THE MILLED, PRIMED, AND FINAL HMA SURFACE. A QUANTITY FOR TEMPORARY PAVEMENT MARKING EQUAL TO THE AMOUNT OF PERMANENT PAVEMENT MARKING HAD BEEN INCLUDED IN THE PLANS. "WORK ZONE PAVEMENT MARKING REMOVAL" SHALL BE PAID FOR THE FINAL SURFACE ONLY.
- ALL TEMPORARY PAVEMENT MARKINGS SHALL BE PLACED IN SUCH A WAY AS NOT TO INTERFERE WITH THE PLACEMENT OF PERMANENT PAVEMENT MARKINGS.

- SIGN PANELS REMOVED FROM THE SIGN STRUCTURES TO BE REMOVED SHOULD BE TAKEN TO THE SIGN SHOP AT THE TMC BUILDING. CONTACT JEAN SLAPE AT 346-3289 TO ARRANGE THEIR DROP OFF.
- THE STAGE CONSTRUCTION TRAFFIC CONTROL SEQUENCE AS SHOWN IN THE PLANS IS SUGGESTED. THE CONTRACTOR MAY SUBMIT IN WRITING A PROPOSED STAGE CONSTRUCTION TRAFFIC CONTROL SEQUENCE MEETING THE TRAFFIC CONTROL STANDARDS, PLAN NOTES, AND SPECIAL PROVISIONS IN THIS CONTRACT FOR APPROVAL BY THE DEPARTMENT.
- THE CONTRACTOR SHALL BE REQUIRED TO CLEAN POT HOLE AREAS AND PLACE LEVEL BINDER (HAND METHOD) PRIOR TO CONCRETE PATCHING AND ALL HMA RESURFACING OPERATIONS AS DIRECTED BY THE ENGINEER. THIS WORK SHALL BE PAID FOR AS LEVEL BINDER (HAND METHOD) AND NO ADDITIONAL COMPENSATION WILL BE ALLOWED. TRAFFIC CONTROL 701426 OR OTHER APPROVED TRAFFIC CONTROL SHALL BE USED.
- THE TOPO, PLAN DETAILS AND NOTES ON THE PLAN SHEETS APPLY ONLY TO THE ROADWAYS INDICATED IN THE TITLE BLOCK.
- ADVANCE WARNING SIGNS SHALL BE PLACED ON SOUTHBOUND I-55, WESTBOUND I-70, NORTHBOUND I-55/70, AND WESTBOUND I-270 ACCORDING TO STANDARD 701400 AND AS DIRECTED BY THE RESIDENT ENGINEER TO NOTIFY MOTORISTS OF LANE CLOSURES ON I-55, I-70 AND I-270. NO ADDITIONAL COMPENSATION SHALL BE ALLOWED.
- ANY REFERENCE TO BITUMINOUS CONCRETE SHALL BE CONSTRUED TO MEAN HMA.
- THE HMA REMOVAL OPERATION AT RAMP G7 IS SHALL EXPOSE THE CONCRETE SURFACE. THIS WORK IS PAID FOR AS HOT-MIX ASPHALT SURFACE REMOVAL, 2 3/4" AND NO ADDITIONAL COMPENSATION WILL BE ALLOWED.
- TEMPORARY RUMBLE STRIPS SHOWN IN STANDARD 701316 ARE INCLUDED IN THE COST OF THE STANDARD.
- THE PCC PATCHES WITHIN THE PROJECT LIMITS WILL BE SUBJECT TO THE HMA SURFACE REMOVAL OPERATIONS OF THE DEPTHS SPECIFIED IN THE PLANS. THE COST OF MILLING THESE PATCHES SHALL BE INCLUDED IN THE CONTRACT UNIT PRICE OF THE HMA REMOVAL ITEMS IN THE CONTRACT AND NO ADDITIONAL COMPENSATION WILL BE ALLOWED.
- THE PORTABLE CHANGEABLE MESSAGE SIGNS SHALL BE PLACED AS DIRECTED BY THE ENGINEER. NO ADDITIONAL COMPENSATION SHALL BE ALLOWED FOR RELOCATION OF THESE SIGNS.
- THE SLOPEWALL TO BE RUBBILIZED AT STRUCTURES 060-0023 & 0024 SHALL BE GRADED BELOW THE PROPOSED RIPRAP SUBGRADE AND RUBBILIZED MATERIAL IN EXCESS OF THAT REQUIRED TO MEET THE PROPOSED RIPRAP SUBGRADE SHALL BE DISPOSED OF ACCORDING TO ARTICLE 202 AND NO ADDITIONAL COMPENSATION WILL BE ALLOWED.

INDEX OF SHEETS

1	COVER SHEET
2	INDEX OF SHEETS, GENERAL NOTES, HIGHWAY STANDARDS AND COMMITMENTS
3-6	SUMMARY OF QUANTITIES
7-10	TYPICAL SECTIONS
11-15	SCHEDULES
16	LOCATION MAP
17-22	EB 70 PLAN SHEETS
23-28	WB 70 PLAN SHEETS
29-33	EB & WB 70 PLAN SHEETS
34-35	EB & WB 270 PLAN SHEETS
36-37	RAMP G1 PLAN SHEETS
38	RAMP G3 PLAN SHEET
39-40	RAMP G4 PLAN SHEETS
41-43	RAMP G5 PLAN SHEETS
44	RAMP G6 PLAN SHEET
45	RAMP G7 PLAN SHEET
46-51	DETOUR PLANS
52-61	TRAFFIC CONTROL SHEETS
62-68	EB 70 PAVEMENT MARKING SHEETS
69-73	WB 70 PAVEMENT MARKING SHEETS
74-78	EB & WB 70 PAVEMENT MARKING SHEETS
79-80	EB & WB 270 PAVEMENT MARKING SHEETS
81-82	RAMP G1 PAVEMENT MARKING
83	RAMP G3 PAVEMENT MARKING SHEETS
84-86	RAMP G4 PAVEMENT MARKING SHEETS
87-89	RAMP G5 PAVEMENT MARKING SHEETS
90	RAMP G6 PAVEMENT MARKING SHEETS
91	RAMP G7 PAVEMENT MARKING DETAILS
92	STRUCTURE #060-0057 PLAN SHEET
93	STRUCTURE #060-0058 PLAN SHEET
94	STRUCTURE #060-0059 PLAN SHEET
95	STRUCTURE #060-0059 TRAFFIC CONTROL
96	STRUCTURE #060-0022 PLAN SHEET
97	STRUCTURE #060-0022 TRAFFIC CONTROL
*98-106	STRUCTURE #060-0023 PLAN SHEETS
107	STRUCTURE #060-0023 TRAFFIC CONTROL
*108-116	STRUCTURE #060-0024 PLAN SHEETS
117	STRUCTURE #060-0024 TRAFFIC CONTROL
118-121	STRUCTURE #060-0173 PLAN SHEETS
122	STRUCTURE #060-0173 TRAFFIC CONTROL
123-126	STRUCTURE #060-0182 PLAN SHEETS
127	STRUCTURE #060-0182 TRAFFIC CONTROL
128-137	OVERHEAD SIGN STRUCTURE PLANS
138-146	CANTILEVER SIGN STRUCTURE PLANS
147	SIGN STRUCTURE BORING LOGS
148	SIGN PANEL DETAILS
149-154	GUARDRAIL DETAILS
155	BUTT JOINT DETAILS
156	RESURFACING DETAILS

156A, - 156B, REMOVE & REELECT STEEL PLATE BEAM/GUARD RAIL DETAILS
 *105 DELETED
 *115 DELETED
 156E, F, TRAFFIC BARRIER TYPE 2 DETAILS

MIXTURE REQUIREMENTS - SUPERPAVE PROJECT

ROUTE	FAI 70
SECTION	60-(10,11)RS
COUNTY	MADISON
CONTRACT	76857

DESCRIPTION:	RESURFACING AND BRIDGE REHABILITATION ON I-70 FROM I-55 TO 2.5 MILES EAST OF THE 31 INTERCHANGE
--------------	---

ADT (Construction Yr)	30400
MLL	30.9
SLM	4.9
20 YR. ESAL'S	57.24

MIXTURE USE	SURFACE	X OVER SURFACE	PATCHING	BINDER
AC/PG	SBS PG 76-22	PG 64-22	PG 64-22	SBS 70-22
RAP % (MAX)	0%	0%	0%	0%
DESIGN AIR VOIDS	4.0% @ Ndes=80	4.0% @ Ndes=105	4.0% @ Ndes=105	4.0% @ Ndes=105
MIX COMPOSITION (GRADATION MIXTURE)			IL 19.0	IL 19.0
FRICITION AGG	MIXTURE SMA	MIXTURE C	MIXTURE B	MIXTURE B

MIXTURE USE	SHOULDERS	TOP LIFT SHOULDERS	LOCAL SURF	LOCAL BINDER
AC/PG	PG 58-22	PG 58-22	PG 64-22	PG 64-22
RAP % (MAX)	30%	30%	10%	15%
DESIGN AIR VOIDS	2.0% @ Ndes=30	**2.0% @ Ndes=30	4.0% @ Ndes=70	4.0% @ Ndes=70
MIX COMPOSITION (GRADATION MIXTURE)			IL 12.5 or 9.5	IL 19.0
FRICITION AGG	BAM	BAM	Mixture C	Mixture B

** Top Lift Shoulders - Design this mix at 2.0% voids and add asphalt to reduce voids to 1.5%.

Plan quantities for Hot Mix Asphalt Surface Course Items are calculated using a unit weight of 112 lb/sq yd/in (59.8 kg/sq m/25 mm thickness).

COMMITMENTS

PRIOR TO COMMENCEMENT OF ANY WORK INVOLVING IN-STREAM ACTIVITY, THE RESIDENT ENGINEER SHALL VERIFY WITH THE DISTRICT HYDRAULICS ENGINEER, FRANK OFFER, THAT THE NATIONALWIDE 404 PERMIT HAS BEEN ISSUED AND IS IN EFFECT FOR THIS PROJECT.

HIGHWAY STANDARDS

000001-04	701301-02
001001-01	701306-01
001006	701316-03
442001-03	701321-08
442101-06	701400-02
630001-07	701402-05
631032-03	701406-04
635001	701411-03
635006-02	701426-02
635011-01	702001-06
642001	720011
701101-1	780001-01
701201-02	781001-02

REVISIONS		ILLINOIS DEPARTMENT OF TRANSPORTATION GENERAL NOTES AND INDEX OF SHEETS FAI ROUTE 70 SECTION 60-(10,11)RS MADISON COUNTY
NAME	DATE	
		SCALE: VERT. _____ HORIZ. _____ DATE _____ DRAWN BY _____ CHECKED BY _____

Rev. 2-20-07

Rev.

F.A.I. RTE.	SECTION	COUNTY	TOTAL SHEETS	SHEET NO.
70	60-110.1185	MADISON	156	3
STA.		TO STA.		
FED. ROAD DIST. NO.		ILLINOIS FED. AID PROJECT		

SUMMARY OF QUANTITIES

SUMMARY OF QUANTITIES			URBAN TOTAL QUANTITIES	1000-2A 90% FED, 10% STATE ROADWAY	SFTY-2A 90% FED 10% STATE SN 060-0022	SFTY-2A 90% FED 10% STATE SN 060-0059	SFTY-2A 90% FED 10% STATE SN 060-0173	SFTY-2A 90% FED 10% STATE SN 060-0023	SFTY-2A 90% FED 10% STATE SN 060-0024	SFTY-2A 90% FED 10% STATE SN 060-0182	SFTY-2A 90% FED 10% STATE SN 060-0057	SFTY-2A 90% FED 10% STATE SN 060-0058	Y002-1C 100% STATE SIGNING	Y002-1C 90% FED 10% STATE SIGNING
CODE NO	ITEM	UNIT												
* 78100105	RAISED REFLECTIVE PAVEMENT MARKER (BRIDGE)	EACH	26		11	7			4	4				
* 78200410	GUARDRAIL MARKERS, TYPE A	EACH	156	124					16	16				
* 78200520	BARRIER WALL MARKERS, TYPE B	EACH	10						4	6				
* 78200530	BARRIER WALL MARKERS, TYPE C	EACH	10						4	6				
* 78201000	TERMINAL MARKER - DIRECT APPLIED	EACH	37	37										
78300100	PAVEMENT MARKING REMOVAL	SQ FT	742		307	200			113	122				
78300200	RAISED REFLECTIVE PAVEMENT MARKER REMOVAL	EACH	1227	1227										
80300100	LOCATING UNDERGROUND CABLE	FOOT	3000	3000										
X0320532	CONCRETE BRIDGE DECK SCARIFICATION (3/8 INCH)	SQ YD	1246					654				592		
X0321468	PLUG EXISTING DECK DRAINS	EACH	94					20	28	32		14		
X0322729	MATERIAL TRANSFER DEVICE	TON	24,399	24,399										
X0322932	SILICONE JOINT SEALER, 1.5"	FOOT	62					62						
X0322944	BRIDGE DECK THIN POLYMER OVERLAY 3/8"	SQ YD	1246					654				592		
X0324952	DETOUR SIGNING	L SUM	1	1										
X4066580	POLYMERIZED HOT-MIX ASPHALT SURFACE COURSE, STONE MATRIX ASPHALT, N80	TON	12,065	12,065										
X6330103	REMOVE AND RE-ERECT TRAFFIC BARRIER TERMINAL, TYPE 1 SPECIAL, TANGENT	EACH	4	4										
X7800400	PREFORMED PLASTIC PAVEMENT MARKING, TYPE B - LINE 4", SPECIAL	FOOT	7935	7935										
XZ193500	BRIDGE DECK MICROSILICA CONCRETE OVERLAY 2 1/4"	SQ YD	1298						614	684				
Z0006204	BRIDGE DECK HYDRO-SCARIFICATION 1/2"	SQ YD	1298						614	684				
Z0016002	DECK SLAB REPAIR (FULL DEPTH, TYPE II)	SQ YD	32					3	8	9			12	
Z0016200	DECK SLAB REPAIR (PARTIAL)	SQ YD	135					13					122	
Z0017100	DOWEL BARS	EACH	1070	1070										
Z0029999	IMPACT ATTENUATOR REMOVAL	EACH	2	2										
■ Z0030030	IMPACT ATTENUATORS (FULLY REDIRECTIVE, NARROW), TEST LEVEL 3	EACH	4	4										
■ Z0030150	IMPACT ATTENUATORS (NON-REDIRECTIVE), TEST LEVEL 3	EACH	2	2										
■ Z0030250	IMPACT ATTENUATORS, TEMPORARY (NON-REDIRECTIVE), TEST LEVEL 3	EACH	2						1	1				
■ Z0030350	IMPACT ATTENUATORS, RELOCATE (NON-REDIRECTIVE), TEST LEVEL 3	EACH	2						1	1				
Z0075300	TIE BARS	EACH	113	113										
* Z0077800	WOOD POST	EACH	4	4										
⊙ Z0076000	TRAINEES	HOUR	3000	3000										

PLT DATE = 12/14/2006
 FILE NAME = e:\d0705\plan\p1\00785.dgn
 PLOT SCALE = 40.0000 / IN.
 REFERENCE = *REF*

■ SFTY-3M *SPECIALTY ITEMS ⊙ Y080

F.A.I. RTE.	SECTION	COUNTY	TOTAL SHEETS	SHEET NO.
70	60-(10,11)RS	MADISON	156	15
STA. _____ TO STA. _____		FED. ROAD DIST. NO. _____ ILLINOIS FED. AID PROJECT		

GUARDRAIL SCHEDULE

LOCATION	STEEL PLATE BEAM GUARDRAIL, TYPE A	STEEL PLATE BEAM GUARDRAIL, TYPE B	STEEL PLATE BEAM GUARDRAIL, TYPE D	TRAFFIC BARRIER TERMINAL TYPE 2	TRAFFIC BARRIER TERMINAL TYPE 6	TRAFFIC BARRIER TERMINAL TYPE 6A	TRAFFIC BARRIER TERMINAL TYPE 1, SPECIAL, TANGENT	TRAFFIC BARRIER TERMINAL TYPE 1, SPECIAL, FLARED	GUARDRAIL REMOVAL	REMOVE & RE-ERECT STEEL PLATE BEAM GUARDRAIL, TYPE A	REMOVE & RE-ERECT STEEL PLATE BEAM GUARDRAIL, TYPE B	GUARDRAIL MARKERS, TYPE A	GUARDRAIL TERMINAL MARKER, DIRECT APPLIED	REMOVE & RE-ERECT TRAFFIC BARRIER TERMINAL TYPE 1, SPECIAL, TANGENT	IMPACT ATTENUATOR REMOVAL	IMPACT ATTENUATOR (FULLY REDIRECTIVE, NARROW), TEST LEVEL 3	IMPACT ATTENUATOR (NON-REDIRECTIVE), TEST LEVEL 3	IMPACT ATTENUATOR TEMPORARY (NON-REDIRECTIVE), TEST LEVEL 3	IMPACT ATTENUATOR RELOCATE (NON-REDIRECTIVE), TEST LEVEL 3	COMMENTS
	FEET	FEET	FEET	EACH	EACH	EACH	EACH	EACH	FEET	FEET	FEET	EACH	EACH	EACH	EACH	EACH	EACH	EACH	EACH	
EASTBOUND 1-70																				
859+88 TO 905+38	RT		37.5	1					12.5	400	50	4	1							SIGN TRUSS
956+33 TO 959+25	RT	75								287.5		4								RIGGIN RD
958+50 TO 959+25	LT	50	37.5	1			1		112.5			4	2		1					RIGGIN RD
991+95 TO 996+00	RT				1		1		62.5	312.5		4	2							WENDELL BR
994+75 TO 996+00	LT	387.5			1		1		150			4	2							WENDELL BR
997+50 TO 999+75	LT	175			1		1					4	2							WENDELL BR
1010+33 TO 1013+30	RT	62.5								212.5		4	2						1	STAUNTON RD
1012+10 TO 1013+50	LT	50	37.5	1			1		112.5			4	2							STAUNTON RD
WESTBOUND 1-70																				
908+00 TO 911+25	RT			1					12.5	325		4	1							
915+25 TO 919+12	LT	50					1		37.5	300		4	1							DEPARTING
915+50 TO 918+25	RT	50					1		37.5	237.5		4	1							
931+00 TO 931+80	LT									62.5		4								
931+80 TO 934+86	RT						1		37.5	250	25	4	1							
932+60 TO 936+70	LT									237.5		4								
952+25	RT								12.5											
952+26	LT								12.5											
959+75 TO 964+00	RT	62.5					1			262.5		4	1							RIGGIN RD
959+75 TO 961+00	LT	50	37.5	1			1		100			4	2							RIGGIN RD
975+25	RT													1				1		SIGN TRUSS
975+25	LT													1				1		SIGN TRUSS
997+50 TO 1002+85	RT	162.5			1				25	300		4	1		1					WENDELL BR
997+50 TO 1003+90	LT	600			1		1		162.5			4	2							WENDELL BR
1013+00 TO 1014+00	LT	50	37.5	1			1		100			4	2							WENDELL BR
1013+30 TO 1016+25	RT	50					1		37.5	237.5		4	1							STAUNTON RD
WEST BOUND 1-270																				
860+50 TO 864+25	LT	25								300	25	4								
860+55 TO 862+55	RT						1		50	150		4	1							
873+90 TO 875+75	RT								50	50		4								
874+00 TO 876+12	LT								150	25		4								SIGN TRUSS
EASTBOUND 1-270																				
860+50 TO 862+10	RT				1				50	100		4	1							
867+10 TO 871+60	RT						1		50	375	25	4	1							RAMP G7
868+45 TO 872+20	LT									287.5		4								
RAMP																				
G5	LT								250			4				2				RAMP G5 & G6
G4	LT								400			4				2				RAMP G3 & G4
G6	RT						1		37.5	150		4	1							
G7	RT	200					1		237.5	200		4	1							
STAUNTON RD																				
NORTHBOUND	RT						1		50			4	1							
NORTHBOUND	LT						1		50			4	1							
SOUTHBOUND	RT						1		50			4	1							
SOUTHBOUND	LT						1		50			4	1							
RIGGIN RD																				
NORTHBOUND	RT						1		50			4	1							
NORTHBOUND	LT						1		50			4	1							
SOUTHBOUND	RT						1		50			4	1							
SOUTHBOUND	LT						1		50			4	1							
WENDELL BRACH																				
EASTBOUND																			1	STAGE CONST.
WESTBOUND																			1	STAGE CONST.
TOTALS		2100	187.5	275	8	5	8	14	2	2537.5	5187.5	150	156	37	4	2	4	2	2	2

Notes

- Locations marked by an "*" are completely new runs of guardrail and shall be constructed according to Standard 630001. All other locations shall be constructed, or removed and re-erected, according to the detail "Remove and Re-erect Steel Plate Beam Guardrail". The traffic barrier terminals shall installed to match the details of the guardrail to which it is attached.
- The guardrail and terminals will be paid for per the items shown in the Summary of Quantities regardless of the Standards or details used.

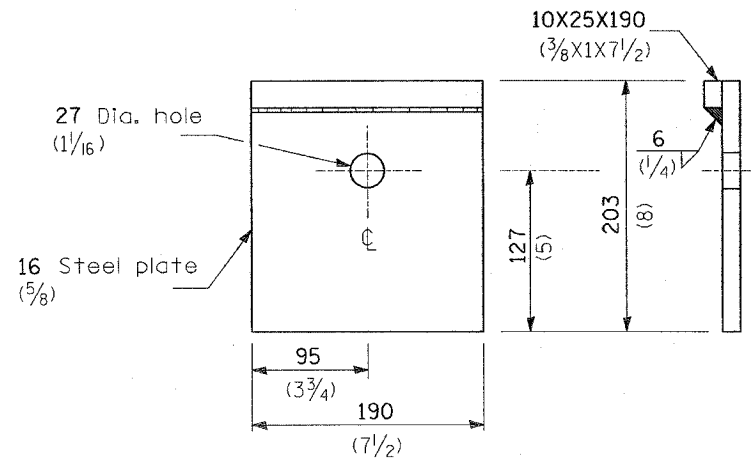
FRENCH DRAIN SCHEDULE

LOCATIONS	PAVED SHOULDER REMOVAL	REMOVAL AND DISPOSAL OF UNSUITABLE MATERIAL	FRENCH DRAIN	GEOTECHNICAL FABRIC FOR FRENCH DRAIN	HOT-MIX ASPHALT SHOULDERS, 13"
	SQ YD	CU YD	CU YD	SQ YD	SQ YD
ESTIMATE 5 LOCATIONS, 6' WIDE EACH, ALL THROUGH 10' SHOULDER, APPROXIMATELY 32' TO DAYLIGHT	6' WIDE REMOVAL • 10' WIDE SHOULDER • 9 SY/FT • 5 LOCATIONS	6' WIDE TRENCH • 32' LONG • 1' DEEP • 1CY/27CF • 5 LOCATIONS	6' WIDE TRENCH • 32' LONG • 1' DEEP • 1CY/27CF • 5 LOCATIONS	6' WIDE TRENCH • 32' LONG • 1' DEEP • 1SY/9SF • 5 LOCATIONS	6' WIDE REMOVAL • 10' WIDE SHOULDER • 9 SY/FT • 5 LOCATIONS
TOTALS	35	35	35	285	35

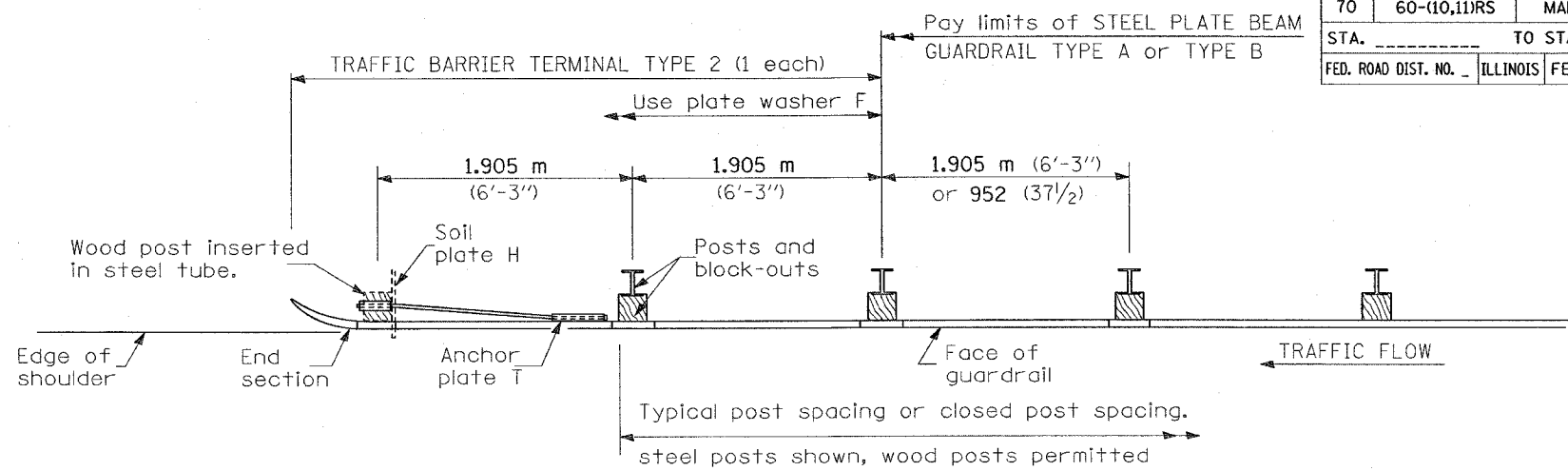
REVISIONS		ILLINOIS DEPARTMENT OF TRANSPORTATION SCHEDULES FAI ROUTE 70 SECTION 60-(10,11)RS MADISON COUNTY
NAME	DATE	
SCALE: VERT. _____	HORIZ. _____	DRAWN BY _____
DATE _____		CHECKED BY _____

PLOT DATE = #DATE#
FILE NAME = #FILE#
PLOT SCALE = #SCALE#
REFERENCE = #REF#

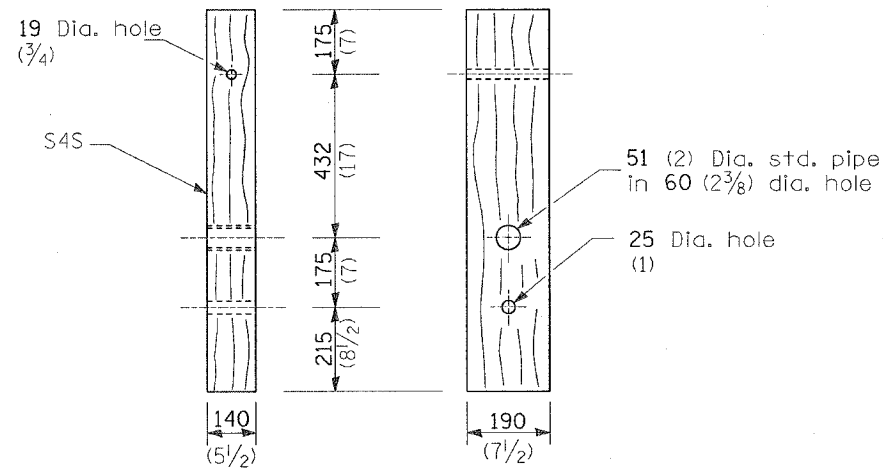
F.A.I. RTE.	SECTION	COUNTY	TOTAL SHEETS	SHEET NO.
70	60-(10,11)RS	MADISON	156	156E.
STA. _____		TO STA. _____		
FED. ROAD DIST. NO. _____	ILLINOIS	FED. AID PROJECT		



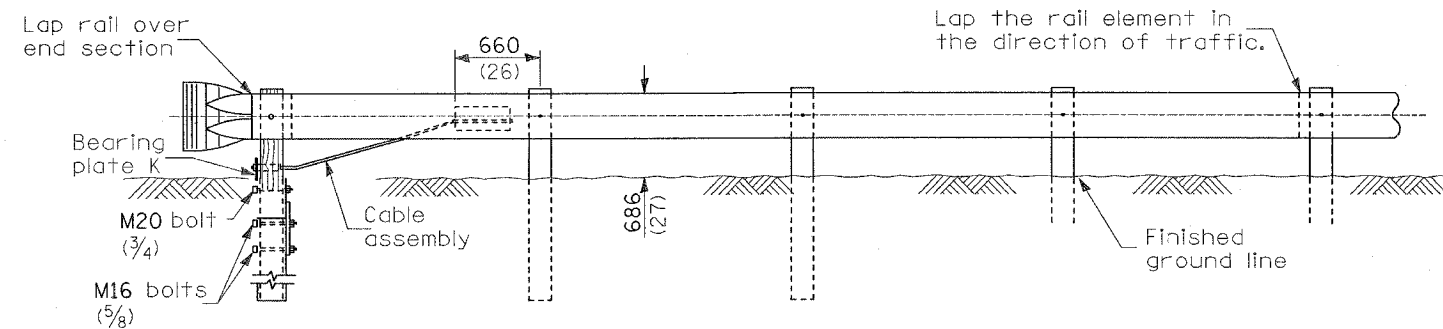
BEARING PLATE K



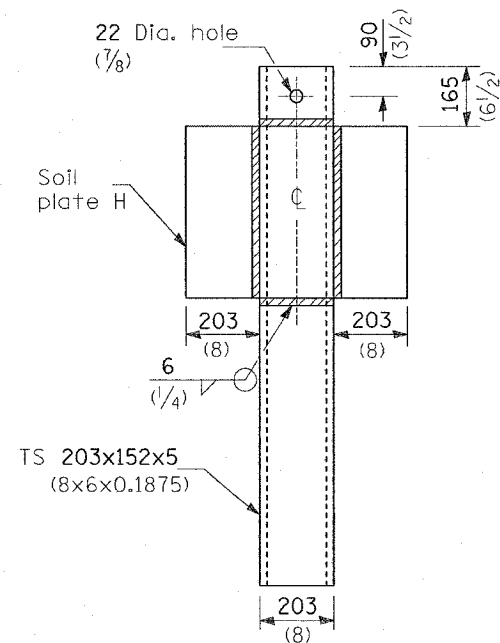
PLAN



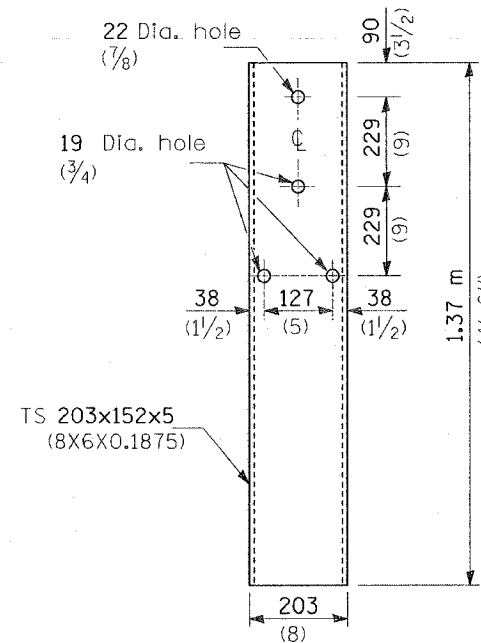
WOOD POST



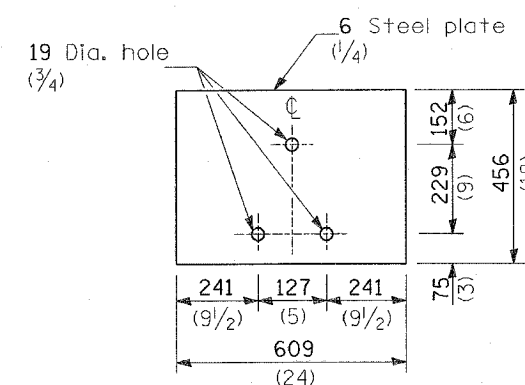
ELEVATION



ALTERNATE SOIL PLATE CONNECTION



STEEL TUBE



SOIL PLATE H

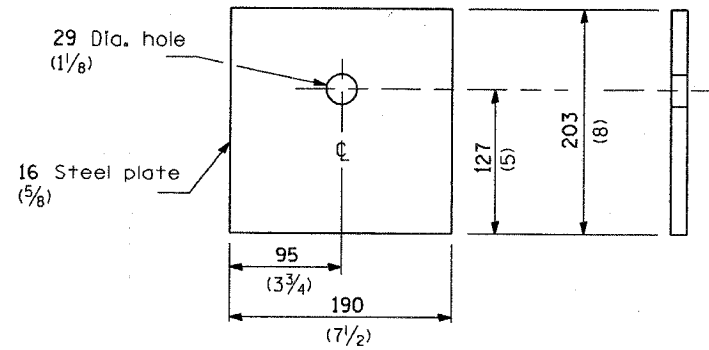
GENERAL NOTES

- Use plate washer F at all posts.
- The bearing plate K shall be held in position by (2) two eight penny nails driven into the post and bent over the top of the plate.
- All dimensions are in millimeters (inches) unless otherwise shown.

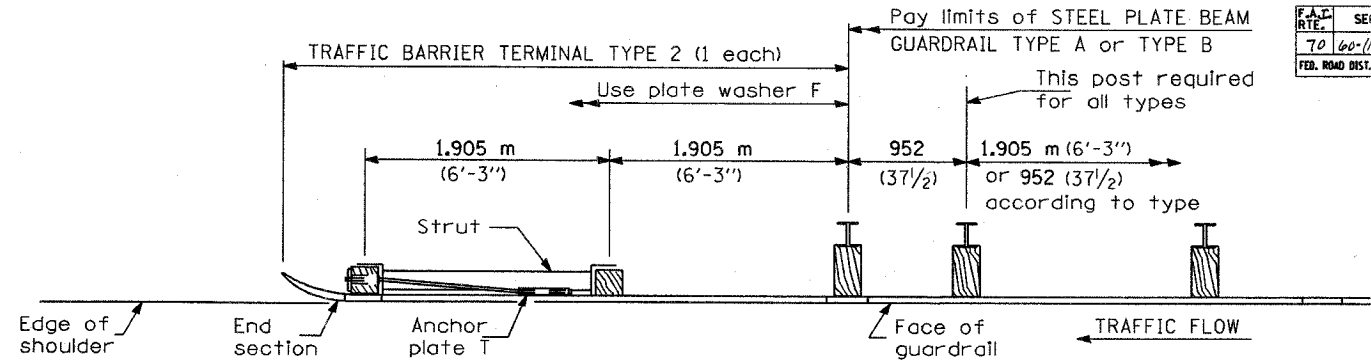
TRAFFIC BARRIER
TERMINAL TYPE 2

DETAILS

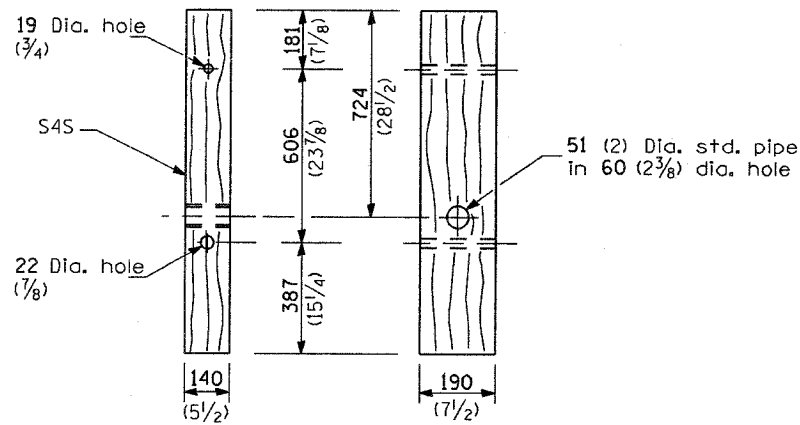
F.A.C. RTE.	SECTION	COUNTY	TOTAL SHEETS	SHEET NO.
70	60-10.11)RS	Madison	156	156f.
FED. ROAD DIST. NO.		ILLINOIS FED. AID PROJECT		



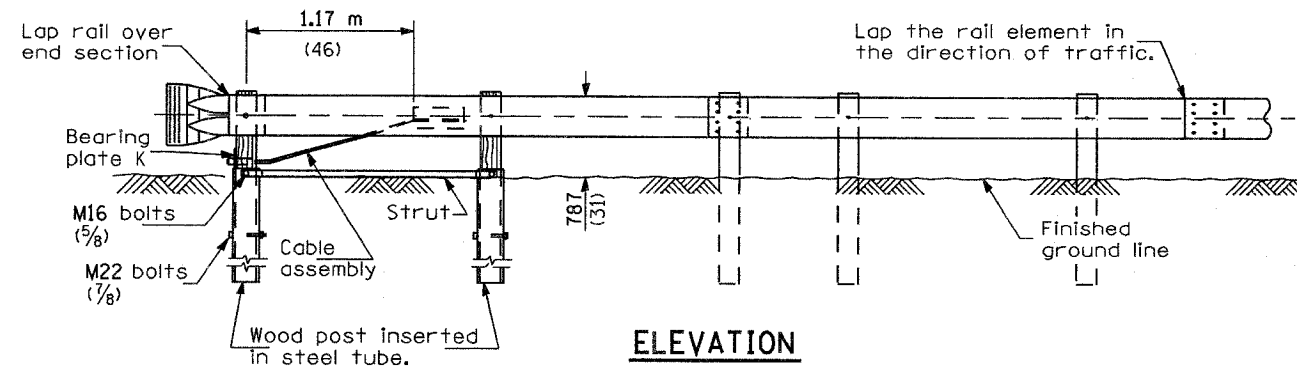
BEARING PLATE K



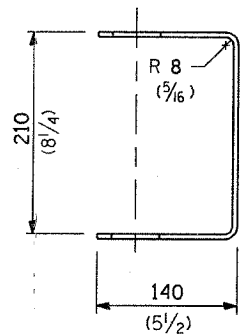
PLAN



WOOD POST

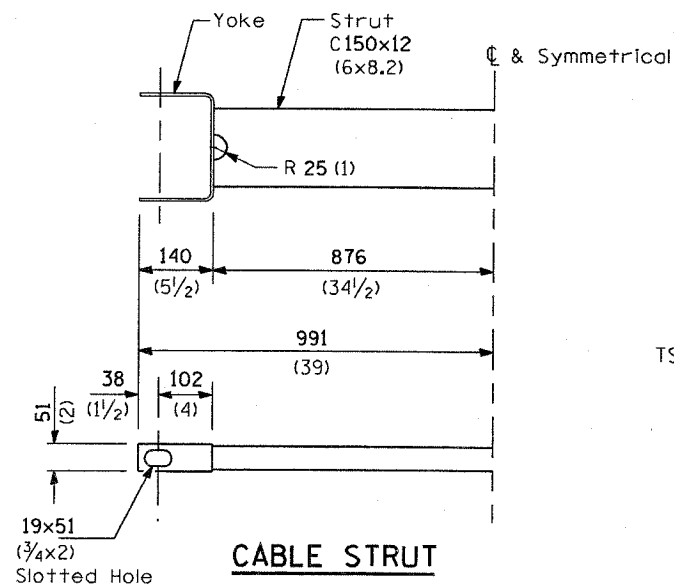


ELEVATION

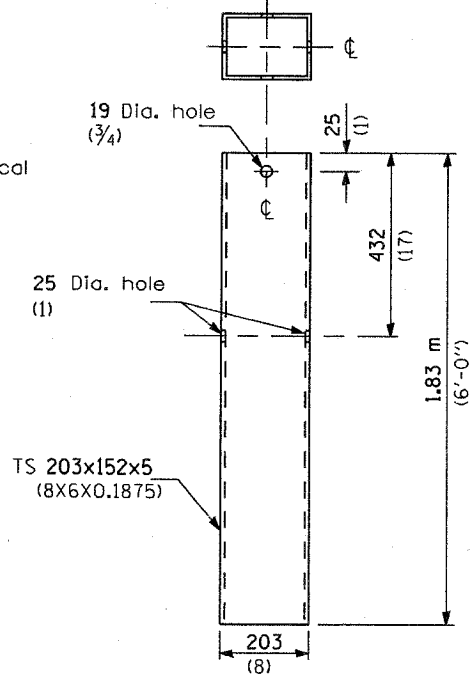


YOKE

5 (3/16) thick steel



CABLE STRUT



STEEL TUBE

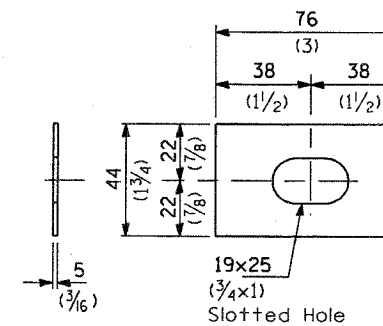


PLATE WASHER F

GENERAL NOTES

See Standard 630001 for details of guardrail not shown.

The bearing plate K shall be held in position by (2) two eight penny nails driven into the post and bent over the top of the plate.

All dimensions are in millimeters (inches) unless otherwise shown.

TRAFFIC BARRIER TERMINAL, TYPE 2

DETAIL

ADDED SHEET 2-20-07

(FOR USE WITH STD. 630001)