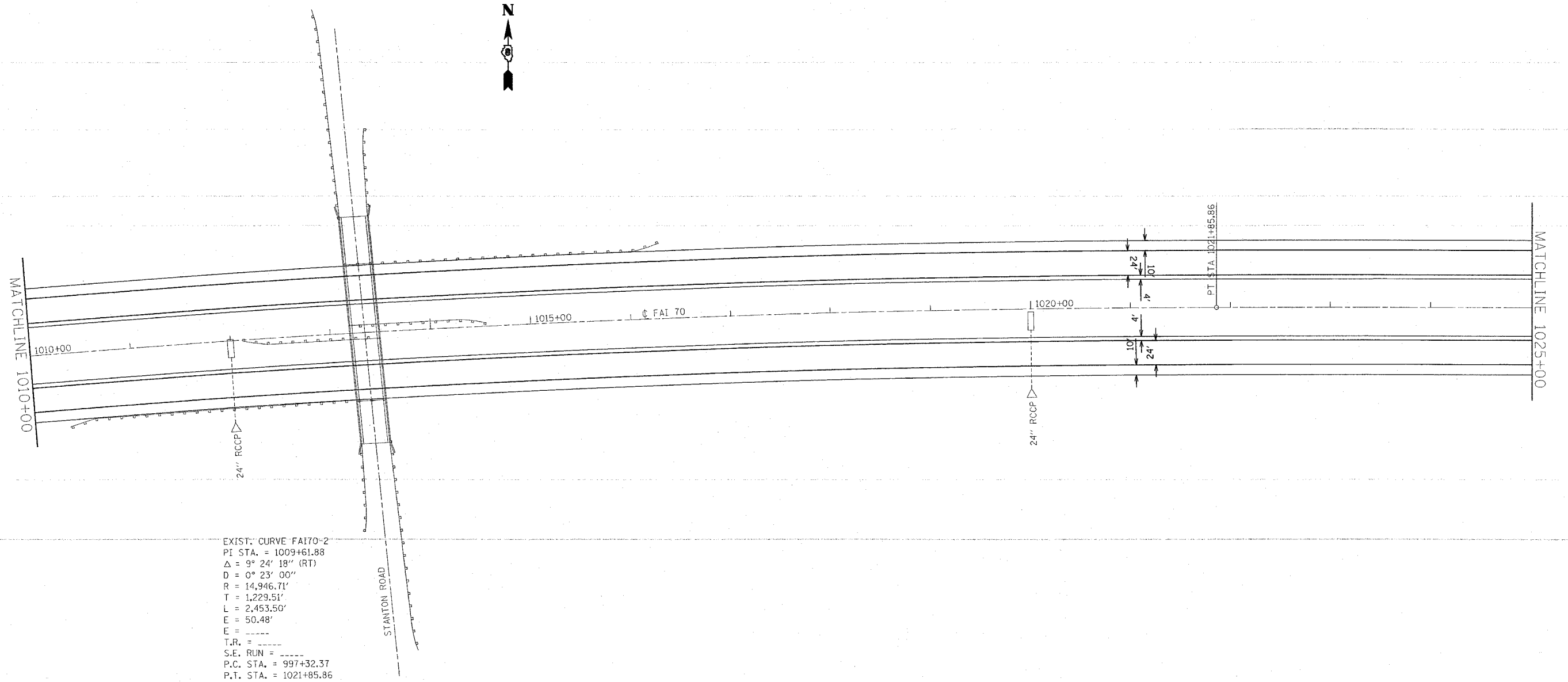


F.A.I. RTE.	SECTION	COUNTY	TOTAL SHEETS	SHEET NO.
70	60-(10,11)RS	MADISON	156	32
STA. _____		TO STA. _____		
FED. ROAD DIST. NO. _____		ILLINOIS FED. AID PROJECT		



EXIST. CURVE FAI70-2  
 PI STA. = 1009+61.88  
 $\Delta = 9^\circ 24' 18''$  (RT)  
 $D = 0^\circ 23' 00''$   
 $R = 14,946.71'$   
 $T = 1,229.51'$   
 $L = 2,453.50'$   
 $E = 50.48'$   
 $T.R. =$   
 $S.E. RUN =$   
 $P.C. STA. = 997+32.37$   
 $P.T. STA. = 1021+85.86$

PLOT DATE = #DATE#  
 PLOT SCALE = #SCALE#  
 REFERENCE = #REF#

REVISIONS	
NAME	DATE

ILLINOIS DEPARTMENT OF TRANSPORTATION  
**PLAN VIEW**  
**EASTBOUND AND WESTBOUND 70**  
 FAI 70  
 SECTION 60-(10,11)RS  
 MADISON COUNTY

SCALE: VERT. \_\_\_\_\_  
 HORIZ. \_\_\_\_\_  
 DATE \_\_\_\_\_

DRAWN BY \_\_\_\_\_  
 CHECKED BY \_\_\_\_\_