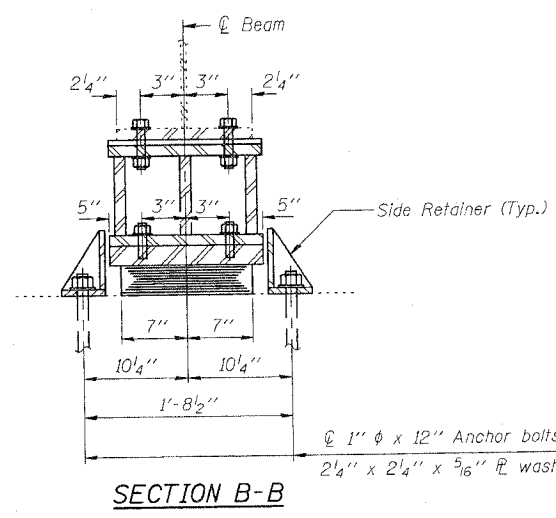
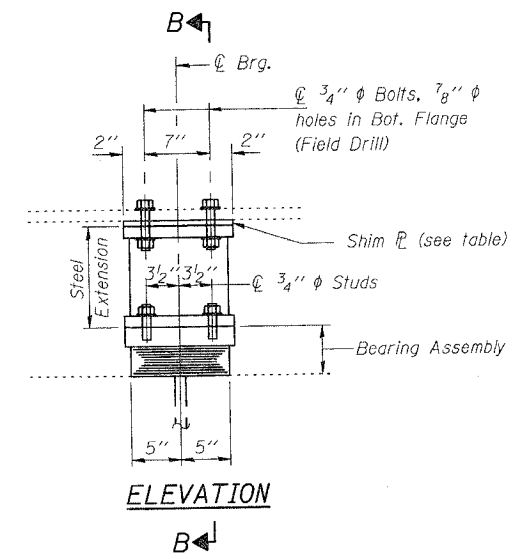


STATE OF ILLINOIS
 DEPARTMENT OF TRANSPORTATION

SHEET 7
 OF 9

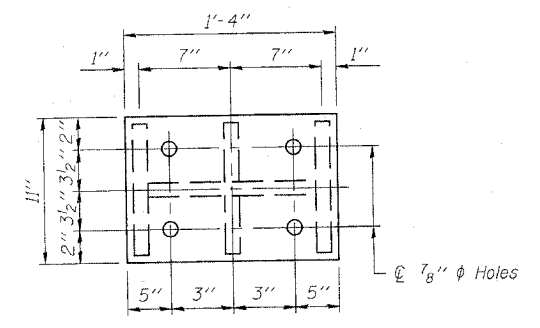


INTERIOR GIRDER REACTION TABLE

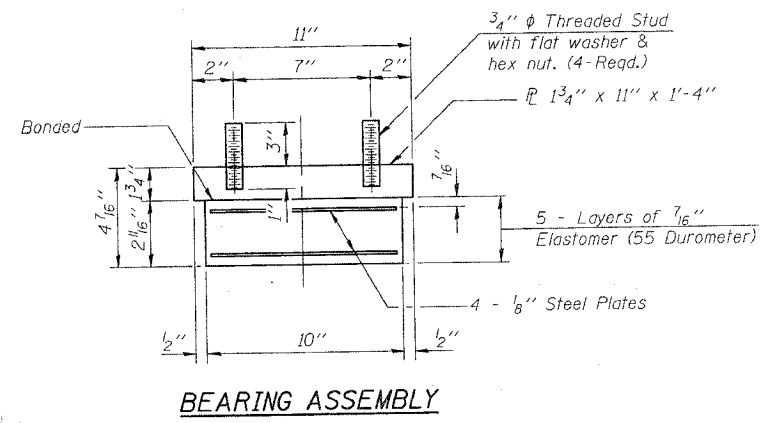
R (DL)	(K)	56.6
R (LL)	(K)	39.2
R (Imp)	(K)	11.2
R (Total)	(K)	107.0
Minimum Jack Capacity	(Tons)	55

SHIM PLATE THICKNESS TABLE

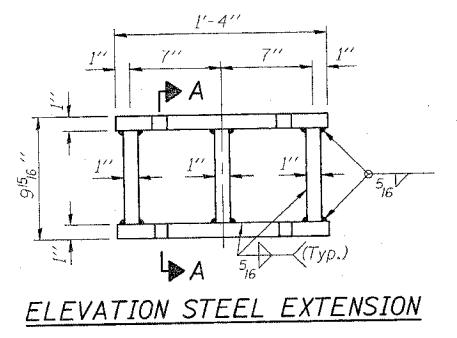
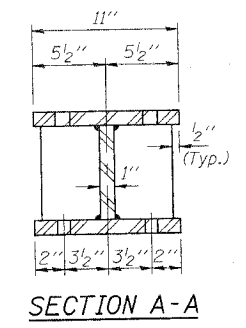
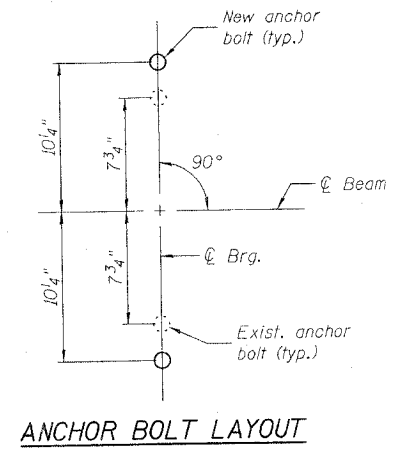
Beam 10	(in)	1/4"
Beam 11	(in)	3/8"



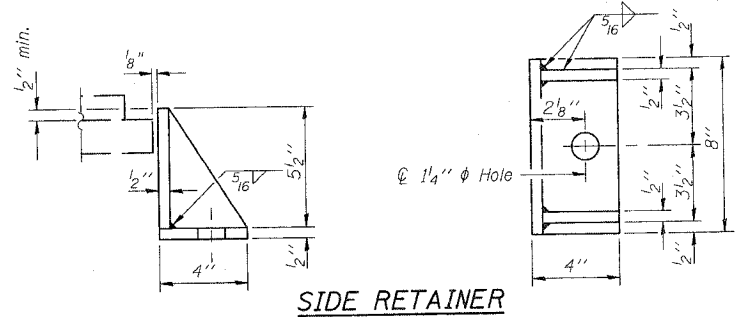
TYPE I ELASTOMERIC EXP. BRG.



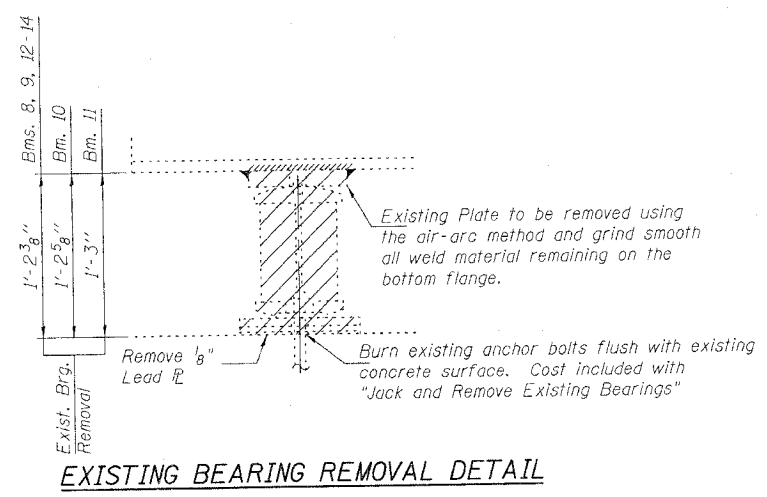
Note:
 Shim plates shall not be placed under Bearing Assembly.



NOTES:
 See Sheet 6 of 9 for Notes and Bill of Material.



Equivalent rolled angle with stiffeners will be allowed in lieu of welded plates.



BEARINGS - PIER 2
 FAI 70 (EB) OVER
 WENDELL BRANCH
 FAI ROUTE 70 SECTION 60-10B
 MADISON COUNTY
 STATION 996+73.85
 STRUCTURE NO. 060-0023

JD Johnson, Depp & Quisenberry
 CONSULTING ENGINEERS
 Springfield, Illinois

DESIGNED: CDB	DRAWN: P. Ray
CHECKED: DCD	CHECKED: CDB/DCD

FILE: J:\D00\1042 IL-DBWV5 I-70 Bridge Repair\2-SM60-0023 WendellB-EB\07Bear-ings2.dgn
 USER: DCD
 DATE: 01/12/2007 16:41:40
 I-2-E1