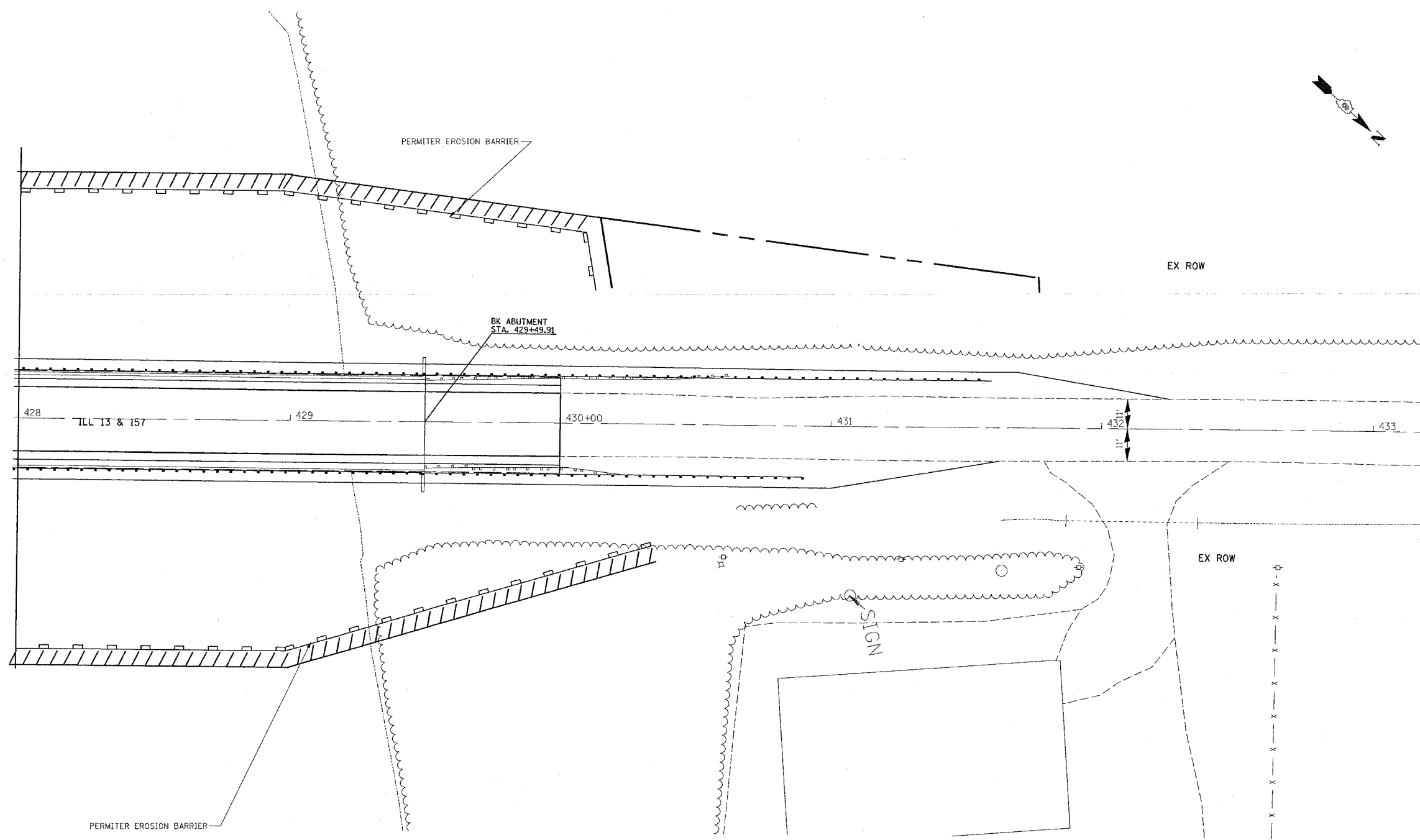
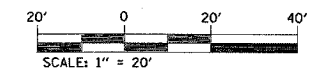


F.A.P. RTE.	SECTION	COUNTY	TOTAL SHEETS	SHEET NO.
592	28BR-2,3	ST. CLAIR	51	8b
STA.		TO STA.		
FED. ROAD DIST. NO.		ILLINOIS FED. AID PROJECT		



PLOT DATE = 2/20/2007
 FILE NAME = c:\p\proj\28br23\28br23.dgn
 PLOT SCALE = 28.0000 / 1" = 20'
 USER NAME = chlandesko

REVISIONS	
NAME	DATE



ILLINOIS DEPARTMENT OF TRANSPORTATION
EROSION CONTROL
 FAP ROUTE 592 (IL13/157)
 SECTION 28BR-2,3
 ST. CLAIR COUNTY

▲ ADDED SHEET 2-26-07