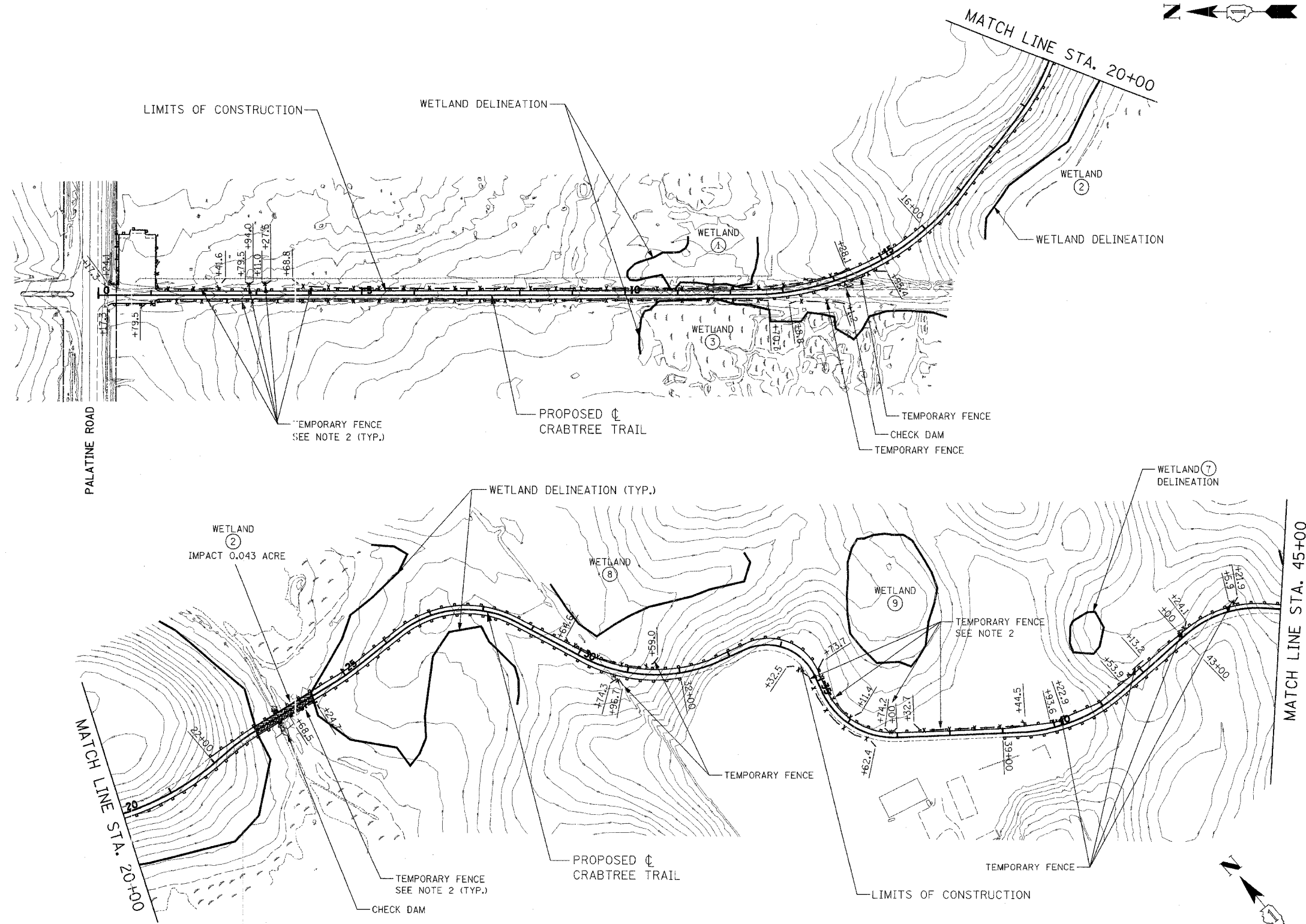


FILE NO.	SECTION	COUNTY	TOTAL SHEETS	SHEET NO.
	94-F3000-06-BT	COOK	105	49
STA. 0+00	TO STA. 45+00			
FED. ROAD DIST. NO.	ILLINOIS	83709	STPE-0001(479)	

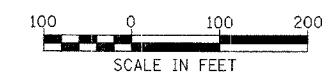
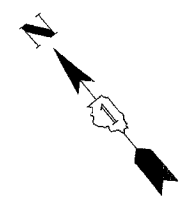


LEGEND:

- PERIMETER EROSION BARRIER
- TEMPORARY FENCE
- WETLAND IMPACT AREA
- CHECK DAM

NOTES:

1. ADDITIONAL TEMPORARY FENCE MAY BE USED AS DETERMINED BY ENGINEER IN FIELD TO PROTECT TREES AND WETLAND DURING CONSTRUCTION.
2. TEMPORARY FENCE LOCATIONS ARE DEFINED BY BEGINNING AND END STATIONING AS SHOWN.
3. TEMPORARY EROSION CONTROL SHALL BE IN ACCORDANCE WITH IDOT SPECIFICATIONS FOR ROAD AND BRIDGE CONTRUCTION (ADOPTED JANUARY 1, 2007), SECTION 280.
4. THE PLACEMENT OF CHECK DAMS SHALL BE DETERMINED BY THE ENGINEER IN THE FIELD. THE CHECK DAMS SHALL BE EITHER ROLLED COIR LOGS, GEOSYNTHETIC BARRIERS, OR COMPOST SOCKS. THE CHECK DAMS SHALL BE INSTALLED PER THE MANUFACTURES SPECIFICATIONS (MAKING SURE THAT THE MIDDLE OF THE CHECK DAM IS LOWER THAN THE ENDS) AND APPROVED BY THE ENGINEER IN THE FIELD AND THE NORTH COOK COUNTY SOIL & WATER CONSERVATION DISTRICT REPRESENTATIVE.
5. SILT FENCES AT LOW POINTS SHALL BE WIRE-BACKED AND SUPPLEMENTED WITH METAL POSTS.



ILLINOIS DEPARTMENT OF TRANSPORTATION
DISTRICT NO. 1 SCHAUMBURG

EROSION CONTROL PLAN

SCALE AS NOTED
DATE MARCH 24, 2006

DRAWN BY REW
CHECKED BY SMH