

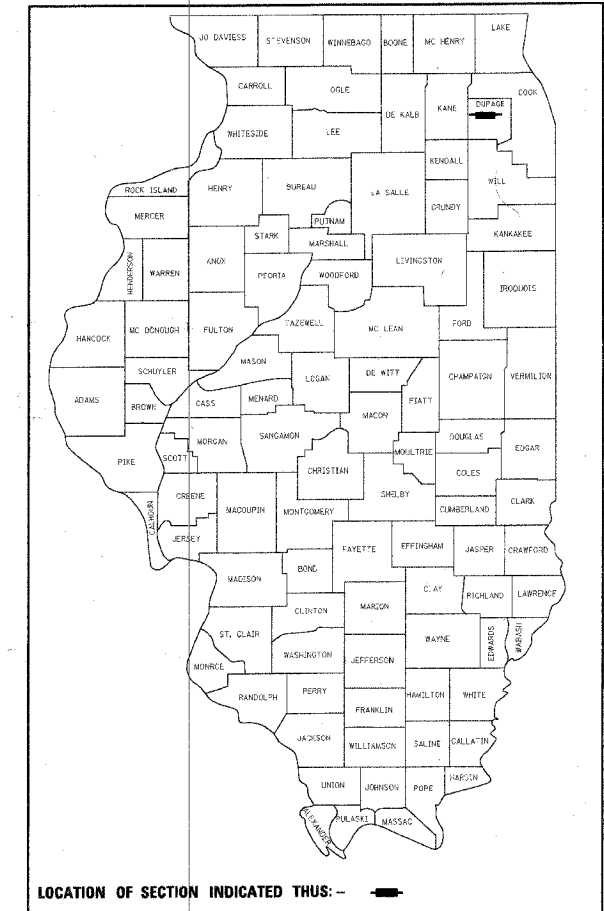
STATE OF ILLINOIS
DEPARTMENT OF TRANSPORTATION
DIVISION OF HIGHWAYS

PLANS FOR PROPOSED
FEDERAL AID HIGHWAY

F.A.U. 1389 (HAWTHORNE LANE)
STP Section No.: 99-00062-00-PV
Project No. ACM-8003 (501)
F.A.U. 2530 (POWIS ROAD) TO F.A.U. 2534 (ARBOR AVENUE)
ROADWAY RECONSTRUCTION
DUPAGE COUNTY
JOB No.: C-91-176-05

F.A.U. RTE.	SECTION	COUNTY	TOTAL SHEETS	SHEET NO.
1389	99-00062-00-PV	DUPAGE	199	1
FED. ROAD DIST. NO. 1 ILLINOIS FED. AID PROJECT				
CONTRACT No. 83873				

SHEET NO.	DESCRIPTION
1	COVER SHEET
2	INDEX OF STATE STANDARDS, GENERAL NOTES
3-5	SUMMARY OF QUANTITIES
6-9	TYPICAL SECTIONS
10-13	SCHEDULE OF QUANTITIES
14-16	DRAINAGE SCHEDULE
17	ALIGNMENT, TIES AND BENCHMARKS
18-38	ROADWAY PLAN AND PROFILE
39-47	SHARED USE PATH PROFILE
48-49	DETOUR NOTES AND PLAN
50-51	SUGGESTED MAINTENANCE OF TRAFFIC - TYPICAL SECTIONS AND NOTES
52-64	SUGGESTED MAINTENANCE OF TRAFFIC PLAN
65-71	EROSION CONTROL AND LANDSCAPING PLAN
72-93	DRAINAGE PLAN AND PROFILE
94-97	INTERSECTION DETAIL PLAN
98-99	ROADWAY DETAILS
100-101	DRAINAGE DETAILS
102-104	DETENTION POND GRADING PLAN
105	RAILROAD CROSSINGS DETAILS
106-109	PAVEMENT MARKING
110-117	LIGHTING PLAN AND DETAIL
118-121	STRUCTURAL SHEETS
122	OUTLET FOR CONCRETE CURB AND GUTTER (BD03)
123	STORM SEWER CONNECTION TO EXISTING SEWER (BD07)
124	BUTT JOINTS AND BITUMINOUS TAPER (BD32)
125	TRAFFIC CONTROL AND PROTECTION FOR SIDE ROADS, INTERSECTIONS AND DRIVEWAYS (TC10)
126	DISTRICT ONE TYPICAL PAVEMENT MARKINGS (TC13)
127	PAVEMENT MARKING LETTERS AND SYMBOLS FOR TRAFFIC STAGING (TC16)
128	TEMPORARY INFORMATION SIGNING (TC22)
129-193	CROSS-SECTIONS HAWTHORNE LANE
194-197	CROSS-SECTIONS POWIS ROAD
198-199	CROSS-SECTIONS PILSEN AVENUE



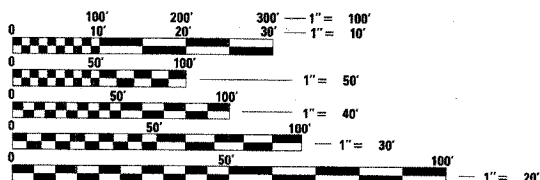
LIST OF STATE STANDARDS LOCATED ON SHEET NO. 2

PROJECT LOCATED IN THE CITY OF WEST CHICAGO

THE CONTRACTOR SHALL BE SOLELY RESPONSIBLE FOR JOB SITE SAFETY AS WELL AS SUPERVISION/DIRECTION AND MEANS/METHODS OF CONSTRUCTION.

CALL JULIE 1-800-892-0123 WITH THE FOLLOWING:

COUNTY DUPAGE
CITY-TOWNSHIP WEST CHICAGO - WINFIELD & WAYNE
SEC. & 1/4 SEC. NO. # T40N R9E SEC32.33.34 T39N R9E SEC3.4.5
48 HOURS BEFORE YOU DIG.
EXCLUDING SAT., SUN., & HOLIDAYS

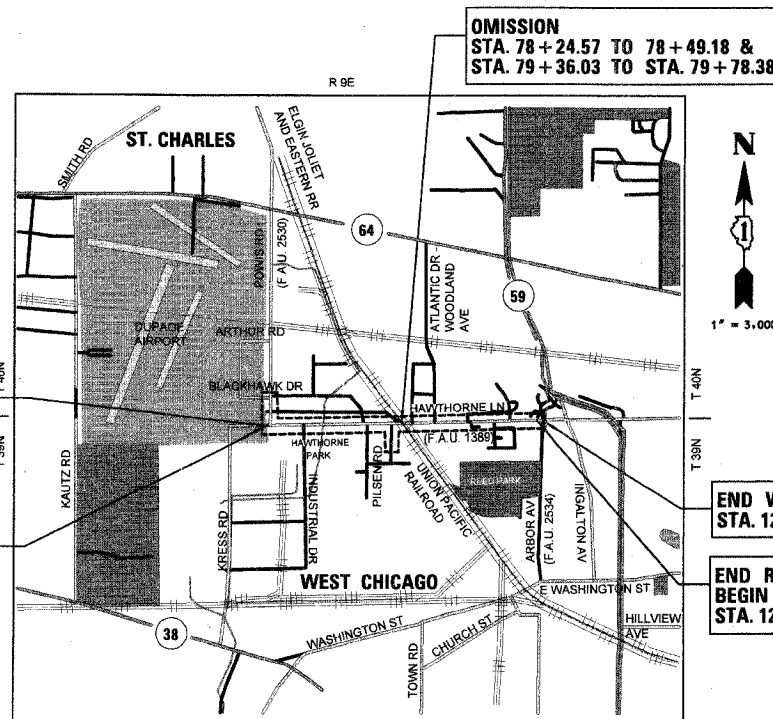


FULL SIZE PLANS HAVE BEEN PREPARED USING STANDARD ENGINEERING SCALES. REDUCED SIZED PLANS WILL NOT CONFORM TO STANDARD SCALES. IN MAKING MEASUREMENTS ON REDUCED PLANS, THE ABOVE SCALES MAY BE USED.

CONTRACT NO. 83873

BEGIN WIDENING & RESURFACING STA. 23 + 84.00

END WIDENING & RESURFACING BEGIN RECONSTRUCTION STA. 29 + 30.00



LOCATION MAP

GROSS LENGTH OF PROJECT = 1.949 MILES (10,290 FEET)
NET LENGTH OF PROJECT = 1.936 MILES (10,223 FEET)

DESIGN DESIGNATION
F.A.U. 1389 (HAWTHORNE LANE) = 1149 (25) COLLECTOR 8.68 (FD-20)

TRAFFIC DATA
F.A.U. 1389 (HAWTHORNE LANE) AADT = 8,750 (2005); 13,000 (2030)
F.A.U. 2530 (POWIS ROAD) AADT = 9,900 (2005); 18,000 (2025)

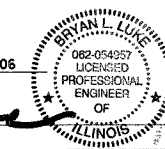
POSTED SPEED LIMIT
F.A.U. 1389 (HAWTHORNE LANE) = 45 MPH WEST OF POWIS ROAD
40 MPH POWIS ROAD TO ATLANTIC DRIVE
35 MPH EAST OF ATLANTIC DRIVE
F.A.U. 2530 (POWIS ROAD) = 45 MPH

END WIDENING & RESURFACING STA. 126 + 73.83

END RECONSTRUCTION BEGIN WIDENING & RESURFACING STA. 124 + 86.00

August 4, 2006

Bryan L. Luke
ILLINOIS REGISTRATION No. 062-054957
EXPIRATION DATE: 11/30/2007



STATE OF ILLINOIS DEPARTMENT OF TRANSPORTATION DIVISION OF HIGHWAYS	
APPROVED	August 7, 2006 CITY OF WEST CHICAGO, <i>Diann Weiss</i> Director
PASSED	JANUARY 3, 2007 CITY OF WEST CHICAGO, <i>Christopher Holt</i> DISTRICT 1 ENGINEER OF LOCAL ROADS AND STREETS
RELEASING FOR BID BASED ON LIMITED REVIEW	JANUARY 3, 2007 Diann O'Keefe, DEPUTY DIRECTOR OF HIGHWAYS, REGION 1 ENGINEER

CHRISTOPHER B. BURKE
ENGINEERING LTD.
9575 West Higgins Road, Suite 600
Rosemont, Illinois 60018
(847) 823-0500

PROFESSIONAL DESIGN FIRM NO.: 184-001175
EXPIRATION DATE: APRIL 30, 2007