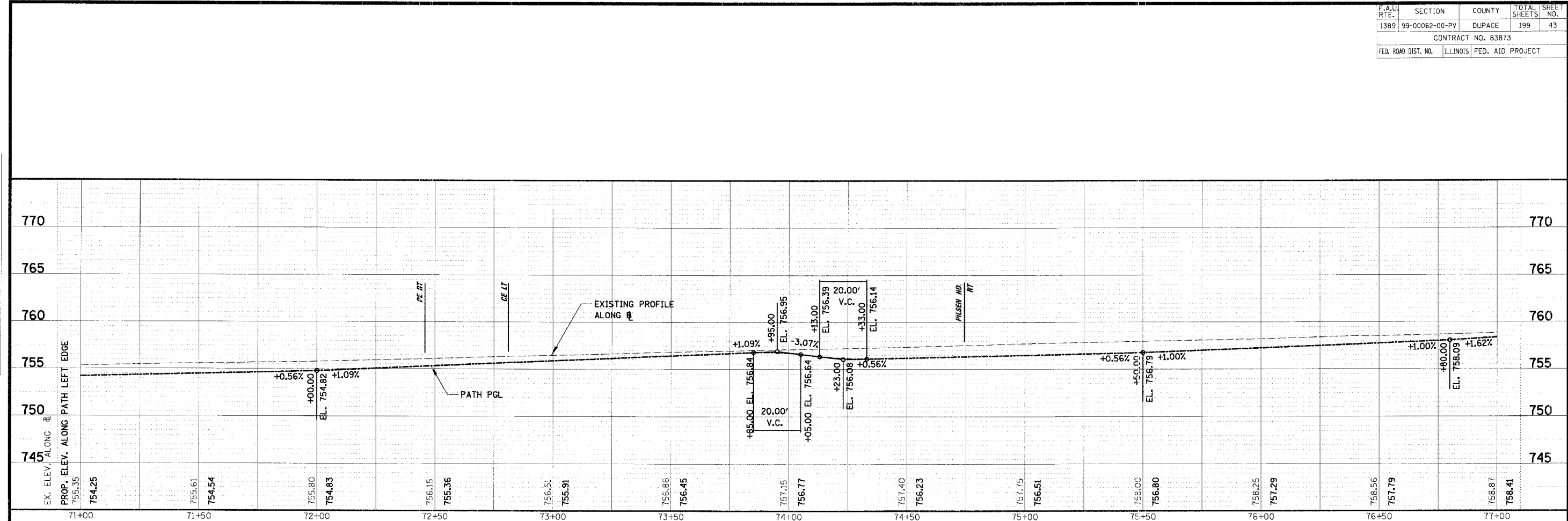


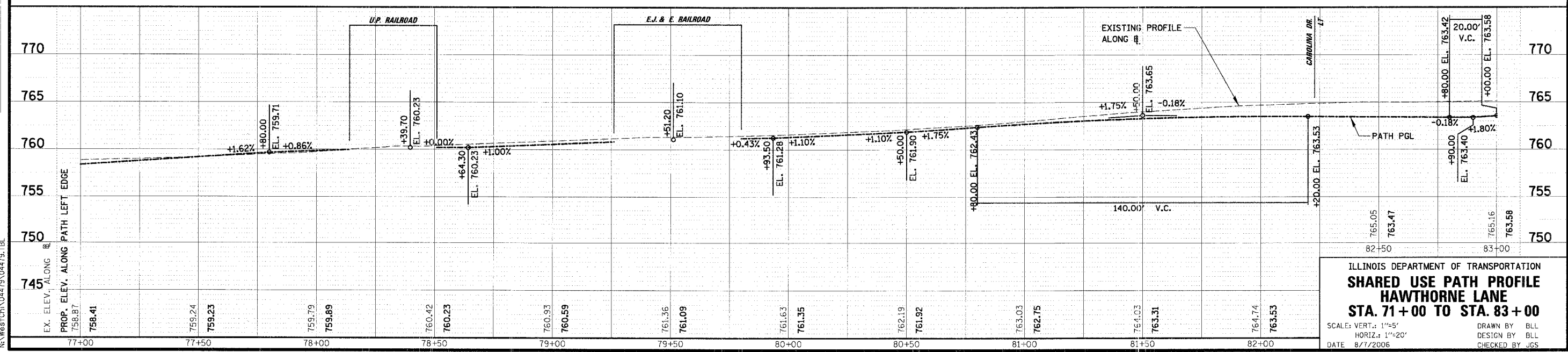
| | | | | |
|---|----------------|--------|--------------|-----------|
| F.A.D. R.T. | SECTION | COUNTY | TOTAL SHEETS | SHEET NO. |
| 1389 | 99-00062-00-PV | DUPAGE | 199 | 43 |
| CONTRACT NO. 83873 | | | | |
| FED. ROAD DIST. NO. ILLINOIS FED. AID PROJECT | | | | |

| | | | |
|-------------|-------------|----|------|
| PLAN | SUBMITTED | BY | DATE |
| NOT CHECKED | NOT CHECKED | | |
| NOT CHECKED | NOT CHECKED | | |
| NOT CHECKED | NOT CHECKED | | |

| | | | |
|-------------|-------------|----|------|
| PROFILE | SUBMITTED | BY | DATE |
| NOT CHECKED | NOT CHECKED | | |
| NOT CHECKED | NOT CHECKED | | |
| NOT CHECKED | NOT CHECKED | | |



NOTE:
ALL PATH VPI'S TO HAVE
5' VERTICAL CURVES, OR AS SHOWN



ILLINOIS DEPARTMENT OF TRANSPORTATION
SHARED USE PATH PROFILE
HAWTHORNE LANE
STA. 71+00 TO STA. 83+00

SCALE: VERT.: 1"=5'
 HORIZ.: 1"=20'
 DATE: 8/7/2006

DESIGN BY: BLL
 CHECKED BY: JGS

N:\WestCh\04479\04479.tbl