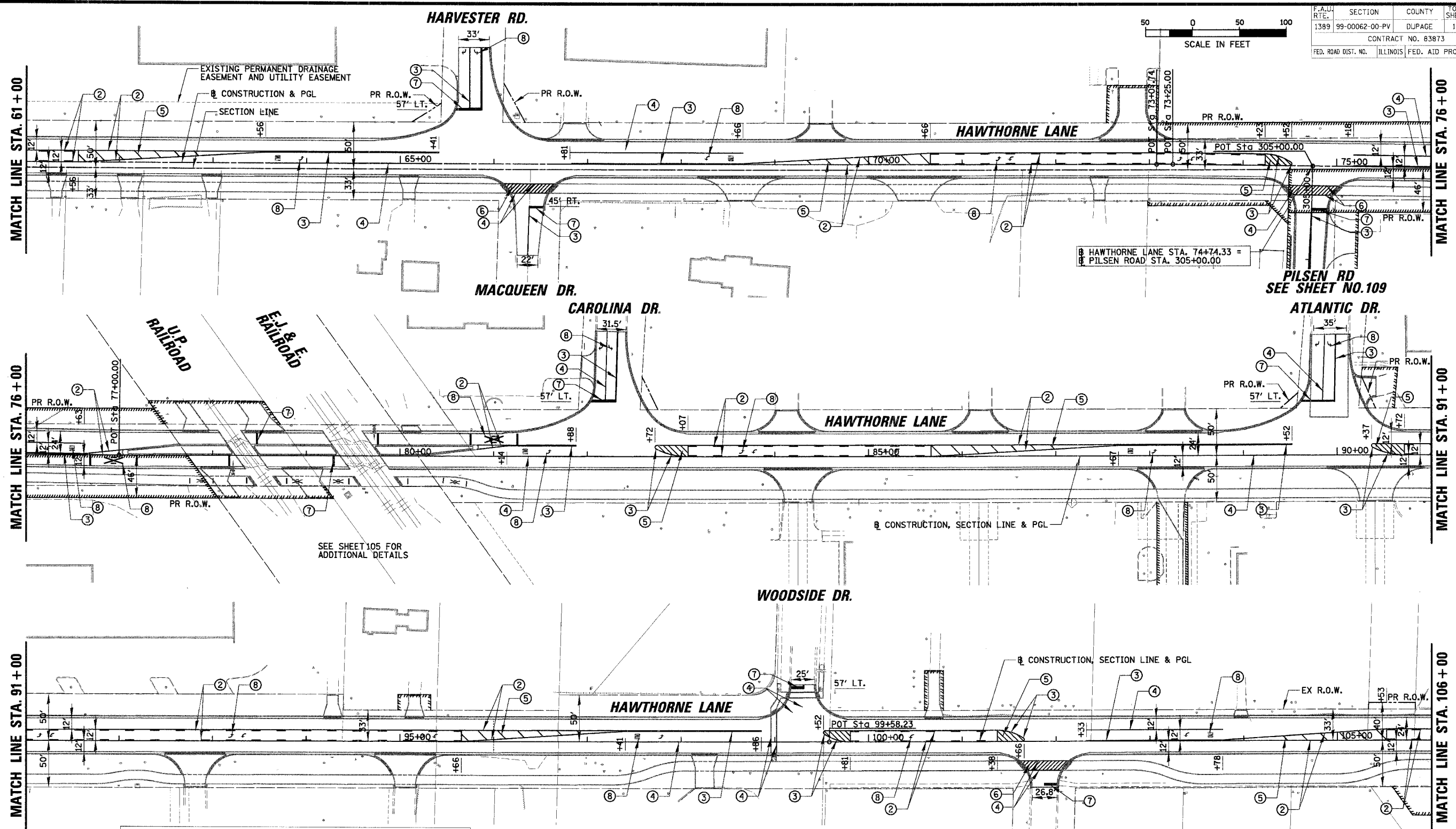
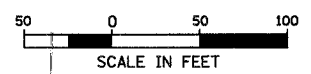


F.A.U. RTE. NO.	SECTION	COUNTY	TOTAL SHEETS	SHEET NO.
1389	99-00062-00-PV	DUPAGE	199	107
CONTRACT NO. 63873				
FED. ROAD DIST. NO. ILLINOIS FED. AID PROJECT				



LEGEND

- ① THERMOPLASTIC PAVEMENT MARKING - LINE 4" (WHITE)
- ② THERMOPLASTIC PAVEMENT MARKING - LINE 4" (YELLOW)
- ③ THERMOPLASTIC PAVEMENT MARKING - LINE 4" (YELLOW) (2 @ 11" C-C)
- ④ THERMOPLASTIC PAVEMENT MARKING - LINE 6" (WHITE)
- ⑤ THERMOPLASTIC PAVEMENT MARKING - LINE 12" (YELLOW)
- ⑥ THERMOPLASTIC PAVEMENT MARKING - LINE 12" (WHITE)
- ⑦ THERMOPLASTIC PAVEMENT MARKING - LINE 24" (WHITE)
- ⑧ THERMOPLASTIC PAVEMENT MARKING - LETTERS AND SYMBOLS (WHITE)
- ⑨ SNOWPLOWABLE RAISED PAVEMENT MARKER (SEE SHEET 98)

REVISIONS	
NAME	DATE

ILLINOIS DEPARTMENT OF TRANSPORTATION
PAVEMENT MARKING
HAWTHORNE LANE
STA. 61+00 TO STA. 106+00
 SCALE: 50'
 DATE: 1/5/2007
 DRAWN BY: PMM
 DESIGN BY: BLL
 CHECKED BY: JGS

N:\westch\04479\04479.TBL