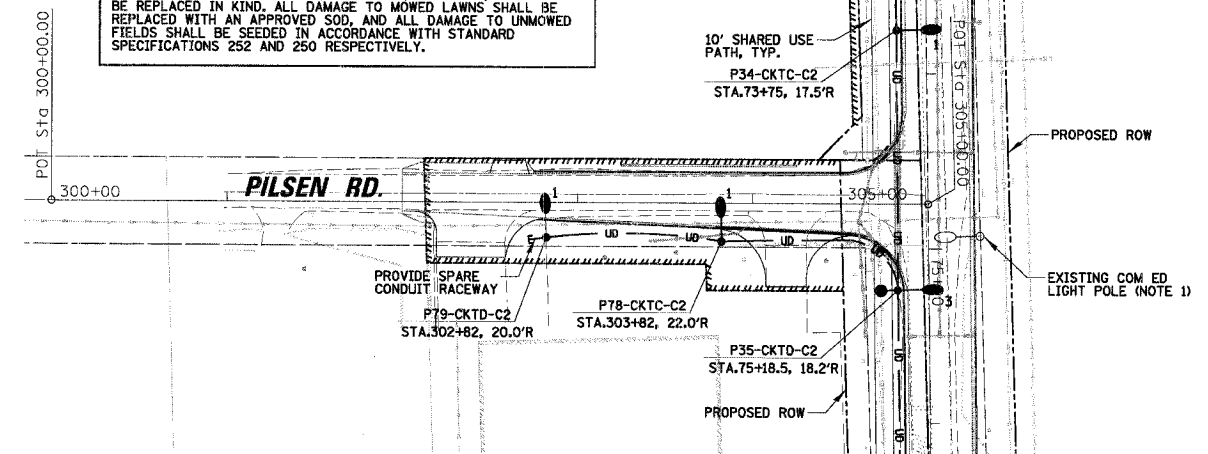


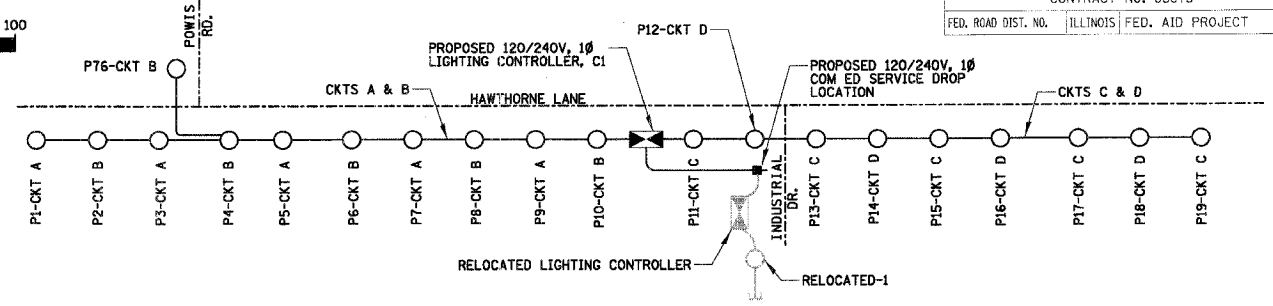
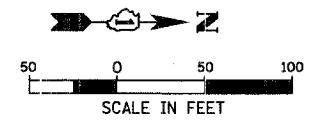
F.A.U. RT. NO.	SECTION	COUNTY	TOTAL SHEETS	SHEET NO.
1389	99-00062-00-PV	DUPAGE	199	114
CONTRACT NO. 83873				
FED. ROAD DIST. NO.	ILLINOIS	FED. AID PROJECT		

RESTORATION OF WORK AREA:
 RESTORATION OF THE LIGHTING/ELECTRICAL WORK AREA SHALL BE INCIDENTAL TO THE RELATED PAY ITEM SUCH AS FOUNDATION, CONDUIT, HANDHOLE, TRENCH AND BACKFILL, ETC., AND NO EXTRA COMPENSATION SHALL BE ALLOWED. ALL ROADWAY SURFACES SUCH AS SHOULDERS, MEDIANS, SIDEWALKS, PAVEMENT, ETC. SHALL BE REPLACED IN KIND. ALL DAMAGE TO MOWED LAWNS SHALL BE REPLACED WITH AN APPROVED SOD, AND ALL DAMAGE TO UNMOWED FIELDS SHALL BE SEEDDED IN ACCORDANCE WITH STANDARD SPECIFICATIONS 252 AND 250 RESPECTIVELY.

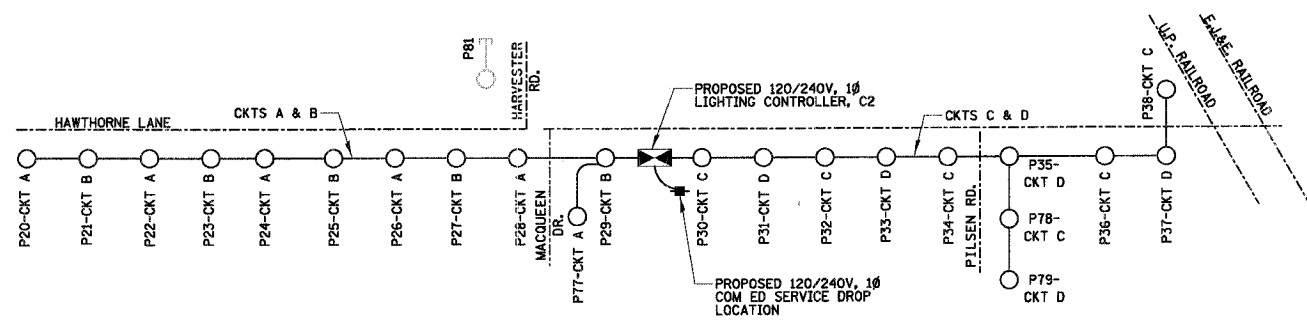


**HAWTHORNE LANE
 (REFER TO LIGHTING PLAN
 SHEETS FOR CONTINUATION)**

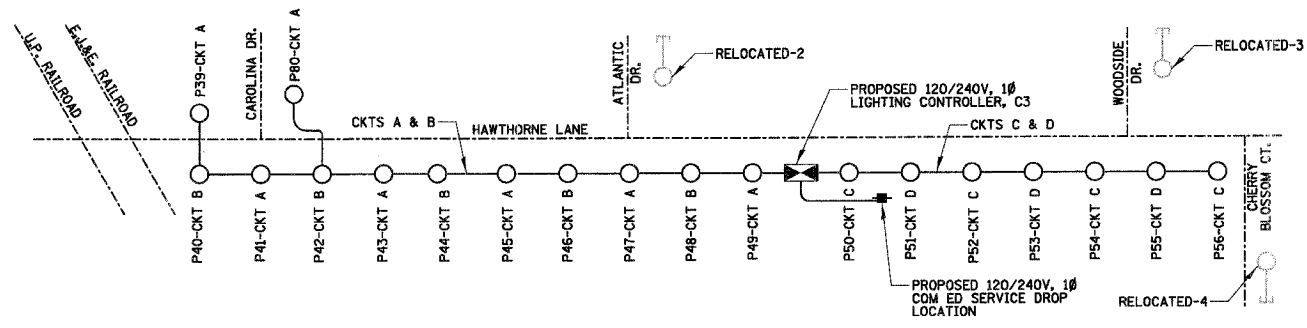
**HAWTHORNE LANE
 (REFER TO LIGHTING PLAN
 SHEETS FOR CONTINUATION)**



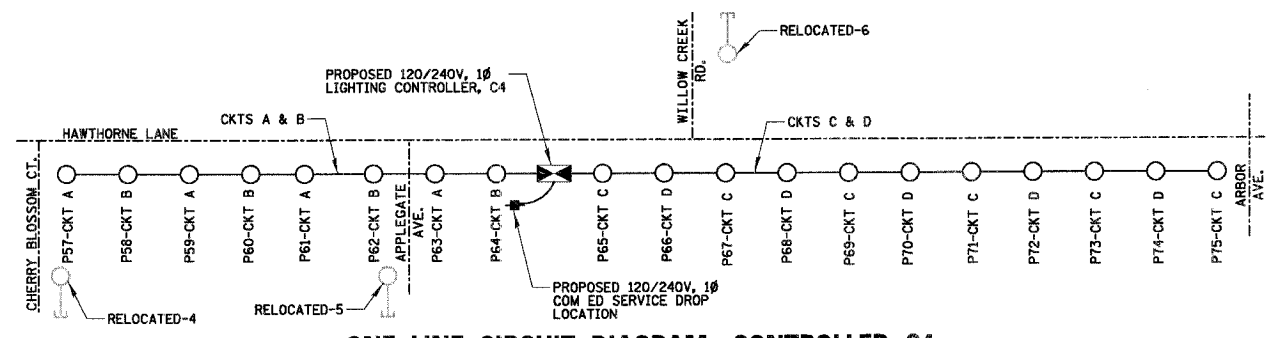
ONE LINE CIRCUIT DIAGRAM CONTROLLER C1
 N.T.S.



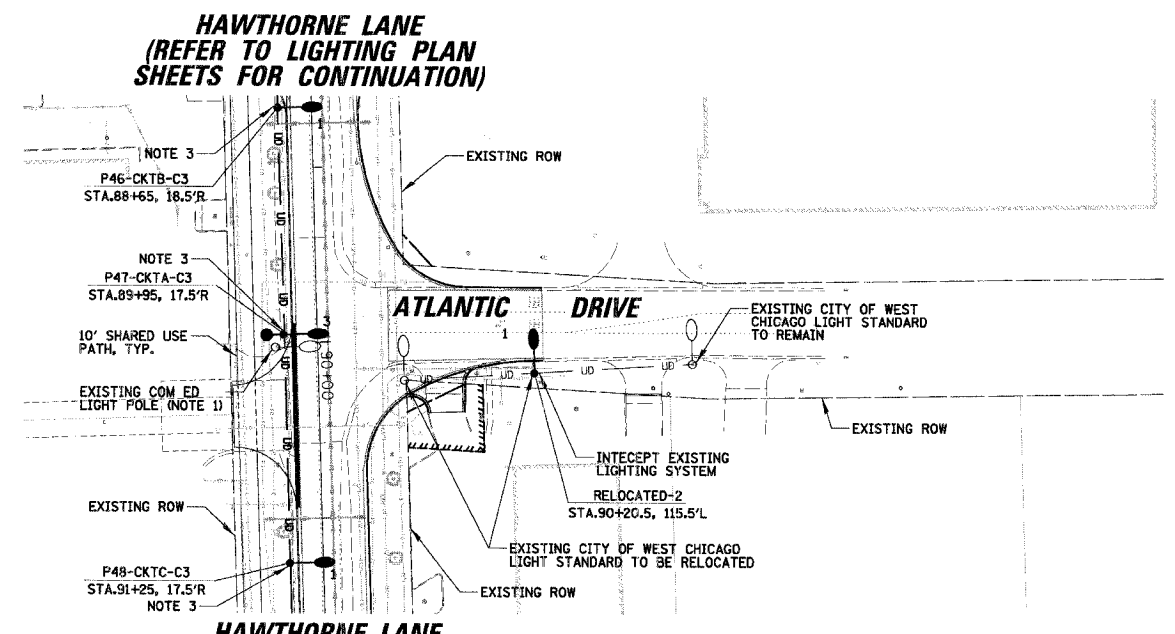
ONE LINE CIRCUIT DIAGRAM CONTROLLER C2
 N.T.S.



ONE LINE CIRCUIT DIAGRAM CONTROLLER C3
 N.T.S.



ONE LINE CIRCUIT DIAGRAM CONTROLLER C4
 N.T.S.



**HAWTHORNE LANE
 (REFER TO LIGHTING PLAN
 SHEETS FOR CONTINUATION)**

**HAWTHORNE LANE
 (REFER TO LIGHTING PLAN
 SHEETS FOR CONTINUATION)**

LEGEND

- 1 PROPOSED 30' ALUMINUM POLE WITH A 250 WATT MCIII COBRA HEAD TYPE LUMINAIRE ON A 12' MAST ARM (REFER TO LIGHTING DETAIL-2 FOR MODEL INFORMATION)
- 2 PROPOSED 35' ALUMINUM POLE WITH A 250 WATT MCIII COBRA HEAD TYPE LUMINAIRE ON A 15' MAST ARM (REFER TO LIGHTING DETAIL-2 FOR MODEL INFORMATION)
- 3 PROPOSED 30' ALUMINUM POLE WITH A 250 WATT MCIII COBRA HEAD TYPE LUMINAIRE ON A 12' MAST ARM AND 50 WATT ORNAMENTAL PEDESTRIAN LUMINAIRE (REFER TO LIGHTING DETAIL-2 FOR MODEL INFORMATION)
- 4 PROPOSED 35' ALUMINUM POLE WITH A 250 WATT MCIII COBRA HEAD TYPE LUMINAIRE ON A 15' MAST ARM AND A 50 WATT ORNAMENTAL PEDESTRIAN LUMINAIRE (REFER TO LIGHTING DETAIL-2 FOR MODEL INFORMATION)
- EXISTING COM ED LIGHT POLE OR CITY OWNED LIGHT POLE (REFER TO PLANS)
- PROPOSED LIGHTING CONTROLLER
- PROPOSED COM ED SERVICE DROP LOCATION
- 4-1/2" #6 AND 1/2" #6 GROUND XLP-TYPE USE IN 1 1/2" UNIT DUCT (OR AS SHOWN ON PLANS)
- PROPOSED UNIT DUCT IN RIGID GALVANIZED STEEL (RGS) CONDUIT PUSHED UNDER PAVEMENT (SIZES AS SHOWN)
- PROPOSED CABLES IN RIGID GALVANIZED STEEL CONDUIT (SIZES AS SHOWN ON PLANS)

- NOTES:**
- EXISTING COM ED POLE WITH LUMINAIRE MOUNTED ON MAST ARM SHALL BE REMOVED BY COM ED AFTER THE PROPOSED LIGHTING SYSTEM HAS BEEN PUT INTO OPERATION. THIS WORK IS TO BE COORDINATED BY THE CONTRACTOR.
 - CONTRACTOR SHALL REMOVE ALL EXISTING LIGHT FOUNDATIONS FROM REMOVED/RELOCATED LIGHT STANDARDS AND DISPOSE.
 - LIGHT STANDARDS P42-P52 SHALL HAVE OFFSET CONCRETE FOUNDATIONS (REFER TO LIGHTING DETAIL-3).

**CAUTION
 NOTICE TO CONTRACTOR**

THE CONTRACTOR IS SPECIFICALLY CAUTIONED THE LOCATION AND/OR ELEVATION OF EXISTING AND PROPOSED UTILITIES AS SHOWN ON THESE PLANS. THE INFORMATION IS NOT TO BE RELIED ON AS BEING EXACT OR COMPLETE. THE CONTRACTOR MUST CALL THE LOCAL UTILITY LOCATION CENTER AT LEAST 72 HOURS BEFORE ANY EXCAVATION TO REQUEST EXACT FIELD LOCATIONS OF THE UTILITIES. IT SHALL BE THE RESPONSIBILITY OF THE CONTRACTOR TO INFORM ENGINEER OF ANY EXISTING UTILITIES WHICH CONFLICT WITH THE PROPOSED IMPROVEMENTS.

- LEGEND**
- ROADWAY LIGHTPOLE
 - ELECTRIC CABLES IN CONDUIT
 - LIGHTING CONTROLLER
 - ELECTRIC SERVICE INSTALLATION
 - POLE NUMBER
 - CIRCUIT IDENTIFIER

REVISIONS	
NAME	DATE

ILLINOIS DEPARTMENT OF TRANSPORTATION
**LIGHTING PLAN FOR
 POWIS ROAD - PILSEN ROAD
 AND ONE LINE DIAGRAMS**

SCALE: 50'
 DATE: 12/7/2006

DRAWN BY: GAH
 DESIGN BY: GAH
 CHECKED BY: JPC

N:\WestCh\104479\04479_04.ctb