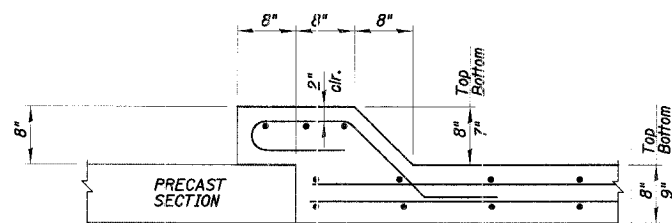


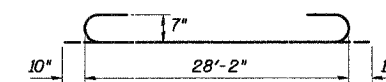
(C) SECTION THRU PRECAST TO CAST-IN-PLACE COLLAR



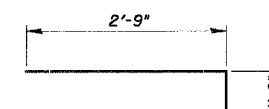
(D) SECTION THRU COLLAR

BILL OF MATERIAL

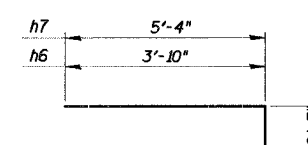
Bar	No.	Size	Length	Shape
a	48	#7	29'-10"	C
a1	48	#7	20'-1"	
a2	20	#4	6'-10"	
d	56	#4	4'-6"	L
h	104	#6	5'-8"	
h1	116	#5	5'-8"	
h2	60	#5	5'-8"	
h3	12	#6	17'-6"	
h4	25	#6	11'-7"	
h5	10	#6	28'-2"	
h6	12	#6	6'-5"	
h7	11	#6	7'-11"	
v	104	#4	6'-1"	
v1	8	#4	10'-4"	
v2	8	#4	4'-8"	
s	28	#4	7'-1"	S
s1	28	#4	6'-11"	
x	148	#4	5'-9"	C
x1	12	#4	29'-6"	
x2	12	#4	7'-3"	



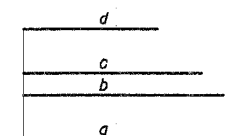
BAR a



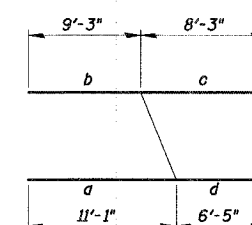
BAR d



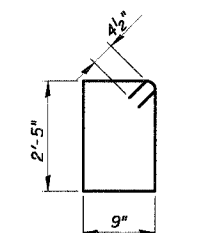
BAR h6 & h7



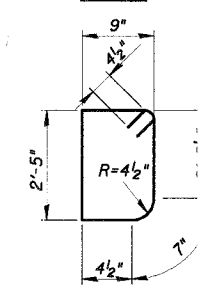
PLACING DIAGRAM h3 BARS



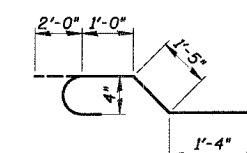
CUTTING DIAGRAM h3 BARS



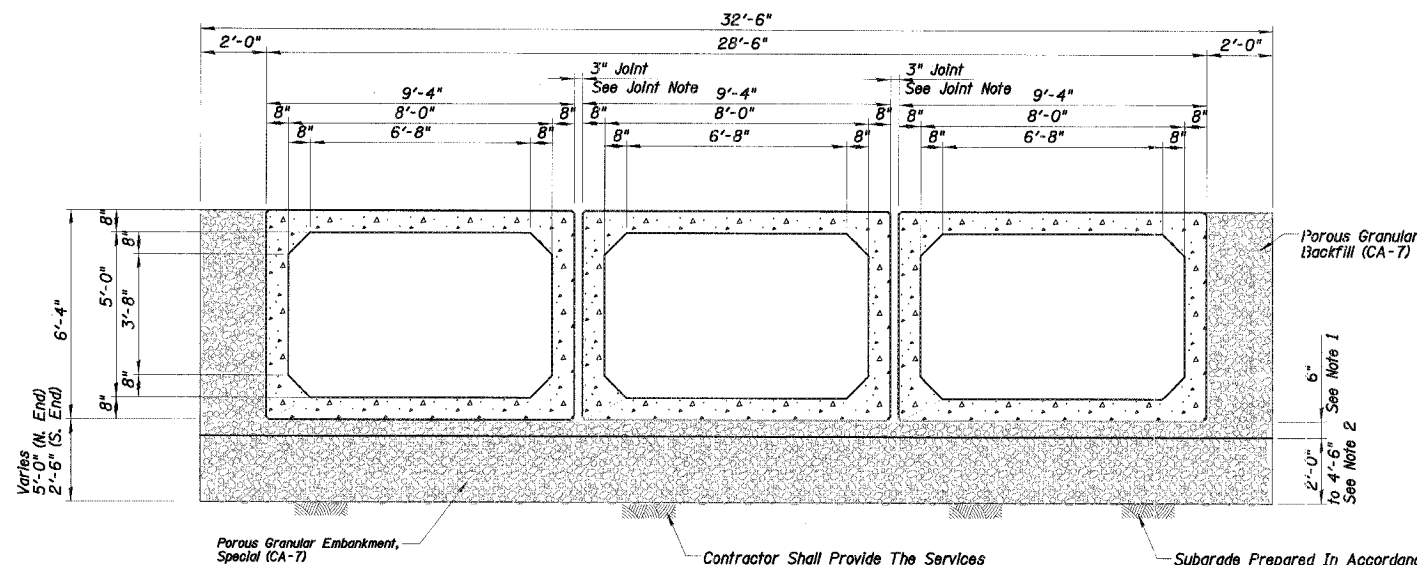
BAR s



BAR s1



BAR x



TYPICAL SECTION THRU PRECAST CULVERT

NOTES:

1. First 6" of Excavation and Porous Granular Embankment, Special Included in Cost of Precast Concrete Box Culvert and Box Culvert End Sections.
2. Remaining 2'-0" to 4'-6" Paid For As Removal and Disposal of Unsuitable Material and Porous Granular Embankment, Special.

3" JOINT NOTE

1. The joints between precast box sections shall be sealed and all voids filled with mastic joint sealer. Mastic shall be according to Section 1055. In addition, the joints shall be externally sealed on four sides using either 13 in. wide external sealing bands conforming to Article 1057.01 or 24 in. wide non-woven geotechnical fabric meeting the requirements of Article 1080.01 except the minimum weight shall be 4 oz/sq. yd. The seal or fabric shall be centered over the joint and secured to remain in place during backfilling operation.
2. A 3" space shall be left between adjacent sections. After the precast cells are in place and backfill has been placed to mid height of the precast concrete box sections on each side, the space between the cells shall be filled with Class S1 Concrete. The Class S1 Concrete shall be in accordance with Section 1020 of the IDOT Standard Specifications except the maximum size coarse aggregate shall be 3/8".
3. The cost of mastic, sealing bands and S1 concrete is incidental to Precast Concrete Box Culverts.

SECTIONS AND DETAILS

HAWTHORN LANE OVER
KRESS CREEK
F.A.U. 1389 - SECTION 99-0062-00-PV
DUPAGE COUNTY
STATION 52+00.73
STRUCTURE NO. 022-6010

CHRISTOPHER B. BURKE
ENGINEERING LTD.
9575 West Higgins Road, Suite 600
Rosemont, Illinois 60018

REVISIONS	NAME	DATE	DRAWING NUMBER
			S-3