

F.A.U. RTE.	SECTION	COUNTY	TOTAL SHEETS	SHEET NO.
1700	05-00045-02-PV	COOK/DUPAGE	103	1
COVER SHEET				
FED. ROAD DIST. NO. 7 ILLINOIS FED. AID PROJECT M-8003(544)				

**STATE OF ILLINOIS  
DEPARTMENT OF TRANSPORTATION  
DIVISION OF HIGHWAYS**

**PLANS FOR PROPOSED FEDERAL AID PROJECT  
F.A.U. ROUTE 1700 (LIVELY BOULEVARD)  
F.A.U. ROUTE 1346 (DEVON AVENUE) TO TOUHY AVENUE  
SECTION 05-00045-02-PV  
PROJECT NO. M-8003(544)  
ROADWAY RECONSTRUCTION,  
TRAFFIC SIGNAL MODERNIZATION AND LIGHTING  
COOK AND DUPAGE COUNTIES  
C-91-073-06**



**STATE OF ILLINOIS  
DEPARTMENT OF TRANSPORTATION  
DIVISION OF HIGHWAYS**

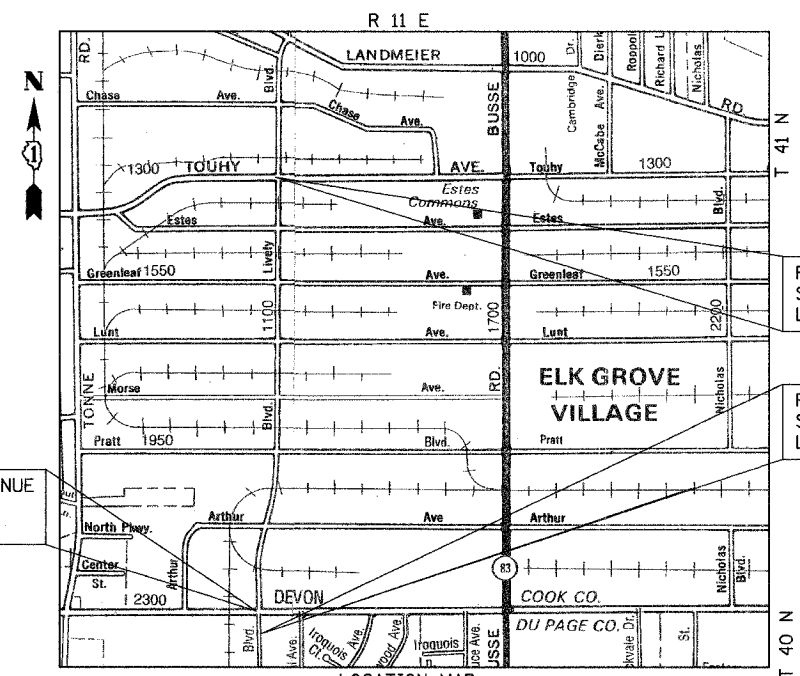
APPROVED October 12, 2006 2006  
 ELK GROVE VILLAGE, DIRECTOR OF ENGINEERING AND COMMUNITY DEVELOPMENT

PASSED October 31, 2006 2006  
 DISTRICT ONE ENGINEER OF LOCAL ROADS & STREETS

RELEASING FOR BID  
 BASED ON LIMITED  
 REVIEW November 1, 2006 2006  
 DEPUTY DIRECTOR OF HIGHWAYS, REGION ONE ENGINEER

**INDEX OF SHEETS**

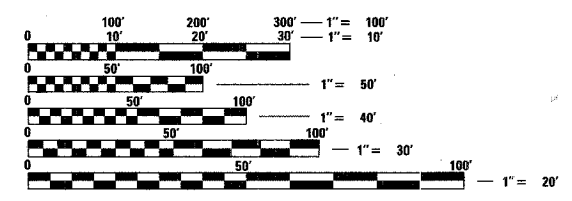
SHEET NO.	DESCRIPTION
1	COVER SHEET
2-3	GENERAL NOTES AND STATE STANDARDS
4-5	SUMMARY OF QUANTITIES
6	TYPICAL SECTIONS
7-8	SCHEDULE OF QUANTITIES
9	ALIGNMENT, TIES AND BENCHMARKS
10-15	PLAN AND PROFILE
16-17	DETOUR PLAN
18	MAINTENANCE OF TRAFFIC GENERAL NOTES AND TYPICAL SECTIONS
19-28	MAINTENANCE OF TRAFFIC AND EROSION CONTROL
29-34	DRAINAGE AND UTILITIES
35-38	INTERSECTION GRADING DETAILS
39-41	PAVEMENT MARKING AND SIGNING
42-45	LANDSCAPING PLANS AND DETAILS
46	TEMPORARY TRAFFIC SIGNAL PLAN
47	TEMPORARY TRAFFIC SIGNAL CABLE PLAN
48	TRAFFIC SIGNAL INSTALLATION PLAN
49	TRAFFIC SIGNAL CABLE PLAN
50	TRAFFIC SIGNAL SEQUENCE & SCHEDULE OF QUANTITIES
51	MAST ARM MOUNTED STREET NAME SIGNS
52-55	TRAFFIC SIGNAL DETAILS
56	STREET LIGHTING GENERAL NOTES, LEGEND & BILL OF MATERIAL
57-59	STREET LIGHTING
60	STREET LIGHTING WIRING PLAN
61	STREET LIGHTING DETAILS
62-70	CONSTRUCTION DETAILS
71-103	CROSS SECTIONS



PROJECT OMISSION AT DEVON AVENUE  
 STA. 9+67.84 TO STA. 10+32.28  
 LIVELY BOULEVARD

PROJECT ENDS  
 STA. 63+58.0  
 LIVELY BOULEVARD

PROJECT BEGINS  
 STA. 7+86.95  
 LIVELY BOULEVARD



FULL SIZE PLANS HAVE BEEN PREPARED USING STANDARD ENGINEERING SCALES. REDUCED SIZED PLANS WILL NOT CONFORM TO STANDARD SCALES. IN MAKING MEASUREMENTS ON REDUCED PLANS, THE ABOVE SCALES MAY BE USED.

J.U.L.I.E.  
 JOINT UTILITY LOCATION INFORMATION FOR EXCAVATION  
 1-800-892-0123

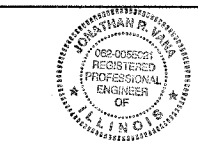
**CONTRACT NO. 83883**

THE "STANDARD SPECIFICATIONS FOR ROAD AND BRIDGE CONSTRUCTION", ADOPTED JANUARY 1, 2007 BY THE ILLINOIS DEPARTMENT OF TRANSPORTATION, SHALL GOVERN THIS WORK.

**PROJECT LENGTH:**  
 LIVELY BOULEVARD - 5,571 FT. (1.055 MILE) (GROSS)  
 5,507 FT (1.043 MILE) (NET)

**DESIGN DESIGNATIONS:**  
 LIVELY BOULEVARD - 7000(2030) • COLLECTOR TS-2 • 3.32(FD-20)

**DESIGN SPEEDS:** LIVELY BOULEVARD - 35 MPH  
**POSTED SPEEDS:** LIVELY BOULEVARD - 30 MPH



REGISTERED P.E., STATE OF ILLINOIS  
 PLANS PREPARED BY: J.R.V. 11-30-07 EXPIRES

**CIVILTECH**  
 450 E. Devon Ave, Suite 300 - Itasca, Illinois 60143  
 Tel: 630.773.3900 - Fax: 630.773.3975  
 www.civiltechinc.com

**PRINTED BY THE AUTHORITY OF THE STATE OF ILLINOIS**

FEDERAL AID ENGINEER: ABIGAIL WILGREEN 847-705-4233 SCHAUMBURG, IL  
 CONSULTANT ENGINEER: JONATHAN VANA, P.E. CIVILTECH ENGINEERING, INC.