

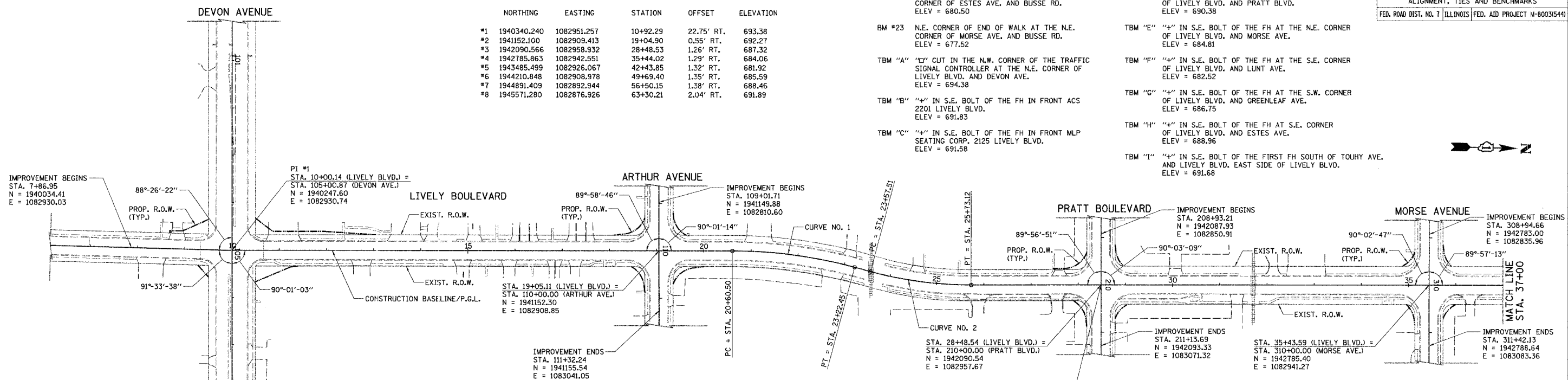
F.A.U. RTE.	SECTION	COUNTY	TOTAL SHEETS	SHEET NO.
1700	05-00045-02-PV	COOK/DUPAGE	103	9
ALIGNMENT, TIES AND BENCHMARKS				
FED. ROAD DIST. NO. 7 ILLINOIS FED. AID PROJECT M-80035441				

**CONTROL POINTS**

	NORTHING	EASTING	STATION	OFFSET	ELEVATION
*1	1940340.240	1082951.257	10+92.29	22.75' RT.	693.38
*2	1941152.100	1082909.413	19+04.90	0.55' RT.	692.27
*3	1942090.566	1082958.932	28+48.53	1.26' RT.	687.32
*4	1942785.863	1082942.551	35+44.02	1.29' RT.	684.06
*5	1943485.499	1082926.067	42+43.85	1.32' RT.	681.92
*6	1944210.848	1082908.978	49+69.40	1.35' RT.	685.59
*7	1944891.409	1082892.344	56+50.15	1.38' RT.	688.46
*8	1945571.280	1082876.926	63+30.21	2.04' RT.	691.89

**BENCHMARKS**

BM #20	N.E. CORNER OF END OF WALK AT THE N.E. CORNER OF ESTES AVE. AND BUSSE RD. ELEV = 680.50	TBM "D"	"4" IN SW BOLT OF THE FH AT THE SW CORNER OF LIVELY BLVD. AND PRATT BLVD. ELEV = 690.38
BM #23	N.E. CORNER OF END OF WALK AT THE N.E. CORNER OF MORSE AVE. AND BUSSE RD. ELEV = 677.52	TBM "E"	"4" IN S.E. BOLT OF THE FH AT THE N.E. CORNER OF LIVELY BLVD. AND MORSE AVE. ELEV = 684.81
TBM "A"	"C" CUT IN THE N.W. CORNER OF THE TRAFFIC SIGNAL CONTROLLER AT THE N.E. CORNER OF LIVELY BLVD. AND DEVON AVE. ELEV = 694.38	TBM "F"	"4" IN S.E. BOLT OF THE FH AT THE S.E. CORNER OF LIVELY BLVD. AND LUNT AVE. ELEV = 682.52
TBM "B"	"4" IN S.E. BOLT OF THE FH IN FRONT ACS 2201 LIVELY BLVD. ELEV = 691.83	TBM "G"	"4" IN S.E. BOLT OF THE FH AT THE S.W. CORNER OF LIVELY BLVD. AND GREENLEAF AVE. ELEV = 686.75
TBM "C"	"4" IN S.E. BOLT OF THE FH IN FRONT MLP SEATING CORP. 2125 LIVELY BLVD. ELEV = 691.58	TBM "H"	"4" IN S.E. BOLT OF THE FH AT S.E. CORNER OF LIVELY BLVD. AND ESTES AVE. ELEV = 688.96
		TBM "I"	"4" IN S.E. BOLT OF THE FIRST FH SOUTH OF TOUHY AVE. AND LIVELY BLVD. EAST SIDE OF LIVELY BLVD. ELEV = 691.68

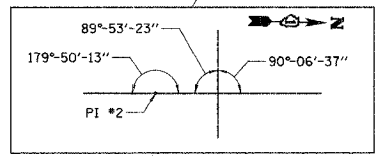
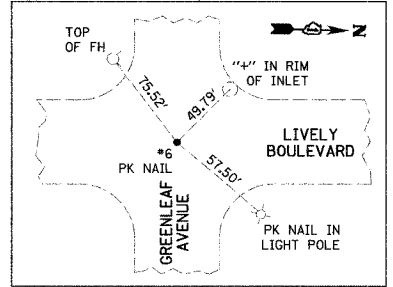
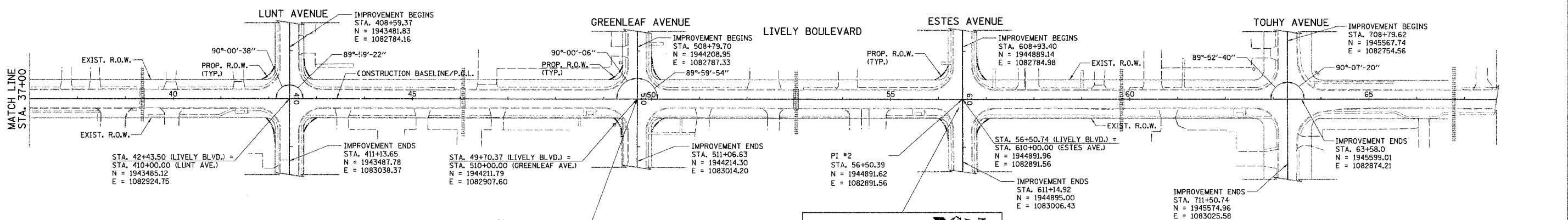
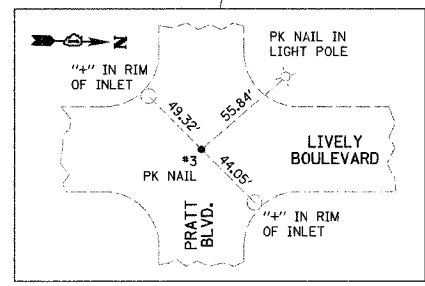


**PROP. CURVE CURVE 1**

PI STA. = 21+92.23  
N=1941439.33  
E=1082901.91  
Δ = 15°-00'-30" (RT)  
D = 5'-43'-46"  
R = 1,000.00'  
T = 131.73'  
L = 261.94'  
E = 8.64'  
P.C. STA. = 20+60.50  
N=1941307.65  
E=1082905.09  
P.T. STA. = 23+22.45  
N=1941567.36  
E=1082932.93

**PROP. CURVE CURVE 2**

PI STA. = 24+65.93  
N=1941706.80  
E=1082966.73  
Δ = 14°-58'-28" (LT)  
D = 6°-56'-42"  
R = 825.00'  
T = 108.43'  
L = 215.61'  
E = 7.09'  
P.C. STA. = 23+57.51  
N=1941601.43  
E=1082941.19  
P.T. STA. = 25+73.12  
N=1941815.20  
E=1082964.17



ILLINOIS DEPARTMENT OF TRANSPORTATION

**ALIGNMENT, TIES AND BENCHMARKS**

LIVELY BOULEVARD  
STA. 7+86.95 TO STA. 63+58.0

SCALE IN FEET

DATE: 10/18/06  
DESIGNED BY: DJK  
CHECKED BY: JRV