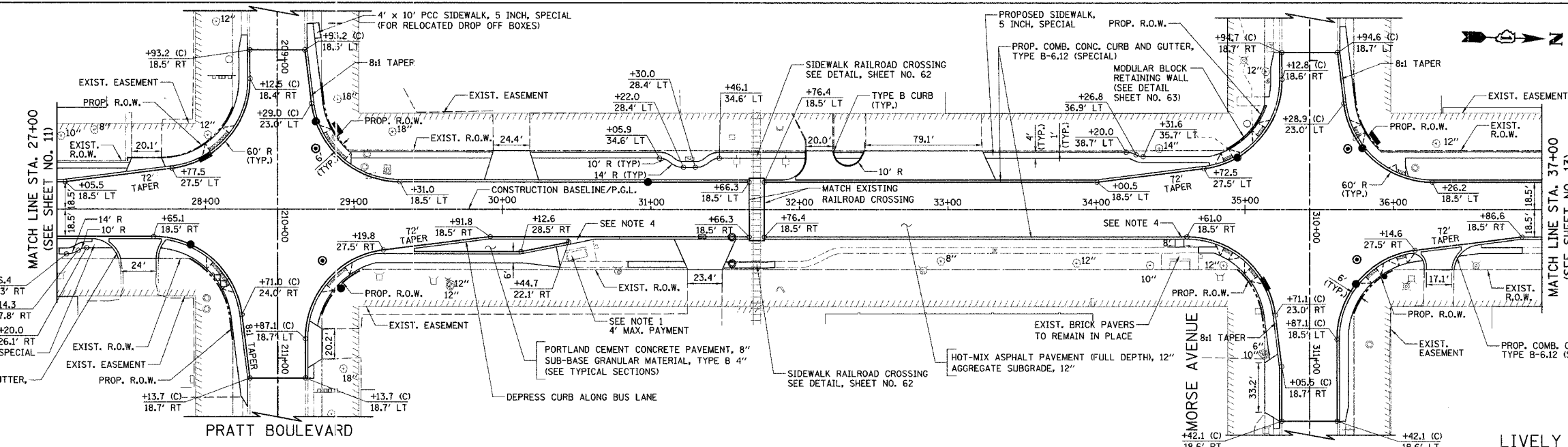
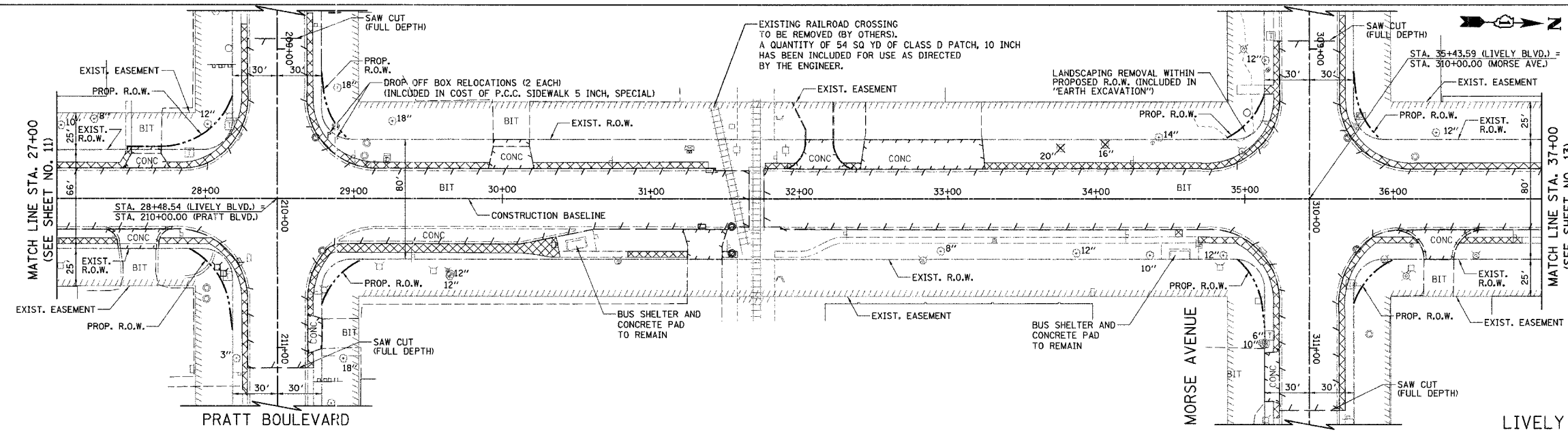
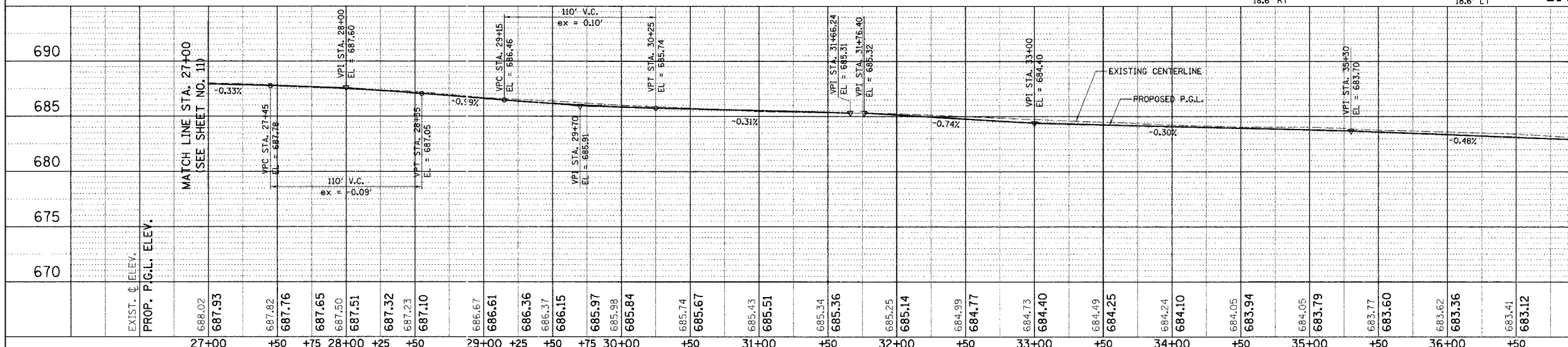


F.A.U. RTE.	SECTION	COUNTY	TOTAL SHEETS	SHEET NO.
1700	05-00045-02-PV	COOK/DUPAGE	103	12
STA. 27+00 TO STA. 37+00				
FED. ROAD DIST. NO. 7 ILLINOIS FED. AID PROJECT M-80036441				



- NOTES**
1. REMOVE EXISTING BRICK PAVERS AND PLACE TEMPORARY AGGREGATE TO STABILIZE REMAINING BRICK PAVERS. REPLACE PAVERS UPON COMPLETION OF CURB AND GUTTER. THIS WORK SHALL BE PAID FOR AS "REMOVE AND REINSTALL BRICK PAVEMENT". THE MAXIMUM PAYMENT SHALL BE TO THE DIMENSIONS SHOWN ON THE PLANS.
  2. TRANSITION CROSS SLOPES FROM 2% TO MATCH RAILROAD CROSSING, STARTING AT THE FOLLOWING LOCATIONS:  
SOUTH OF TRACKS: STA. 30+99, LT  
NORTH OF TRACKS: STA. 32+52, LT  
STA. 31+29, RT  
STA. 32+19, RT
  3. STATION OFFSET CALL-OFFS NOTED WITH (C) ARE DEFINED BY THE CROSS STREET ALIGNMENT.
  4. VARY CURB HEIGHT FROM 4" TO 9", AS DIRECTED BY THE ENGINEER. THIS WORK SHALL BE INCLUDED IN THE COST OF "COMB. CONC. CURB AND GUTTER, TYPE B-6.12 (SPECIAL)".
  5. ALL PROPOSED SIDEWALK SHALL BE 5 INCH THICK EXCEPT WHERE NOTED.



ILLINOIS DEPARTMENT OF TRANSPORTATION

**PROPOSED PLAN AND PROFILE**

LIVELY BOULEVARD  
STA. 27+00 TO STA. 37+00

HORIZ.: 40  
VERT.: 5

SCALE IN FEET

DATE: 12/22/06  
DESIGNED BY: DJK  
CHECKED BY: JRV