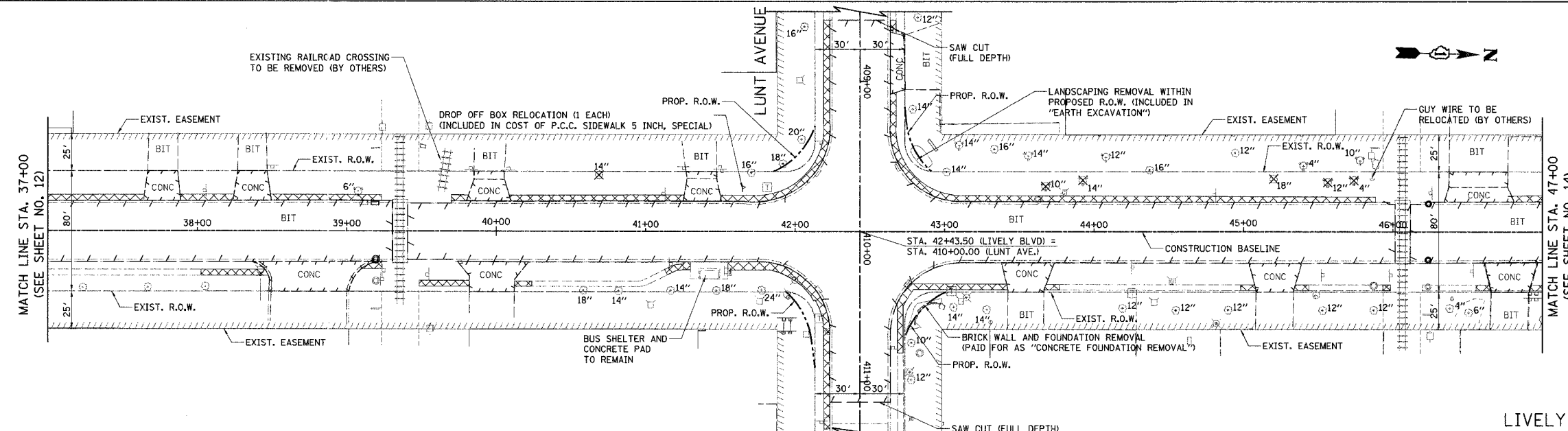
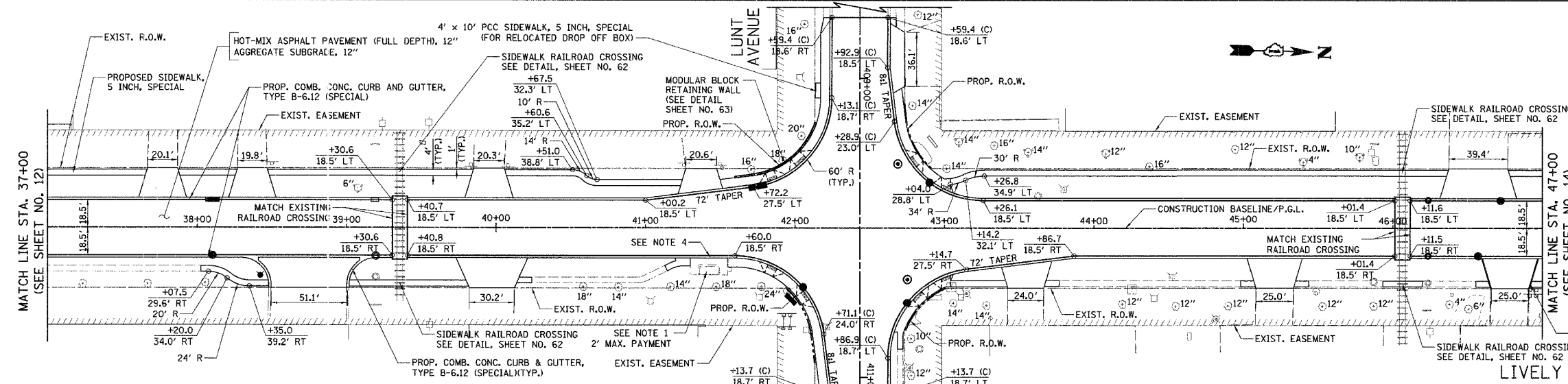


F.A.U. RTE.	SECTION	COUNTY	TOTAL SHEETS	SHEET NO.
1700	05-00045-02-PV	COOK/DUPAGE	103	13
STA. 37+00		TO STA. 47+00		
FED. ROAD DIST. NO. 7		ILLINOIS	FED. AID PROJECT M-8003544	

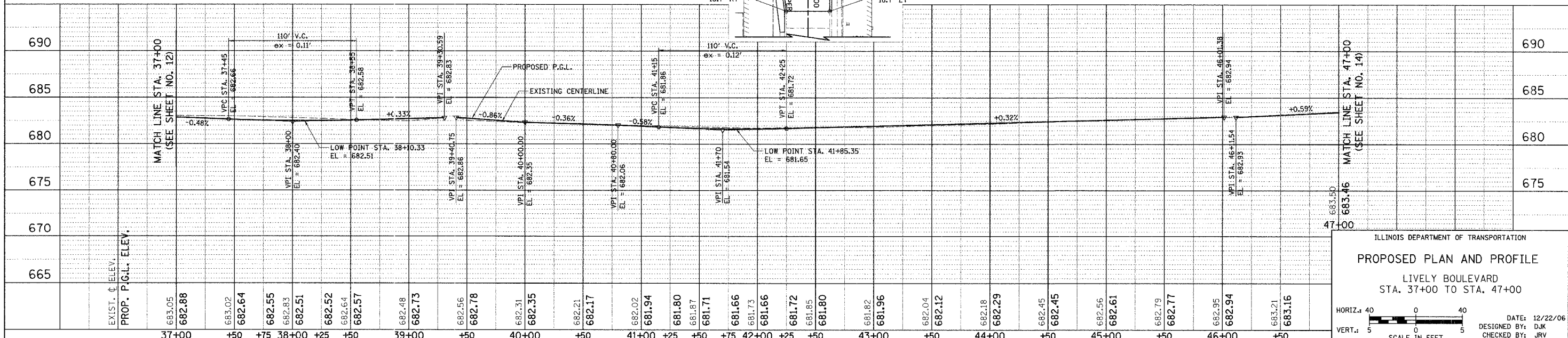


LIVELY BOULEVARD (EXISTING)



LIVELY BOULEVARD (PROPOSED)

- NOTES
- REMOVE EXISTING BRICK PAVERS AND PLACE TEMPORARY AGGREGATE TO STABILIZE REMAINING BRICK PAVERS. REPLACE PAVERS UPON COMPLETION OF CURB AND GUTTER. THIS WORK SHALL BE PAID FOR AS "REMOVE AND REINSTALL BRICK PAVEMENT". THE MAXIMUM PAYMENT SHALL BE TO THE DIMENSIONS SHOWN ON THE PLANS.
 - TRANSITION CROSS SLOPES FROM 2% TO MATCH RAILROAD CROSSING, STARTING AT THE FOLLOWING LOCATIONS:
 SOUTH OF TRACKS
 STA. 38+56, LT STA. 38+86, RT
 STA. 45+31, LT STA. 45+57, RT
 NORTH OF TRACKS
 STA. 40+18, LT STA. 40+02, RT
 STA. 46+72, LT STA. 46+58, RT
 - STATION OFFSET CALL-OFFS NOTED WITH (C) ARE DEFINED BY THE CROSS STREET ALIGNMENT.
 - VARY CURB HEIGHT FROM 4" TO 9", AS DIRECTED BY THE ENGINEER. THIS WORK SHALL BE INCLUDED IN THE COST OF "COMB. CONC. CURB AND GUTTER, TYPE B-6.12 (SPECIAL)".



ILLINOIS DEPARTMENT OF TRANSPORTATION

PROPOSED PLAN AND PROFILE

LIVELY BOULEVARD
 STA. 37+00 TO STA. 47+00

HORIZ.: 40
 VERT.: 5

SCALE IN FEET

DATE: 12/22/06
 DESIGNED BY: DJK
 CHECKED BY: JRV