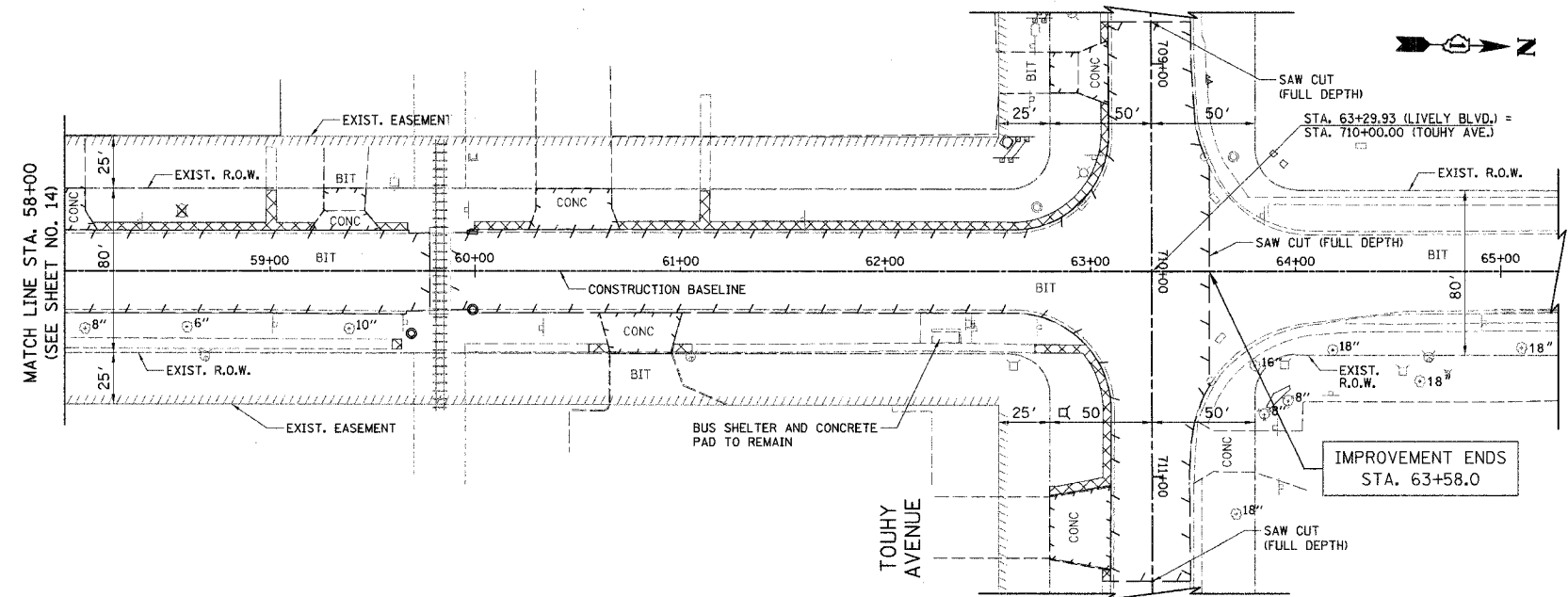
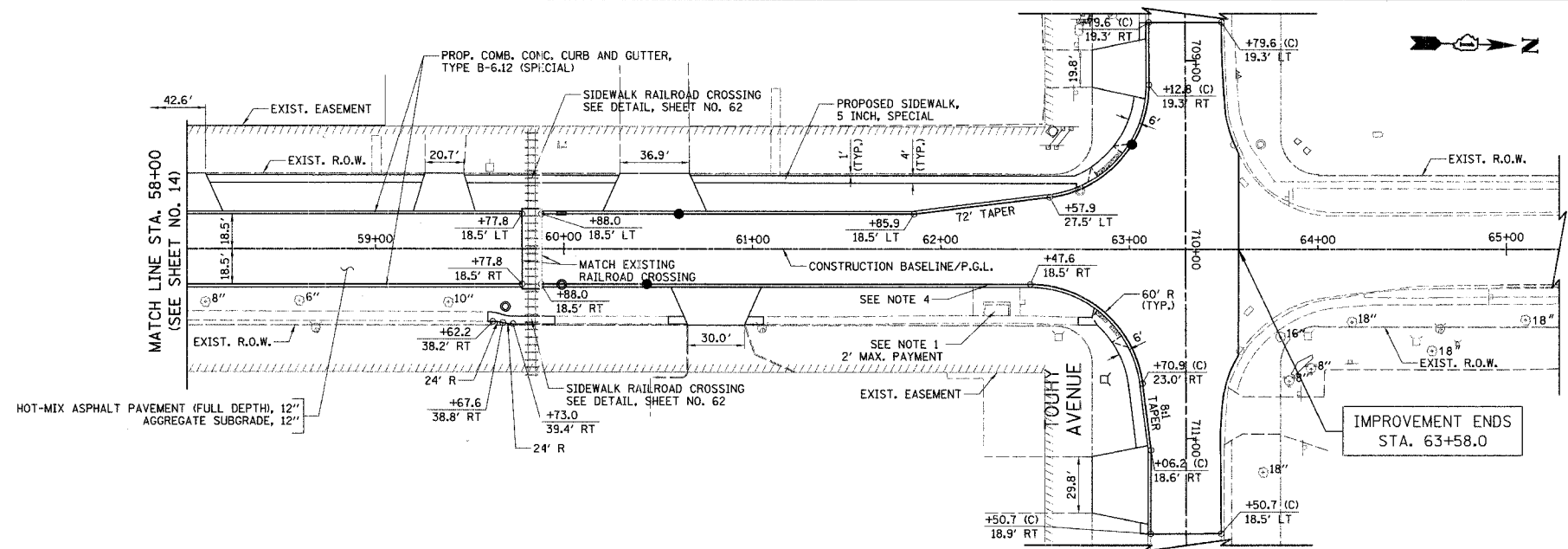


F.A.U. RTE.	SECTION	COUNTY	TOTAL SHEETS	SHEET NO.
1700	05-00045-02-PV	COOK/DUPAGE	103	15
STA. 58+00		TO STA. 63+58.0		
FED. ROAD DIST. NO. 7		ILLINOIS		
		FED. AID PROJECT M-80036440		

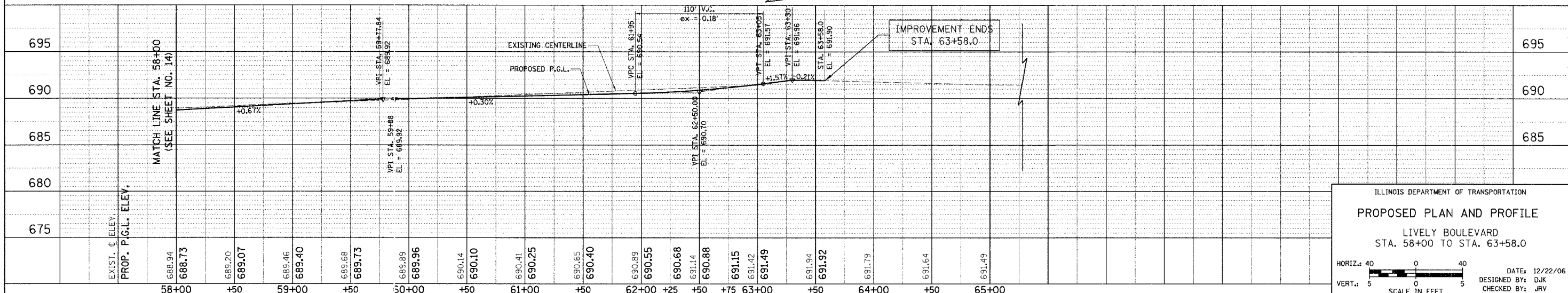


LIVELY BOULEVARD (EXISTING)



LIVELY BOULEVARD (PROPOSED)

- NOTES**
- REMOVE EXISTING BRICK PAVERS AND PLACE TEMPORARY AGGREGATE TO STABILIZE REMAINING BRICK PAVERS. REPLACE PAVERS UPON COMPLETION OF CURB AND GUTTER. THIS WORK SHALL BE PAID FOR AS "REMOVE AND REINSTALL BRICK PAVEMENT". THE MAXIMUM PAYMENT SHALL BE TO THE DIMENSIONS SHOWN ON THE PLANS.
 - TRANSITION CROSS SLOPES FROM 2% TO MATCH RAILROAD CROSSING, STARTING AT THE FOLLOWING LOCATIONS:
SOUTH OF TRACKS: STA. 59+07, LT STA. 59+26, RT
NORTH OF TRACKS: STA. 60+61, LT STA. 60+44, RT
 - STATION OFFSET CALL-OFFS NOTED WITH (C) ARE DEFINED BY THE CROSS STREET ALIGNMENT.
 - VARY CURB HEIGHT FROM 4" TO 9", AS DIRECTED BY THE ENGINEER. THIS WORK SHALL BE INCLUDED IN THE COST OF "COMB. CONC. CURB AND GUTTER, TYPE B-6.12 (SPECIAL)".



ILLINOIS DEPARTMENT OF TRANSPORTATION

PROPOSED PLAN AND PROFILE

LIVELY BOULEVARD
STA. 58+00 TO STA. 63+58.0

HORIZ. SCALE: 1" = 40'
VERT. SCALE: 1" = 5'

DATE: 12/22/06
DESIGNED BY: DJK
CHECKED BY: JRJ