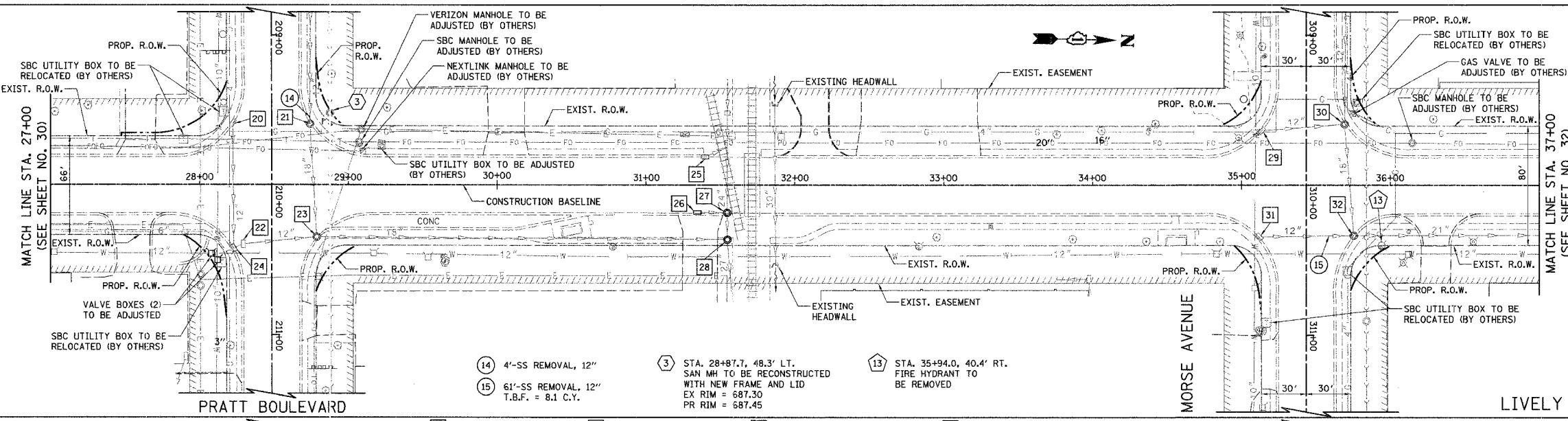


F.A.U. RTE.	SECTION	COUNTY	TOTAL SHEETS	SHEET NO.
1700	05-00045-02-PV	COOK/DUPAGE	103	31
STA. 27+00		TO STA. 37+00		
FED. ROAD DIST. NO. 7 ILLINOIS FED. AID PROJECT W-80031544				

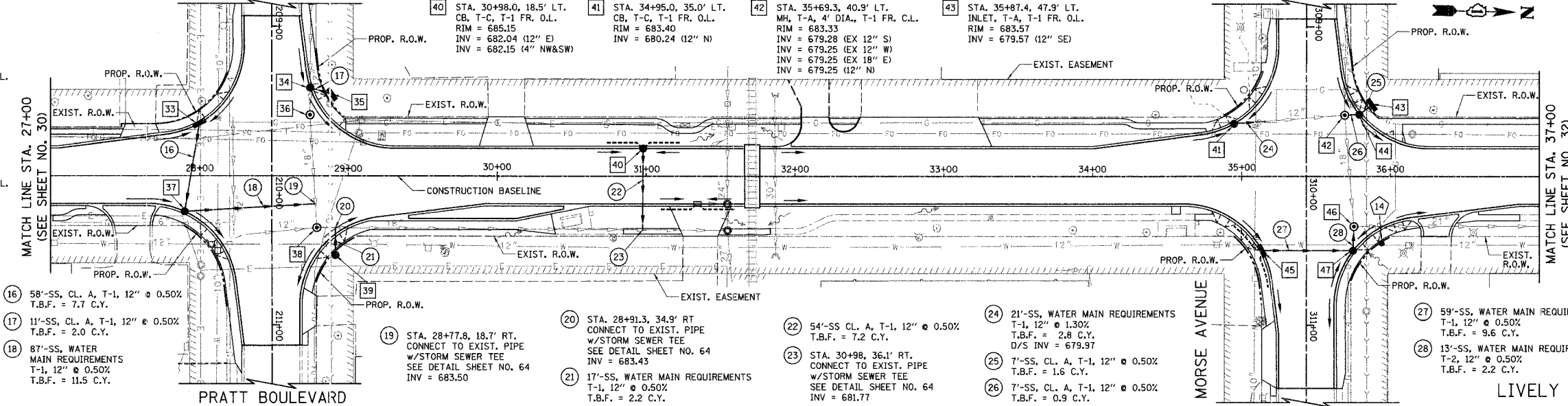
- 20 STA. 28+22.5, 41.5' LT. INLET TO BE REMOVED ABANDON EXISTING STORM SEWER
- 21 STA. 28+74.3, 40.8' LT. MH TO BE REMOVED
- 22 STA. 28+29.5, 39.7' RT. INLET TO BE REMOVED ABANDON EXISTING STORM SEWER
- 23 STA. 28+78.8, 34.8' RT. MH TO BE REMOVED
- 24 STA. 28+23.1, 42.3' RT. INLET TO BE REMOVED ABANDON EXISTING STORM SEWER
- 25 STA. 31+39.7, 18.9' LT. INLET TO BE REMOVED ABANDON EXISTING STORM SEWER
- 26 STA. 31+34.4, 18.3' RT. INLET TO BE ADJUSTED w/NEW T-1 FR. O.L. EX RIM = 684.76 PR RIM = 685.05 INV = 682.86 (4" NE&SE) INV = 682.86 (EX. 12" N)

- 27 STA. 31+54.5, 18.6' RT. MH TO BE ADJUSTED w/NEW T-1 FR. O.L. EX RIM = 684.91 PR RIM = 685.14
- 28 STA. 31+54.7, 36.4' RT. MH TO BE ADJUSTED w/NEW T-1 FR. C.L. EX RIM = 685.19 PR RIM = 685.25
- 29 STA. 35+13.9, 36.5' LT. REMOVING INLET TO MAINTAIN FLOW
- 30 STA. 35+69.3, 40.9' LT. MH TO BE REMOVED
- 31 STA. 35+12.2, 34.6' RT. INLET TO BE REMOVED ABANDON EXISTING STORM SEWER
- 32 STA. 35+75.4, 33.8' RT. MH TO BE REMOVED



- 33 STA. 28+00, 35.0' LT. INLET, T-A, T-1 FR. O.L. RIM = 687.16 INV = 684.22 (12" E)
- 34 STA. 28+74.3, 58.8' LT. CB, T-A, 4' DIA., T-1 FR. O.L. RIM = 686.91 INV = 683.24 (EX 12" E&W) INV = 683.50 (12" N)
- 35 STA. 28+89.0, 54.4' LT. INLET, T-A, T-1 FR. O.L. RIM = 687.20 INV = 683.54 (12" S)
- 36 STA. 28+74.3, 40.8' LT. MH, T-A, 4' DIA., T-1 FR. C.L. RIM = 687.00 INV = 682.98 (EX 18" E) INV = 683.17 (EX 12" W)
- 37 STA. 27+90.0, 23.9' RT. CB, T-A, 4' DIA., T-1 FR. O.L. RIM = 687.13 INV = 683.94 (12" N&W)
- 38 STA. 28+78.8, 34.8' RT. MH, T-A, 4' DIA., T-1 FR. C.L. RIM = 686.43 INV = 682.61 (EX 18" W&N)
- 39 STA. 28+91.3, 53.2' RT. CB, T-C, T-1 FR. O.L. RIM = 686.38 INV = 683.52 (12" W)

- 40 STA. 30+98.0, 18.5' LT. CB, T-C, T-1 FR. O.L. RIM = 685.15 INV = 682.04 (12" E) INV = 682.15 (4" NW&SW)
- 41 STA. 34+95.0, 35.0' LT. CB, T-C, T-1 FR. O.L. RIM = 683.40 INV = 680.24 (12" N)
- 42 STA. 35+69.3, 40.9' LT. MH, T-A, 4' DIA., T-1 FR. C.L. RIM = 683.33 INV = 679.28 (EX 12" S) INV = 679.25 (EX 18" W) INV = 679.25 (12" N)
- 43 STA. 35+87.4, 47.9' LT. INLET, T-A, T-1 FR. O.L. RIM = 683.57 INV = 679.57 (12" SE)
- 44 STA. 35+79.1, 41.3' LT. CB T-A, 4' DIA., T-1 FR. O.L. RIM = 683.25 INV = 679.29 (12" S) INV = 679.54 (12" NW)
- 45 STA. 35+13.8, 50.0' RT. INLET, T-A, T-1 FR. O.L. RIM = 683.10 INV = 678.71 (12" N) INV = 679.74 (4" NE&SW)
- 46 STA. 35+75.4, 33.8' RT. MH, T-A, 5' DIA., T-1 FR. C.L. RIM = 682.90 INV = 678.43 (EX 18" W) INV = 678.33 (EX 21" N) INV = 678.36 (12" E)
- 47 STA. 35+74.8, 50.0' RT. CB, T-A, 4' DIA., T-1 FR. O.L. RIM = 682.69 INV = 678.42 (12" S&W)
- 48 STA. 35+94.0, 45.1' RT. FH w/AUX VALVE 2" - WATER MAIN, 6" T.B.F. = 1.3 C.Y.



EXIST. P.G.L. ELEV.	PROP. P.G.L. ELEV.	27+00	+50	28+00	+50	29+00	+50	30+00	+50	31+00	+50	32+00	+50	33+00	+50	34+00	+50	35+00	+50	36+00	+50																			
690		688.02	687.93	687.82	687.76	687.50	687.51	687.23	687.10	686.67	686.61	686.37	686.15	685.98	685.84	685.74	685.67	685.43	685.51	685.34	685.36	685.25	685.14	684.99	684.77	684.73	684.40	684.49	684.25	684.10	684.05	683.94	684.05	683.79	683.77	683.60	683.62	683.36	683.41	683.12

ILLINOIS DEPARTMENT OF TRANSPORTATION
DRAINAGE AND UTILITIES
 LIVELY BOULEVARD
 STA. 27+00 TO STA. 37+00

HORIZ.: 40
 VERT.: 5

DATE: 12/22/06
 DESIGNED BY: KRK
 CHECKED BY: JRV