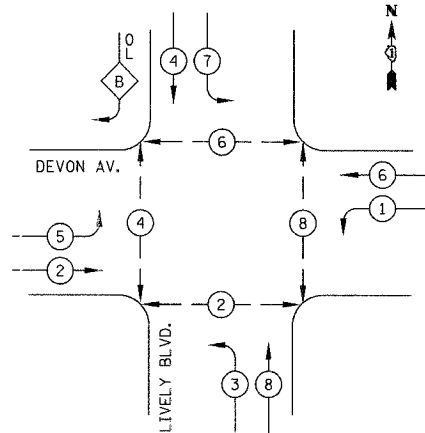


F.A.U. RTE.	SECTION	COUNTY	TOTAL SHEETS	SHEET NO.
1700	05-00045-02-PV	COOK/DUPAGE	103	49
CABLE PLAN AND SEQUENCES				
FED. ROAD DIST. NO. 7		ILLINOIS		FED. AID PROJECT M-80035441

CABLE PLAN LEGEND

- | | | |
|--|--|---|
| | | |
| | | 8" (200mm) TRAFFIC SIGNAL SECTION |
| | | 12" (300mm) TRAFFIC SIGNAL SECTION |
| | | 12" (300mm) PEDESTRIAN SIGNAL SECTION |
| | | 12" (300mm) PEDESTRIAN SIGNAL SECTION |
| | | CONTROLLER CABINET |
| | | SERVICE INSTALLATION |
| | | TELEPHONE CONNECTION |
| | | MAGNETIC DETECTOR |
| | | EMERGENCY VEHICLE LIGHT DETECTOR |
| | | CONFIRMATION BEACON |
| | | PUSHBUTTON DETECTOR |
| | | VEHICLE DETECTOR, INDUCTION LOOP |
| | | DENOTES NUMBER OF CONDUCTORS, ALL CABLE NO. 14 EXCEPT AS INDICATED. ALL LOOP DETECTOR CABLE TO BE SHIELDED. |
| | | MICROWAVE VEHICLE SENSOR |
| | | SIGNAL FACE WITH BACKPLATE, "P" INDICATES PROGRAMMED HEAD |
| | | RAILROAD CONTROL CABINET |
| | | ILLUMINATED SIGN "NO LEFT TURN" |
| | | ILLUMINATED SIGN "NO RIGHT TURN" |
| | | GROUND ROD AT HANDHOLE (H), DOUBLE HANDHOLE (H), OR CONTROLLER (C). |
| | | GROUND ROD AT POST (P), OR MAST ARM POLE (MA). |
| | | GROUND ROD AT ELECTRIC SERVICE INSTALLATION |
| | | GROUND CABLE IN CONDUIT NO. 6 SOLID COPPER (GREEN) |
| | | FIBER OPTIC CABLE IN CONDUIT NO. 62.5/125 2-MM12F SM12F |

PROPOSED CONTROLLER SEQUENCE



LEGEND

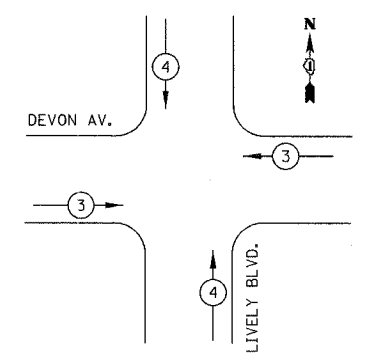
- | | |
|--|-----------------------------------|
| | DUAL ENTRY PHASE |
| | SINGLE ENTRY PHASE |
| | OVERLAP |
| | PEDESTRIAN PHASE |
| | NUMBER REFERS TO ASSOCIATED PHASE |

PHASE DESIGNATION DIAGRAM

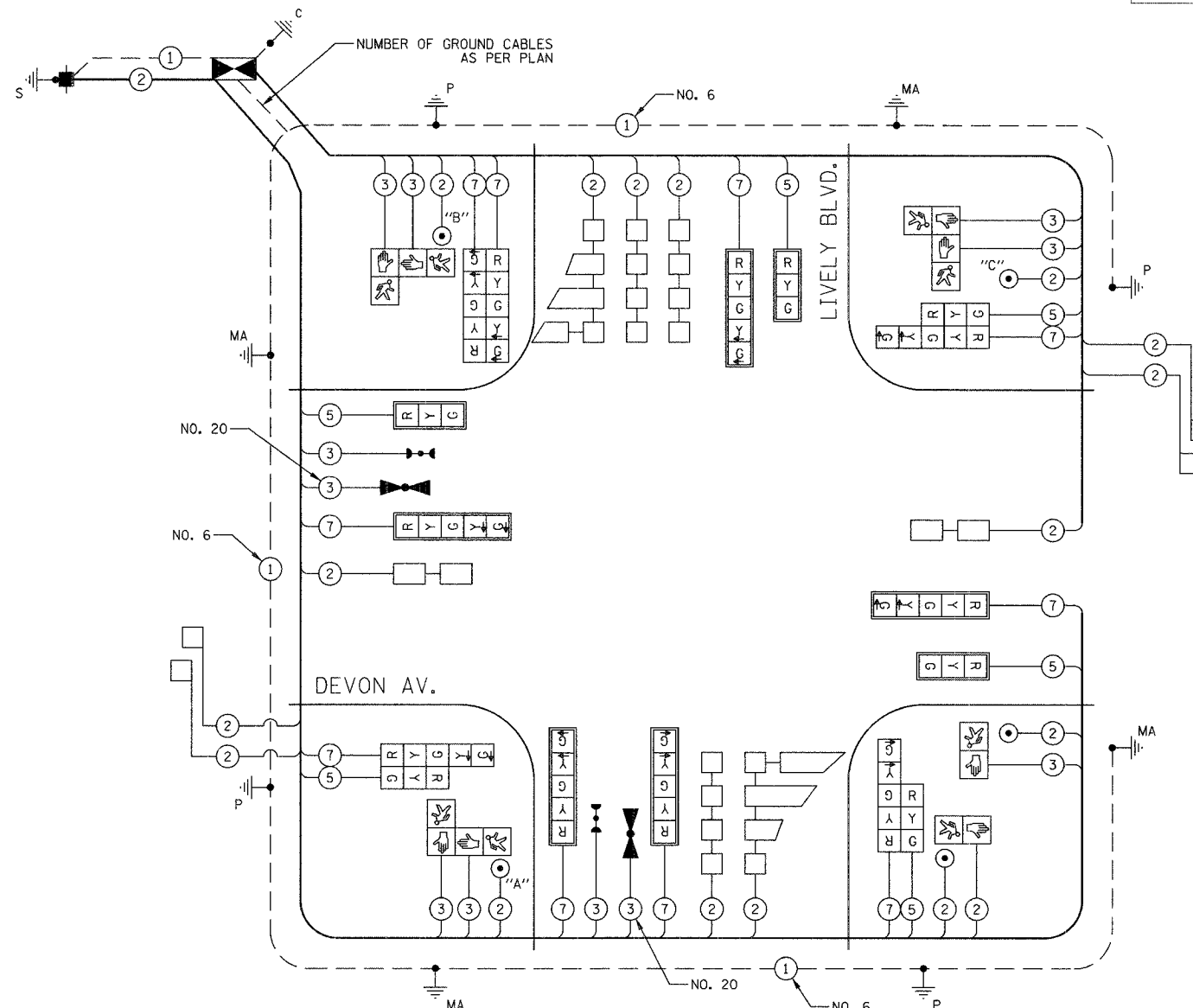
RIGHT TURN OVERLAP PHASE DESIGNATION

OVERLAP LETTER	PERMISSIVE PHASE	PROTECTED PHASE
B	= 4	+ 5

PROPOSED EMERGENCY VEHICLE PREEMPTION SEQUENCE



PROPOSED EMERGENCY VEHICLE PREEMPTORS		
EMERGENCY VEHICLE PREEMPTOR	3	4
MOVEMENT		



CABLE PLAN NOT TO SCALE

NOTE:
 PUSHBUTTON A SHALL PLACE A CALL TO PHASES 2 & 4
 PUSHBUTTON B SHALL PLACE A CALL TO PHASES 4 & 6
 PUSHBUTTON C SHALL PLACE A CALL TO PHASES 6 & 8

NOTE:
 THE TRAFFIC SIGNAL CONTROLLER EQUIPMENT FOR THIS PROJECT SHALL BE "ECONOLITE" TO MATCH THE POTENTIAL FUTURE SYSTEM.

I.D.O.T. TRAFFIC SIGNAL INSTALLATION ELECTRICAL SERVICE REQUIREMENTS					TOTAL WATTAGE
TYPE	NO. LAMPS	WATTAGE INCAND.	LED	% OPERATION	
SIGNAL (RED)	16		17	0.50	136
(YELLOW)	16		25	0.25	100
(GREEN)	16		15	0.25	60
ARROW	20		12	0.10	24
PED. SIGNAL	8		25	1.00	200
CONTROLLER	1		100	1.00	100
FLASHER				0.50	
TOTAL =					620

ENERGY COSTS TO: VILLAGE OF ELK GROVE
 901 WELLINGTON AVENUE
 ELK GROVE VILLAGE, IL 60007

ENERGY SUPPLY: CONTACT: JUDITH SCHOMER
 PHONE: (630) 691-4407
 COMPANY: COM ED

FOUNDATION (DEPTH)	FT. (m)	CABLE SLACK	FT. (m)	VERTICAL	FT. (m)
TYPE A - POST	4 (1.2)	HANDHOLE	6.5 (2.0)	ALL FOUNDATIONS	3.5 (2.0)
D- CONTROLLER	4 (1.2)	DOUBLE HANDHOLE	13 (4.0)	MAST ARM (L) POLE	20'+L-2'
F- M. ARM POLE		SIGNAL POST	2 (1.0)		6m+L-0.6m
24" (600mm)	10 (3.0)	CONTROLLER CAB.	1 (0.5)	BRACKET MOUNTED	13 (4.0)
30" (750mm)	15 (4.6)	FIBER OPTIC	13 (4.0)	PED. PUSHBUTTON	4 (1.2)
36" (900mm)	15 (4.6)	ELECTRIC SERVICE	1 (0.5)	ELECTRIC SERVICE	13.5 (4.1)
		GROUND CABLE	1 (0.5)	SERVICE TO GROUND	13.5 (4.1)
				POST MOUNTED	6 (1.8)

ILLINOIS DEPARTMENT OF TRANSPORTATION

CABLE PLAN AND TRAFFIC SIGNAL SEQUENCES
 DEVON AVENUE & LIVELY BOULEVARD

DATE: 12/22/06
 DESIGNED BY: BRD
 CHECKED BY: JUE

NOT TO SCALE