

F.A.U. RTE.	SECTION	COUNTY	TOTAL SHEETS	SHEET NO.
1275	06-00145-00-RS	COOK	23	1

CONTRACT: 83891

STATE OF ILLINOIS DEPARTMENT OF TRANSPORTATION DIVISION OF HIGHWAYS

PROPOSED LOCAL AGENCY IMPROVEMENT FEDERAL-AID URBAN PROJECT

**F.A.U. ROUTE 1275 (WALTERS AVENUE)
LORENZ DRIVE TO ILLINOIS ROUTE 43 (WAUKEGAN ROAD) FAP ROUTE 348
SECTION 06-00145-00-RS
PROJECT NO. M-8003(714)
VILLAGE OF NORTHBROOK
COOK COUNTY
C-91-070-07**

INDEX OF SHEETS

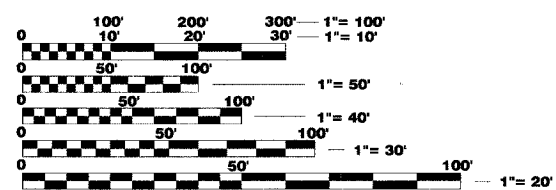
- 1 COVER SHEET
- 2 GENERAL NOTES, DETAIL AND SUMMARY OF QUANTITIES
- 3 TYPICAL SECTIONS
- 4-13 ROADWAY PLAN SHEETS
- 14 PAVEMENT MARKING PLAN SHEETS
- 15 DRIVEWAY DETAILS DISTANCE BETWEEN ROW AND CURB OR EDGE < 4.5M (15')
- 16 DRIVEWAY DETAILS DISTANCE BETWEEN ROW AND FACE OF CURB OR EDGE < 4.5m (15')
- 17 DETAILS FOR FRAMES AND LIDS ADJUSTMENT WITH MILLING
- 18 CURB OR CURB AND GUTTER REMOVAL AND REPLACEMENT
- 19 BUTT JOINT AND BITUMINOUS TAPER DETAILS
- 20 TRAFFIC CONTROL AND PROTECTION FOR SIDE ROADS, INTERSECTIONS AND DRIVEWAYS
- 21 DISTRICT ONE TYPICAL PAVEMENT MARKINGS
- 22 PAVEMENT MARKING LETTERS AND SYMBOLS FOR TRAFFIC STAGING
- 23 DETECTOR LOOP INSTALLATION DETAIL FOR ROADWAY RESURFACING

HIGHWAY STANDARDS

- 000001-04 STANDARD SYMBOLS, ABBREVIATIONS AND PATTERNS
- 424001-04 CURB RAMPS FOR SIDEWALKS
- 442201-02 CLASS C AND D PATCHES
- 604076-03 FRAME AND GRATE TYPE 21
- 606001-03 CONCRETE CURB TYPE B AND COMBINATION CONCRETE CURB AND GUTTER
- 701501-03 URBAN LANE CLOSURE, 2L, 2W, UNDIVIDED
- 702001-06 TRAFFIC CONTROL DEVICES
- 780001-01 TYPICAL PAVEMENT MARKINGS
- 781001-02 TYPICAL APPLICATION RAISED REFLECTIVE PAVEMENT MARKERS
- 888001 DETECTOR LOOP INSTALLATIONS

TRAFFIC DATA:
ADT 3,600 VPD (2006)

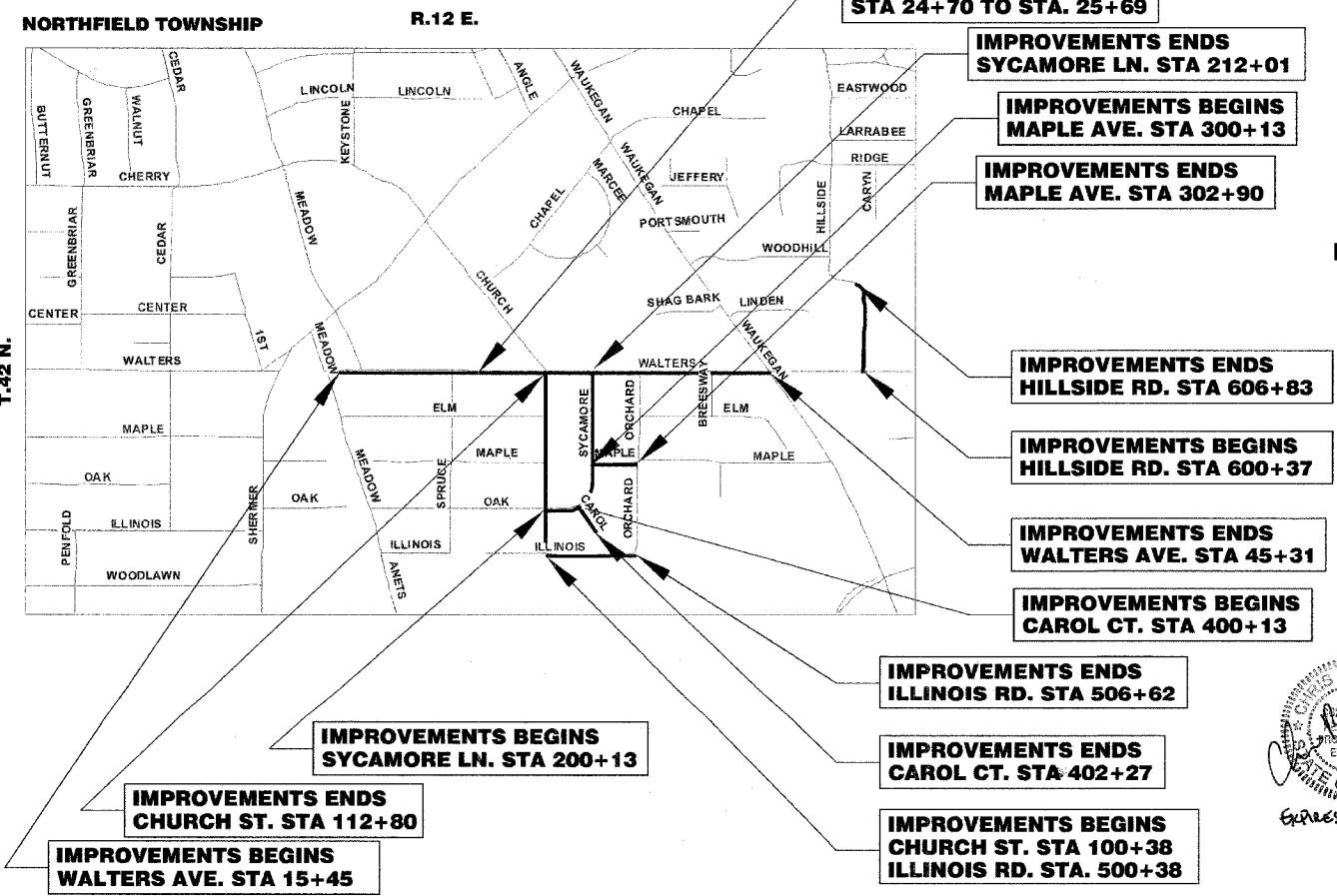
**POSTED SPEED LIMIT - 25 MPH
DESIGN SPEED LIMIT - 25 MPH**



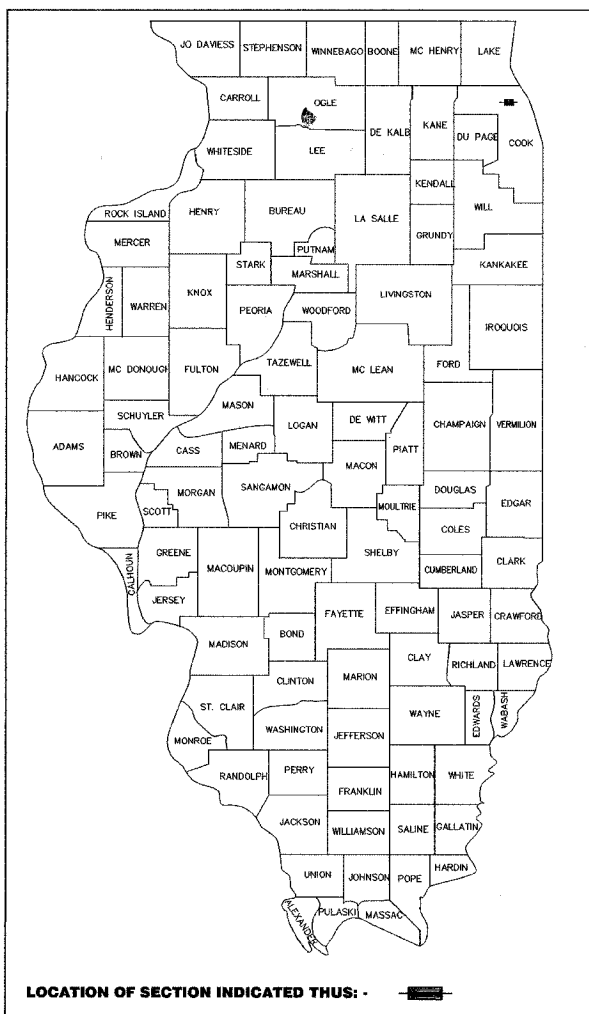
FULL SIZE PLANS HAVE BEEN PREPARED USING STANDARD ENGINEERING SCALES. REDUCED SIZED PLANS WILL NOT CONFORM TO STANDARD SCALES. IN MAKING MEASUREMENTS ON REDUCED PLANS, THE ABOVE SCALES MAY BE USED.

**J.U.L.I.E.
JOINT UTILITY LOCATION INFORMATION FOR EXCAVATION
1-800-892-0123**

CONTRACT NO. 83891



**GROSS LENGTH OF PROJECT: 7,177 L.F. = 1.359 MILE
NET LENGTH OF PROJECT: 7,078 L.F. = 1.341 MILE**



**STATE OF ILLINOIS
DEPARTMENT OF TRANSPORTATION
DIVISION OF HIGHWAYS**

APPROVED _____ DATE December 1, 2006

LOCAL AGENCY, VILLAGE ENGINEER

PASSED _____ DATE December 28, 2006

DISTRICT ENGINEER OF LOCAL ROADS & STREETS

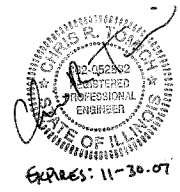
RELEASING FOR BID
BASED ON LIMITED
REVIEW

DATE December 29, 2006

DEPUTY DIRECTOR OF HIGHWAYS, REGION 1 ENGINEER

**PRINTED BY THE AUTHORITY
OF THE STATE OF ILLINOIS**

FA DESIGN ENGINEER: ABIGAIL WILGREEN 847-705-4233



Expires: 11-30-07