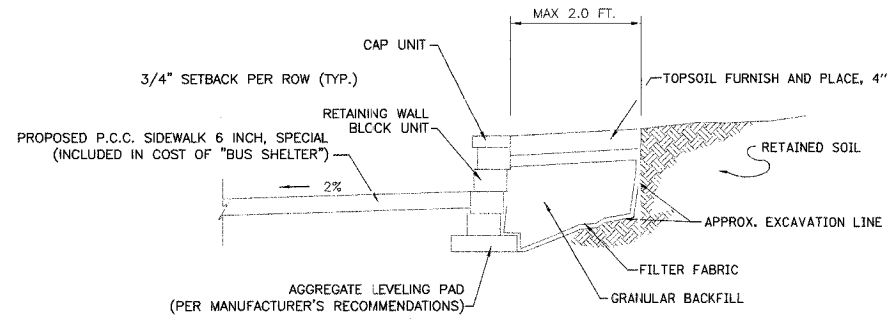


F.A.U. RTE.	SECTION	COUNTY	TOTAL SHEETS	SHEET NO.
	06-00051-00-MS	COOK/DUPAGE	14	14
DETAILS				
FED. ROAD DIST. NO. 7 ILLINOIS FED. AID PROJECT M-80036581				



MODULAR BLOCK RETAINING WALL

NOT TO SCALE

1. PRIOR TO CONSTRUCTION OF THE RETAINING WALL, THE CONTRACTOR SHALL SUBMIT SHCP DRAWINGS.
2. ALL ITEMS SHOWN ABOVE ASSOCIATED WITH THE RETAINING WALL EXCEPT PROPOSED TOPSOIL SHALL BE INCLUDED IN THE PAY ITEM "MODULAR BLOCK RETAINING WALL".

ILLINOIS DEPARTMENT OF TRANSPORTATION

DETAILS

DATE: 12/1/06
DESIGNED BY: DJK
CHECKED BY: JRV