

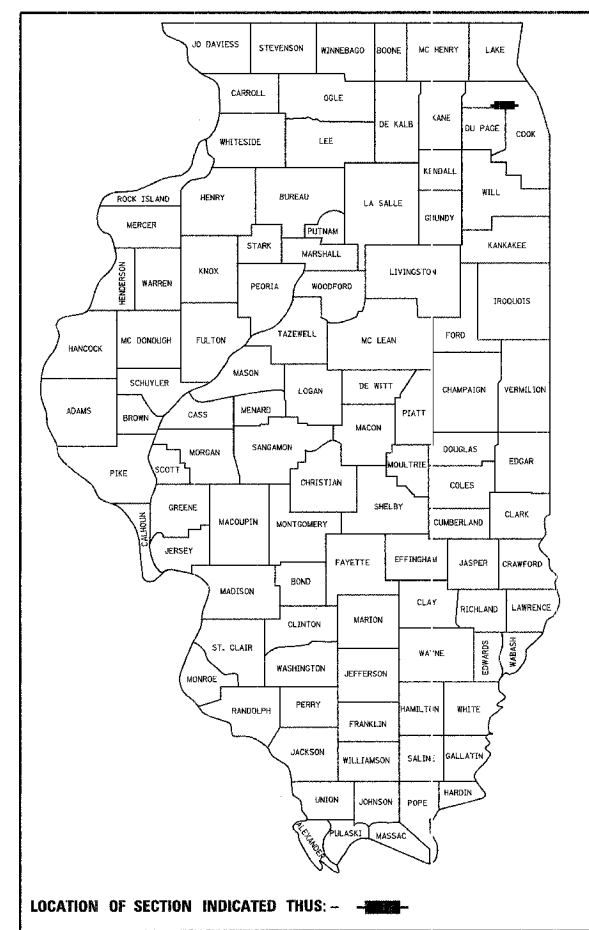
CONTRACT NO. 83893				
F.A.U. RTE.	SECTION	COUNTY	TOTAL SHEETS	SHEET NO.
	06-00051-00-MS	COOK/DUPAGE	14	1
COVER SHEET				
FED. ROAD DIST. NO. 7 ILLINOIS FED. AID PROJECT M-8003(658)				

STATE OF ILLINOIS
DEPARTMENT OF TRANSPORTATION
DIVISION OF HIGHWAYS

PLANS FOR PROPOSED FEDERAL AID PROJECT

T.C.M. BUS SHELTER IMPROVEMENTS
VARIOUS LOCATIONS
SECTION 06-00051-00-MS

PROJECT NO. M-8003(658)
BUS SHELTER AND LANDSCAPING INSTALLATION
COOK AND DUPAGE COUNTIES
C-91-429-06



STATE OF ILLINOIS
DEPARTMENT OF TRANSPORTATION
DIVISION OF HIGHWAYS

APPROVED NOVEMBER 28 20 06
Alan F. D'Amico
ELK GROVE VILLAGE, DIRECTOR OF ENGINEERING AND COMMUNITY DEVELOPMENT

PASSED DECEMBER 28 20 06
J. H. ...
DISTRICT ONE ENGINEER OF LOCAL ROADS & STREETS

RELEASING FOR BID
BASED ON LIMITED
REVIEW December 29 20 06
Drane O'Keefe
DEPUTY DIRECTOR OF HIGHWAYS, REGION ONE ENGINEER

David J. Kreeger 11-27-06 11-30-07
REGISTERED P.E., STATE OF ILLINOIS EXPIRES

PLANS PREPARED BY:

CIVILTECH
450 E. Devon Ave., Suite 300 - Itasca, Illinois 60143
Tel: 630.773.3900 - Fax: 630.773.3975
www.civiltechinc.com

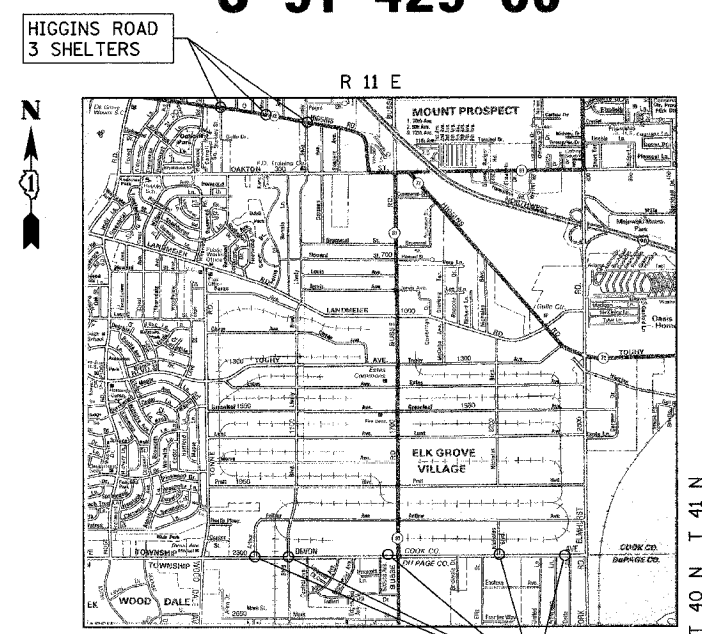
PRINTED BY THE AUTHORITY OF THE STATE OF ILLINOIS

INDEX OF SHEETS

SHEET NO.	DESCRIPTION
1	COVER SHEET
2-3	GENERAL NOTES
4	SUMMARY OF QUANTITIES
5	TYPICAL SECTIONS
6-13	PLAN SHEETS
14	DETAILS

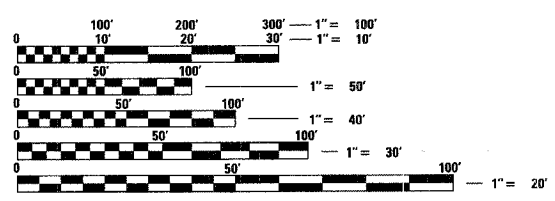
IDOT STANDARDS

000001-04	STANDARD SYMBOLS, ABBREVIATIONS, AND PATTERNS
424001-04	CURB RAMPS FOR SIDEWALKS
602001	CATCH BASIN TYPE C
604036-01	GRATE TYPE B
701602-02	URBAN LANE CLOSURE, MULTILANE, 2W WITH BIDIRECTIONAL LEFT TURN LANE
701701-04	URBAN LANE CLOSURE, MULTILANE INTERSECTION
701801-03	LANE CLOSURE MULTILANE, 1W OR 2W CROSSWALK OR SIDEWALK CLOSURE
702001-06	TRAFFIC CONTROL DEVICES
720001	SIGN PANEL MOUNTING DETAILS
720006-01	SIGN PANEL ERECTION DETAILS
728001	TELESCOPING STEEL SIGN SUPPORT



LOCATION MAP
NOT TO SCALE

GROSS & NET LENGTH: NOT APPLICABLE



FULL SIZE PLANS HAVE BEEN PREPARED USING STANDARD ENGINEERING SCALES. REDUCED SIZED PLANS WILL NOT CONFORM TO STANDARD SCALES. IN MAKING MEASUREMENTS ON REDUCED PLANS, THE ABOVE SCALES MAY BE USED.

J.U.I.E.
JOINT UTILITY LOCATION INFORMATION FOR EXCAVATION
1-800-892-0123

CONTRACT NO. 83893

THE "STANDARD SPECIFICATIONS FOR ROAD AND BRIDGE CONSTRUCTION", ADOPTED JANUARY 1, 2007 BY THE ILLINOIS DEPARTMENT OF TRANSPORTATION, SHALL GOVERN THIS WORK.

FEDERAL AID ENGINEER: ABIGAIL WILGREEN 847-705-4233 SCHALMBURG, IL
CONSULTANT ENGINEER: DAVID KREEGER, P.E. CIVILTECH ENGINEERING, INC.

F.A.U. RTE.	SECTION	COUNTY	TOTAL SHEETS	SHEET NO.
	06-00051-00-MS	COOK/DUPAGE	14	2
GENERAL NOTES				
FED. ROAD DIST. NO. 7 ILLINOIS FED. AID PROJECT M-8003(658)				

SPECIFICATIONS, STANDARDS AND SPECIAL PROVISIONS

- ALL REFERENCES TO "STANDARD SPECIFICATIONS" IN THESE GENERAL NOTES SHALL BE INTERPRETED TO MEAN THE "STANDARD SPECIFICATIONS FOR ROAD AND BRIDGE CONSTRUCTION" ADOPTED BY THE ILLINOIS DEPARTMENT OF TRANSPORTATION, JANUARY 1, 2007 AND THE "SUPPLEMENTAL SPECIFICATIONS AND RECURRING SPECIAL PROVISIONS", ADOPTED JANUARY 1, 2007.
- ALL CONSTRUCTION SHALL BE IN ACCORDANCE WITH THE "STANDARD SPECIFICATIONS FOR ROAD AND BRIDGE CONSTRUCTION", ADOPTED JANUARY 1, 2007; THE "SUPPLEMENTAL SPECIFICATIONS AND RECURRING SPECIAL PROVISIONS", ADOPTED JANUARY 1, 2007; THE LATEST EDITION OF THE "ILLINOIS MANUAL ON UNIFORM TRAFFIC CONTROL DEVICES FOR STREETS AND HIGHWAYS", (MUTCD); THE "STANDARD SPECIFICATIONS FOR TRAFFIC CONTROL ITEMS", (SSTCI). "THE STANDARD SPECIFICATIONS FOR WATER AND SEWER MAIN CONSTRUCTION IN ILLINOIS" MAY 1996 FIFTH EDITION, THE DETAILS IN THE PLANS, AND THE SPECIAL PROVISIONS AND IDOT STANDARD DRAWINGS INCLUDED IN THE CONTRACT DOCUMENTS.
- ALL TRAFFIC CONTROL AND OTHER ADVISORY SIGNS NEEDED FOR CONSTRUCTION ARE TO BE FURNISHED BY THE CONTRACTOR IN ACCORDANCE WITH SECTION 700, 701, AND 702 OF THE STANDARD SPECIFICATIONS FOR ROAD AND BRIDGE CONSTRUCTION AND SHALL BE INCLUDED IN THE PAY ITEMS "TRAFFIC CONTROL AND PROTECTION, STANDARD 701602", "TRAFFIC CONTROL AND PROTECTION, STANDARD 701701", AND "TRAFFIC CONTROL AND PROTECTION, STANDARD 701801".
- ALL REFERENCES TO "ENGINEER" SHALL BE INTERPRETED AS THE RESIDENT ENGINEER.
- NO WORK SHALL COMMENCE UNTIL TRAFFIC CONTROL REQUIREMENTS ARE MET AND APPROPRIATE PERMITS HAVE BEEN OBTAINED FROM THE VILLAGE OF ELK GROVE AND THE COOK COUNTY HIGHWAY DEPARTMENT.
- ALL UTILITY COMPANIES, SCHOOL DISTRICTS, AND LOCAL POLICE AND FIRE DEPARTMENTS SHALL BE NOTIFIED BY THE CONTRACTOR AT LEAST 72 HOURS PRIOR TO THE START OF CONSTRUCTION.
- IT SHALL BE THE CONTRACTOR'S RESPONSIBILITY TO VERIFY ALL DIMENSIONS AND CONDITIONS EXISTING IN THE FIELD PRIOR TO ORDERING MATERIALS AND BEGINNING CONSTRUCTION.

STAKING

- THE CONTRACTOR SHALL PROTECT AND CAREFULLY PRESERVE ALL SECTION OR SUBSECTION MONUMENTS OR PROPERTY OR REFERENCE MARKERS UNTIL THE VILLAGE, ITS AGENT OR AN AUTHORIZED SURVEYOR HAS WITNESSED OR OTHERWISE REFERENCED THEIR LOCATIONS.
- ALL RADII FOR PROPOSED CURB AND GUTTER ARE TO THE EDGE OF PAVEMENT UNLESS OTHERWISE NOTED.
- ESTIMATED LOCATIONS OF SIDEWALK REMOVAL AND REPLACEMENT HAVE BEEN SHOWN ON THE PLANS. THE ENGINEER WILL DETERMINE THE EXACT LIMITS IN THE FIELD DURING CONSTRUCTION.

PAVING AND CURB & GUTTER

- THE CONTRACTOR SHALL SAW CUT PAVEMENT, CURB & GUTTER, AND SIDEWALK AS INDICATED ON THE PLANS TO SEPARATE THE EXISTING MATERIAL TO BE REMOVED BY MEANS OF AN APPROVED CONCRETE SAW TO A DEPTH AS SHOWN ON THE PLANS OR AS DIRECTED BY THE ENGINEER. THIS WORK SHALL BE CONSIDERED INCIDENTAL TO THE ITEM BEING REMOVED.

TREE REMOVAL, CLEARING AND HEDGE REMOVAL

- THE CONTRACTOR SHALL NOTE THE PRESERVATION OF EXISTING TREES IS OF UTMOST IMPORTANCE TO THE VILLAGE OF ELK GROVE. THIS WORK SHALL BE IN ACCORDANCE WITH SECTION 201 OF THE STANDARD SPECIFICATIONS AND AS DIRECTED BY THE ENGINEER. TEMPORARY FENCE SHALL BE INSTALLED AROUND TREES AS SHOWN ON THE PLANS AND AS DIRECTED BY THE ENGINEER.
- ALL LIMBS, BRANCHES AND OTHER DEBRIS RESULTING FROM THIS WORK SHALL BE DISPOSED OF BY THE CONTRACTOR AT HIS OWN EXPENSE OUTSIDE THE LIMITS OF THE RIGHT-OF-WAY.

UTILITIES

- THE CONTRACTOR SHALL COOPERATE WITH THE VILLAGE IN ANY UNDERGROUND UTILITY CONSTRUCTION WHICH THE VILLAGE MAY WANT TO PLACE DURING THE CONTRACTOR'S OPERATIONS.
- THE CONTRACTOR SHALL COORDINATE CONSTRUCTION ACTIVITIES WITH UTILITY COMPANIES. THE LOCATION OF PUBLIC OR PRIVATE UTILITIES SHOWN ON THE PLANS ARE APPROXIMATE AND THE ENGINEER DOES NOT GUARANTEE THEIR ACCURACY. THE CONTRACTOR WILL BE REQUIRED TO ASCERTAIN THE EXACT LOCATION OF SUCH UTILITIES AND EXERCISE CARE DURING HIS CONSTRUCTION OPERATIONS SO AS NOT TO DAMAGE THEM IN ACCORDANCE WITH THE SPECIAL PROVISIONS AND ARTICLE 107.31 OF THE "STANDARD SPECIFICATIONS." THE CONTRACTOR SHALL BE RESPONSIBLE FOR CONTACTING THE OWNERS OF ALL EXISTING UTILITIES SO THAT THEIR FACILITIES MAY BE LOCATED AND ADJUSTED OR MOVED, IF NECESSARY, PRIOR TO THE START OF THE CONSTRUCTION OPERATIONS.
- THE CONTRACTOR SHALL BE RESPONSIBLE FOR THE PROTECTION OF ALL ABOVE AND BELOW GROUND UTILITIES EVEN THOUGH THEY MAY NOT BE SHOWN ON THE PLANS. ANY UTILITY THAT IS DAMAGED DURING CONSTRUCTION SHALL BE REPAIRED OR REPLACED TO THE SATISFACTION OF THE ENGINEER OR THE VILLAGE. THIS WORK SHALL BE AT THE CONTRACTOR'S EXPENSE. THE CONTRACTOR SHALL NOTIFY ALL UTILITY OWNERS OF HIS CONSTRUCTION SCHEDULE AND SHALL COORDINATE CONSTRUCTION OPERATIONS WITH THE UTILITY OWNERS SO THAT RELOCATION OF UTILITY LINES AND STRUCTURES MAY PROCEED IN AN ORDERLY MANNER. NOTIFICATION SHALL BE IN WRITING, WITH COPIES TRANSMITTED TO THE ENGINEER.
- COORDINATION OF ANY UTILITY WORK INVOLVED IN THE CONSTRUCTION AREA WILL BE DISCUSSED AT THE PRECONSTRUCTION CONFERENCE.
- BEFORE STARTING ANY EXCAVATION, THE CONTRACTOR SHALL CALL "JULIE" AT 1-800-892-0123 FOR FIELD LOCATIONS OF BURIED ELECTRIC, TELEPHONE, GAS, WATER, SEWER AND CABLE TELEVISION FACILITIES. (48 HOURS NOTIFICATION IS REQUIRED.)
- WHENEVER DURING CONSTRUCTION OPERATIONS ANY LOOSE MATERIAL IS DEPOSITED IN THE FLOW LINE OF DRAINAGE STRUCTURES SUCH THAT THE NATURAL FLOW OF WATER IS OBSTRUCTED, IT SHALL BE REMOVED AT THE CLOSE OF EACH WORKING DAY. AT THE CONCLUSION OF CONSTRUCTION OPERATIONS, ALL UTILITY STRUCTURES SHALL BE FREE FROM DIRT AND DEBRIS. THE WORK SPECIFIED ABOVE WILL NOT BE PAID FOR SEPARATELY BUT SHALL BE INCLUDED IN THE CONTRACT.
- ANY EXISTING OR PROPOSED SEWER DAMAGED BY THE CONTRACTOR DURING CONSTRUCTION SHALL BE REPLACED BY THE CONTRACTOR TO THE SATISFACTION OF THE ENGINEER AT NO COST TO THE VILLAGE.
- THE CONTRACTOR SHALL RECEIVE NO ADDITIONAL COMPENSATION FOR CONSTRUCTION STAGING NECESSARY TO ACCOMMODATE UTILITY RELOCATION OR ADJUSTMENT AND/OR FOR DELAYS CAUSED BY UTILITY RELOCATION OR ADJUSTMENT.
- THE CONTRACTOR SHALL BE RESPONSIBLE FOR CONTACTING LOCAL AGENCIES MAINTAINING SANITARY SEWERS AND WATER MAINS TO VERIFY THE MATERIALS AND METHODS ALLOWED FOR THE ADJUSTMENT OR RELOCATION OF THEIR FACILITIES, IF NECESSARY.

EXCAVATION

- ALL EMBANKMENTS AND SUB-GRADE SHALL BE COMPACTED TO THE SATISFACTION OF THE ENGINEER PRIOR TO THE PLACEMENT OF GRANULAR SUB-BASE OR EMBANKMENT.
- ALL EXCESS MATERIAL (BROKEN CONCRETE, SEWER PIPE, WASTE ROADWAY EXCAVATION AND SURPLUS MATERIAL FROM SEWER TRENCHES) SHALL BE LEGALLY DISPOSED OF OUTSIDE THE LIMITS OF THE RIGHT-OF-WAY. IT SHALL BE THE CONTRACTOR'S RESPONSIBILITY TO SELECT DUMP SITES AND OBTAIN PERMISSION AND ALL NECESSARY PERMITS TO USE SUCH DUMP SITES. PAYMENT FOR THIS WORK SHALL BE INCLUDED IN "EARTH EXCAVATION, SPECIAL."

STORM & SANITARY SEWER

- THE COST OF MAKING SEWER CONNECTIONS TO EXISTING OR PROPOSED SEWER OR DRAINAGE STRUCTURES SHALL BE INCIDENTAL TO THE COST OF THE SEWER OR STRUCTURE BEING CONSTRUCTED.
- UNLESS OTHERWISE NOTED ON THE PLANS, THE EXISTING DRAINAGE FACILITIES SHALL REMAIN IN USE DURING THE PERIOD OF CONSTRUCTION. LOCATIONS OF EXISTING DRAINAGE STRUCTURES AND SEWERS AS SHOWN ON THE PLANS ARE APPROXIMATE. PRIOR TO COMMENCING WORK THE CONTRACTOR, AT HIS OWN EXPENSE, SHALL DETERMINE THE EXACT LOCATIONS OF EXISTING STRUCTURES WHICH ARE WITHIN THE PROPOSED CONSTRUCTION LIMITS.

DURING CONSTRUCTION, IF THE CONTRACTOR ENCOUNTERS OR OTHERWISE BECOMES AWARE OF ANY SEWERS, UNDERDRAINS OR FIELD DRAINS WITHIN THE RIGHT-OF-WAY OTHER THAN THOSE SHOWN ON THE PLANS, HE SHALL SO INFORM THE ENGINEER, WHO SHALL DIRECT THE WORK NECESSARY TO MAINTAIN OR REPLACE THE FACILITIES IN SERVICE AND TO PROTECT THEM FROM DAMAGE DURING CONSTRUCTION IF MAINTAINED. EXISTING FACILITIES TO BE MAINTAINED THAT ARE DAMAGED BECAUSE OF THE NON-COMPLIANCE WITH THIS PROVISION SHALL BE REPLACED AT THE CONTRACTOR'S EXPENSE. SHOULD THE ENGINEER HAVE DIRECTED THE REPLACEMENT OF A FACILITY, THE NECESSARY WORK AND PAYMENT SHALL BE IN ACCORDANCE WITH SECTIONS 550 AND 601, AND ARTICLE 104.02 OF THE STANDARD SPECIFICATIONS.
- WHEN EXISTING DRAINAGE FACILITIES ARE DISTURBED, THE CONTRACTOR SHALL PROVIDE AND MAINTAIN TEMPORARY OUTLETS AND CONNECTIONS FOR ALL PRIVATE OR PUBLIC DRAINS, SEWERS OR CATCH BASINS. THE CONTRACTOR SHALL PROVIDE FACILITIES TO TAKE IN ALL STORM WATER WHICH WILL BE RECEIVED BY THESE DRAINS AND SEWERS AND DISCHARGE THE SAME. HE SHALL PROVIDE AND MAINTAIN AN EFFICIENT PUMPING PLANT, IF NECESSARY, AND A TEMPORARY OUTLET. HE SHALL BE PREPARED AT ALL TIMES TO DISPOSE OF THE WATER RECEIVED FROM TEMPORARY CONNECTIONS UNTIL SUCH TIME AS THE PERMANENT CONNECTIONS WITH SEWER ARE BUILT AND IN SERVICE. THIS WORK WILL NOT BE PAID FOR SEPARATELY, BUT SHALL BE INCLUDED IN THE CONTRACT.
- TOP OF FRAME ("RIM") ELEVATIONS GIVEN ON THE PLANS ARE ONLY TO ASSIST THE CONTRACTOR IN DETERMINING THE APPROXIMATE OVERALL HEIGHT OF EACH STRUCTURE. FRAMES ON ALL NEW STRUCTURES SHALL BE ADJUSTED TO THE FINAL ELEVATIONS OF THE AREAS IN WHICH THEY ARE LOCATED, AS PART OF THE STRUCTURE COST.
- ALL SEWER AND WATER SERVICES CROSSED BY NEW STORM SEWERS SHALL BE PROPERLY LOCATED AND PROTECTED DURING CONSTRUCTION. ANY DAMAGE TO SAID SERVICES NOT CONSIDERED TO BE IN CONFLICT WITH THE PROPOSED STORM SEWER SHALL BE REPAIRED BY THE CONTRACTOR AT HIS OWN EXPENSE.

ILLINOIS DEPARTMENT OF TRANSPORTATION

GENERAL NOTES

DATE: 12/1/06
DESIGNED BY: DJK
CHECKED BY: JRV

F.A.U. RTE.	SECTION	COUNTY	TOTAL SHEETS	SHEET NO.
	06-00051-00-MS	COOK/DUPAGE	14	3
GENERAL NOTES				
FED. ROAD DIST. NO. 7 ILLINOIS FED. AID PROJECT M-80036581				

SIGNING, STRIPING & LANDSCAPING

1. WHEN DIRECTED BY THE ENGINEER, SUPPLEMENTAL WATERING SHALL BE APPLIED TO ALL SODDED AREAS PRIOR TO FINAL ACCEPTANCE AT A RATE SPECIFIED BY THE ENGINEER AND IN ACCORDANCE WITH THE "STANDARD SPECIFICATIONS" AND SPECIAL PROVISIONS.
2. THE CONTRACTOR SHALL ADHERE TO LIMITS OF RESTORATION DETERMINED BY THE ENGINEER, PRIOR TO THE START OF CONSTRUCTION. AREAS OUTSIDE THESE LIMITS THAT ARE DAMAGED OR DISTURBED BY THE CONTRACTOR SHALL BE RESTORED BY THE CONTRACTOR AT HIS EXPENSE, AND NO ADDITIONAL COMPENSATION WILL BE ALLOWED.
3. ADDITIONAL WATERING OF THE PROPOSED SHRUBS IS REQUIRED DURING THE PERIOD OF ESTABLISHMENT, AS DEFINED IN THE SPECIAL PROVISIONS. THIS WORK SHALL BE INCLUDED IN THE COST OF THE SHRUB BEING PLANTED.
4. ALL EXISTING TRAFFIC SIGNS WHICH INTERFERE WITH THE CONTRACTOR'S WORK SHALL BE REMOVED, A RECORD MADE OF THEIR CONDITION, AND SAFELY STORED AND SAFEGUARDED BY THE CONTRACTOR UNTIL THE ENGINEER DETERMINES THAT THEY BE REINSTALLED IN THEIR PERMANENT LOCATIONS.
5. IMMEDIATELY AFTER EACH SIGN IS REMOVED, A TEMPORARY SIGN OF THE SAME TYPE SHALL BE INSTALLED ON A SIGN SUPPORT APPROVED BY, AND AT A LOCATION DETERMINED BY, THE ENGINEER. THESE SIGNS SHALL BE MAINTAINED STRAIGHT AND CLEAN UNTIL THE PERMANENT SIGNS ARE REINSTALLED.
6. ANY SIGN WHICH IS DAMAGED DURING THE TIME IT IS STORED SHALL BE REPAIRED OR REPLACED IN KIND BY THE CONTRACTOR AT HIS OWN EXPENSE PRIOR TO PERMANENT REINSTALLATION.
7. ALL UNUSED SIGNS AND POSTS SHALL BE RETURNED TO THE VILLAGE OF ELK GROVE'S PUBLIC WORKS FACILITY.
8. THE COST OF STORING AND SAFEGUARDING THE PERMANENT SIGNS AND POSTS, AND REINSTALLING THE PERMANENT SIGNS SHALL BE INCLUDED IN THE CONTRACT UNIT PRICE FOR "RELOCATE SIGN PANEL ASSEMBLY" OF THE TYPE SPECIFIED. NEW SIGN SUPPORTS SHALL BE USED FOR REINSTALLED SIGNS. FURNISHING, INSTALLING, MAINTAINING AND REMOVING THE TEMPORARY SIGNS SHALL BE INCLUDED IN THE CONTRACT LUMP SUM PRICE FOR THE VARIOUS TRAFFIC CONTROL AND PROTECTION PAY ITEMS. THE SUPPORTS SHALL BE PAID FOR AS "TELESCOPING STEEL SIGN SUPPORT."

EROSION CONTROL

1. ALL VEGETATIVE AND STRUCTURAL EROSION CONTROL PRACTICES SHALL BE CONSTRUCTED AND MAINTAINED IN ACCORDANCE WITH THE MINIMUM STANDARDS AND SPECIFICATIONS OF THE "ILLINOIS PROCEDURES AND STANDARDS FOR URBAN SOIL EROSION AND SEDIMENTATION CONTROL" AND THE "STANDARDS AND SPECIFICATIONS FOR SOIL EROSION AND SEDIMENT CONTROL" OF THE ILLINOIS ENVIRONMENTAL PROTECTION AGENCY.
2. SOIL DISTURBANCE SHALL BE CONDUCTED IN SUCH A MANNER AS TO MINIMIZE EROSION. SOIL STABILIZATION MEASURES SHALL CONSIDER THE TIME OF YEAR, SITE CONDITIONS AND THE USE OF TEMPORARY OR PERMANENT MEASURES.
3. THE CONTRACTOR SHALL INSPECT ALL EROSION CONTROL MEASURES PERIODICALLY AND AFTER EACH RUNOFF-PRODUCING RAINFALL EVENT. ANY NECESSARY REPAIRS OR CLEANUP TO MAINTAIN THE EFFECTIVENESS OF SAID MEASURES SHALL BE MADE IMMEDIATELY.
4. THE MAINTENANCE AND REPAIR OR REPLACEMENT OF EROSION CONTROL ITEMS, WHEN DIRECTED BY THE ENGINEER, WILL NOT BE PAID FOR SEPARATELY, BUT SHALL BE INCLUDED IN THE COST OF THE ASSOCIATED PAY ITEMS.
5. ALL STORM SEWER FACILITIES THAT ARE OR WILL BE FUNCTIONING DURING CONSTRUCTION SHALL BE PROTECTED, FILTERED OR OTHERWISE TREATED TO REMOVE SEDIMENT. MUD AND SEDIMENT DEPOSITS SHALL BE REMOVED FROM THE ROADWAY AT THE END OF EACH WORK DAY BY SHOVELING AND/OR SWEEPING.
6. ALL SLOPES SHALL BE COVERED WITH SOD AS SOON AS GRADING AND PLACEMENT OF TOPSOIL HAS BEEN COMPLETED. THE LIMITS OF THE SODDING SHALL BE THE LIMITS OF GRADING.
7. INLET FILTERS SHALL BE PLACED ON ALL CATCH BASINS, INLETS, AND MANHOLES WITH OPEN GRATES, WHEN DIRECTED BY THE ENGINEER.
8. THE EROSION CONTROL MEASURES INDICATED ON THE PLANS ARE THE MINIMUM REQUIREMENTS. ADDITIONAL MEASURES MAY BE REQUIRED, AS DIRECTED BY THE ENGINEER.

MISCELLANEOUS

1. DIMENSIONS: IT SHALL BE THE CONTRACTOR'S RESPONSIBILITY TO VERIFY ALL DIMENSIONS AND CONDITIONS EXISTING IN THE FIELD PRIOR TO ORDERING MATERIALS AND BEGINNING CONSTRUCTION.
2. SITE OBJECTS: REMOVAL OF MISCELLANEOUS PARKWAY IMPROVEMENT INCLUDING, BUT NOT LIMITED TO, BLOCK RETAINING WALLS, CONCRETE RETAINING WALLS, LANDSCAPE TIMBERS, LANDSCAPE ROCKS, FENCES, FENCE POSTS, PLANTERS, VEGETATION, BRICK OR BRICK PAVEMENT WALKWAYS WITHIN R.O.W. LIMITS SHALL BE INCIDENTAL TO THE PAY ITEM FOR "EARTH EXCAVATION, SPECIAL."
3. THE CONTRACTOR SHALL ADHERE TO IDOT STANDARD DRAWING NO. 701801-03 WHEN CLOSING ANY SIDEWALK TO PERMIT CONSTRUCTION OF THE IMPROVEMENTS.
4. UNLESS OTHERWISE AUTHORIZED BY THE ENGINEER, ALL EXISTING ACCESS POINTS SHALL BE MAINTAINED AT ALL TIMES BY THE CONTRACTOR.
5. THE CONTRACTOR SHALL NOT CROSS COMPLETED BASE COURSE, OR EXISTING PAVEMENT NOT SCHEDULED TO BE REMOVED, WITH CONSTRUCTION EQUIPMENT WHICH MAY DAMAGE THE PAVEMENT.

ILLINOIS DEPARTMENT OF TRANSPORTATION

GENERAL NOTES

DATE: 12/1/06
 DESIGNED BY: DJK
 CHECKED BY: JRV

F.A.U. RTE.	SECTION	COUNTY	TOTAL SHEETS	SHEET NO.
	06-00051-00-MS	COOK/DUPAGE	14	4
SUMMARY OF QUANTITIES				
FED. ROAD DIST. NO. 7 ILLINOIS FED. AID PROJECT M-80036581				

SUMMARY OF QUANTITIES			CONSTRUCTION TYPE CODE
CODE NO.	PAY ITEM	UNIT	TOTAL
			Y108
20101000	TEMPORARY FENCE	FOOT	120
20101100	TREE TRUNK PROTECTION	EACH	4
20101200	TREE ROOT PRUNING	EACH	4
20101300	TREE PRUNING (1 TO 10 INCH DIAMETER)	EACH	4
● 21101615	TOPSOIL FURNISH AND PLACE, 4"	SQ YD	1256
● 25000400	NITROGEN FERTILIZER NUTRIENT	POUND	18
● 25000500	PHOSPHORUS FERTILIZER NUTRIENT	POUND	18
● 25000600	POTASSIUM FERTILIZER NUTRIENT	POUND	18
● 25200100	SODDING	SQ YD	770
● 25200110	SODDING, SALT TOLERANT	SQ YD	486
25200200	SUPPLEMENTAL WATERING	UNIT	25
28000510	INLET FILTERS	EACH	11
42001300	PROTECTIVE COAT	SQ YD	867
42400430	PORTLAND CEMENT CONCRETE SIDEWALK 5 INCH, SPECIAL	SQ FT	6667
42400800	DETECTABLE WARNING	SQ FT	30
44000500	COMBINATION CURB AND GUTTER REMOVAL	FOOT	27
44000600	SIDEWALK REMOVAL	SQ FT	2837
550A0050	STORM SEWERS, CLASS A, TYPE 1 12"	FOOT	3
60207605	CATCH BASINS, TYPE C, TYPE 8 GRATE	EACH	1
60255500	MANHOLES TO BE ADJUSTED	EACH	1
60604200	COMBINATION CONCRETE CURB AND GUTTER, TYPE B-6.12 (SPECIAL)	FOOT	18
60605400	COMBINATION CONCRETE CURB AND GUTTER, TYPE B-6.24 (SPECIAL)	FOOT	9
67100100	MOBILIZATION	L. SUM	1
70102632	TRAFFIC CONTROL AND PROTECTION, STANDARD 701602	L. SUM	1
70102635	TRAFFIC CONTROL AND PROTECTION, STANDARD 701701	L. SUM	1
70102640	TRAFFIC CONTROL AND PROTECTION, STANDARD 701801	L. SUM	1
● 72400500	RELOCATE SIGN PANEL ASSEMBLY - TYPE A	EACH	1
● 72800100	TELESCOPING STEEL SIGN SUPPORT	FOOT	15
XX000613	MODULAR BLOCK RETAINING WALL	SQ FT	152
XX000810	CONCRETE PAVERS	SQ FT	830
● XX000959	TRASH RECEPTACLES	EACH	11
XX003461	EARTH EXCAVATION, SPECIAL	L. SUM	1
● XX003689	BUS SHELTER	EACH	11
● XX005186	HEMEROCALLIS "STELLA D'ORO" (1 GAL)	EACH	28

● INDICATES SPECIALTY ITEMS

REVISIONS	
NAME	DATE

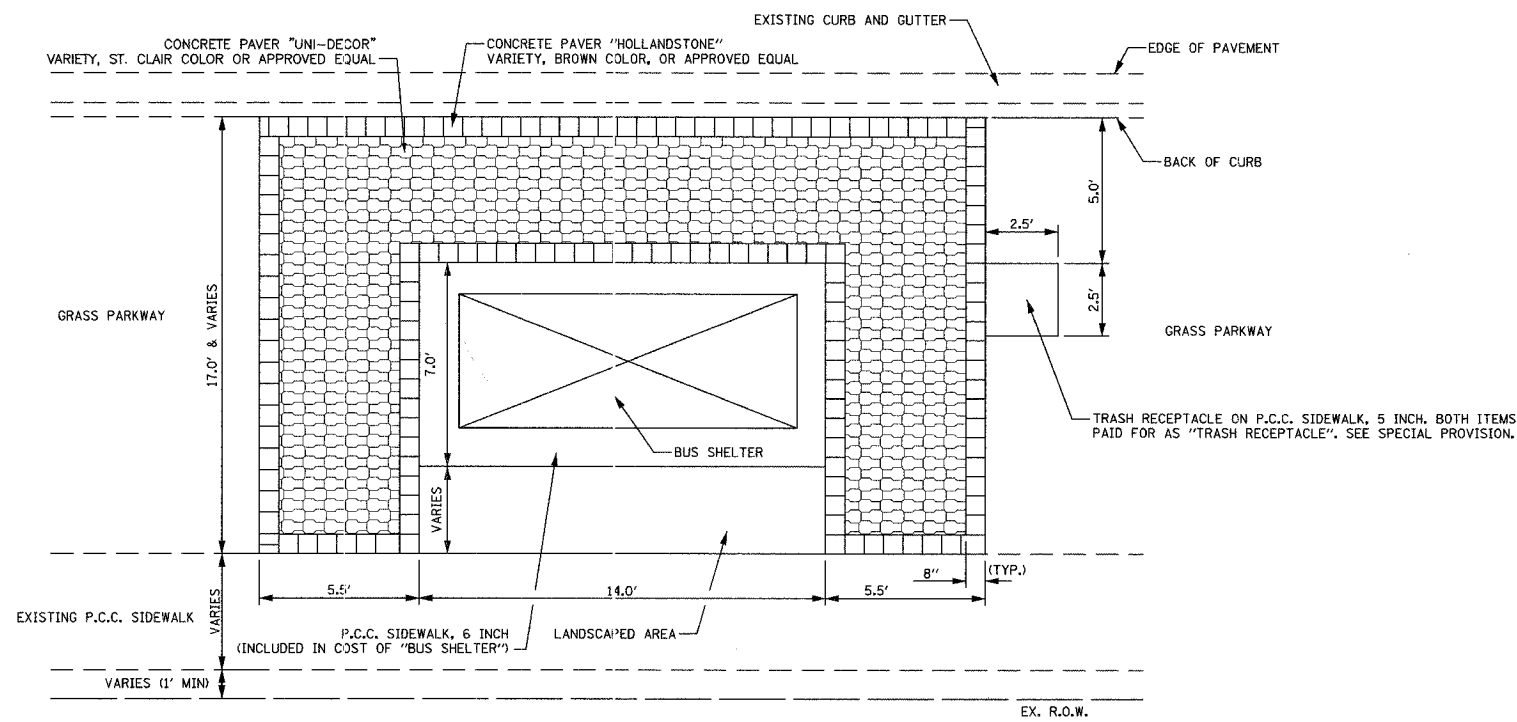
ILLINOIS DEPARTMENT OF TRANSPORTATION

SUMMARY OF QUANTITIES

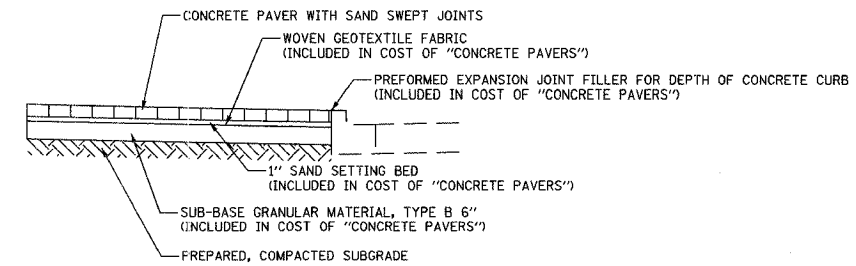
SCALE: VERT.
HORIZ.
DATE 12/1/06

DRAWN BY JRR
CHECKED BY JRV

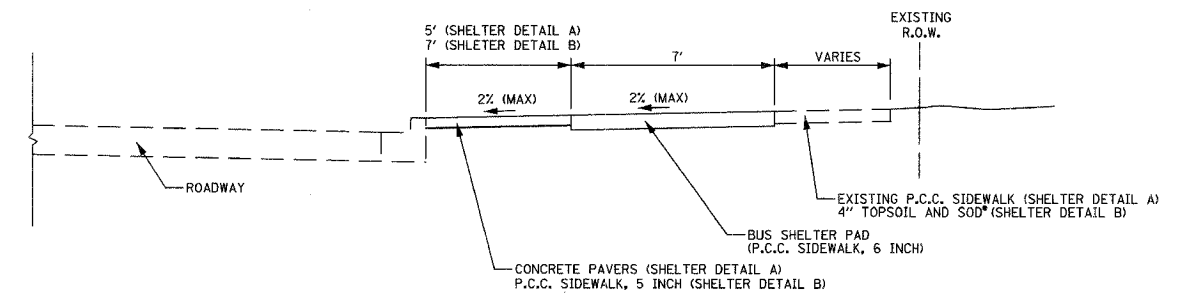
F.A.U. RTE.	SECTION	COUNTY	TOTAL SHEETS	SHEET NO.
06-00051-00-MS	COOK/DUPAGE		14	5
TYPICAL SECTIONS				
FED. ROAD DIST. NO. 7 ILLINOIS FED. AID PROJECT M-8003658				



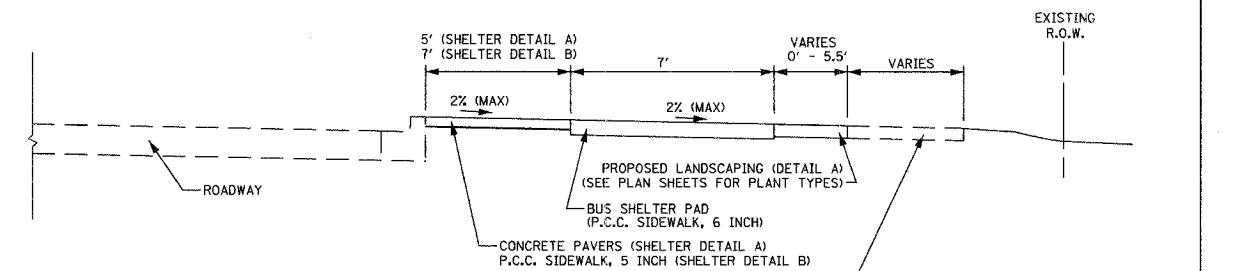
TYPICAL SHELTER DETAIL A
SIDEWALK LOCATED AT RIGHT OF WAY



CONCRETE PAVER DETAIL

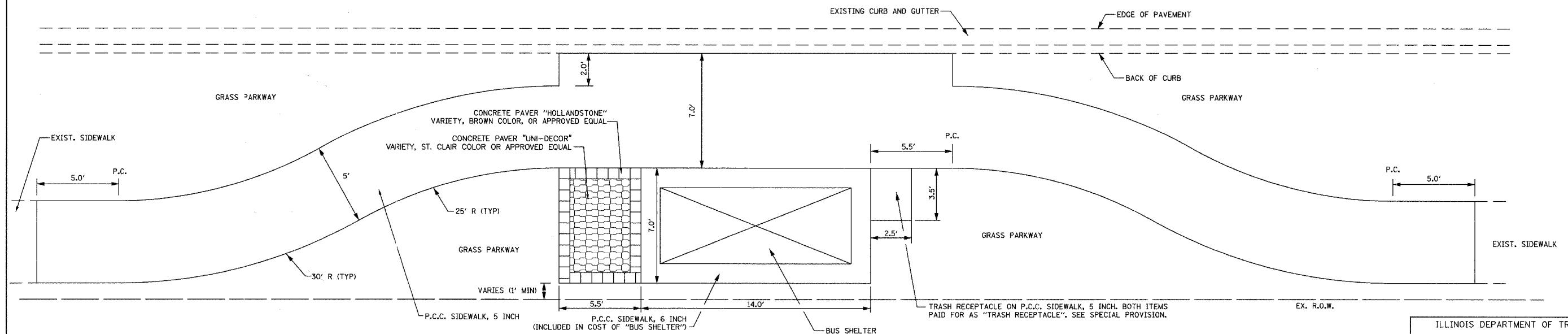


TYPICAL SHELTER CROSS SECTION 1



TYPICAL SHELTER CROSS SECTION 2

*SOD SHALL BE "SODDING, SALT TOLERANT" ON HIGGINS ROAD
SOD SHALL BE "SODDING" AT ALL OTHER LOCATIONS



TYPICAL SHELTER DETAIL B
PROPOSED SIDEWALK LOCATED AT EXISTING BACK OF CURB

ILLINOIS DEPARTMENT OF TRANSPORTATION
TYPICAL SECTIONS

DATE: 12/1/06
DESIGNED BY: DJK
CHECKED BY: JRV

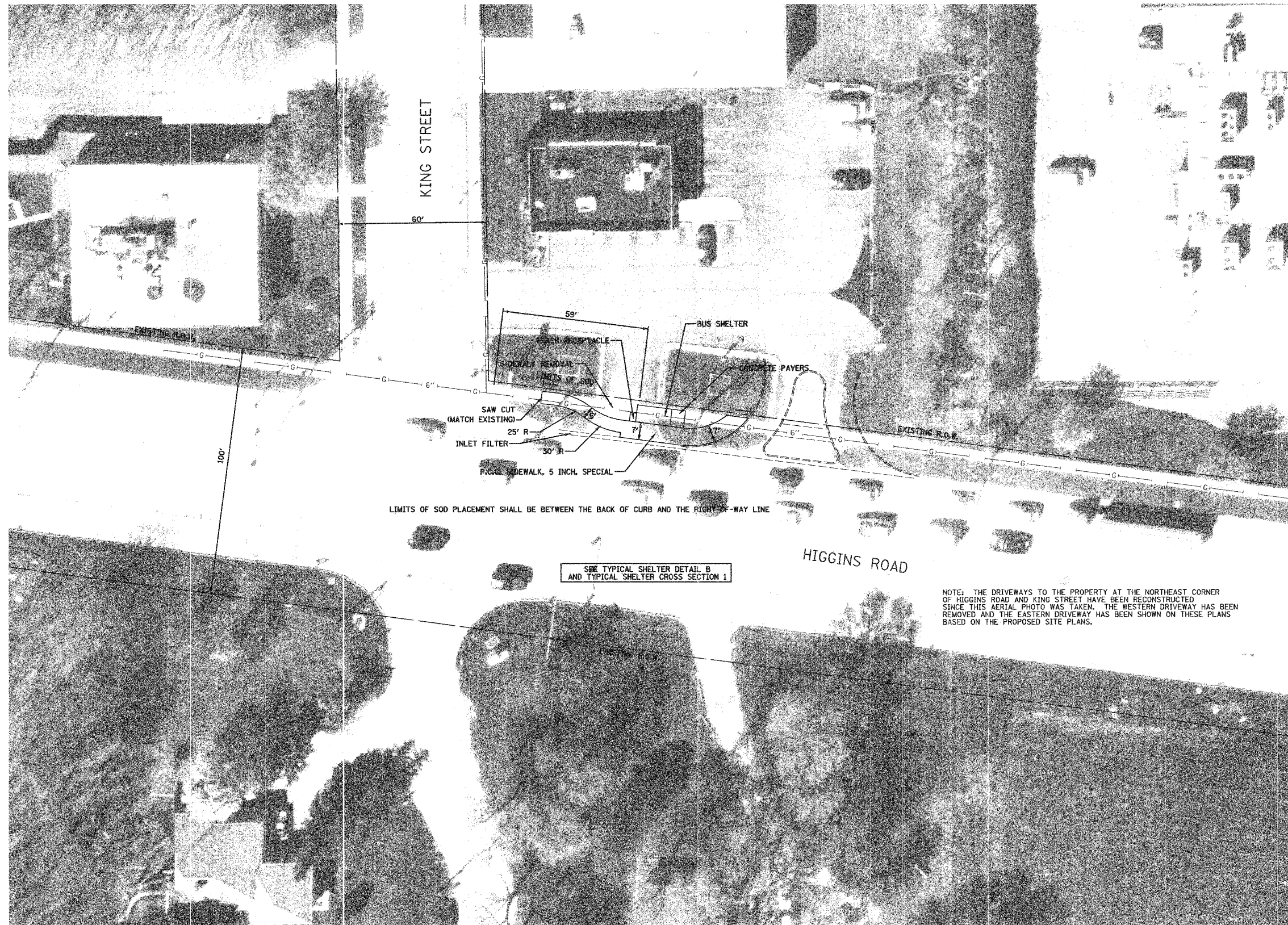
NOT TO SCALE

F.A.U. RTE.	SECTION	COUNTY	TOTAL SHEETS	SHEET NO.
06-00051-00-MS	COOK/DUPAGE		14	6
STA.		TO STA.		
FED. ROAD DIST. NO. 7 ILLINOIS FED. AID PROJECT M-80036581				



SCHEDULE OF QUANTITIES

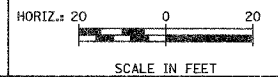
SIDEWALK REMOVAL	413 SQ FT
P.C.C. SIDEWALK, 5 INCH, SPECIAL	522 SQ FT
PROTECTIVE COAT	69 SQ YD
CONCRETE PAVERS	38.5 SQ FT
BUS SHELTER	1 EACH
TRASH RECEPTACLES	1 EACH
FURNISH AND PLACE TOPSOIL, 4"	60 SQ YD
SODDING, SALT TOLERANT	60 SQ YD
FERTILIZER NUTRIENTS	1 POUND
INLET FILTERS	1 EACH



ILLINOIS DEPARTMENT OF TRANSPORTATION

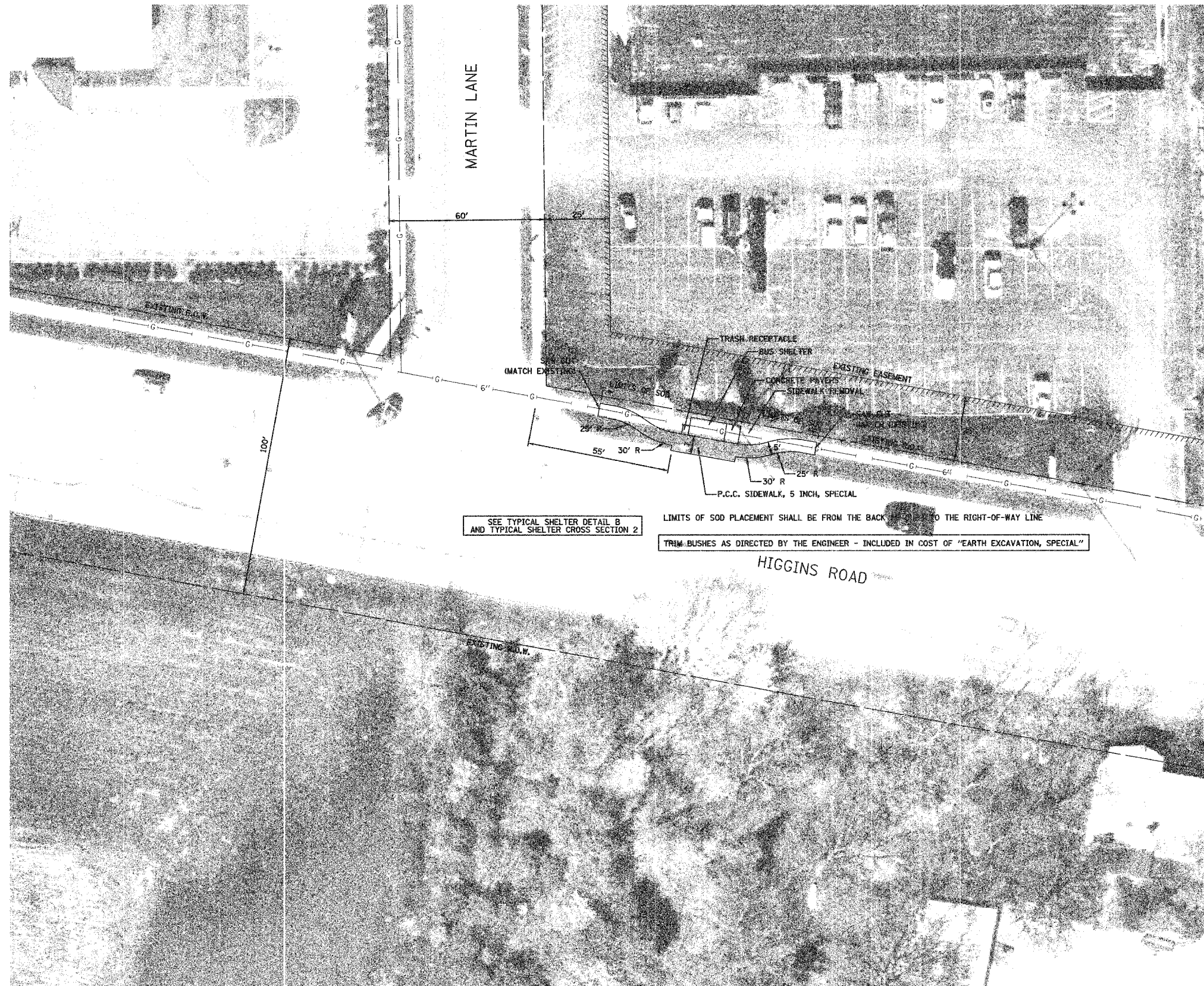
BUS SHELTER INSTALLATION PLAN

NORTHEAST CORNER OF
HIGGINS ROAD AND KING STREET



DATE: 12/1/06
DESIGNED BY: DJK
CHECKED BY: JRV

F.A.U. RTE.	SECTION	COUNTY	TOTAL SHEETS	SHEET NO.
06-00051-00-MS	COOK/DUPAGE	14	7	
STA.		TO STA.		
FED. ROAD DIST. NO. 7		ILLINOIS FED. AID PROJECT M-8003658		



SCHEDULE OF QUANTITIES

SIDEWALK REMOVAL	425 SQ FT
P.C.C. SIDEWALK, 5 INCH, SPECIAL	484 SQ FT
PROTECTIVE COAT	65 SQ YD
CONCRETE PAVERS	38.5 SQ FT
BUS SHELTER	1 EACH
TRASH RECEPTACLES	1 EACH
FURNISH AND PLACE TOPSOIL, 4"	78 SQ YD
SODDING, SALT TOLERANT	78 SQ YD
FERTILIZER NUTRIENT	1 POUND

SEE TYPICAL SHELTER DETAIL B AND TYPICAL SHELTER CROSS SECTION 2

LIMITS OF SOD PLACEMENT SHALL BE FROM THE BACK TO THE RIGHT-OF-WAY LINE

TRIM BUSHES AS DIRECTED BY THE ENGINEER - INCLUDED IN COST OF "EARTH EXCAVATION, SPECIAL"

ILLINOIS DEPARTMENT OF TRANSPORTATION
BUS SHELTER INSTALLATION PLAN
 NORTHEAST CORNER OF
 HIGGINS ROAD AND MARTIN LANE

HORIZ.: 20 0 20
 SCALE IN FEET

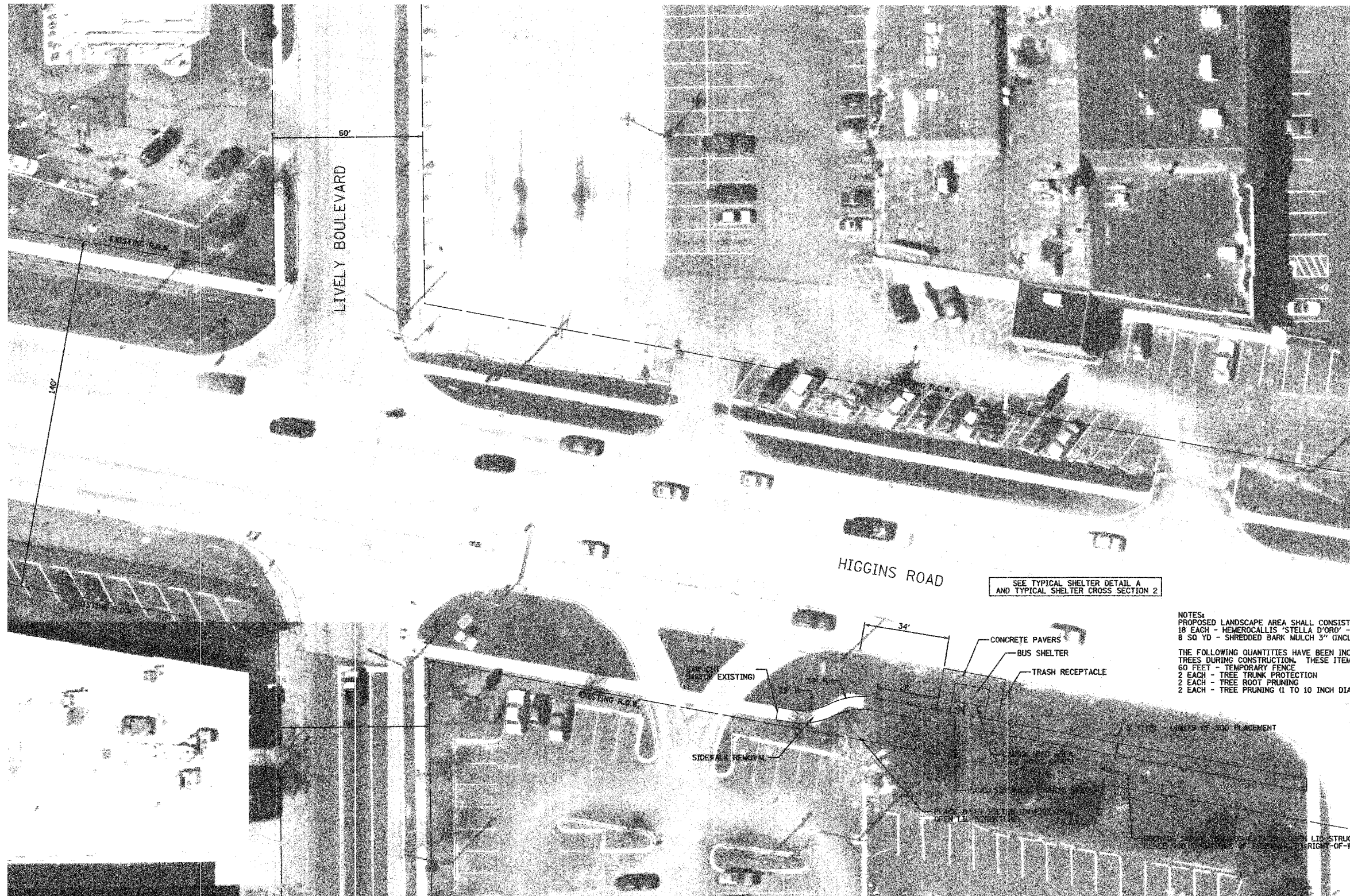
DATE: 12/1/06
 DESIGNED BY: DJK
 CHECKED BY: JRV

F.A.U. RTE.	SECTION	COUNTY	TOTAL SHEETS	SHEET NO.
06-00051-00-MS	COOK/DUPAGE		14	8
STA.		TO STA.		
FED. ROAD DIST. NO. 7 ILLINOIS FED. AID PROJECT M-8003(658)				



SCHEDULE OF QUANTITIES

SIDEWALK REMOVAL	187 SQ FT
P.C.C. SIDEWALK, 5 INCH, SPECIAL	1078 SQ FT
PROTECTIVE COAT	131 SQ YD
CONCRETE PAVERS	254 SQ YD
BUS SHELTER	1 EACH
TRASH RECEPTACLES	1 EACH
FURNISH AND PLACE TOPSOIL, 4"	348 SQ YD
SODDING, SALT TOLERANT	348 SQ YD
FERTILIZER NUTRIENT	5 POUND
INLET FILTERS	1 EACH



SEE TYPICAL SHELTER DETAIL A AND TYPICAL SHELTER CROSS SECTION 2

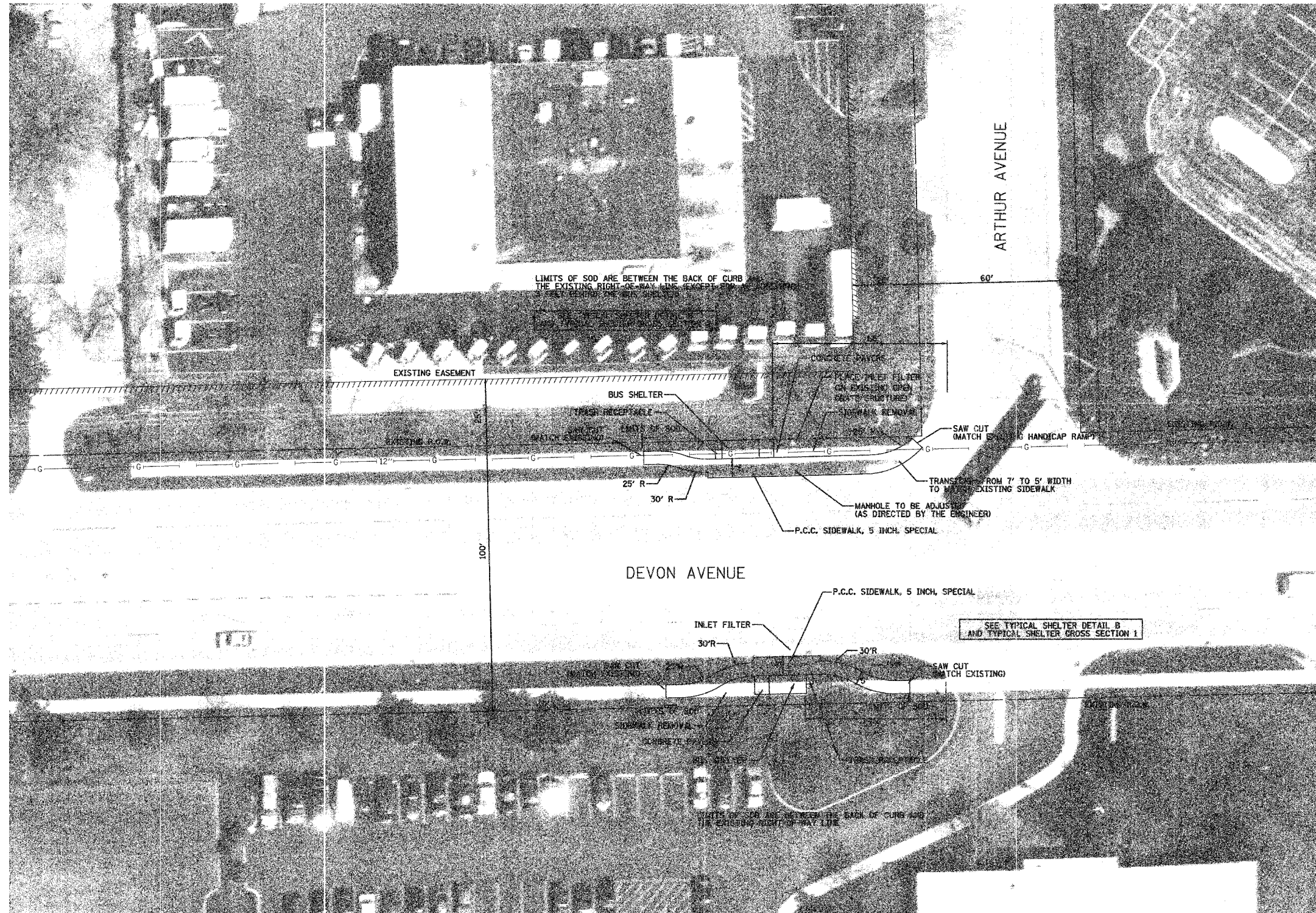
NOTES:
 PROPOSED LANDSCAPE AREA SHALL CONSIST OF THE FOLLOWING:
 18 EACH - HEMEROCALLIS "STELLA D'ORO" - STELLA D'ORO DAYLILY - EVENLY SPACED
 8 SQ YD - SHREDDED BARK MULCH 3" (INCLUDED IN COST OF PLANTINGS)
 THE FOLLOWING QUANTITIES HAVE BEEN INCLUDED TO PROTECT THE EXISTING TREES DURING CONSTRUCTION. THESE ITEMS SHALL BE USED AT THE DIRECTION OF THE ENGINEER:
 60 FEET - TEMPORARY FENCE
 2 EACH - TREE TRUNK PROTECTION
 2 EACH - TREE ROOT PRUNING
 2 EACH - TREE PRUNING (1 TO 10 INCH DIAMETER)

ILLINOIS DEPARTMENT OF TRANSPORTATION
BUS SHELTER INSTALLATION PLAN
 SOUTHEAST CORNER OF
 HIGGINS ROAD AND LIVELY BOULEVARD

HORIZ.: 20 0 20
 SCALE IN FEET

DATE: 12/1/06
 DESIGNED BY: DJK
 CHECKED BY: JRV

F.A.U. RTE.	SECTION	COUNTY	TOTAL SHEETS	SHEET NO.
	06-00051-00-MS	COOK/DUPAGE	14	9
STA.		TO STA.		
FED. ROAD DIST. NO. 7 ILLINOIS FED. AID PROJECT M-8003658				



SCHEDULE OF QUANTITIES (NORTH SIDE)

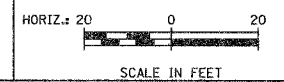
SIDEWALK REMOVAL	516 SQ FT
P.C.C. SIDEWALK, 5 INCH, SPECIAL	671 SQ FT
PROTECTIVE COAT	86 SQ YD
CONCRETE PAVERS	38.5 SQ FT
BUS SHELTER	1 EACH
TRASH RECEPTACLES	1 EACH
FURNISH AND PLACE TOPSOIL, 4"	70 SQ YD
SODDING	70 SQ YD
FERTILIZER NUTRIENT	1 POUND
INLET FILTERS	1 EACH
MANHOLES TO BE ADJUSTED	1 EACH

SCHEDULE OF QUANTITIES (SOUTH SIDE)

SIDEWALK REMOVAL	460 SQ FT
P.C.C. SIDEWALK, 5 INCH, SPECIAL	524 SQ FT
PROTECTIVE COAT	69 SQ YD
CONCRETE PAVERS	38.5 SQ FT
BUS SHELTER	1 EACH
TRASH RECEPTACLES	1 EACH
FURNISH AND PLACE TOPSOIL, 4"	110 SQ YD
SODDING	110 SQ YD
FERTILIZER NUTRIENT	2 POUND
INLET FILTERS	1 EACH

ILLINOIS DEPARTMENT OF TRANSPORTATION

BUS SHELTER INSTALLATION PLAN
NORTHWEST AND SOUTHWEST CORNERS OF
DEVON AVENUE AND ARTHUR AVENUE



DATE: 12/1/06
DESIGNED BY: DJK
CHECKED BY: JRV

F.A.U. RTE.	SECTION	COUNTY	TOTAL SHEETS	SHEET NO.
05-00051-00-MS	COOK/DUPAGE		14	10
STA.		TO STA.		
FED. ROAD DIST. NO. 7 ILLINOIS FED. AID PROJECT M-8003658				

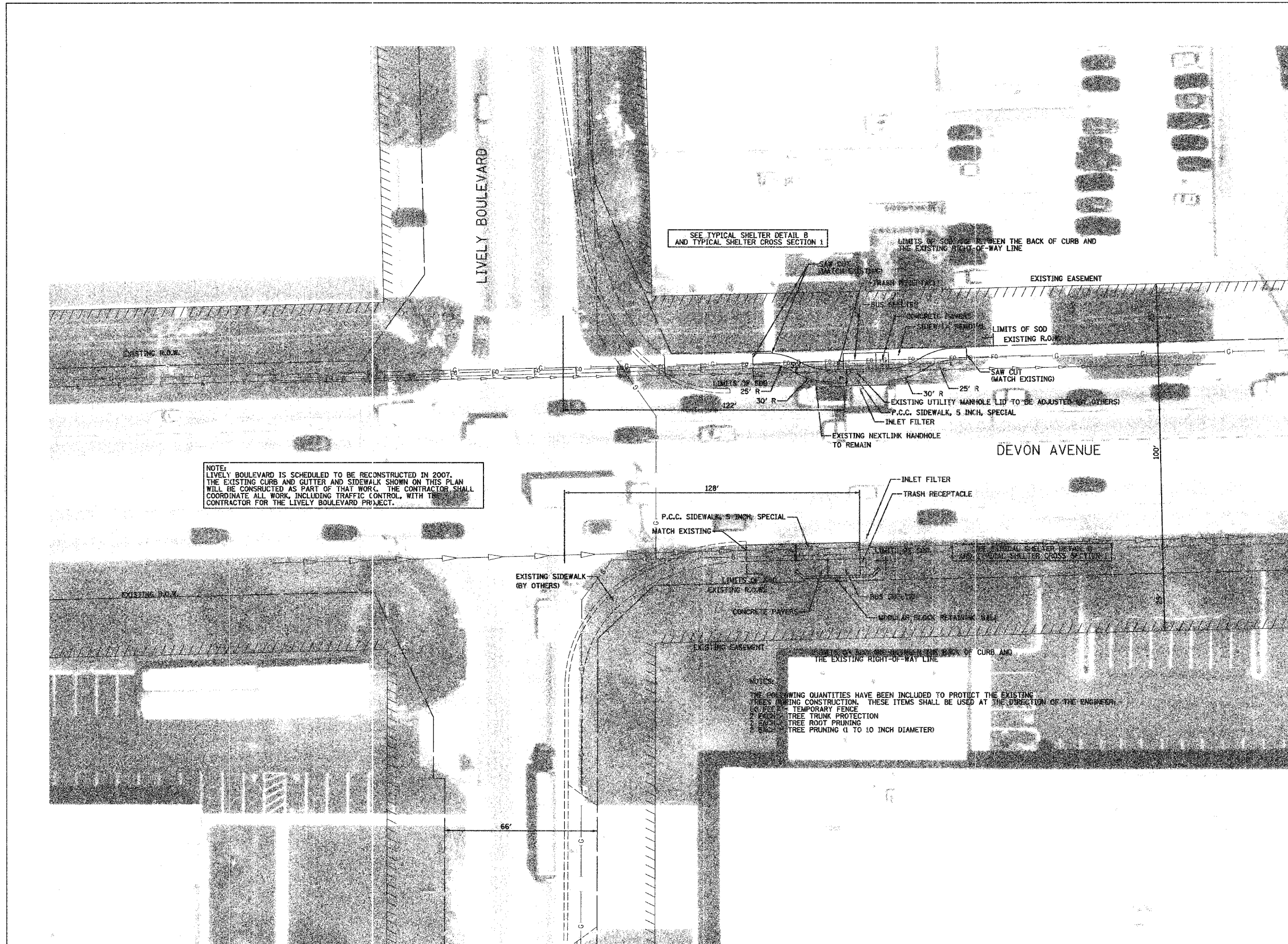


**SCHEDULE OF QUANTITIES
NORTH SIDE**

SIDEWALK REMOVAL	462 SQ FT
P.C.C. SIDEWALK, 5 INCH, SPECIAL	528 SQ FT
PROTECTIVE COAT	70 SQ YD
CONCRETE PAVERS	38.5 SQ FT
BUS SHELTER	1 EACH
TRASH RECEPTACLES	1 EACH
FURNISH AND PLACE TOPSOIL, 4"	90 SQ YD
SODDING	90 SQ YD
FERTILIZER NUTRIENT	1 POUND
INLET FILTERS	1 EACH

**SCHEDULE OF QUANTITIES
SOUTH SIDE**

P.C.C. SIDEWALK, 5 INCH, SPECIAL	343 SQ FT
PROTECTIVE COAT	49 SQ YD
CONCRETE PAVERS	38.5 SQ FT
BUS SHELTER	1 EACH
TRASH RECEPTACLES	1 EACH
FURNISH AND PLACE TOPSOIL, 4"	50 SQ YD
SODDING	50 SQ YD
FERTILIZER NUTRIENT	1 POUND
INLET FILTERS	1 EACH
MODULAR BLOCK RETAINING WALL	152 SQ FT



ILLINOIS DEPARTMENT OF TRANSPORTATION

BUS SHELTER INSTALLATION PLAN

NORTHEAST AND SOUTHEAST CORNER OF
DEVON AVENUE AND LIVELY BOULEVARD

HORIZ.: 20 0 20
SCALE IN FEET

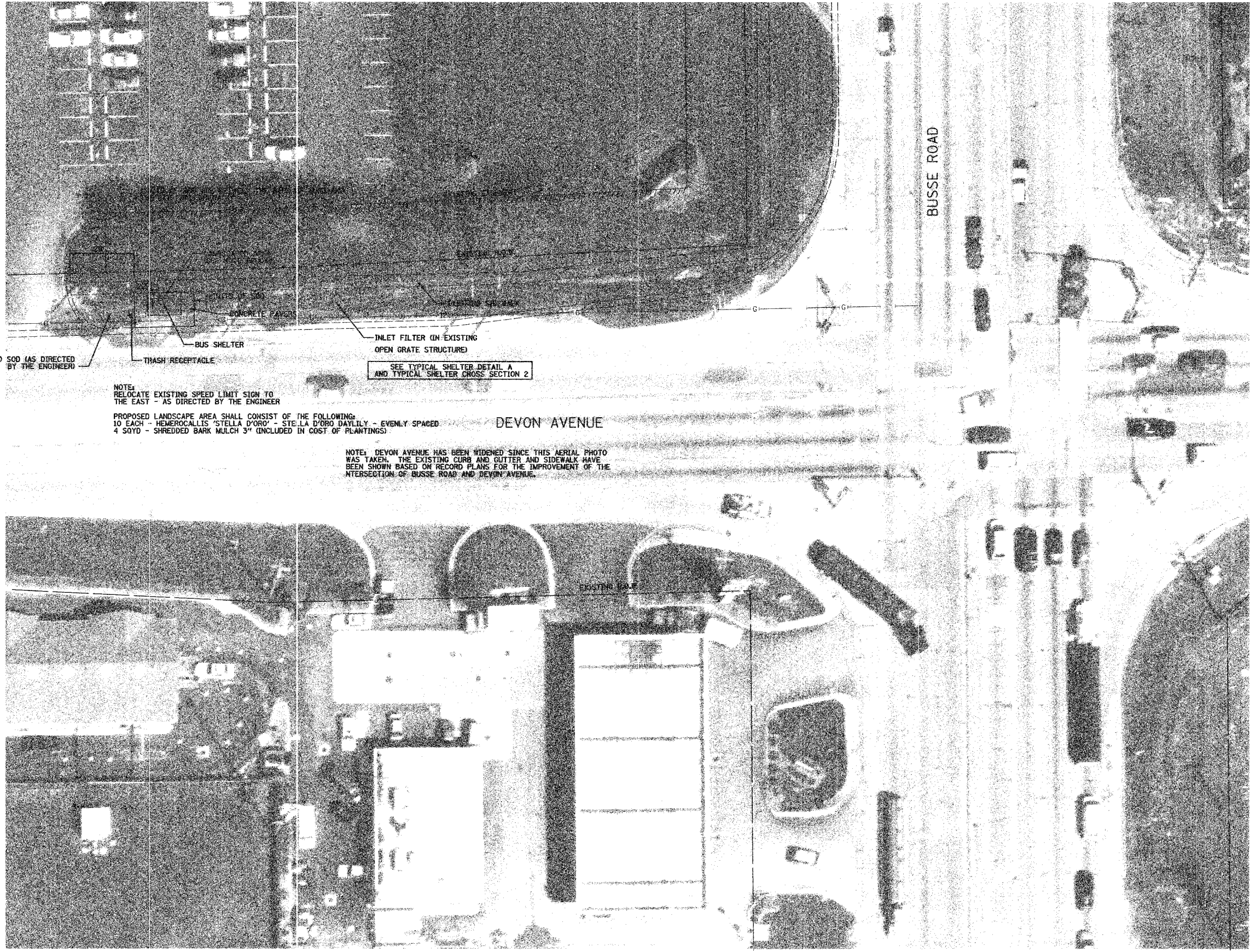
DATE: 12/1/06
DESIGNED BY: DJK
CHECKED BY: JRV

F.A.U. RTE.	SECTION	COUNTY	TOTAL SHEETS	SHEET NO.
	06-00051-00-MS	COOK/DUPAGE	14	11
STA.		TO STA.		
FED. ROAD DIST. NO. 7 ILLINOIS FED. AID PROJECT M-80036580				



SCHEDULE OF QUANTITIES

PROTECTIVE COAT	11 SQ YD
CONCRETE PAVERS	229 SQ FT
BUS SHELTER	1 EACH
TRASH RECEPTACLES	1 EACH
FURNISH AND PLACE TOPSOIL, 4"	44 SQ YD
SODDING	44 SQ YD
FERTILIZER NUTRIENT	1 POUND
INLET FILTERS	1 EACH
RELOCATE SIGN PANEL ASSEMBLY - TYPE A	1 EACH
TELESCOPING STEEL SIGN SUPPORT	15 FEET



ILLINOIS DEPARTMENT OF TRANSPORTATION

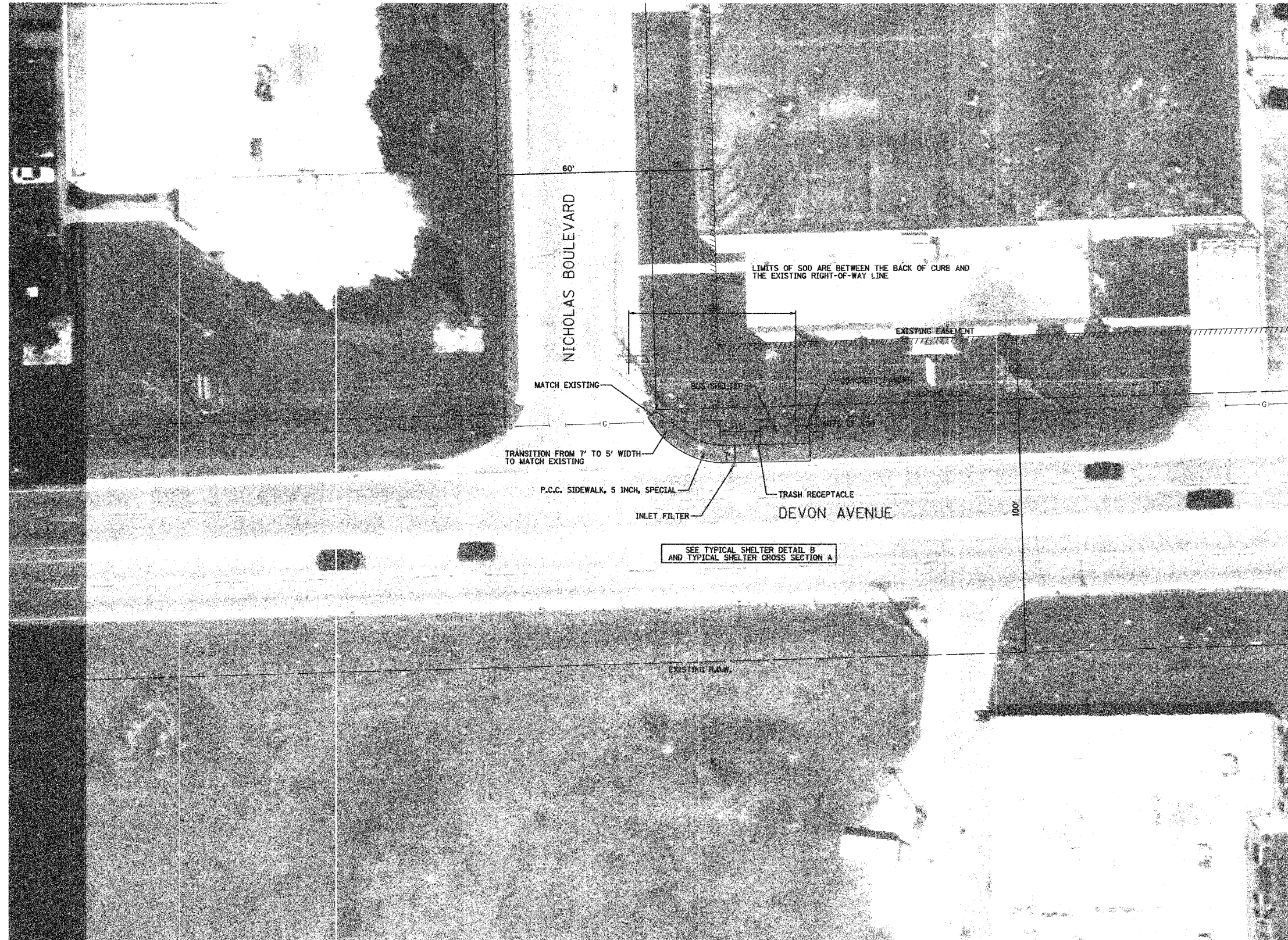
BUS SHELTER INSTALLATION PLAN

NORTHWEST CORNER OF
DEVON AVENUE AND BUSSE ROAD

HORIZ: 20 0 20
SCALE IN FEET

DATE: 12/1/06
DESIGNED BY: DJK
CHECKED BY: JRV

F.A.U. RTE.	SECTION	COUNTY	TOTAL SHEETS	SHEET NO.
06-00051-00-MS	COOK/DUPAGE		14	12
STA.		TO STA.		
FED. ROAD DIST. NO. 7		ILLINOIS FED. AID PROJECT M-8003658		



SCHEDULE OF QUANTITIES

P.C.C. SIDEWALK, 5 INCH, SPECIAL	463 SQ FT
PROTECTIVE COAT	63 SQ YD
CONCRETE PAVERS	38.5 SQ FT
BUS SHELTER	1 EACH
TRASH RECEPTACLES	1 EACH
FURNISH AND PLACE TOPSOIL, 4"	80 SQ YD
SODDING	80 SQ YD
FERTILIZER NUTRIENT	1 POUND
INLET FILTERS	1 EACH

SEE TYPICAL SHELTER DETAIL B AND TYPICAL SHELTER CROSS SECTION A

ILLINOIS DEPARTMENT OF TRANSPORTATION
BUS SHELTER INSTALLATION PLAN
 NORTHEAST CORNER OF
 DEVON AVENUE AND NICHOLAS BOULEVARD

HORIZ.: 20 0 20
 SCALE IN FEET
 DATE: 12/1/06
 DESIGNED BY: DJK
 CHECKED BY: JRV

F.A.U. RTE.	SECTION	COUNTY	TOTAL SHEETS	SHEET NO.
	06-00051-00-MS	COOK/DUPAGE	14	13
STA.		TO STA.		
FED. ROAD DIST. NO. 7 ILLINOIS FED. AID PROJECT M-60035440				

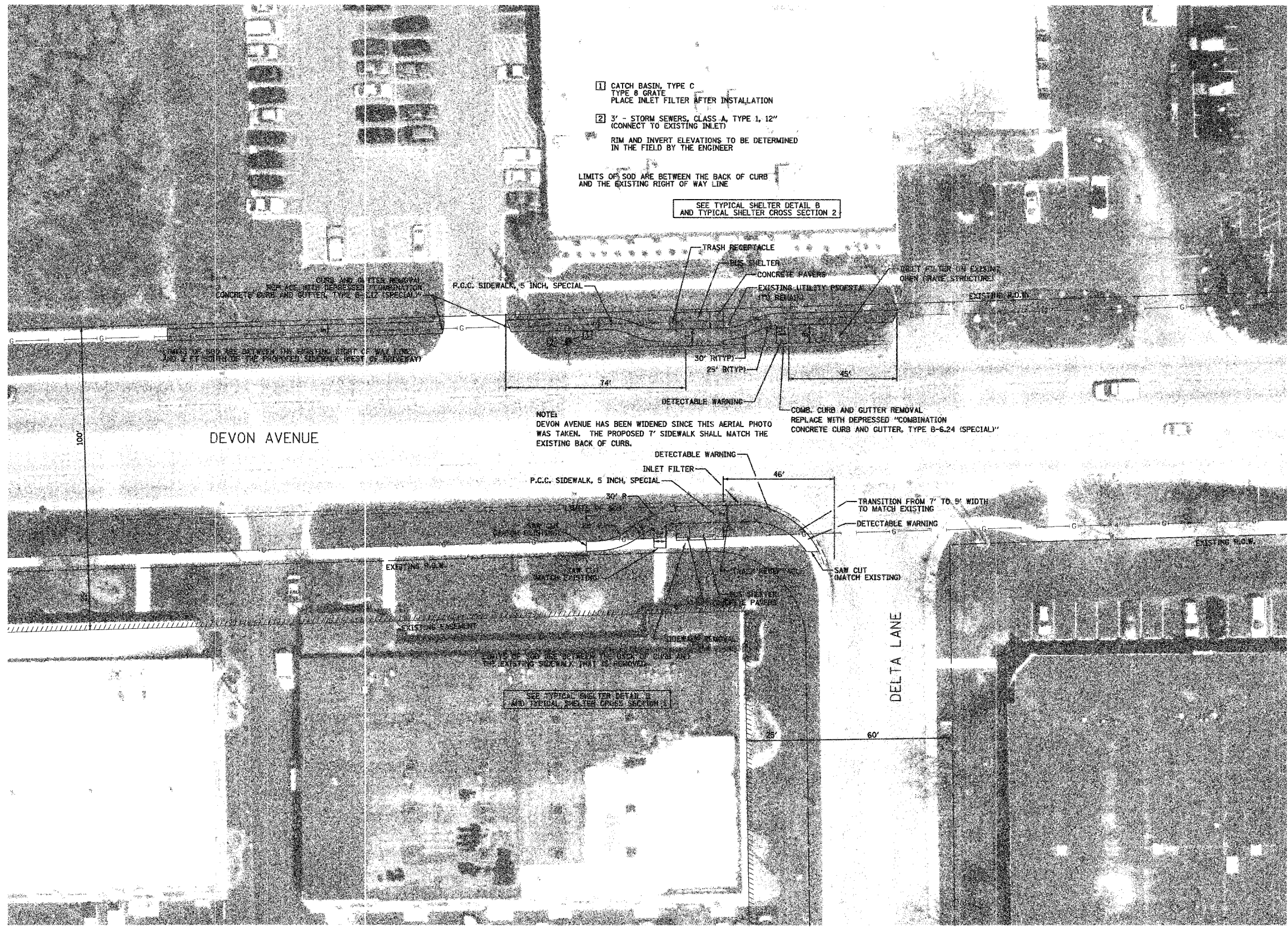


SCHEDULE OF QUANTITIES - NORTH SIDE

P.C.C. SIDEWALK, 5 INCH, SPECIAL	1,452 SQ FT
PROTECTIVE COAT	174 SQ YD
CONCRETE PAVERS	38.5 SQ FT
BUS SHELTER	1 EACH
TRASH RECEPTACLES	1 EACH
FURNISH AND PLACE TOPSOIL, 4"	222 SQ YD
SODDING	222 SQ YD
FERTILIZER NUTRIENT	3 POUND
INLET FILTERS	2 EACH
COMB. CURB AND GUTTER REMOVAL	27 FOOT
COMB. CONC. CURB AND GUTTER, TYPE B-6.12 (SPECIAL)	18 FOOT
COMB. CONC. CURB AND GUTTER, TYPE B-6.24 (SPECIAL)	9 FOOT
DETECTABLE WARNING	10 SQ FT
CATCH BASIN, TYPE C WITH TYPE B GRATE	1 EACH
STORM SEWERS, CLASS A, TYPE 1, 12"	3 FT

SCHEDULE OF QUANTITIES - SOUTH SIDE

SIDEWALK REMOVAL	374 SQ FT
P.C.C. SIDEWALK, 5 INCH, SPECIAL	602 SQ FT
PROTECTIVE COAT	80 SQ YD
CONCRETE PAVERS	38.5 SQ FT
BUS SHELTER	1 EACH
TRASH RECEPTACLES	1 EACH
FURNISH AND PLACE TOPSOIL, 4"	104 SQ YD
SODDING	104 SQ YD
FERTILIZER NUTRIENT	1 POUND
INLET FILTERS	1 EACH
DETECTABLE WARNING	20 SQ FT



ILLINOIS DEPARTMENT OF TRANSPORTATION

BUS SHELTER INSTALLATION PLAN

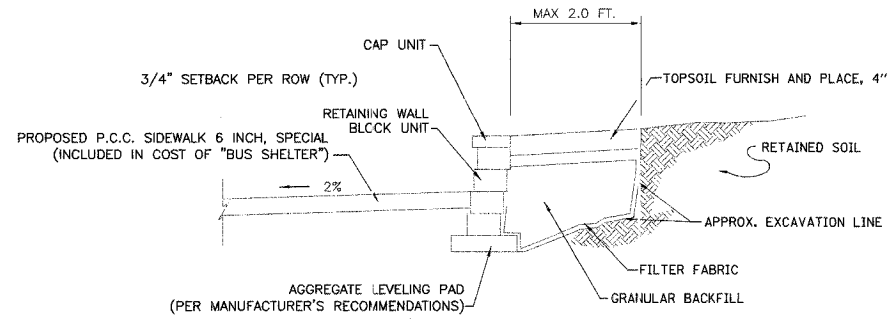
NORTHWEST AND SOUTHWEST CORNERS OF
DEVON AVENUE AND DELTA LANE

HORIZ: 20 0 20

SCALE IN FEET

DATE: 12/1/05
DESIGNED BY: DJK
CHECKED BY: JRV

F.A.U. RTE.	SECTION	COUNTY	TOTAL SHEETS	SHEET NO.
	06-00051-00-MS	COOK/DUPAGE	14	14
DETAILS				
FED. ROAD DIST. NO. 7 ILLINOIS FED. AID PROJECT M-80036581				



MODULAR BLOCK RETAINING WALL

NOT TO SCALE

1. PRIOR TO CONSTRUCTION OF THE RETAINING WALL, THE CONTRACTOR SHALL SUBMIT SHCP DRAWINGS.
2. ALL ITEMS SHOWN ABOVE ASSOCIATED WITH THE RETAINING WALL EXCEPT PROPOSED TOPSOIL SHALL BE INCLUDED IN THE PAY ITEM "MODULAR BLOCK RETAINING WALL".

ILLINOIS DEPARTMENT OF TRANSPORTATION

DETAILS

DATE: 12/1/06
DESIGNED BY: DJK
CHECKED BY: JRV