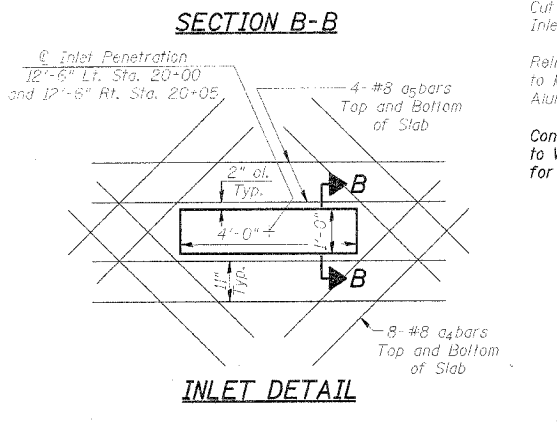
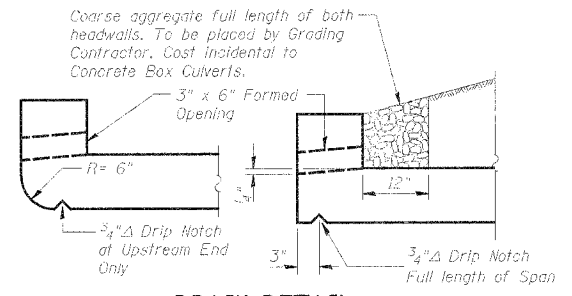
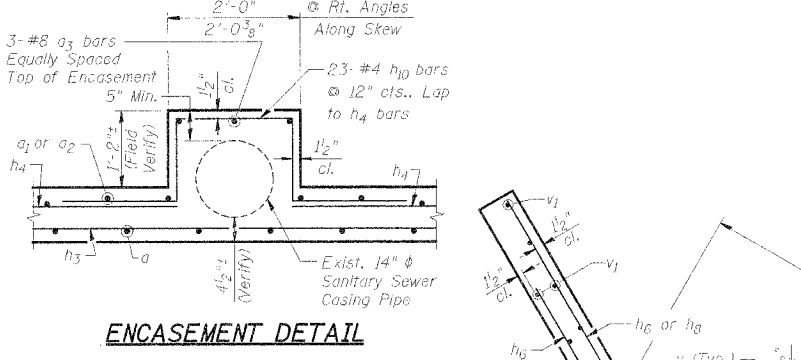
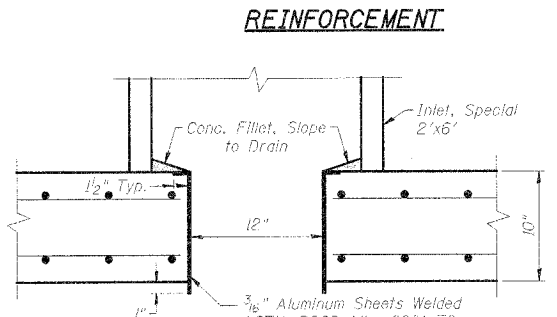
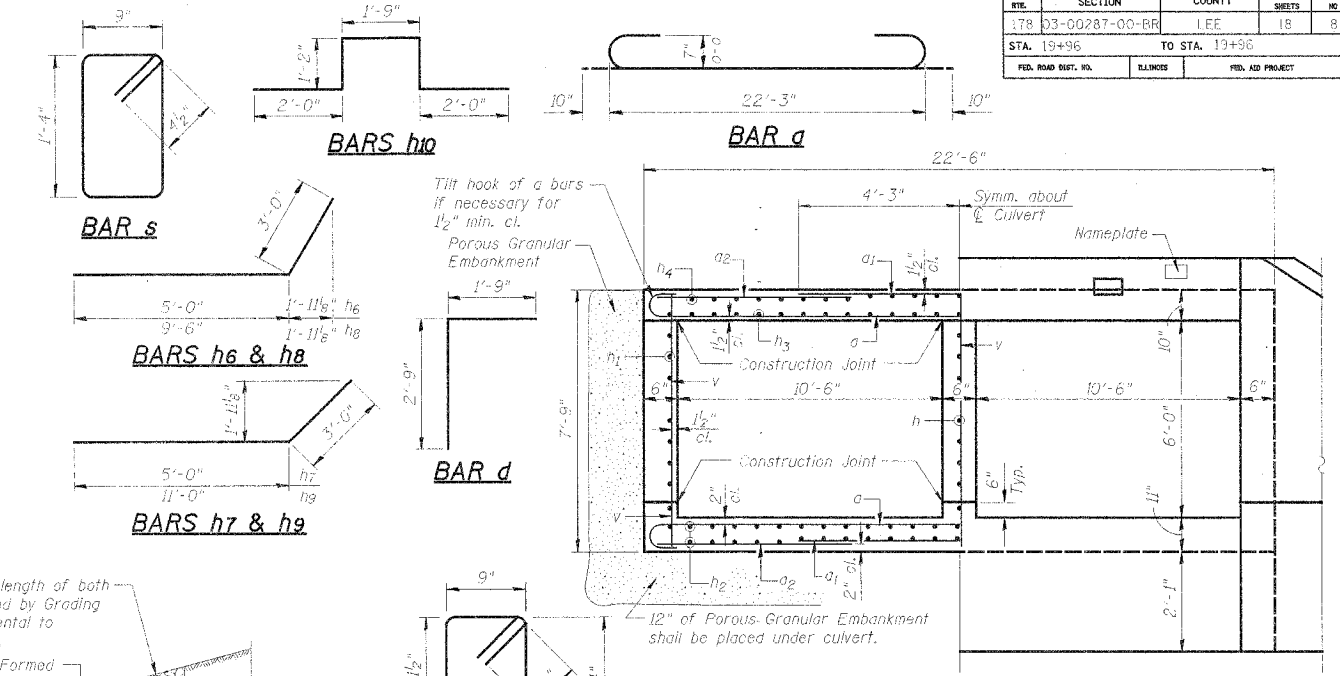
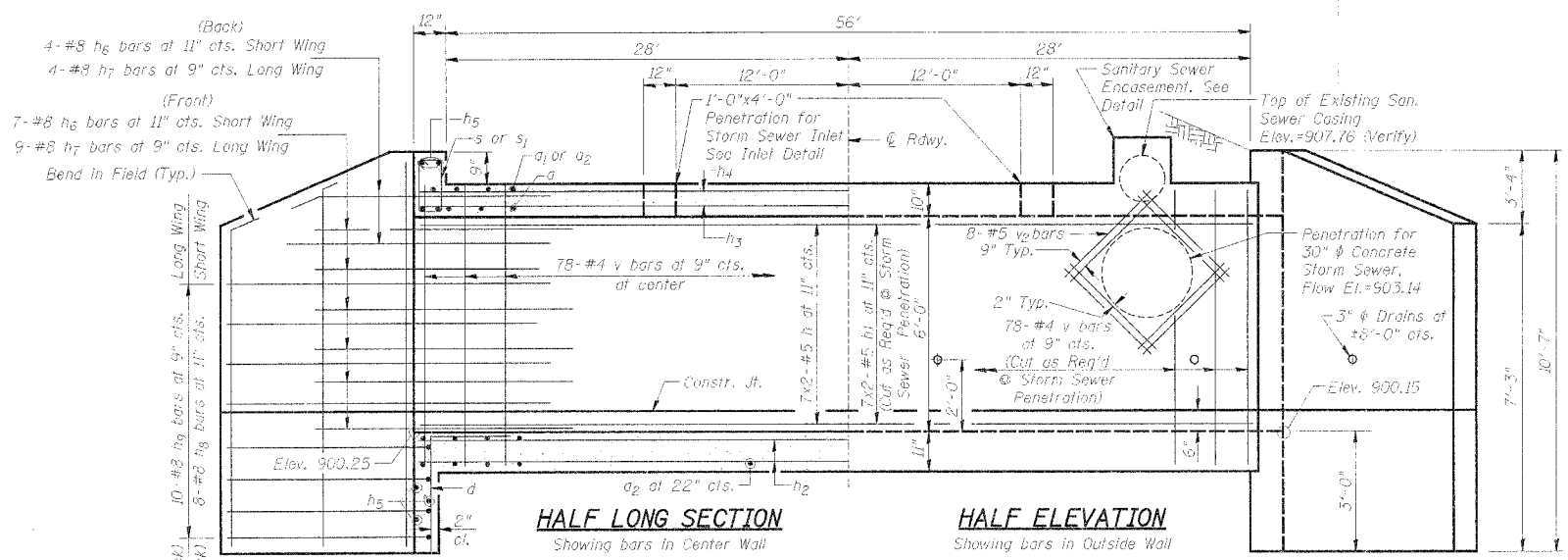
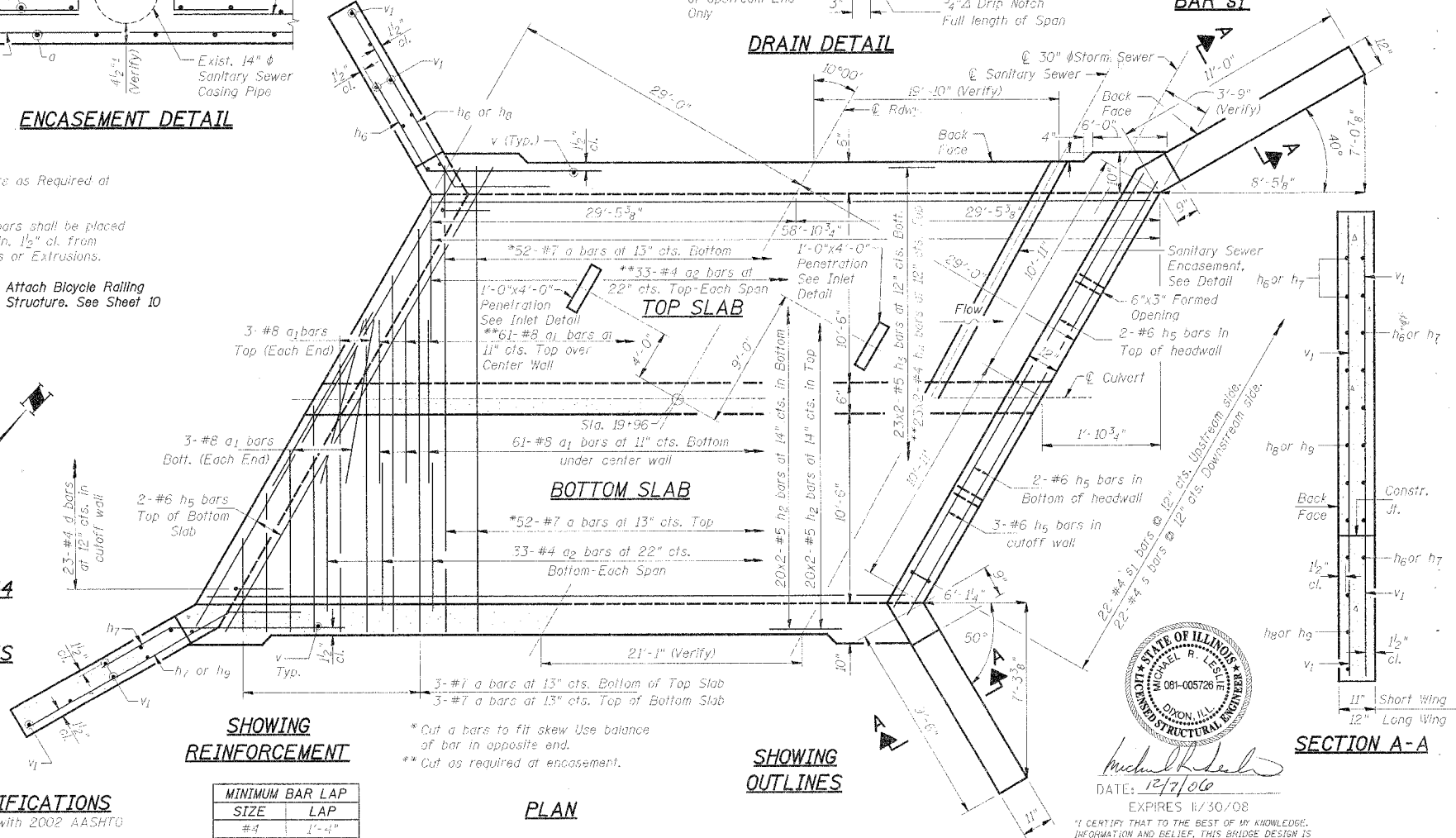


FILE NO.	SECTION	COUNTY	TOTAL SHEETS	SHEET NO.
178	03-00287-00-BR	LEE	18	8
STA. 19+96	TO STA. 19+96			
FED. ROAD DIST. NO.	BLANKS	FED. AID PROJECT		



Notes:
Cut a_1 & a_2 bars as Required at Inlet Locations.
Reinforcement bars shall be placed to maintain a min. $1\frac{1}{2}$ " cl. from Aluminum Sheets or Extrusions.
Contractor shall Attach Bicycle Railing to West Side of Structure. See Sheet 10 for Details.



BR. of FAW PAW RUN
BUILT 2007 BY
LEE COUNTY
SECTION 03-00287-00-BR
F.A.S. RT. 178 STATION 19+96
STR. NO. 052-6200 LOADING HS20

LOADING-HS20-44
Allow 50 psf Future Wearing Surface

DESIGN STRESSES
 $f_y = 60,000$ p.s.i.
 $f'_c = 3,500$ p.s.i.

DESIGN SPECIFICATIONS
Design in Accordance with 2002 AASHTO Specifications.

SIZE	LAP
#4	1'-4"
#5	1'-8"
#6	2'-0"

PLAN

NAME PLATE LETTERING
Refer to Sta. 515001

WATERWAY INFORMATION

DRAINAGE AREA	1,289 SQ. MI.
DESIGN DISCHARGE (30 YR.)	440 CFS
EXISTING OPENING	85 SQ. FT
REQUIRED OPENING	125 SQ. FT
PROPOSED OPENING	125 SQ. FT
CREATED HEAD (30 YR.)	<0.3 FT.
100 YR. DISCHARGE	590 CFS
CREATED HEAD (100 YR.)	<0.5 FT.
HIGH WATER ELEV. (100 YR.)	906.4 FT.

BILL OF MATERIAL

Bar	No.	Size	Length	Shape
a	110	#7	23'-11"	U
a ₁	128	#8	8'-6"	—
a ₂	132	#4	8'-3"	—
a ₃	3	#8	22'-6"	—
a ₄	32	#8	5'-0"	—
a ₅	16	#8	8'-0"	—
d	45	#4	4'-6"	L
h	14	#5	30'-2"	—
h ₁	28	#5	30'-2"	—
h ₂	80	#5	30'-2"	—
h ₃	46	#5	30'-2"	—
h ₄	46	#4	30'-0"	—
h ₅	18	#6	22'-0"	—
h ₆	22	#8	8'-0"	—
h ₇	26	#8	8'-0"	—
h ₈	16	#8	12'-6"	—
h ₉	20	#8	14'-0"	—
h ₁₀	23	#4	8'-1"	—
s	22	#4	4'-11"	U
s ₁	22	#4	4'-9"	U
v	238	#4	7'-6"	—
v ₁	32	#4	10'-3"	—
v ₂	8	#5	7'-0"	—
Concrete Box Culverts	Cu. Yds.	125.2		
Reinforcement Bars	Lbs.	20,950		
Name Plate	Each	1		
Porous Granular Embankment	Cu. Yds.	126		

Notes:
Class S1 concrete shall be used throughout.
Exposed edges shall be beveled $\frac{3}{4}$ ".
For backfill & embankment, See Special Provisions.
Reinforcement bars shall conform to the requirements of ASSHTO M-31, M-42, or M-53 Grade 60.
A min. of 6'-0" of barrel shall be poured monolithically with wing.
Bars indicated thus 20x2-#5 etc. indicates 20 lines of bar with 2 lengths per line.



DATE: 12/7/06
EXPIRES: 11/30/08

"I CERTIFY THAT TO THE BEST OF MY KNOWLEDGE, INFORMATION AND BELIEF, THIS BRIDGE DESIGN IS STRUCTURALLY ADEQUATE FOR THE DESIGN LOADING SHOWN ON THE PLANS. THE DESIGN IS AN ECONOMICAL ONE WHICH COMPLIES WITH REQUIREMENTS OF THE CURRENT AASHTO STANDARD SPECIFICATIONS FOR HIGHWAY BRIDGES."

CULVERT DETAILS
PERU STREET OVER BR. of PAW PAW RUN
SECTION 03-00287-00-BR
STA. 19+96 (S.N. 052-6200)
LEE COUNTY
WHA # 123JD03