

85349

ILLINOIS DEPARTMENT OF TRANSPORTATION
LUMINAIRE PERFORMANCE TABLE

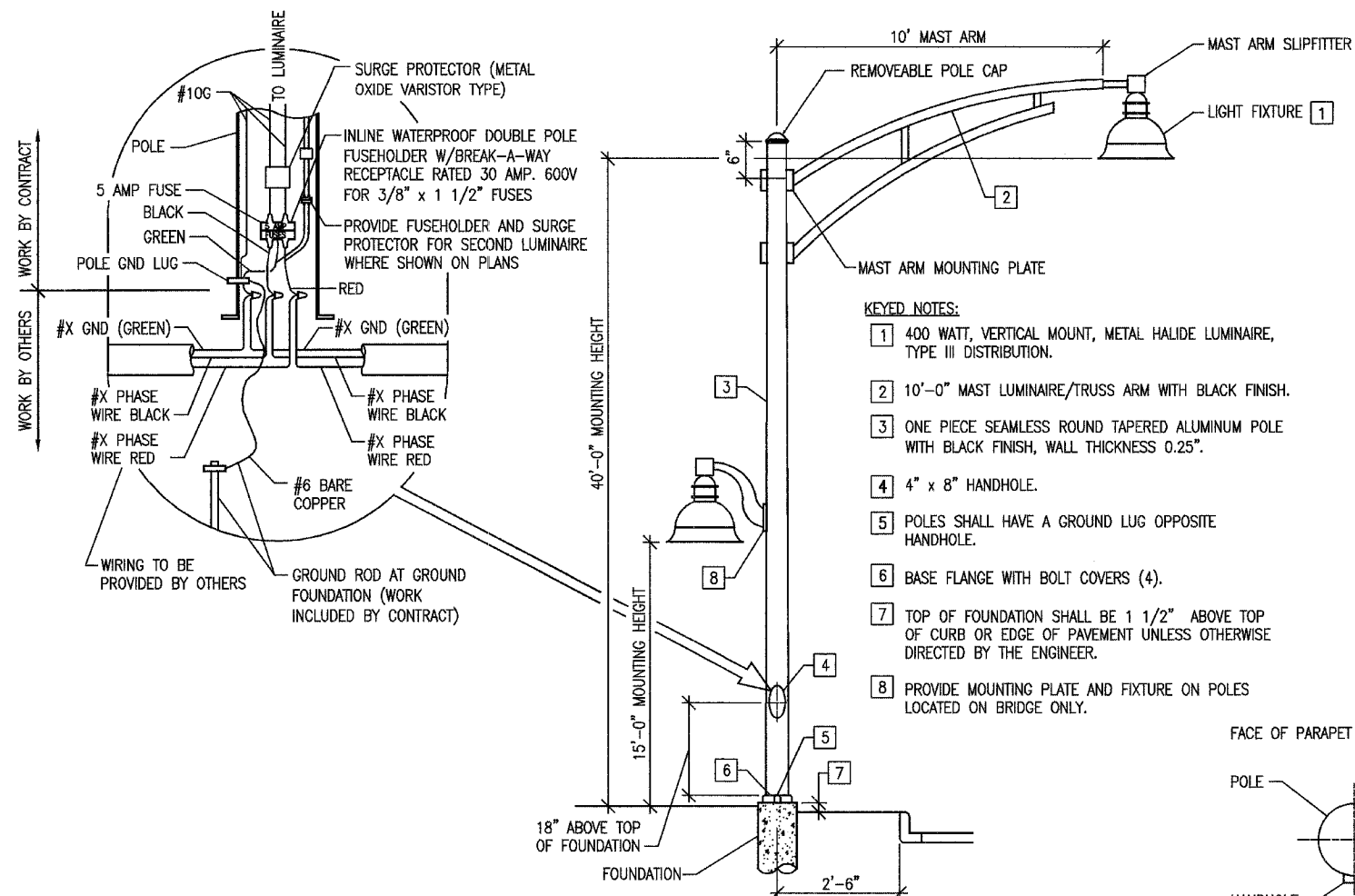
GIVEN CONDITIONS		
ROADWAY DATA:	PAVEMENT WIDTHS	66 FT
	NUMBER OF LANES	4
	MEDIAN WIDTH	18 FT
	IES SURFACE CLASSIFICATION	R3
	Q-ZERO VALUE	0.07
LIGHT POLE DATA:	MOUNTING HEIGHT	40 FT
	MAST ARM LENGTH	10 FT
	POLE SET-BACK FROM EDGE OF PAVEMENT	1.5 FT
LUMINAIRE DATA:	LAMP TYPE	400W CLEAR MH
	LAMP LUMENS	44,000
	IES VERTICAL DISTRIBUTION	MEDIUM
	IES CONTROL OF DISTRIBUTION	FULL CUTOFF
	IES LATERAL DISTRIBUTION	TYPE III
	TOTAL LIGHT LOSS FACTOR	0.525
LAYOUT DATA:	SPACING	200 FT
	CONFIGURATION	SINGLE HEAD POLE MOUNT
	LUMINAIRE OVERHANG OVER EDGE OF PAVEMENT LINE	8.5 FT

NOTE: VARIATIONS FROM THE ABOVE SPECIFIED IES DISTRIBUTION PATTERN MAY BE REQUESTED AND ACCEPTANCE OF VARIATIONS WILL BE SUBJECT TO REVIEW BY THE ENGINEER BASED ON HOW WELL THE PERFORMANCE REQUIREMENTS ARE MET.

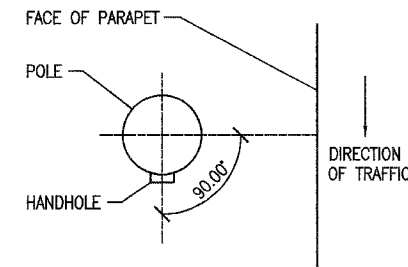
PERFORMANCE REQUIREMENTS

NOTE: THESE PERFORMANCE REQUIREMENTS SHALL BE THE MINIMUM ACCEPTABLE STANDARDS OF PHOTOMETRIC PERFORMANCE FOR THE LUMINAIRE, BASED ON THE GIVEN CONDITIONS LISTED ABOVE.

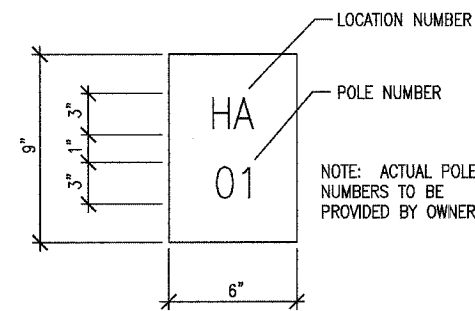
ILLUMINATION:	AVERAGE HORIZONTAL ILLUMINATION, (EAVE)	1.3 FC
	UNIFORMITY RATIO, (EAVE/EMIN)	3.2
LUMINANCE:	AVERAGE LUMINANCE: (LAVE)	1.2 Cd/m2
	UNIFORMITY RATIOS: (LAVE/LMIN)	2.0
	(LMAX/LMIN)	3.5
	MAXIMUM VEILING LUMINANCE RATIO: (LV/LAVE)	0.2



LIGHTING UNIT DETAIL
SCALE: NONE



HANDHOLE ORIENTATION DETAIL
SCALE: NONE



THE CONTRACTOR SHALL FURNISH AND INSTALL A LIGHT POLE IDENTIFICATION ON EACH NEW LIGHT POLE, AS SHOWN ABOVE, COST INCLUDED IN THE RESPECTIVE LIGHT POLE PAY ITEM. THE NUMERALS SHALL BE 3 IN. SERIES "D", BLACK, SCREENED ON SILVER-WHITE TYPE B PRESSURE SENSITIVE REFLECTIVE SHEETING CONFORMING TO THE REQUIREMENTS OF SECTION T602.01 OF THE STANDARD SPECIFICATIONS FOR TRAFFIC CONTROL ITEMS. THE NUMERALS SHALL CONFORM TO THE FHWA "STANDARD ALPHABETS FOR HIGHWAY SIGNS".

THE LIGHT POLE IDENTIFICATION SHALL BE APPLIED TO SIGN BASE MATERIAL AS SPECIFIED IN SECTION 1069.02 OF THE STANDARD SPECIFICATIONS, APPROXIMATELY 7 FT. ABOVE THE ADJACENT PAVEMENT GRADE VISIBLE TO APPROACHING TRAFFIC IN ACCORDANCE WITH HIGHWAY STANDARD 720001.

LIGHT POLE IDENTIFICATION DETAIL
SCALE: NONE

LIGHTING FIXTURE SCHEDULE						
FIXT. TYPE	DESCRIPTION	MANUFACTURER & CAT. NO.	LAMPS/WATTS	VOLTS	MOUNTING	REMARKS
F1	POLE MOUNTED DECORATIVE HEAD ROADWAY LUMINAIRE, HEAVY GAUGE ALUMINUM HOUSING, FULLY GASKETED FOR WEATHER AND BUG TIGHTNESS, BAKED ON BLACK POLYESTER POWDER COAT FINISH, ANODIZED ALUMINUM TYPE III FULL CUTOFF OPTICS, TEMPERED GLASS LENS, MEDIUM BASE PORCELAIN SOCKET, MAG. REG. TYPE BALLAST, UL LISTED WET LOCATIONS.	VISIONSCAPES: ODN-2T3400P6 MAP-01BKC2H5 OR APPROVED EQUAL	1-400W MH ANSI CODE NO. M59 456 TOTAL INPUT WATTS	480 (MULTI-TAP BALLAST)	MOUNTED AT TOP OF A 40'-0" POLE WITH A 10'-0" MAST ARM	
F2	POLE MOUNTED DECORATIVE HEAD WALKWAY LUMINAIRE, HEAVY GAUGE ALUMINUM HOUSING, FULLY GASKETED FOR WEATHER AND BUG TIGHTNESS, BAKED ON BLACK POLYESTER POWDER COAT FINISH, ANODIZED ALUMINUM TYPE II FULL CUTOFF OPTICS, TEMPERED GLASS LENS, MEDIUM BASE PORCELAIN SOCKET, MAG. REG. TYPE BALLAST, UL LISTED WET LOCATIONS.	VISIONSCAPES: ODN-1T2150P6 PMBKC2H5/VSWA8 OR APPROVED EQUAL	1-150W MH ANSI CODE NO. M81 193 TOTAL INPUT WATTS	480 (MULTI-TAP BALLAST)	MOUNTED ON SIDE OF ROADWAY POLE WITH DECORATIVE ARM	

revised
2/15/07

Corporate License Number 184-001-084

LIGHTING DETAILS

HARRISON AVENUE BRIDGE
OVER UP & CC&P RAILROAD
F.A.P. ROUTE 0525
SECTION 02-00518-00-BR
ROCKFORD, ILLINOIS
WESTBOUND STRUCTURE NO. 101-6109
EASTBOUND STRUCTURE NO. 101-6111

L3



03R1751
DATE 07/18/06

06/14/06 P.J.T. 07/14/06
 06/14/06 A.N.C. 07/14/06
 06/14/06 R.V.S. 07/14/06
 06/14/06 P.J.T. 07/14/06