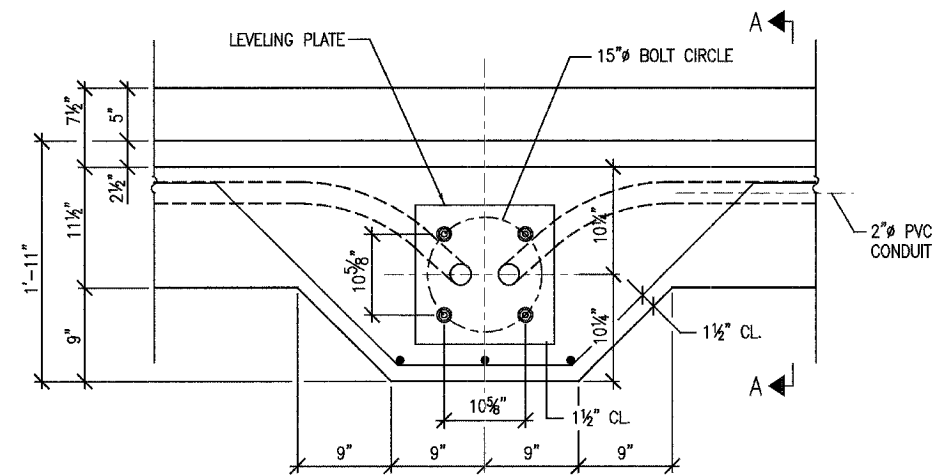
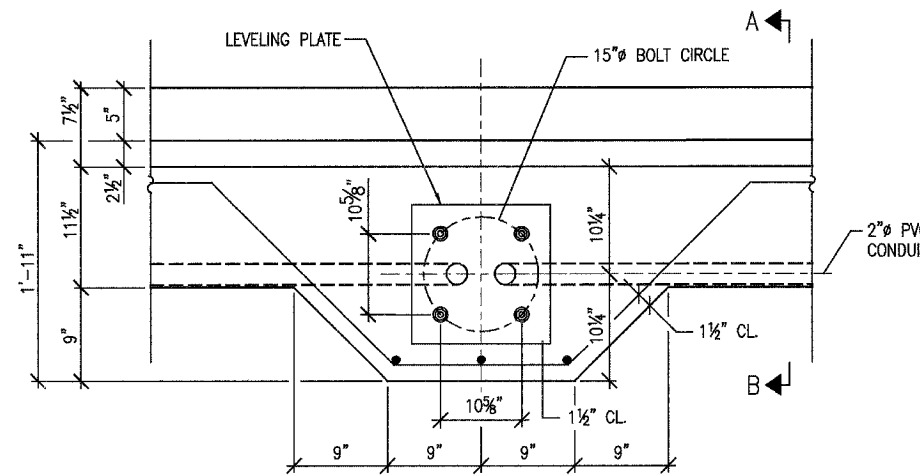


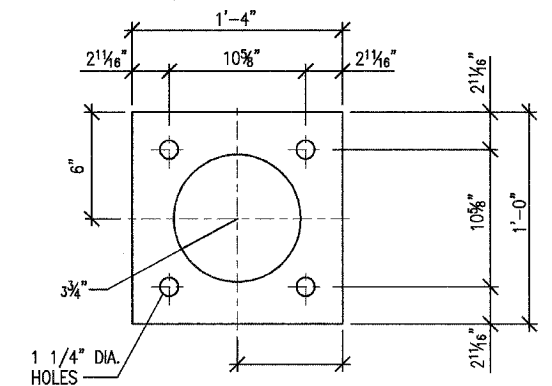
ROUTE NO.	SECTION	COUNTY	SHEET	SHEET	SHEET NO.
FAP 0525		WINNEBAGO	157	38	5 SHEETS
FED. ROAD DIST. NO. 7		ILLINOIS		FED. AID PROJECT	
		02-00518-00-BR		85399	



PLAN



PLAN

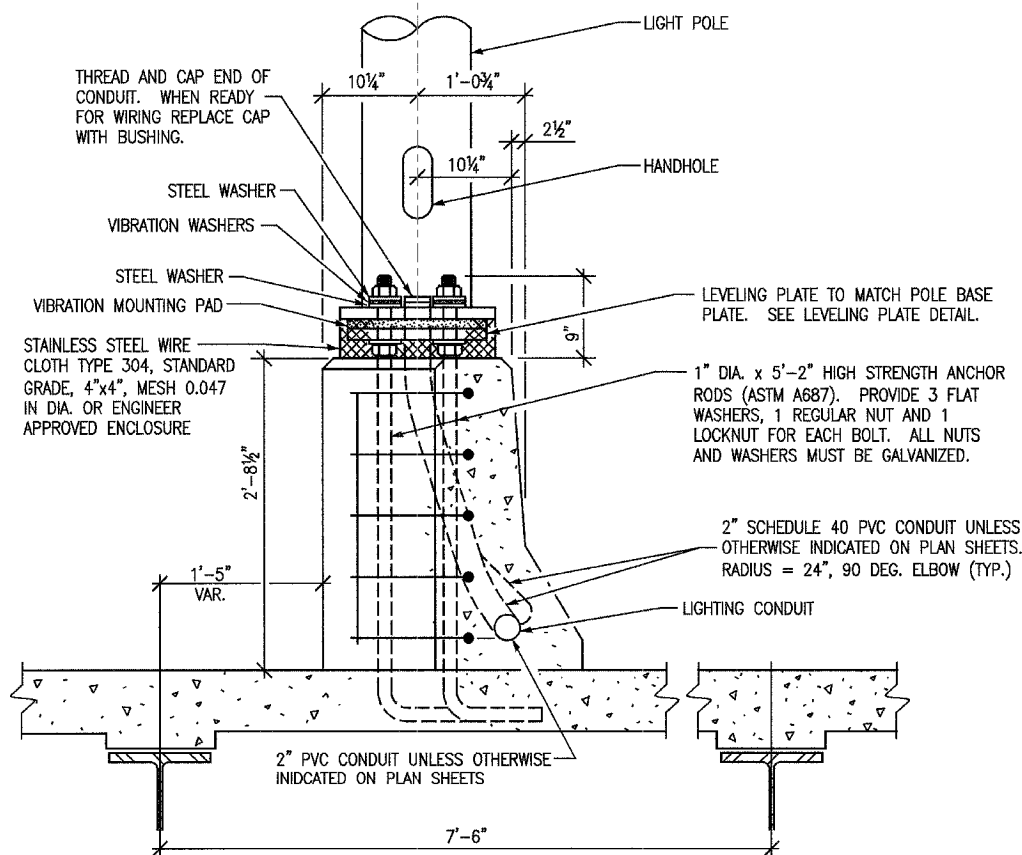


LEVELING PLATE DETAIL
SCALE: NONE

GENERAL NOTES:

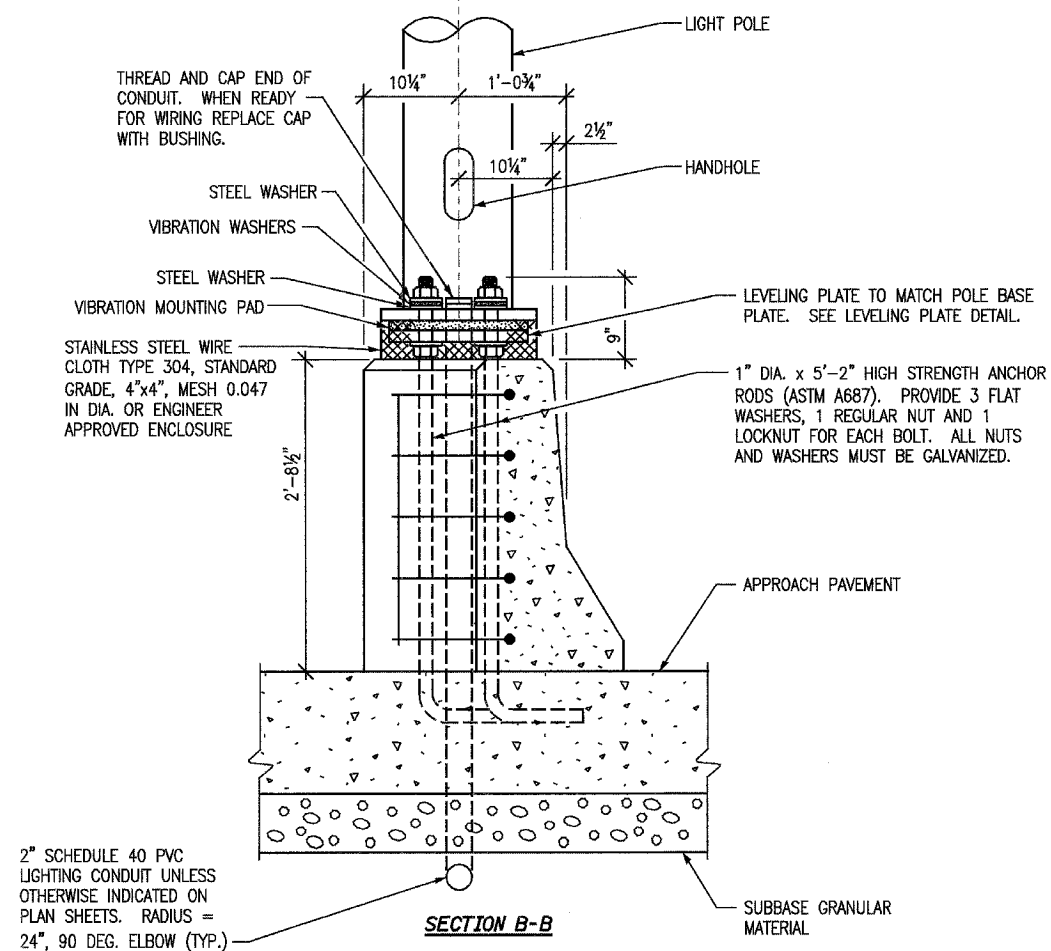
1. THE COST OF ANCHOR BOLTS AND FOUNDATION ON BRIDGE IS INCLUDED WITH BRIDGE SUPERSTRUCTURE.
2. 2" NON METALLIC FLEXIBLE CONDUIT SHALL BE 24" (MIN.) IN LENGTH. IT SHALL HAVE SUFFICIENT SLACK TO ALLOW DEFLECTION AND EXPANSION.
3. ALL JUNCTION BOXES AND PULL BOXES ATTACHED TO THE STRUCTURE SHALL BE STAINLESS STEEL NEMA 4X (PER ARTICLE 1088.04), SIZE AS SPECIFIED. THE DOOR SHALL HAVE A STAINLESS STEEL CONTINUOUS HINGE PIN AND CLAMP ASSEMBLY.
4. THE CONTRACTOR SHALL NOT DRILL ANY HOLES IN THE BEAM, DECK OR SUPERSTRUCTURE OF THE BRIDGE OR WELD TO THE STRUCTURE UNLESS OTHERWISE SPECIFIED.
5. CONDUIT SHALL EXIT PARAPET IN LONGITUDINAL STRAIGHT LINE.
6. ALL JUNCTION BOXES SHALL HAVE A 1" WIRE MESH DRAIN IN THE BOTTOM.
7. THE COST OF ANCHOR BOLTS AND FOUNDATION ON APPROACH PAVEMENT IS INCLUDED WITH BRIDGE SUPERSTRUCTURE.

Revised 2/15/07



SECTION A-A

LIGHT POLE ON PARAPET (BRIDGE)
SCALE: NONE



SECTION B-B

LIGHT POLE ON PARAPET (APPROACH PAVEMENT)
SCALE: NONE

8:30:04 PM
 06/16/07 08:30 PM
 J:\03\06\03\07\5\Struct\Lighting\Drawings 2-12-07-E-502.dgn

LAYOUT	PJT	07/14/06
DRAWN	AKC	07/14/06
REVIEWED	PJT	07/14/06

Corporate License Number 184-001-084

BRIDGE PARAPET/LIGHTING DETAILS

HARRISON AVENUE BRIDGE
 OVER UP & CC&P RAILROAD
 F.A.P. ROUTE 0525
 SECTION 02-00518-00-BR
 ROCKFORD, ILLINOIS
 WESTBOUND STRUCTURE NO. 101-6109
 EASTBOUND STRUCTURE NO. 101-6111

© Copyright Hanson Professional Services Inc. 2005



03R1751
 DATE
 07/18/06

L4