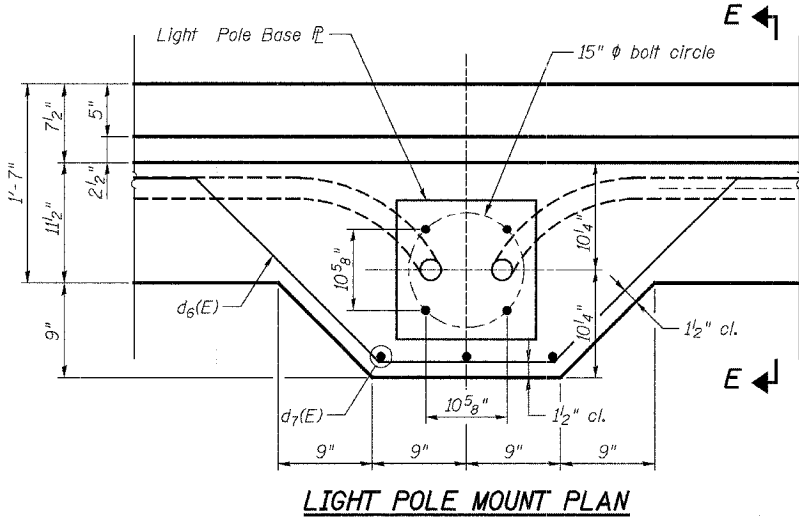


SUPERSTRUCTURE BILL OF MATERIAL

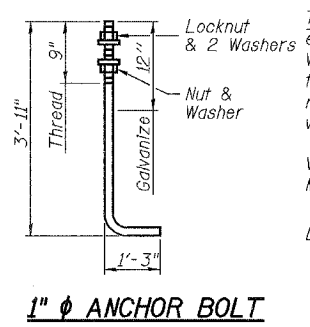
Bar	No.	Size	Length	Shape
a(E)	38	#5	35'-9"	—
a ₁ (E)	39	#5	37'-9"	—
a ₂ (E)	27	#5	35'-8"	—
a ₃ (E)	27	#5	37'-4"	—
a ₄ (E)	4	#5	28'-2"	—
a ₅ (E)	4	#5	27'-3"	—
a ₆ (E)	1289	#5	36'-3"	—
a ₇ (E)	417	#6	4'-6"	—
b(E)	507	#5	34'-2"	—
b ₁ (E)	74	#6	28'-7"	—
b ₂ (E)	148	#6	25'-3"	—
b ₃ (E)	74	#6	31'-10"	—
b ₄ (E)	532	#5	31'-11"	—
d(E)	455	#5	3'-8"	—
d ₁ (E)	455	#5	2'-5"	—
d ₂ (E)	455	#4	3'-8"	—
d ₃ (E)	455	#4	3'-11"	—
d ₄ (E)	200	#4	2'-1"	—
d ₅ (E)	455	#4	4'-5"	—
d ₆ (E)	15	#6	9'-4"	—
d ₇ (E)	9	#6	4'-6"	—
e(E)	12	#4	15'-10"	—
e ₁ (E)	42	#4	13'-8"	—
e ₂ (E)	28	#4	14'-6"	—
e ₃ (E)	56	#4	18'-5"	—
e ₄ (E)	28	#4	13'-1"	—
e ₅ (E)	14	#4	15'-5"	—
e ₆ (E)	14	#4	16'-3"	—
e ₇ (E)	28	#4	12'-3"	—
e ₈ (E)	56	#4	18'-0"	—
e ₉ (E)	28	#4	16'-1"	—
e ₁₀ (E)	70	#4	15'-11"	—
x(E)	78	#5	4'-1"	—

Bar	No.	Size	Length	Shape
e ₁₁ (E)	2	#8	32'-0"	—
e ₁₂ (E)	4	#8	41'-6"	—
e ₁₃ (E)	8	#8	14'-6"	—
e ₁₄ (E)	12	#8	27'-4"	—
e ₁₅ (E)	8	#8	13'-1"	—
e ₁₆ (E)	4	#8	15'-5"	—
e ₁₇ (E)	4	#8	16'-3"	—
e ₁₈ (E)	8	#8	12'-3"	—
e ₁₉ (E)	12	#8	26'-9"	—
e ₂₀ (E)	8	#8	16'-1"	—
e ₂₁ (E)	12	#8	29'-6"	—
e ₂₂ (E)	2	#5	30'-6"	—
e ₂₃ (E)	2	#5	40'-0"	—
e ₂₄ (E)	8	#5	14'-6"	—
e ₂₅ (E)	12	#5	26'-0"	—
e ₂₆ (E)	8	#5	13'-1"	—
e ₂₇ (E)	4	#5	15'-5"	—
e ₂₈ (E)	4	#5	16'-3"	—
e ₂₉ (E)	8	#5	12'-3"	—
e ₃₀ (E)	12	#5	25'-5"	—
e ₃₁ (E)	8	#5	16'-1"	—
e ₃₂ (E)	6	#5	27'-7"	—
e ₃₃ (E)	6	#5	28'-1"	—
e ₃₄ (E)	2	#5	41'-6"	—
e ₃₅ (E)	12	#4	16'-4"	—
e ₃₆ (E)	2	#8	32'-11"	—
e ₃₇ (E)	2	#5	31'-5"	—
x(E)	78	#5	4'-1"	—

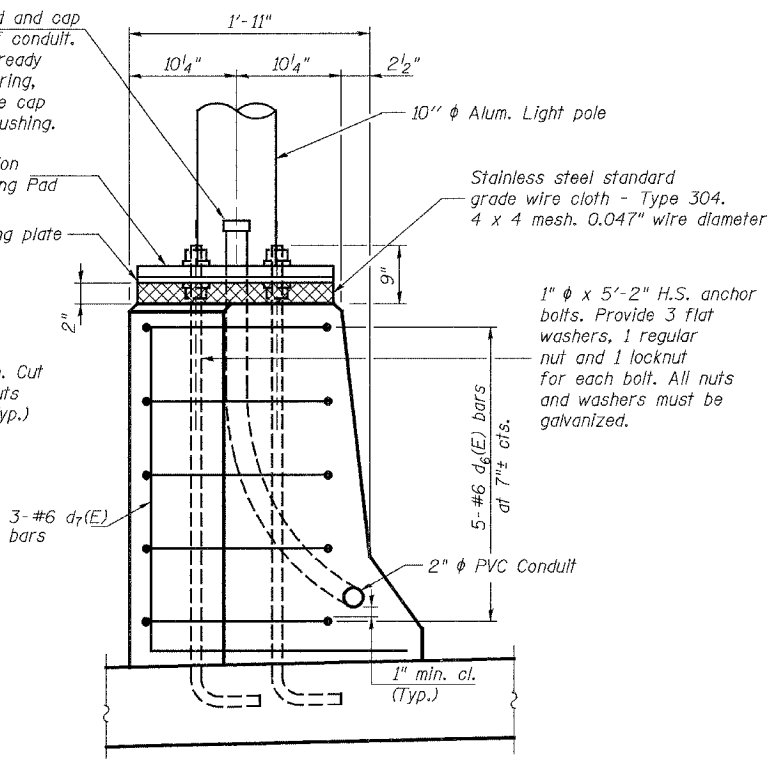
Reinforcement Bars, Epoxy Coated	Pound	123,290
Concrete Superstructure	Cu. Yds.	513.1
Bridge Deck Grooving	Sq. Yds.	1205
Protective Coat	Sq. Yds.	2381
Floor Drains	Each	5



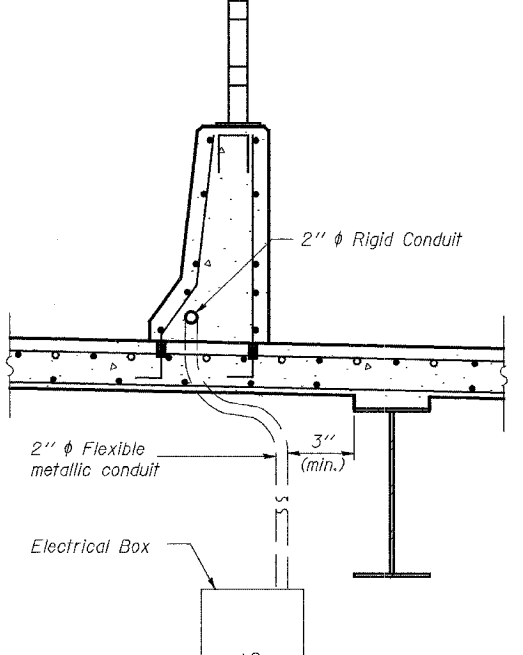
LIGHT POLE MOUNT PLAN



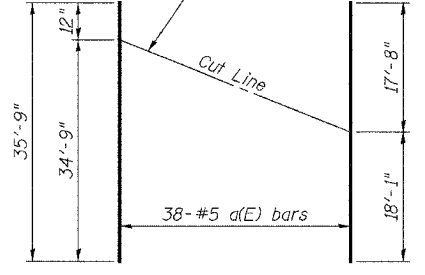
1" ANCHOR BOLT



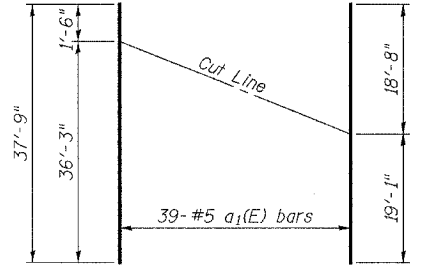
SECTION E-E



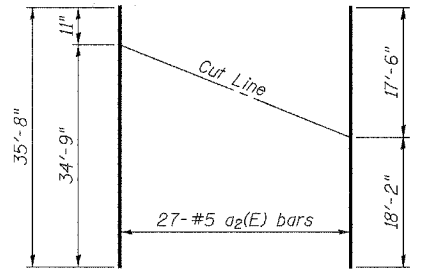
ELECTRICAL BOX - CONDUIT DETAILS



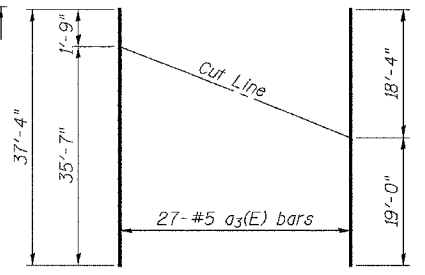
BAR a(E) CUTTING DIAGRAM 1



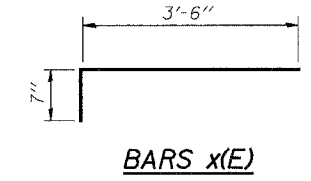
BAR a₁(E) CUTTING DIAGRAM 2



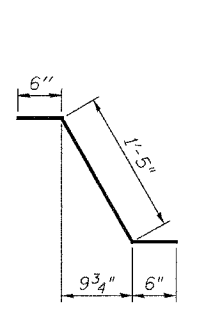
BAR a₂(E) CUTTING DIAGRAM 3



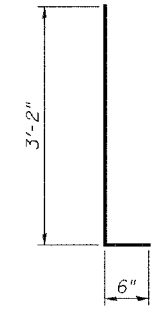
BAR a₃(E) CUTTING DIAGRAM 4



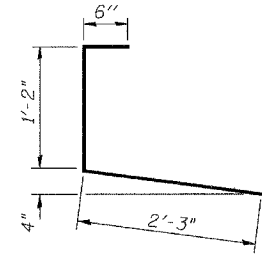
BARS x(E)



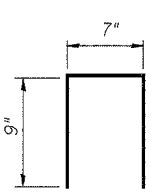
BAR d₁(E)



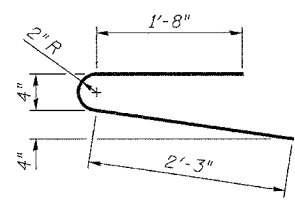
BARS d(E) & d₂(E)



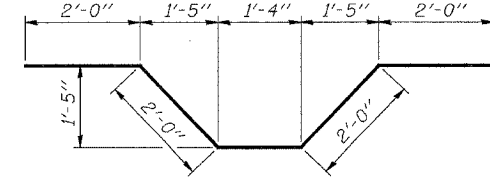
BAR d₃(E)



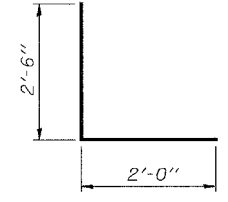
BARS d₄(E)



BAR d₅(E)



BAR d₆(E)



BAR d₇(E)

NOTES

Work this sheet with Sheets 10 thru 15 of 50. Bar indicated thus 20x3-#5 etc. indicates 20 lines of bars with 3 lengths per line. For light pole spacing see Sheet 13 of 50. Reinforcement bars designated (E) shall be epoxy coated. Cost of anchor bolts is included with Concrete Superstructure. Conduit shall not be placed in parapet until reinforcement is set.

revised 2/15/07

Corporate License Number 184-001-084

SUPERSTRUCTURE DETAILS

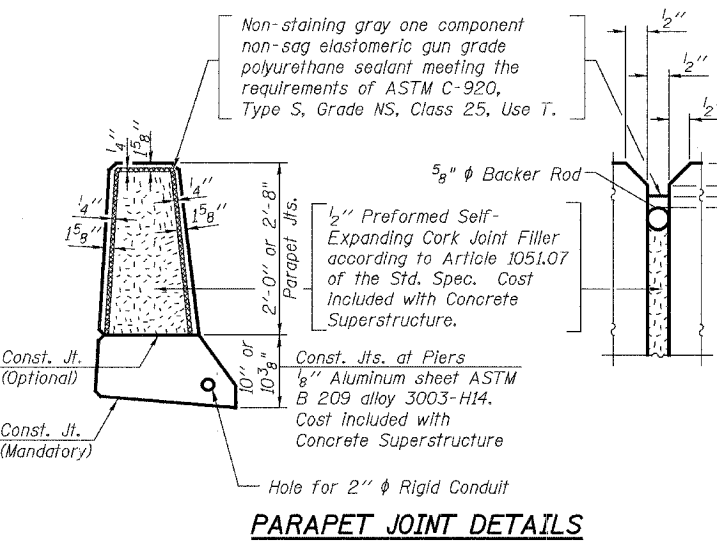
**WESTBOUND HARRISON AVENUE
OVER UP & CC&P RAILROAD
F.A.P. ROUTE 0525
SECTION 02-00518-00-BR
ROCKFORD, ILLINOIS
STATION 95+25.35
STRUCTURE NO. 101-6109**

© Copyright Hanson Professional Services Inc. 2006



JOB NO.
03R1751
DATE
12/14/06

20:400 PM 04/26/06
 02:VE:0207:0204 PM
 04/26/06 07:12/06
 08/02/06
 LAYOUT
 DRAWN
 CHECKED
 REVIEWED
 DATE
 04/26/06
 07/12/06
 08/02/06



PARAPET JOINT DETAILS