

SUMMARY OF QUANTITIES
CONSTRUCTION TYPE CODE X140-2A

F.A.P. RTE.	SECTION	COUNTY	TOTAL SHEETS	SHEET NO.
525	02-00518-00-BR	WINNEBAGO	157	2
STA.		TO STA.		
FED. ROAD DIST. NO.		ILLINOIS FED. AID PROJECT		

CODED PAY ITEM NUMBER	ITEM DESCRIPTION	UNIT	TOTAL QUANTITY
20100110	TREE REMOVAL (6 TO 15 UNITS DIAMETER)	UNIT	250
20100500	TREE REMOVAL	ACRE	2
20400100	BORROW EXCAVATION	CU YD	4,946
20700220	POROUS GRANULAR EMBANKMENT	CU YD	420
20800150	TRENCH BACKFILL	CU YD	402
21101615	TOPSOIL FURNISH AND PLACE, 4"	SQ YD	14,800
25000100	SEEDING, CLASS 1	ACRE	1.1
25000200	SEEDING, CLASS 2	ACRE	2
25000400	NITROGEN FERTILIZER NUTRIENT	POUND	279
25000500	PHOSPHOROUS FERTILIZER NUTRIENT	POUND	279
25000600	POTASSIUM FERTILIZER NUTRIENT	POUND	279
25100630	EROSION CONTROL BLANKET	SQ YD	5,793
28000250	TEMPORARY EROSION CONTROL SEEDING	POUND	150
28000300	TEMPORARY DITCH CHECKS	EACH	1
28000400	PERIMETER EROSION BARRIER	FOOT	1,500
28000500	INLET AND PIPE PROTECTION	EACH	14
31100700	SUB-BASE GRANULAR MATERIAL, TYPE A 8"	SQ YD	6,206
31101200	SUB-BASE GRANULAR MATERIAL, TYPE B 4"	SQ YD	6,206
35101400	AGGREGATE BASE COURSE, TYPE B	TON	212
35101600	AGGREGATE BASE COURSE, TYPE B 4"	SQ YD	423
35200600	EARTH EXCAVATION	CU YD	7,118
40201000	AGGREGATE FOR TEMPORARY ACCESS	TON	161
40600100	BITUMINOUS MATERIALS (PRIME COAT)	GALLON	374
40600990	TEMPORARY RAMP	SQ YD	28
42001165	BRIDGE APPROACH PAVEMENT	SQ YD	228
42300200	PORTLAND CEMENT CONCRETE DRIVEWAY PAVEMENT, 6 INCH	SQ YD	228
42400100	PORTLAND CEMENT CONCRETE SIDEWALK 4 INCH	SQ FT	3,804
42400800	DETECTABLE WARNINGS	SQ FT	35
44000100	PAVEMENT REMOVAL	SQ YD	5,588
44000200	DRIVEWAY PAVEMENT REMOVAL	SQ YD	434
44000500	COMBINATION CURB AND GUTTER REMOVAL	FOOT	5,151
44000600	SIDEWALK REMOVAL	SQ FT	3,118
44003100	MEDIAN REMOVAL	SQ FT	20,035
* 50100300	REMOVAL OF EXISTING STRUCTURES NO. 1	EACH	1
* 50100400	REMOVAL OF EXISTING STRUCTURES NO. 2	EACH	1
50104650	SLOPE WALL REMOVAL	SQ YD	305
* 50157300	PROTECTIVE SHIELD	SQ YD	2,153
50200100	STRUCTURE EXCAVATION	CU YD	3,908
50300100	FLOOR DRAINS	EACH	8
50300225	CONCRETE STRUCTURES	CU YD	1,769.6
50300255	CONCRETE SUPERSTRUCTURE	CU YD	1,097.2
50300260	BRIDGE DECK GROOVING	SQ YD	2,410
50300280	CONCRETE ENCASEMENT	CU YD	16.3
50300300	PROTECTIVE COAT	SQ YD	5,141
50500505	STUD SHEAR CONNECTORS	EACH	10,472
50800205	REINFORCEMENT BARS, EPOXY COATED	POUND	507,220
50800515	BAR SPLICERS	EACH	2,262
* 50900805	PEDESTRIAN RAILING	FOOT	878
* 50901735	BRIDGE FENCE RAILING (SIDEWALK)	FOOT	884
* 50901750	PARAPET RAILING	FOOT	950
* 51100500	BITUMINOUS COATED AGGREGATE SLOPEWALL 6"	SQ YD	1,610
51201600	FURNISHING STEEL PILES, HP 12X53	FOOT	5,302
51202305	DRIVING PILES	FOOT	5,302
51203600	TEST PILE STEEL, HP 12X53	EACH	12
51204650	PILE SHOES	EACH	210
51500100	NAME PLATES	EACH	2
52000340	NEOPRENE EXPANSION JOINT, 4"	FOOT	235
52100010	ELASTOMERIC BEARING ASSEMBLY, TYPE I	EACH	11
52100020	ELASTOMERIC BEARING ASSEMBLY, TYPE II	EACH	33
52100520	ANCHOR BOLTS, 1"	EACH	88
54213669	PRECAST REINFORCED CONCRETE FLARED END SECTIONS 24"	EACH	2
55100500	STORM SEWER REMOVAL 12"	FOOT	202
58700300	CONCRETE SEALER	SQ FT	781
60218400	MANHOLES, TYPE A, 4'-DIAMETER, TYPE 1 FRAME, CLOSED LID	EACH	4
* 60246541	INLET BOX SPECIAL NO. 1	EACH	3
60500060	REMOVING INLETS	EACH	4
60500070	REMOVING MANHOLES TO MAINTAIN FLOW	EACH	1
60500090	REMOVING INLETS TO MAINTAIN FLOW	EACH	2
60603500	COMBINATION CONCRETE CURB AND GUTTER, TYPE B-6.06	FOOT	1,180
60603800	COMBINATION CONCRETE CURB AND GUTTER, TYPE B-6.12	FOOT	1,656
60604400	COMBINATION CONCRETE CURB AND GUTTER, TYPE B-6.18	FOOT	118
60605000	COMBINATION CONCRETE CURB AND GUTTER, TYPE B-6.24	FOOT	1,585

CODED PAY ITEM NUMBER	ITEM DESCRIPTION	UNIT	TOTAL QUANTITY
* 60610100	COMBINATION CONCRETE CURB AND GUTTER, TYPE M-6.18, MODIFIED	FOOT	212
60618300	CONCRETE MEDIAN SURFACE, 4"	SQ FT	17,680
Δ 63000000	STEEL PLATE BEAM GUARD RAIL, TYPE A	FOOT	403
Δ 63000015	STEEL PLATE BEAM GUARD RAIL, TYPE D	FOOT	349
Δ 63100070	TRAFFIC BARRIER TERMINAL, TYPE 5	EACH	2
Δ 63100085	TRAFFIC BARRIER TERMINAL, TYPE 6	EACH	2
Δ 63100167	TRAFFIC BARRIER TERMINAL TYPE 1, SPECIAL (TANGENT)	EACH	2
Δ 63100215	TRAFFIC BARRIER TERMINAL, TYPE 6 (SPECIAL)	EACH	2
* 63200600	STEEL PLATE BEAM GUARD RAIL REMOVAL, SINGLE RAIL	FOOT	639
66700205	PERMANENT SURVEY MARKERS, TYPE I	EACH	2
* 67000400	ENGINEER'S FIELD OFFICE, TYPE A	CAL MO	17
67100100	MOBILIZATION	L SUM	1
* 70103700	TRAFFIC CONTROL COMPLETE	L SUM	1
70106800	CHANGEABLE MESSAGE SIGN	CAL MO	4
70300210	TEMPORARY PAVEMENT MARKING - LETTERS AND SYMBOLS	SQ FT	1703
70300220	TEMPORARY PAVEMENT MARKING - LINE 4"	FOOT	43,756
70300280	TEMPORARY PAVEMENT MARKING - LINE 24"	FOOT	364
70301000	WORK ZONE PAVEMENT MARKING REMOVAL	SQ FT	4,369
70400100	TEMPORARY CONCRETE BARRIER	FOOT	1003
70400200	RELOCATE TEMPORARY CONCRETE BARRIER	FOOT	399
Δ 78000100	THERMOPLASTIC PAVEMENT MARKING - LETTERS AND SYMBOLS	SQ FT	62
Δ 78000200	THERMOPLASTIC PAVEMENT MARKING - LINE 4"	FOOT	3,557
Δ 78000500	THERMOPLASTIC PAVEMENT MARKING - LINE 8"	FOOT	184
Δ 78001110	PAINT PAVEMENT MARKING - LINE 4"	FOOT	1,204
Δ 78201000	TERMINAL MARKERS - DIRECT APPLIED	EACH	4
78300105	PAVEMENT MARKING REMOVAL	FOOT	5,000
Δ 81012600	CONDUIT IN TRENCH, 2" DIA., PVC	FOOT	1,800
Δ 81200230	CONDUIT EMBEDDED IN STRUCTURE, 2" DIA., PVC	FOOT	845
Δ 81300800	JUNCTION BOX STAINLESS STEEL, ATTACHED TO STRUCTURE, 18" X 12" X 6"	EACH	4
Δ 81900200	TRENCH AND BACKFILL FOR ELECTRICAL WORK	FOOT	1,800
Δ 83008400	LIGHT POLE, ALUMINUM, 40FT. M.H., 10 FT. MAST ARM	EACH	14
Δ 83600100	LIGHT POLE FOUNDATION	EACH	8
40701951	HOT MIX ASPHALT PAVEMENT (FULL-DEPTH), 13 1/2"	SQ YD	4,988
550A0340	STORM SEWERS, CLASS A, TYPE 2 1/2"	FOOT	611
550A0360	STORM SEWERS, CLASS A, TYPE 2 1/4"	FOOT	68
550A0410	STORM SEWERS, CLASS A, TYPE 2 1/2"	FOOT	382
Δ X0323437	CONDUIT FLEXIBLE METALLIC WEATHERPROOF, 2"	EACH	4
* X0712400	TEMPORARY PAVEMENT	SQ YD	1510
* X5020301	STRUCTURE EXCAVATION PROTECTION FOR PILE BENT NO. 1	EACH	1
* X5020302	STRUCTURE EXCAVATION PROTECTION FOR PILE BENT NO. 2	EACH	1
* X5020303	STRUCTURE EXCAVATION PROTECTION FOR PILE BENT NO. 3	EACH	1
* X5020304	STRUCTURE EXCAVATION PROTECTION FOR PILE BENT NO. 4	EACH	1
* X5020305	STRUCTURE EXCAVATION PROTECTION FOR PILE BENT NO. 5	EACH	1
* X5020306	STRUCTURE EXCAVATION PROTECTION FOR PILE BENT NO. 6	EACH	1
* X5051401	FURNISHING AN ERECTING STRUCTURAL STEEL BRIDGE NO. 1	L SUM	1
* X5051402	FURNISHING AN ERECTING STRUCTURAL STEEL BRIDGE NO. 2	L SUM	1
* X5121800	PERMANENT STEEL SHEET PILING	SQ FT	342
X6065701	CONCRETE MEDIAN, TYPE SM 4.06	SQ FT	418
Δ X6310195	TRAFFIC BARRIER TERMINAL TYPE 1, SPECIAL (TANGENT), MODIFIED	EACH	2
* XX000968	INLET TYPE 700	EACH	9
X0004339	BIKE PATH APPROACH GUARDRAIL ADJUSTMENT	FOOT	56
Δ X0006577	LUMINAIRE, PULSE START, METAL HALIDE, 400W	EACH	14
Δ X0006578	LUMINAIRE, PULSE START, METAL HALIDE, 150W	EACH	3
* X0006623	MULCH, METHOD 3, SPECIAL	ACRE	3.1
* 20013798	CONSTRUCTION LAYOUT	L SUM	1
* 20018800	DRAINAGE SYSTEM	L SUM	1
* 20030250	IMPACT ATTENUATORS, TEMPORARY (NON-REDIRECTIVE), TEST LEVEL 3	EACH	1
* 20030350	IMPACT ATTENUATORS, RELOCATE (NON-REDIRECTIVE), TEST LEVEL 3	EACH	1
* 20048665	RAILROAD PROTECTIVE LIABILITY INSURANCE	L SUM	1
20076600	TRAINEES	HOURS	-
X0325442	HLMR BEARINGS, GUIDED EXPANSION, 300K	EACH	11
52100530	ANCHOR BOLTS, 1 1/4"	EACH	44
52100540	ANCHOR BOLTS, 1 1/2"	EACH	44
* XX006819	CONTRACTOR'S RIGHT-OF-ENTRY AGREEMENT	L SUM	1
* XX006820	SIDEWALK APPROACH GUARDRAIL ADJUSTMENT	FOOT	56
* XX006821	CONCRETE TRUCK WASHOUT	L SUM	1

* INDICATES PAY ITEM COVERED BY SPECIAL PROVISION

Δ SPECIALTY ITEMS

CONSTRUCTION
Type
Code
Y080
1500

Revised 2/15/07

REVISIONS	
NAME	DATE

ILLINOIS DEPARTMENT OF TRANSPORTATION
SECTION 02-00518-00-BR
WINNEBAGO COUNTY
HARRISON AVENUE OVER UPRR AND CC&PRR

SUMMARY OF QUANTITIES
SCALE: VERT.
HORIZ.
DATE 12/14/06
DRAWN BY MWH
CHECKED BY CPS



LAYOUT JMM 05/04/05
DRAWN JMM 03/20/05
REVIEWED CPS 03/20/05
12/5/2006 12:21 PM
\\031066\031075\01\InSpec\C-02-SUM.dgn

F.A.P. RTE.	SECTION	COUNTY	TOTAL SHEETS	SHEET NO.
525	02-00518-00-BR	WINNEBAGO	157	3
STA.		TO STA.		
FED. ROAD DIST. NO.	ILLINOIS	FED. AID PROJECT		

85399

GENERAL NOTES

1. THE CONTRACTOR SHALL VERIFY THE LOCATION, DEPTH, AND SIZE OF EXISTING AND PROPOSED STORM SEWER LINES PRIOR TO ORDERING AND FABRICATION OF DRAINAGE STRUCTURES OR SEWERS.
2. WHERE SECTION, SUBSECTION, SUBDIVISION, OR PROPERTY MONUMENTS ARE ENCOUNTERED, THE ENGINEER SHALL BE NOTIFIED BEFORE SUCH MONUMENTS ARE REMOVED. THE CONTRACTOR SHALL PROTECT AND PRESERVE ALL PROPERTY MARKERS UNTIL AN OWNER OR AUTHORIZED SURVEYOR HAS WITNESSED OR REFERENCED THEIR LOCATION.
3. CONTRACTORS BIDDING THIS PROJECT SHALL VISIT THE SITE BEFORE BIDDING.
4. THE CONTRACTOR SHALL FIELD VERIFY ALL DIMENSIONS AND EXISTING CONDITIONS PRIOR TO CONSTRUCTION AND NOTIFY THE ENGINEER OF ANY DISCREPANCY IMMEDIATELY.
5. THE CONTRACTOR SHALL BE RESPONSIBLE FOR REPAIRS TO ANY UTILITY LINES AND EXISTING IMPROVEMENTS TO REMAIN THAT ARE DAMAGED AS A RESULT OF THE WORK.
6. ALL SECTIONS, DETAILS, AND NOTES SHOWN ON THE DRAWINGS ARE INTENDED TO BE TYPICAL AND SHALL APPLY TO SIMILAR SITUATIONS ELSEWHERE, UNLESS OTHERWISE SHOWN.
7. ALL SIDEWALKS SHALL BE 4 INCHES THICK AND CONSTRUCTED TO THE WIDTH STATED ON THE PLANS. JOINT SPACING SHALL BE AS SHOWN ON DETAIL.
8. THE CONTRACTOR IS RESPONSIBLE FOR OBTAINING ALL NECESSARY PERMITS.
9. ALL STORM SEWER STRUCTURES SHALL BE PRECAST CONCRETE. STORM SEWER PIPE SHALL BE AS SHOWN ON THE PLAN SHEETS. SIZE OF PRECAST RISERS AND/OR GRADE RINGS SHALL BE THE SAME INSIDE SIZE AS THE PRECAST BOX OR MATCH THE NOMINAL SIZE OF THE INLET BOX.
10. ALL REINFORCEMENT BARS SHALL CONFORM TO AASHTO M31, M42, OR M53 GRADE 60.
11. ADJUSTMENT OF PROPOSED GRADES TO MATCH EXISTING ENTRANCES OR OTHER FIELD CONDITIONS MAY BE REQUIRED AS DIRECTED BY THE ENGINEER.
12. ANY DAMAGE TO THE EXISTING SIDEWALK OR CURB TO REMAIN DURING ANY CONSTRUCTION ACTIVITY SHALL BE REPAIRED AT THE CONTRACTOR'S EXPENSE.
13. IN ACCORDANCE WITH SECTION 602 OF STANDARD SPECIFICATIONS, THE CONNECTION OF EXISTING DRAIN TILES, PIPE UNDERDRAINS, PIPE CULVERTS, AND STORM SEWERS TO THE PROPOSED DRAINAGE SYSTEM STRUCTURES WILL NOT BE PAID FOR SEPARATELY BUT SHALL BE CONSIDERED AS INCLUDED IN THE PAY ITEMS PROVIDED.
 - A. SIGNS SHALL NOT BE MOVED UNTIL PROGRESS OF WORK DEMANDS.
 - B. EVERY SIGN REMOVED MUST BE RE-ERECTED AT A TEMPORARY LOCATION IN A WORKMAN LIKE MANNER AND BE VISIBLE TO ALL TRAFFIC. ALL SUCH SIGNS MUST BE MAINTAINED STRAIGHT AND NEAT FOR THE DURATION OF THE TEMPORARY SETTING.
 - C. ALL PAVEMENT MARKINGS WITHIN A GIVEN WORK AREA SHALL BE COMPLETED PRIOR TO CONSTRUCTION PHASE CHANGE.
15. ALL ELEVATIONS, STATIONS, AND OFFSETS SHOWN ON THE PLANS SHALL BE FIELD VERIFIED BY THE CONTRACTOR PRIOR TO CONSTRUCTION.
16. ALL PAVEMENT, CURB, SIDEWALK AND DRIVEWAYS TO BE ADJUSTED SHALL BE SAW CUT FULL DEPTH AT THE LIMITS OF THE ADJUSTMENT AND TRANSITION. PAYMENT FOR THE SAW CUT SHALL BE INCLUDED IN THE COST OF THE ITEM BEING REMOVED.
17. ANY UNCONTROLLED CRACKING THAT OCCURS IN P.C.C. PAVEMENTS, SIDEWALKS, CURBS, OR CURB AND GUTTER PRIOR TO FINAL ACCEPTANCE SHALL BE ROUTED OR SAWED AND SEALED ACCORDING TO IDOT STANDARD SPECIFICATION SECTION 452. THIS WORK SHALL NOT BE PAID FOR SEPARATELY, BUT SHALL BE CONSIDERED INCIDENTAL TO THE CONCRETE ITEMS.
18. TRENCH BACKFILL SHALL BE USED IN ALL LOCATIONS WHERE THE EDGE OF THE EXCAVATION TRENCH FOR UTILITY EXCAVATION IS WITHIN 2 FEET OF PROPOSED ROADWAY, CURB AND/OR SIDEWALK. QUANTITY FOR TRENCH BACKFILL WAS CALCULATED FROM IDOT "TRENCH BACKFILL TABLE" BASED ON A THEORETICAL TRENCH WIDTH. ADDITIONAL TRENCH BACKFILL THAT IS NECESSARY DUE TO OVER EXCAVATION OF TRENCH WILL NOT BE PAID FOR.
19. TRENCH BACKFILL FOR MANHOLES, INLETS, AND CATCH BASINS WILL NOT BE PAID FOR SEPARATELY, BUT SHALL BE CONSIDERED INCIDENTAL OT THE COST OF THOSE ITEMS.
20. ALL TRENCH BACKFILL SHALL BE COMPACTED TO 98% OF STANDARD PROCTOR DENSITY, NO JETTING WILL BE ALLOWED.
21. ALL TRENCH BACKFILL SHALL BE IMPORTED GRANULAR MATERIAL UNLESS EXISTING GRANULAR MATERIALS ARE SPECIFICALLY APPROVED BY THE ENGINEER.
22. ALL WARNING SIGNS FOR TRAFFIC CONTROL AND PROTECTION SHALL BE 48-IN. SIZE AND FLOURESCENT ORANGE.
23. ALL RCP STORM SEWER JOINTS SHALL CONFORM TO ASTM C 443. COST FOR MATERIAL OR LABOR NECESSARY TO MEET THIS REQUIREMENT SHALL BE INCIDENTAL TO THE VARIOUS STORM SEWER PAY ITEMS.

UTILITY CONTACTS

UTILITY NAME	TYPE	CONTACT	PHONE NUMBER
COMMONWEALTH EDISON CO. 123 ENERGY AVENUE ROCKFORD, ILLINOIS 61109	ELECTRICAL	DAVE SCHACHT	(815) 490-3261
CITY OF ROCKFORD 425 EAST STATE STREET ROCKFORD, ILLINOIS 61104	WATER & STORM	JOHN MARTIN	(815) 961-3766
INSIGHT COMMUNICATIONS 4450 KISHWAUKEE STREET ROCKFORD, ILLINOIS 61109	TV	MIKE OWENS	(815) 395-8977 (815) 395-7876 (CELL)
AT&T LONG DISTACE NETWORK SERVICES 866 ROCK CREEK ROAD PLANO, ILLINOIS 60545	COMMUNICATIONS	CARL DONAHUE	(847) 420-9115
SBC 2404 8TH AVENUE ROCKFORD, ILLINOIS 61108	COMMUNICATIONS	FRANK ROSE	(815) 394-7276
NICOR GAS 4651 LINDEN ROAD ROCKFORD, ILLINOIS 61109	GAS	STAN JANUSZ	(815) 965-5416 EXT. 211

LEGEND

	Power Pole		Right of Way Marker
	Guy Anchor		Right of Way Line
	Power Pole w/Light		Proposed Right of Way Line
	Proposed Light Pole		Construction Easement
	Telephone Splice Box		Section Line
	Traffic Signal Controller		Property Line
	Handhole		Centerline of Railroad
	Traffic Signal		Edge of Pavement
	Traffic Mast		Edge of Sidewalk
	Deciduous Tree		Curb & Gutter
	Tree Evergreen		Ditch
	Tree Removal		Fence
	Stump		Cable TV
	Manhole		Aerial Utility
	Standard Inlet		Gas Pipe
	Fire Hydrant		Guardrail
	Light Pole		Sanitary Sewer
	Flared End Section		Storm Sewer
	Valve		Telephone Cable
	Valve Vault		Water Pipe
	Test Well		Commercial Building
	Mailbox		Flagpole
	Sign		

revised 2/15/07

REVISIONS	
NAME	DATE

ILLINOIS DEPARTMENT OF TRANSPORTATION
SECTION 02-00518-00-BR
WINNEBAGO COUNTY
HARRISON AVENUE OVER UPRR AND CC&PRR

GENERAL NOTES

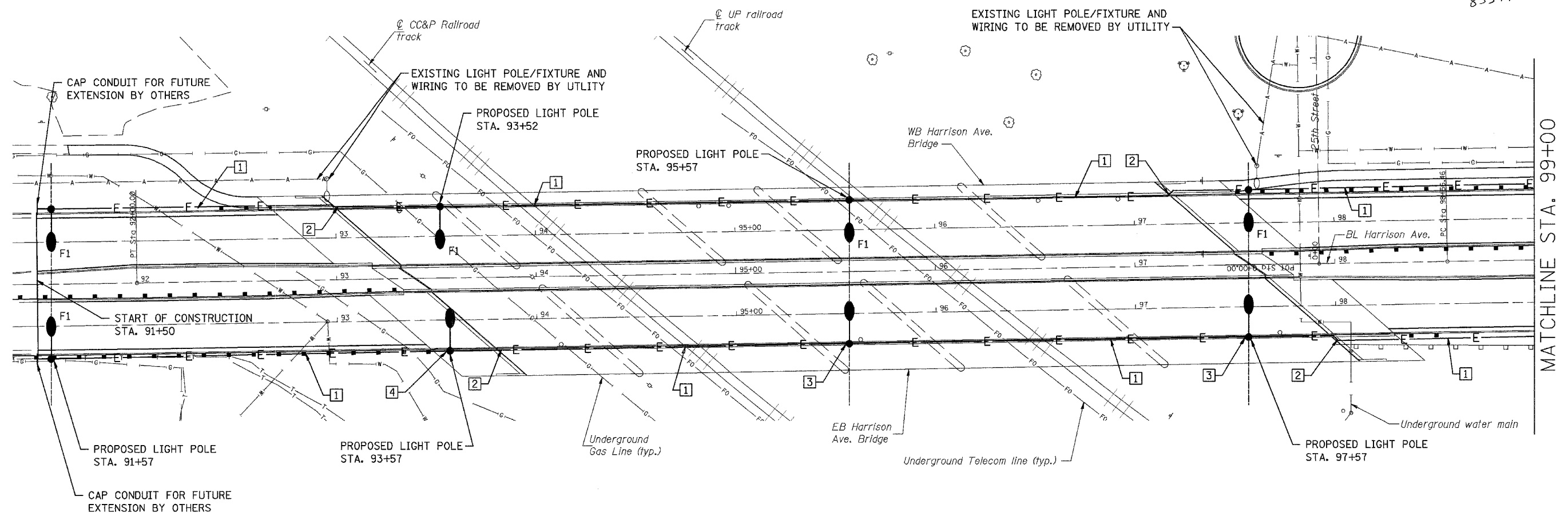
SCALE: VERT. _____
HORIZ. _____
DATE 12/14/06

DRAWN BY JDM
CHECKED BY CFS



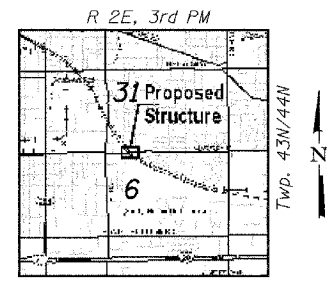
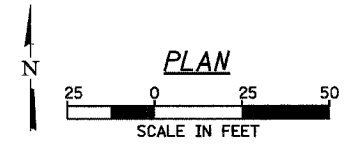
LAYOUT: JDM 05/04/05
DRAWN: JDM 03/11/06
REVIEWED: CFS 03/11/06
DATE: 02/14/07 02:40 PM
PROJECT: 02-00518-00-BR
DRAWING: 02-00518-00-BR-03-NOTES.dwg

85399



KEYED NOTES:

- 1 2" (SCHD. 40 PVC) WITH PULL STRING (200 LB) - WIRE PROVIDED UNDER FUTURE SEPARTE WORK BY OTHERS.
- 2 JUNCTION BOX BELOW BRIDGE ON ABUTMENT - REFER TO DETAIL ON LIGHTING SHEET L5.
- 3 PROVIDE TYPE F1 AND F2 LIGHT FIXTURES ON BRIDGE LIGHT POLES ONLY AS INDICATED. REFER TO MOUNTING DETAIL ON SHEET L4.
- 4 PROVIDE TYPE F1 AND F2 LIGHT FIXTURES ON APPROACH PAVEMENT PARAPET. REFER TO MOUNTING DETAIL ON SHEET L4.



LOCATION SKETCH

SUMMARY OF QUANTITIES - HARRISON AVENUE BRIDGE		
CONDUIT IN TRENCH, 2" DIA., PVC	LIN. FT.	1800
CONDUIT EMBEDDED IN STRUCTURE, 2" DIA., PVC	LIN. FT.	845
JUNCTION BOX, STAINLESS STEEL, ATTACHED TO STRUCTURE 18" x 12" x 6"	EACH	4
TRENCH AND BACKFILL FOR ELECTRIC WORK	LIN. FT.	1800
LUMINAIRE, PULSE START, METAL HALIDE, 400W	EACH	14
LUMINAIRE, PULSE START, METAL HALIDE, 150W	EACH	3
LIGHT POLE, ALUMINUM, 40 FT. M.H., 10 FT. MAST ARM	EACH	14
LIGHT POLE FOUNDATION	EACH	8
CONDUIT, FLEXIBLE METALLIC, WEATHERPROOF, 2"	EACH	4

THE LOCATION, SIZE AND TYPE OF MATERIAL OF EXISTING UNDERGROUND UTILITIES INDICATED ON THE PLANS IS NOT REPRESENTED AS BEING ACCURATE, SUFFICIENT OR COMPLETE. IT SHALL BE THE CONTRACTOR'S RESPONSIBILITY TO DETERMINE THE ACTUAL LOCATION OF ALL SUCH FACILITIES, INCLUDING THE SERVICE CONNECTIONS TO UNDERGROUND UTILITIES. PRIOR TO CONSTRUCTION THE CONTRACTOR SHALL NOTIFY THE UTILITY COMPANIES OF HIS OPERATIONAL PLANS AND SHALL OBTAIN FROM THE RESPECTIVE UTILITY COMPANIES DETAILED INFORMATION AND ASSISTANCE RELATIVE TO THE LOCATION OF THEIR FACILITIES AND THE WORKING SCHEDULE OF THE COMPANIES FOR REMOVAL OR ADJUSTMENT WHERE REQUIRED. IN THE EVENT AN UNEXPECTED UTILITY INTERFERENCE IS ENCOUNTERED DURING CONSTRUCTION, THE CONTRACTOR SHALL IMMEDIATELY NOTIFY THE UTILITY COMPANY OF JURISDICTION. THE ENGINEER SHALL ALSO BE IMMEDIATELY NOTIFIED. ANY SUCH MAINS AND SERVICES SHALL BE RESTORED TO SERVICE AT ONCE AND PAID FOR BY THE CONTRACTOR AT NO ADDITIONAL COST TO THE CONTRACT.

CONTACT JOINT UTILITY LOCATING INFORMATION FOR EXCAVATING (JULIE) 1-800-892-0123 FOR UTILITY INFORMATION.

Revised 2/15/07
Corporate License Number 184-001-084

BRIDGE LIGHTING PLAN

**HARRISON AVENUE BRIDGE
OVER UP & CC&P RAILROAD
F.A.P. ROUTE 0525
SECTION 02-00518-00-BR
ROCKFORD, ILLINOIS
WESTBOUND STRUCTURE NO. 101-6109
EASTBOUND STRUCTURE NO. 101-6111**

Copyright Hanson Professional Services Inc. 2005

L1



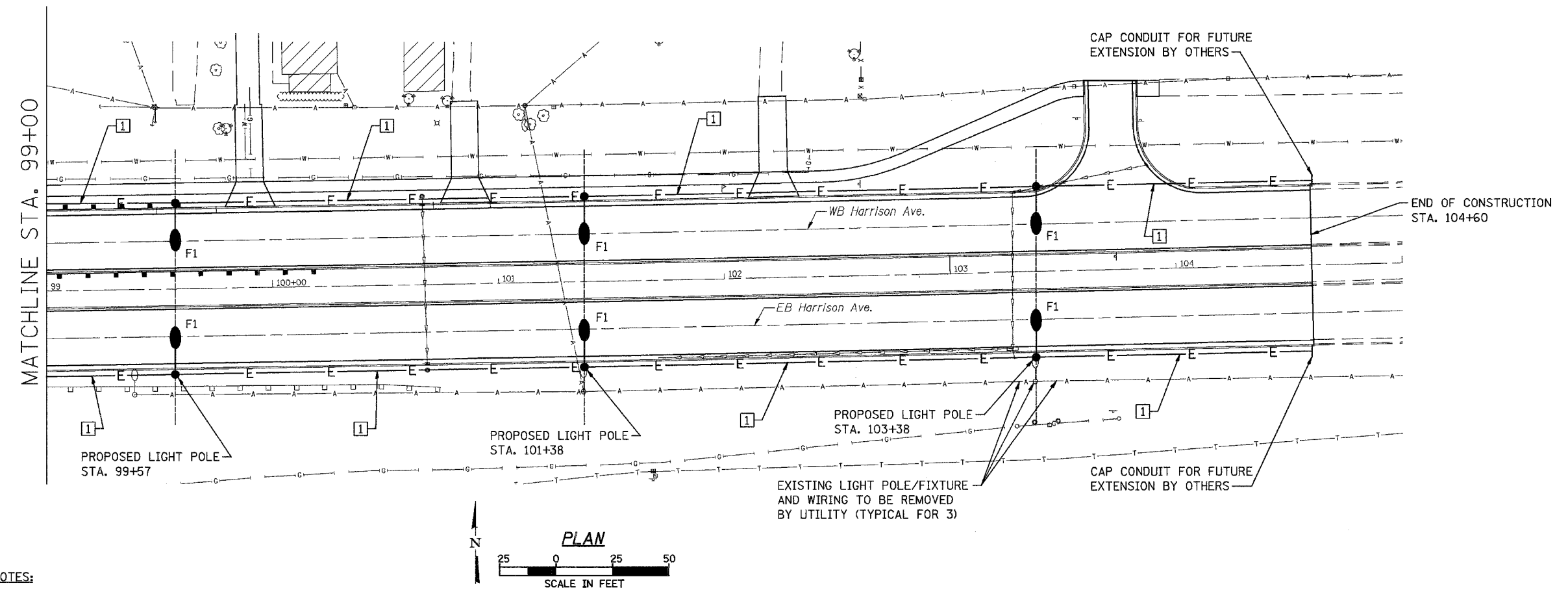
JOB NO.
03R1751
DATE
07/18/06

3:03:05 PM 07/14/06
 C:\Users\jg7\Documents\0303_0303_Plan
 06/03/06 02:51:51 StructureSheetLightingRevisions 2-12-07 EC01.dgn
 LAYOUT: jg7 07/14/06
 DRAWN: jg7 07/14/06
 REVIEWED: jg7 07/14/06

ROUTE NO.	SECTION	COUNTY	SHEET	SHEET	SHEET NO.
FAP 0525		WINNEBAGO	157	28	5 SHEETS
FED. ROAD DIST. NO. 7		ILLINOIS		FED. ROAD PROJECT	

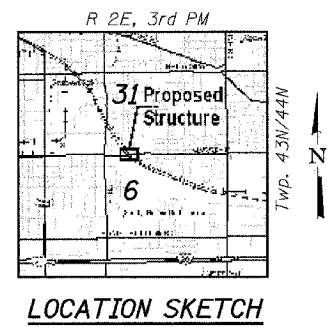
02-00518-00-BR

85399



KEYED NOTES:

- 1 2" C. (SCHED. 40 PVC) WITH PULL STRING (200 LB) - WIRE PROVIDED UNDER FUTURE SEPARATE WORK BY OTHERS.



THE LOCATION, SIZE AND TYPE OF MATERIAL OF EXISTING UNDERGROUND UTILITIES INDICATED ON THE PLANS IS NOT REPRESENTED AS BEING ACCURATE, SUFFICIENT OR COMPLETE. IT SHALL BE THE CONTRACTOR'S RESPONSIBILITY TO DETERMINE THE ACTUAL LOCATION OF ALL SUCH FACILITIES, INCLUDING THE SERVICE CONNECTIONS TO UNDERGROUND UTILITIES. PRIOR TO CONSTRUCTION THE CONTRACTOR SHALL NOTIFY THE UTILITY COMPANIES OF HIS OPERATIONAL PLANS AND SHALL OBTAIN FROM THE RESPECTIVE UTILITY COMPANIES DETAILED INFORMATION AND ASSISTANCE RELATIVE TO THE LOCATION OF THEIR FACILITIES AND THE WORKING SCHEDULE OF THE COMPANIES FOR REMOVAL OR ADJUSTMENT WHERE REQUIRED. IN THE EVENT AN UNEXPECTED UTILITY INTERFERENCE IS ENCOUNTERED DURING CONSTRUCTION, THE CONTRACTOR SHALL IMMEDIATELY NOTIFY THE UTILITY COMPANY OF JURISDICTION. THE ENGINEER SHALL ALSO BE IMMEDIATELY NOTIFIED. ANY SUCH MAINS AND SERVICES SHALL BE RESTORED TO SERVICE AT ONCE AND PAID FOR BY THE CONTRACTOR AT NO ADDITIONAL COST TO THE CONTRACT.

CONTACT JOINT UTILITY LOCATING INFORMATION FOR EXCAVATING (JULIE) 1-800-892-0123 FOR UTILITY INFORMATION.

revised
2/15/07

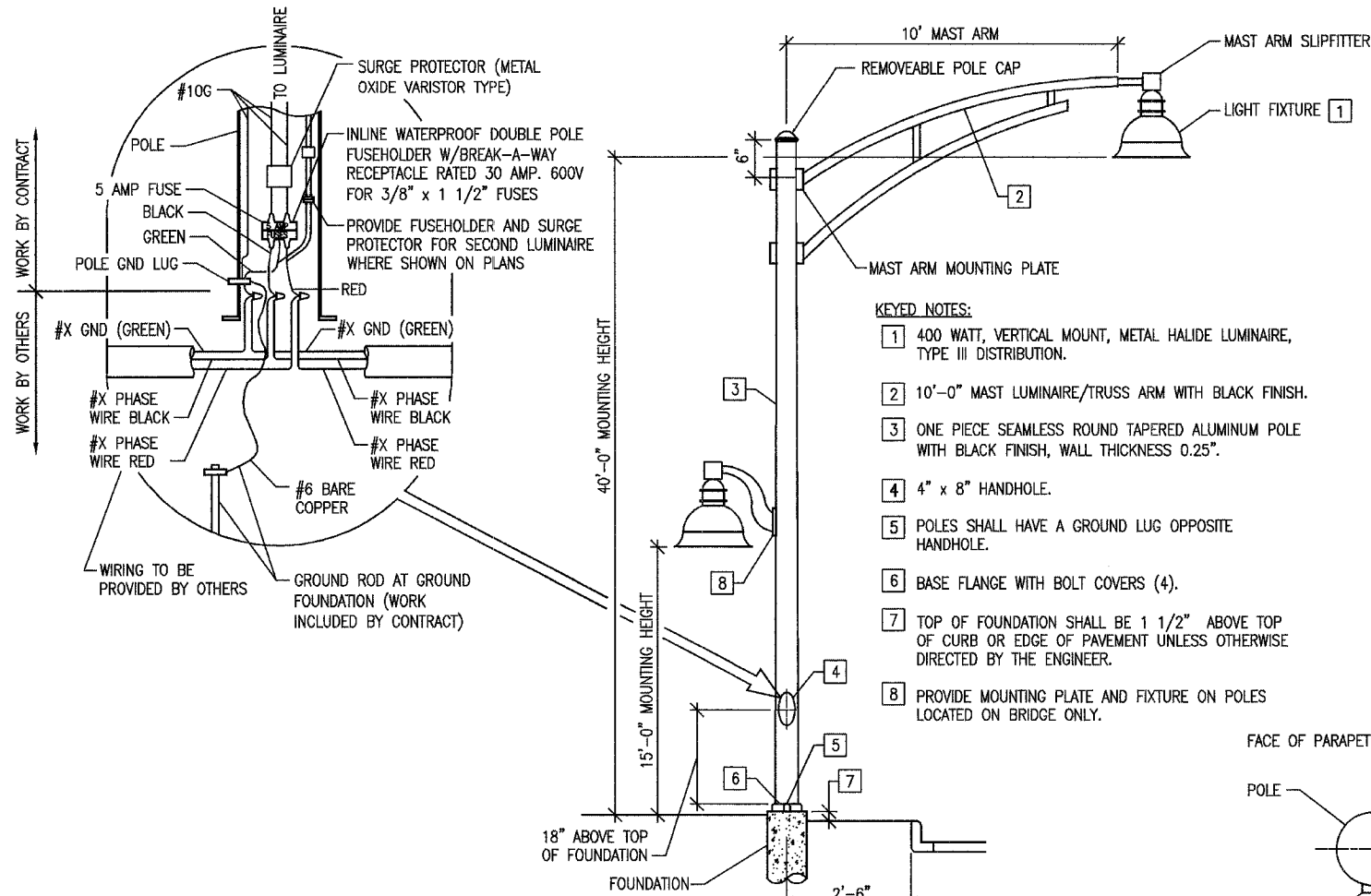
Corporate License Number 184-001-084
ROADWAY LIGHTING PLAN
 HARRISON AVENUE BRIDGE
 OVER UP & CC&P RAILROAD
 F.A.P. ROUTE 0525
 SECTION 02-00518-00-BR
 ROCKFORD, ILLINOIS
 WESTBOUND STRUCTURE NO. 101-6109
 EASTBOUND STRUCTURE NO. 101-6111

L2		JOB NO. 03R1751
		DATE 07/18/06

2:35:17 PM
 06/26/07 09:32 AM
 ANDJ\003171\518\RoadLighting\Drawings 2-18-07\02.dgn

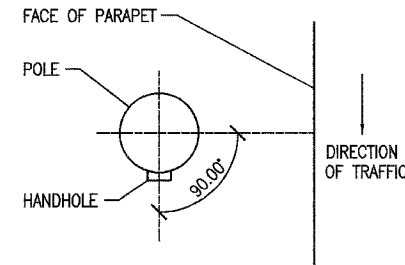
LAYOUT	PJT	07/14/06
DRAWN	AW	07/14/06
REVIEWED	PJT	07/14/06

85349



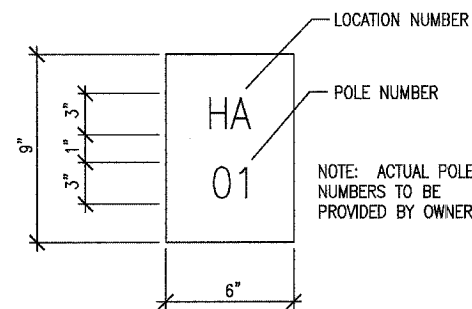
LIGHTING UNIT DETAIL
SCALE: NONE

- KEYED NOTES:**
- 400 WATT, VERTICAL MOUNT, METAL HALIDE LUMINAIRE, TYPE III DISTRIBUTION.
 - 10'-0" MAST LUMINAIRE/TRUSS ARM WITH BLACK FINISH.
 - ONE PIECE SEAMLESS ROUND TAPERED ALUMINUM POLE WITH BLACK FINISH, WALL THICKNESS 0.25".
 - 4" x 8" HANDHOLE.
 - POLES SHALL HAVE A GROUND LUG OPPOSITE HANDHOLE.
 - BASE FLANGE WITH BOLT COVERS (4).
 - TOP OF FOUNDATION SHALL BE 1 1/2" ABOVE TOP OF CURB OR EDGE OF PAVEMENT UNLESS OTHERWISE DIRECTED BY THE ENGINEER.
 - PROVIDE MOUNTING PLATE AND FIXTURE ON POLES LOCATED ON BRIDGE ONLY.



HANDHOLE ORIENTATION DETAIL
SCALE: NONE

ILLINOIS DEPARTMENT OF TRANSPORTATION LUMINAIRE PERFORMANCE TABLE		
GIVEN CONDITIONS		
ROADWAY DATA:	PAVEMENT WIDTHS	66 FT
	NUMBER OF LANES	4
	MEDIAN WIDTH	18 FT
	IES SURFACE CLASSIFICATION	R3
LIGHT POLE DATA:	MOUNTING HEIGHT	40 FT
	MAST ARM LENGTH	10 FT
	POLE SET-BACK FROM EDGE OF PAVEMENT	1.5 FT
LUMINAIRE DATA:	LAMP TYPE	400W CLEAR MH
	LAMP LUMENS	44,000
	IES VERTICAL DISTRIBUTION	MEDIUM
	IES CONTROL OF DISTRIBUTION	FULL CUTOFF
	IES LATERAL DISTRIBUTION	TYPE III
LAYOUT DATA:	SPACING	200 FT
	CONFIGURATION	SINGLE HEAD POLE MOUNT
	LUMINAIRE OVERHANG OVER EDGE OF PAVEMENT LINE	8.5 FT
NOTE: VARIATIONS FROM THE ABOVE SPECIFIED IES DISTRIBUTION PATTERN MAY BE REQUESTED AND ACCEPTANCE OF VARIATIONS WILL BE SUBJECT TO REVIEW BY THE ENGINEER BASED ON HOW WELL THE PERFORMANCE REQUIREMENTS ARE MET.		
PERFORMANCE REQUIREMENTS		
NOTE: THESE PERFORMANCE REQUIREMENTS SHALL BE THE MINIMUM ACCEPTABLE STANDARDS OF PHOTOMETRIC PERFORMANCE FOR THE LUMINAIRE, BASED ON THE GIVEN CONDITIONS LISTED ABOVE.		
ILLUMINATION:	AVERAGE HORIZONTAL ILLUMINATION, (EAVE)	1.3 FC
	UNIFORMITY RATIO, (EAVE/EMIN)	3.2
LUMINANCE:	AVERAGE LUMINANCE: (LAVE)	1.2 Cd/m2
	UNIFORMITY RATIOS: (LAVE/LMIN)	2.0
	(LMAX/LMIN)	3.5
	MAXIMUM VEILING LUMINANCE RATIO: (LV/LAVE)	0.2



THE CONTRACTOR SHALL FURNISH AND INSTALL A LIGHT POLE IDENTIFICATION ON EACH NEW LIGHT POLE, AS SHOWN ABOVE, COST INCLUDED IN THE RESPECTIVE LIGHT POLE PAY ITEM. THE NUMERALS SHALL BE 3 IN. SERIES "D", BLACK, SCREENED ON SILVER-WHITE TYPE B PRESSURE SENSITIVE REFLECTIVE SHEETING CONFORMING TO THE REQUIREMENTS OF SECTION T602.01 OF THE STANDARD SPECIFICATIONS FOR TRAFFIC CONTROL ITEMS. THE NUMERALS SHALL CONFORM TO THE FHWA "STANDARD ALPHABETS FOR HIGHWAY SIGNS".

THE LIGHT POLE IDENTIFICATION SHALL BE APPLIED TO SIGN BASE MATERIAL AS SPECIFIED IN SECTION 1069.02 OF THE STANDARD SPECIFICATIONS, APPROXIMATELY 7 FT. ABOVE THE ADJACENT PAVEMENT GRADE VISIBLE TO APPROACHING TRAFFIC IN ACCORDANCE WITH HIGHWAY STANDARD 720001.

LIGHT POLE IDENTIFICATION DETAIL
SCALE: NONE

LIGHTING FIXTURE SCHEDULE						
FIXT. TYPE	DESCRIPTION	MANUFACTURER & CAT. NO.	LAMPS/WATTS	VOLTS	MOUNTING	REMARKS
F1	POLE MOUNTED DECORATIVE HEAD ROADWAY LUMINAIRE, HEAVY GAUGE ALUMINUM HOUSING, FULLY GASKETED FOR WEATHER AND BUG TIGHTNESS, BAKED ON BLACK POLYESTER POWDER COAT FINISH, ANODIZED ALUMINUM TYPE III FULL CUTOFF OPTICS, TEMPERED GLASS LENS, MEDIUM BASE PORCELAIN SOCKET, MAG. REG. TYPE BALLAST, UL LISTED WET LOCATIONS.	VISIONSCAPES: ODN-2T3400P6 MAP-01BKC2H5 OR APPROVED EQUAL	1-400W MH ANSI CODE NO. M59 456 TOTAL INPUT WATTS	480 (MULTI-TAP BALLAST)	MOUNTED AT TOP OF A 40'-0" POLE WITH A 10'-0" MAST ARM	
F2	POLE MOUNTED DECORATIVE HEAD WALKWAY LUMINAIRE, HEAVY GAUGE ALUMINUM HOUSING, FULLY GASKETED FOR WEATHER AND BUG TIGHTNESS, BAKED ON BLACK POLYESTER POWDER COAT FINISH, ANODIZED ALUMINUM TYPE II FULL CUTOFF OPTICS, TEMPERED GLASS LENS, MEDIUM BASE PORCELAIN SOCKET, MAG. REG. TYPE BALLAST, UL LISTED WET LOCATIONS.	VISIONSCAPES: ODN-1T2150P6 PMBKC2H5/VSWA8 OR APPROVED EQUAL	1-150W MH ANSI CODE NO. M81 193 TOTAL INPUT WATTS	480 (MULTI-TAP BALLAST)	MOUNTED ON SIDE OF ROADWAY POLE WITH DECORATIVE ARM	

2:27:49 PM
 06/16/07 09:27 AM
 AND:\jbc\CLM\F5\Struct\Stem\Lighting\details 2-12-07-E-50.dgn
 LAYOUT PJT 07/14/06
 DRAWN ANC 07/14/06
 REVIEWED PJT 07/14/06

revised
2/15/07

Corporate License Number 184-001-084

LIGHTING DETAILS

HARRISON AVENUE BRIDGE
 OVER UP & CC&P RAILROAD
 F.A.P. ROUTE 0525
 SECTION 02-00518-00-BR
 ROCKFORD, ILLINOIS
 WESTBOUND STRUCTURE NO. 101-6109
 EASTBOUND STRUCTURE NO. 101-6111

© Copyright Hanson Professional Services Inc. 2005

L3

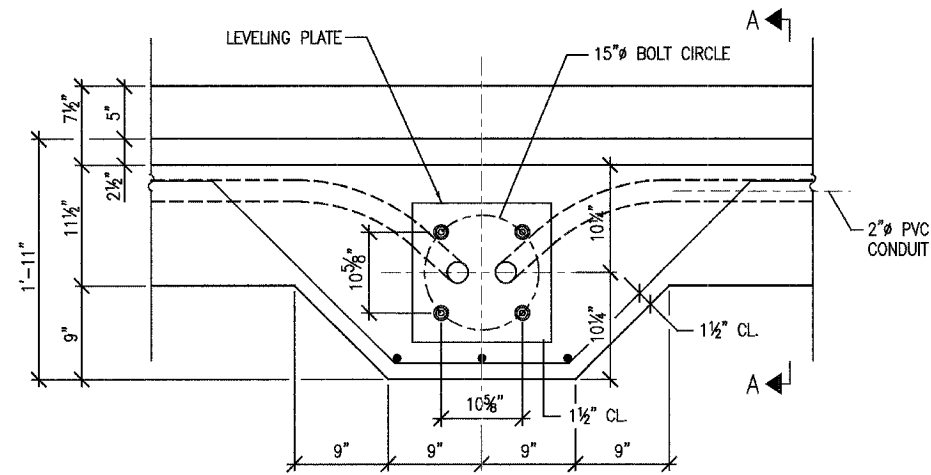


JOB NO. 03R1751

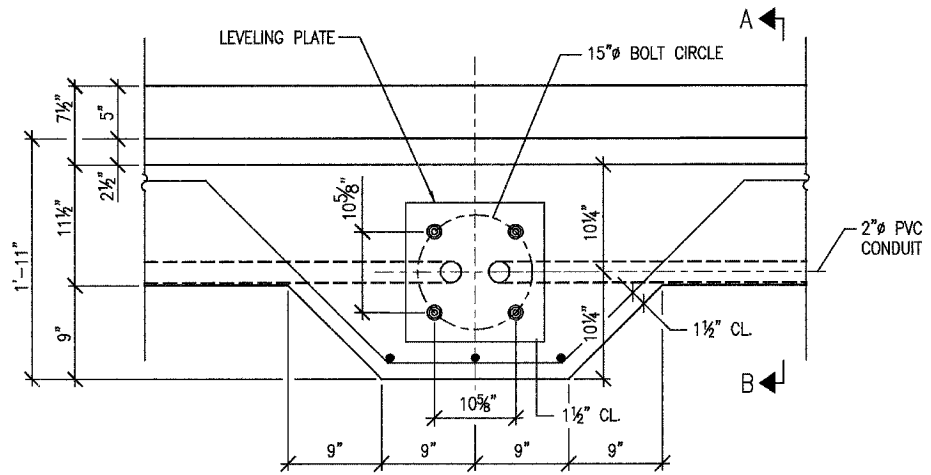
DATE 07/18/06

ROUTE NO.	SECTION	COUNTY	SHEET	SHEET	SHEET NO.
FAP 0525		WINNEBAGO	157	38	5 SHEETS
FED. ROAD DIST. NO. 7		ILLINOIS		FED. AID PROJECT	
• 02-00518-00-BR					

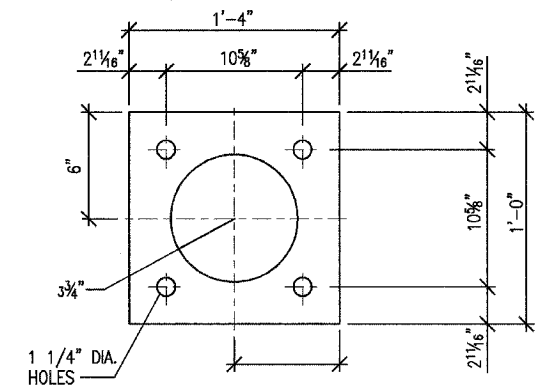
85399



PLAN



PLAN

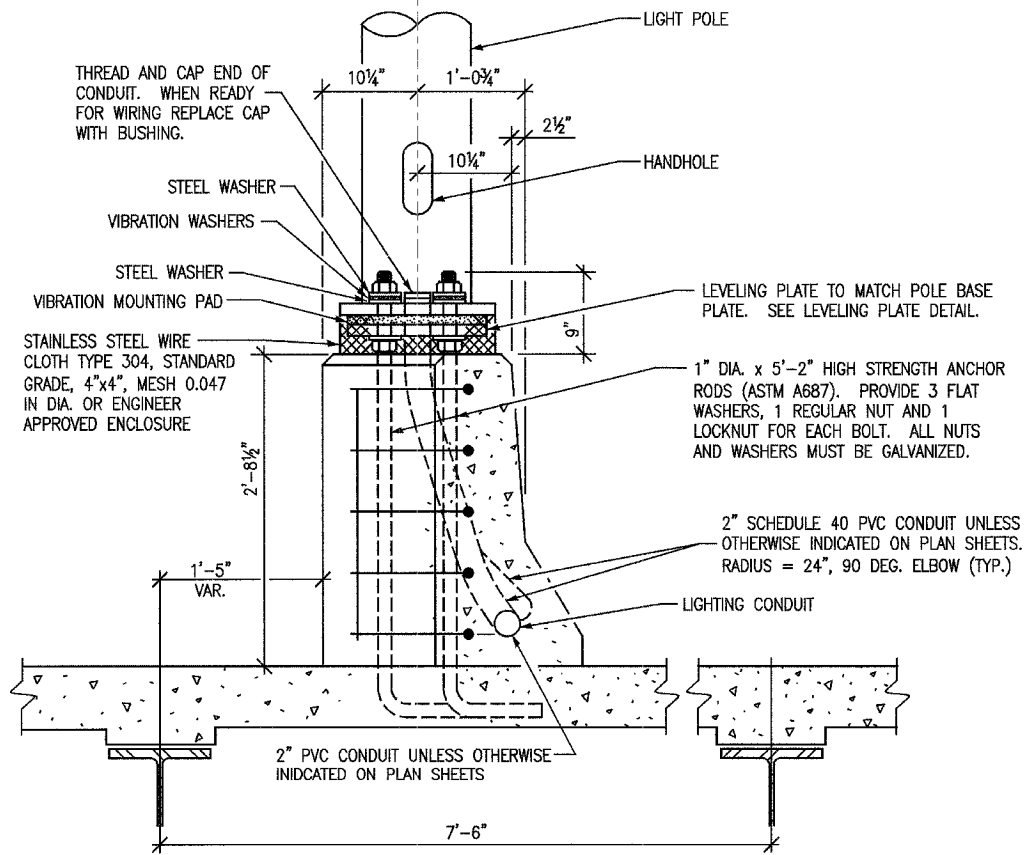


LEVELING PLATE DETAIL
SCALE: NONE

GENERAL NOTES:

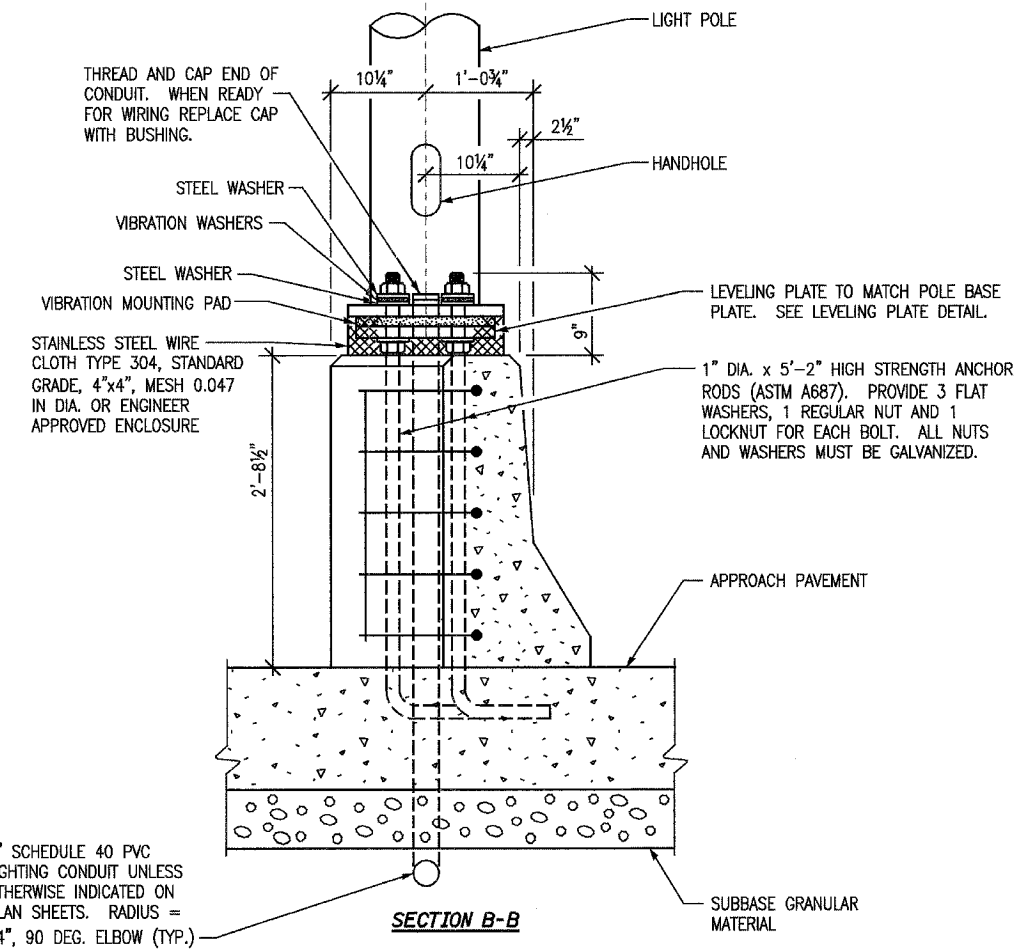
1. THE COST OF ANCHOR BOLTS AND FOUNDATION ON BRIDGE IS INCLUDED WITH BRIDGE SUPERSTRUCTURE.
2. 2" NON METALLIC FLEXIBLE CONDUIT SHALL BE 24" (MIN.) IN LENGTH. IT SHALL HAVE SUFFICIENT SLACK TO ALLOW DEFLECTION AND EXPANSION.
3. ALL JUNCTION BOXES AND PULL BOXES ATTACHED TO THE STRUCTURE SHALL BE STAINLESS STEEL NEMA 4X (PER ARTICLE 1088.04), SIZE AS SPECIFIED. THE DOOR SHALL HAVE A STAINLESS STEEL CONTINUOUS HINGE PIN AND CLAMP ASSEMBLY.
4. THE CONTRACTOR SHALL NOT DRILL ANY HOLES IN THE BEAM, DECK OR SUPERSTRUCTURE OF THE BRIDGE OR WELD TO THE STRUCTURE UNLESS OTHERWISE SPECIFIED.
5. CONDUIT SHALL EXIT PARAPET IN LONGITUDINAL STRAIGHT LINE.
6. ALL JUNCTION BOXES SHALL HAVE A 1" WIRE MESH DRAIN IN THE BOTTOM.
7. THE COST OF ANCHOR BOLTS AND FOUNDATION ON APPROACH PAVEMENT IS INCLUDED WITH BRIDGE SUPERSTRUCTURE.

Revised 2/15/07



SECTION A-A

LIGHT POLE ON PARAPET (BRIDGE)
SCALE: NONE



SECTION B-B

LIGHT POLE ON PARAPET (APPROACH PAVEMENT)
SCALE: NONE

8:30:04 PM
 06/16/07 08:30 PM
 J:\03\06\03\07\5\Struct\Lighting\Drawings 2-12-07-E-502.dgn

LAYOUT	PJT	07/14/06
DRAWN	AKC	07/14/06
REVIEWED	PJT	07/14/06

Corporate License Number 184-001-084

BRIDGE PARAPET/LIGHTING DETAILS

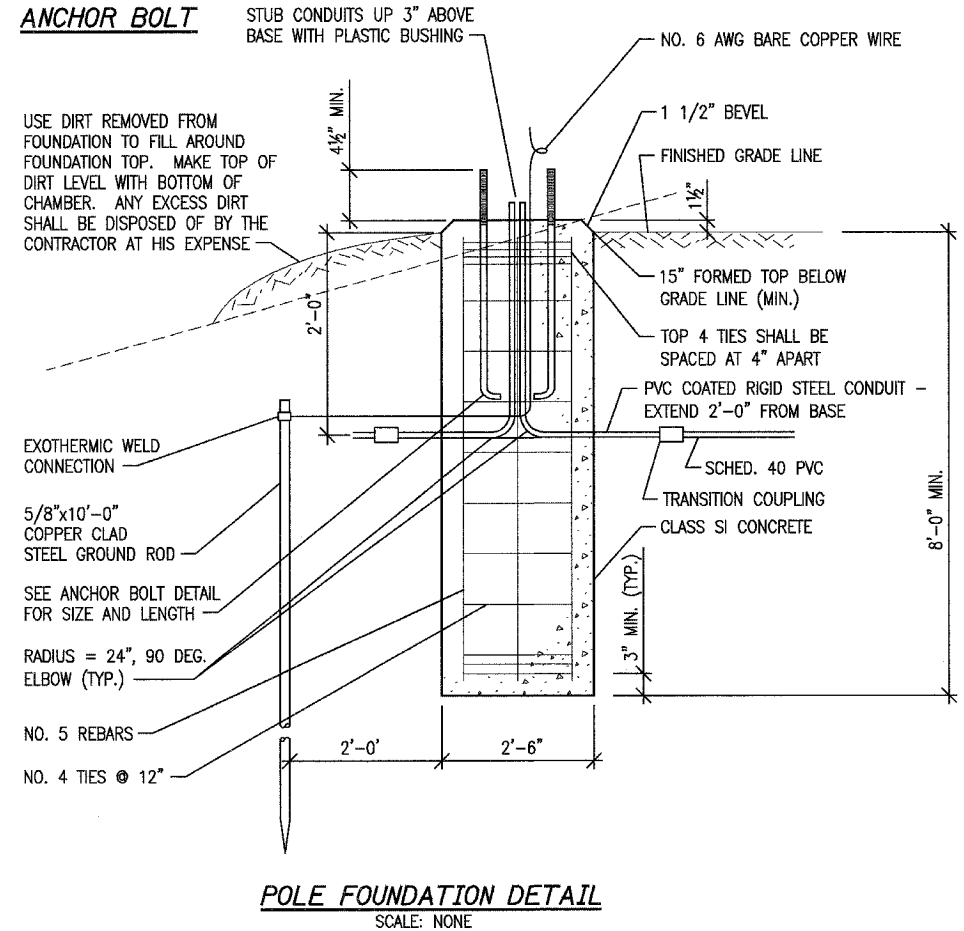
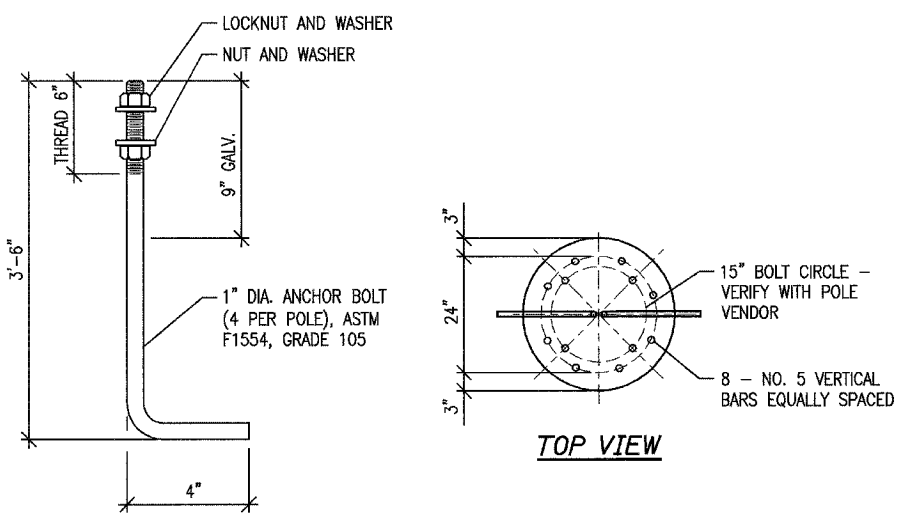
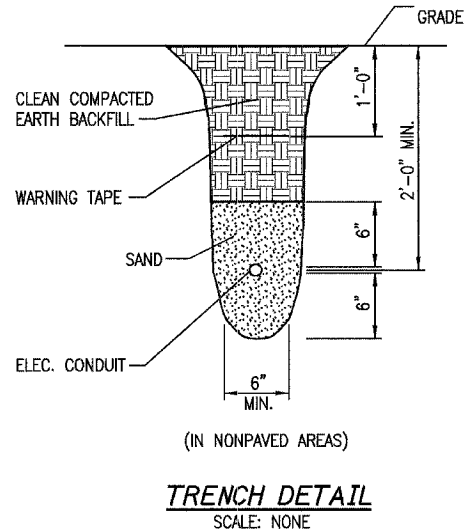
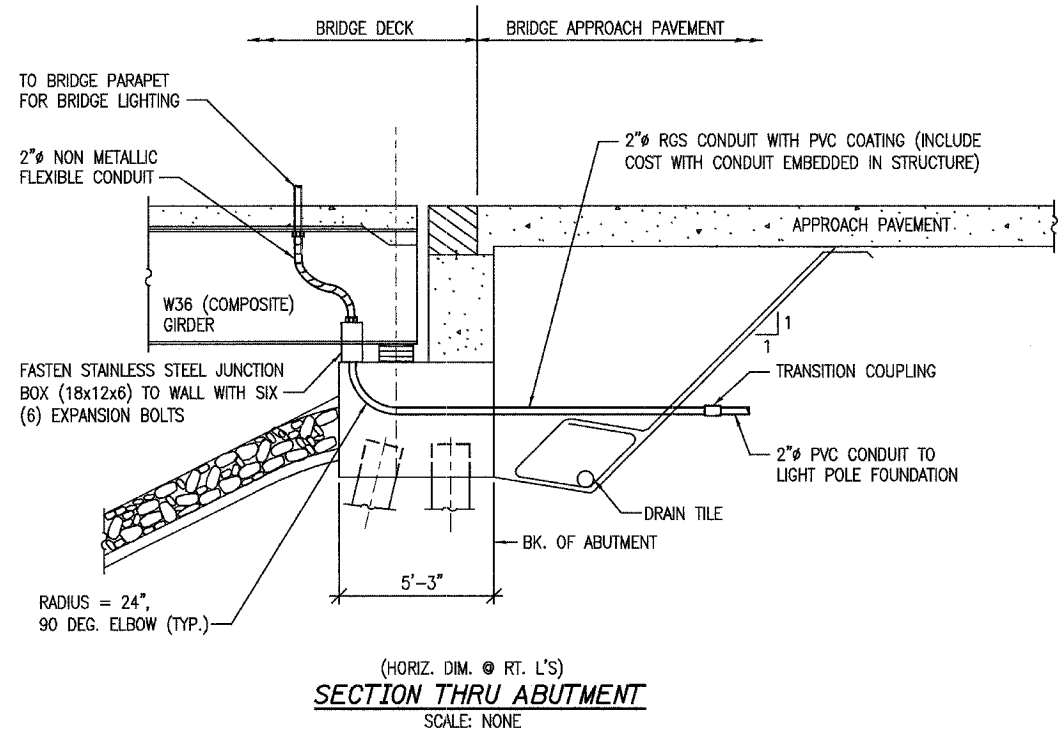
HARRISON AVENUE BRIDGE
 OVER UP & CC&P RAILROAD
 F.A.P. ROUTE 0525
 SECTION 02-00518-00-BR
 ROCKFORD, ILLINOIS
 WESTBOUND STRUCTURE NO. 101-6109
 EASTBOUND STRUCTURE NO. 101-6111

L4



DATE
07/18/06

85399



2:34:00 PM
 02/16/2007 08:31 PM
 AN3 Jaha02/16/07 5:51 PM
 07/14/06
 07/14/06
 07/14/06

revised 2/15/07

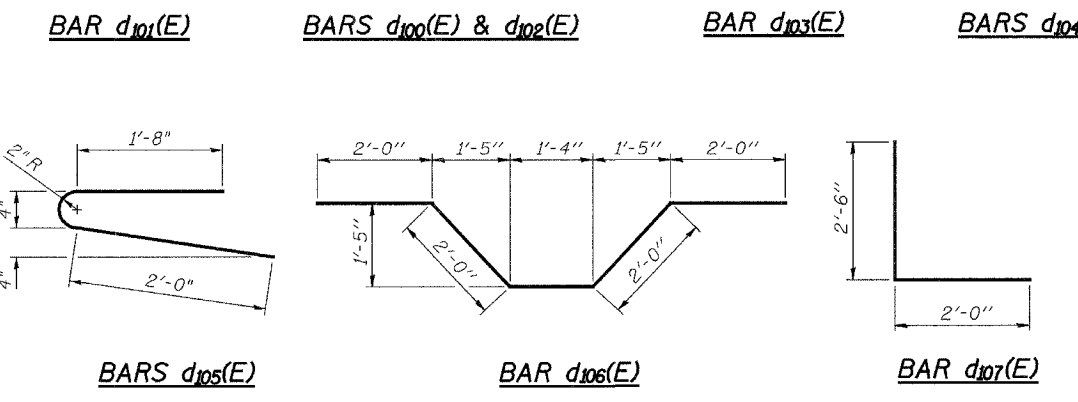
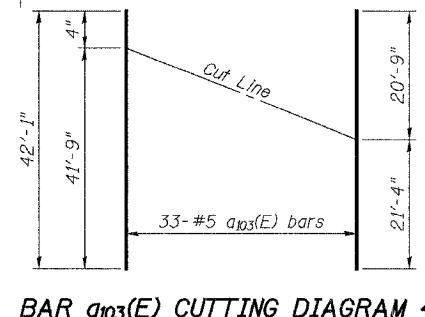
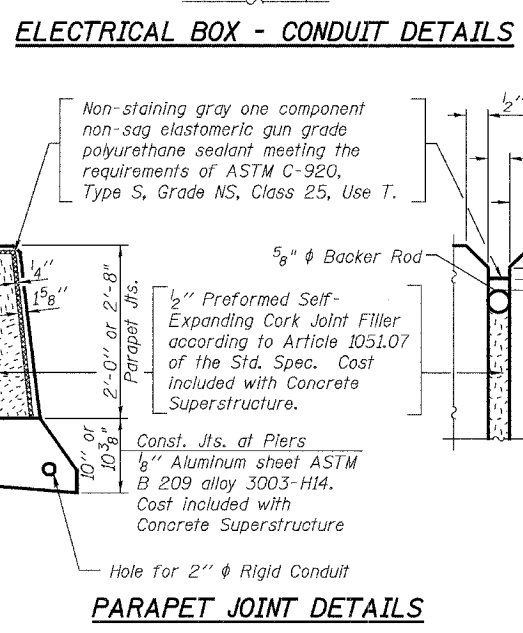
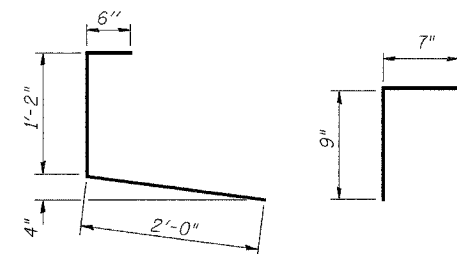
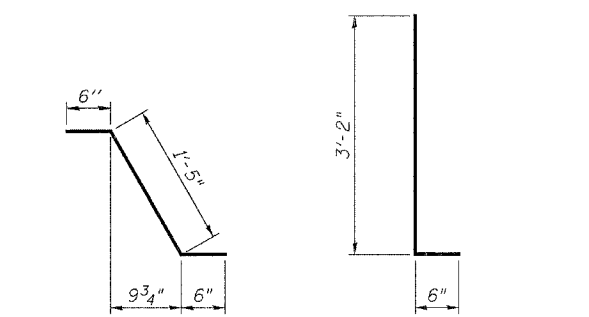
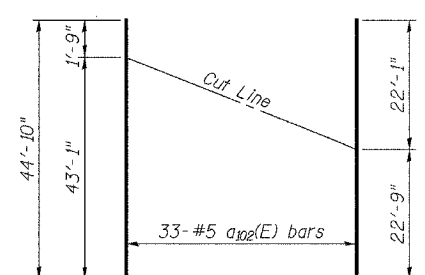
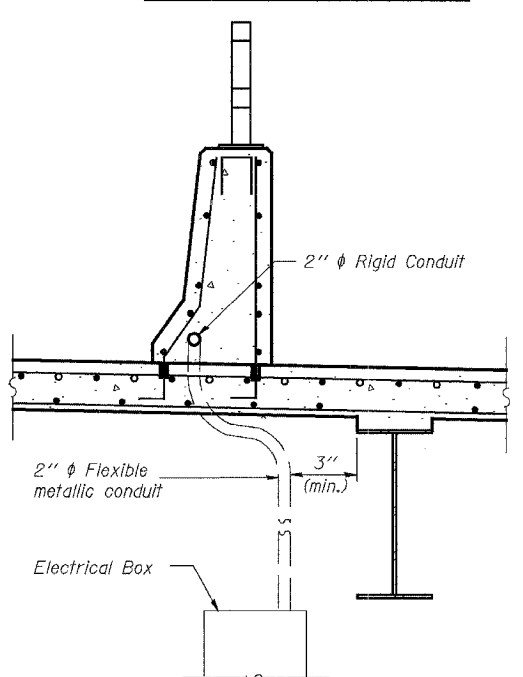
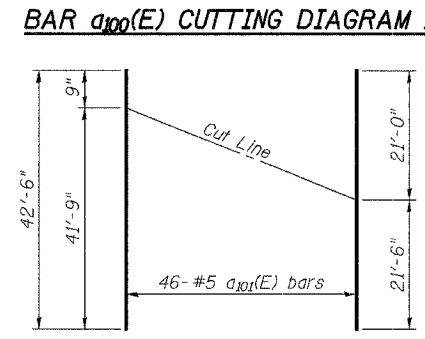
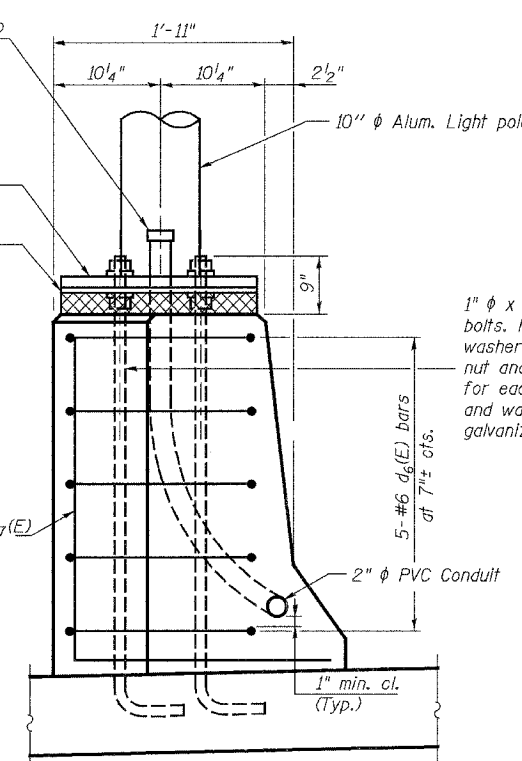
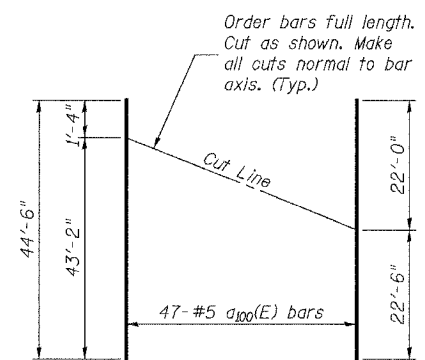
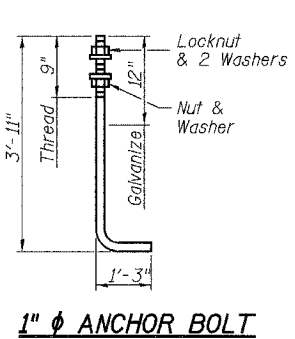
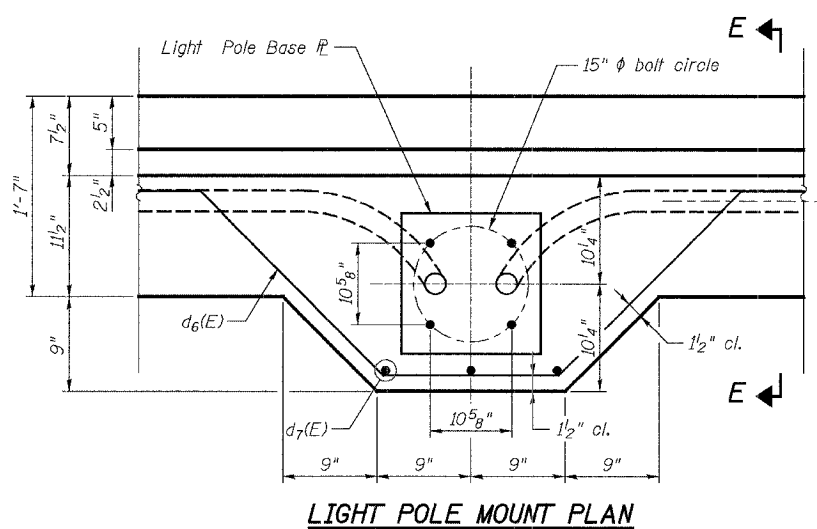
Corporate License Number 184-001-084

ROADWAY/LIGHTING DETAILS

HARRISON AVENUE BRIDGE
 OVER UP & CC&P RAILROAD
 F.A.P. ROUTE 0525
 SECTION 02-00518-00-BR
 ROCKFORD, ILLINOIS
 WESTBOUND STRUCTURE NO. 101-6109
 EASTBOUND STRUCTURE NO. 101-6111

SUPERSTRUCTURE BILL OF MATERIAL

Bar	No.	Size	Length	Shape
a ₁₀₀ (E)	47	#5	44'-6"	—
a ₁₀₁ (E)	46	#5	42'-6"	—
a ₁₀₂ (E)	33	#5	44'-10"	—
a ₁₀₃ (E)	33	#5	42'-1"	—
a ₁₀₄ (E)	4	#5	32'-6"	—
a ₁₀₅ (E)	4	#5	33'-5"	—
a ₁₀₆ (E)	1262	#5	43'-3"	—
a ₁₀₇ (E)	417	#6	4'-6"	—
b ₁₀₀ (E)	598	#5	34'-2"	—
b ₁₀₁ (E)	88	#6	28'-7"	—
b ₁₀₂ (E)	176	#6	25'-3"	—
b ₁₀₃ (E)	88	#6	31'-10"	—
b ₁₀₄ (E)	644	#5	31'-11"	—
d ₁₀₀ (E)	455	#5	3'-8"	—
d ₁₀₁ (E)	455	#5	2'-5"	—
d ₁₀₂ (E)	455	#4	3'-8"	—
d ₁₀₃ (E)	455	#4	3'-8"	—
d ₁₀₄ (E)	200	#4	2'-1"	—
d ₁₀₅ (E)	455	#4	4'-5"	—
d ₁₀₆ (E)	15	#6	9'-4"	—
d ₁₀₇ (E)	9	#6	4'-6"	—
e ₁₀₀ (E)	12	#4	15'-10"	—
e ₁₀₁ (E)	42	#4	13'-8"	—
e ₁₀₂ (E)	28	#4	14'-6"	—
e ₁₀₃ (E)	56	#4	18'-5"	—
e ₁₀₄ (E)	28	#4	13'-1"	—
e ₁₀₅ (E)	14	#4	15'-5"	—
e ₁₀₆ (E)	14	#4	16'-3"	—
e ₁₀₇ (E)	28	#4	12'-3"	—
e ₁₀₈ (E)	56	#4	18'-0"	—
e ₁₀₉ (E)	28	#4	16'-1"	—
e ₁₁₀ (E)	70	#4	15'-11"	—
x ₁₀₀ (E)	92	#5	4'-1"	—
Reinforcement Bars, Epoxy Coated		Pound	143,020	
Concrete Superstructure		Cu. Yds.	584.1	
Bridge Deck Grooving		Sq. Yds.	1205	
Protective Coat		Sq. Yds.	2760	
Floor Drains		Each	3	



NOTES
 Work this sheet with Sheets 10 thru 15 of 50.
 Bar indicated thus 20x3-#5 etc. indicates 20 lines of bars with 3 lengths per line.
 For light pole spacing see Sheet 13 of 50.
 Reinforcement bars designated (E) shall be epoxy coated.
 Cost of anchor bolts is included with Concrete Superstructure.
 Conduit shall not be placed in parapet until reinforcement is set.

Corporate License Number 184-001-084

SUPERSTRUCTURE DETAILS

EASTBOUND HARRISON AVENUE
 OVER UP & CC&P RAILROAD
 F.A.P. ROUTE 0525
 SECTION 02-00518-00-BR
 ROCKFORD, ILLINOIS
 STATION 95+72.00
 STRUCTURE NO. 101-6111

© Copyright Hanson Professional Services Inc. 2006
 HANSON
 03R1751
 12/14/06

2004-06 PM JAR 12/01/06
 DEVENOR 02/04 PM
 10/3/03 11/27/05
 REVIEWED P.L.N. 08/09/06
 LAYOUT JAR 12/01/06
 DRAWN M.W.J. 07/20/06
 REVISIONS P.L.N. 08/09/06

85399

SUPERSTRUCTURE BILL OF MATERIAL

Bar	No.	Size	Length	Shape
a(E)	38	#5	35'-9"	—
a ₁ (E)	39	#5	37'-9"	—
a ₂ (E)	27	#5	35'-8"	—
a ₃ (E)	27	#5	37'-4"	—
a ₄ (E)	4	#5	28'-2"	—
a ₅ (E)	4	#5	27'-3"	—
a ₆ (E)	1289	#5	36'-3"	—
a ₇ (E)	417	#6	4'-6"	—
b(E)	507	#5	34'-2"	—
b ₁ (E)	74	#6	28'-7"	—
b ₂ (E)	148	#6	25'-3"	—
b ₃ (E)	74	#6	31'-10"	—
b ₄ (E)	532	#5	31'-11"	—
d(E)	455	#5	3'-8"	—
d ₁ (E)	455	#5	2'-5"	—
d ₂ (E)	455	#4	3'-8"	—
d ₃ (E)	455	#4	3'-11"	—
d ₄ (E)	200	#4	2'-1"	—
d ₅ (E)	455	#4	4'-5"	—
d ₆ (E)	15	#6	9'-4"	—
d ₇ (E)	9	#6	4'-6"	—
e(E)	12	#4	15'-10"	—
e ₁ (E)	42	#4	13'-8"	—
e ₂ (E)	28	#4	14'-6"	—
e ₃ (E)	56	#4	18'-5"	—
e ₄ (E)	28	#4	13'-1"	—
e ₅ (E)	14	#4	15'-5"	—
e ₆ (E)	14	#4	16'-3"	—
e ₇ (E)	28	#4	12'-3"	—
e ₈ (E)	56	#4	18'-0"	—
e ₉ (E)	28	#4	16'-1"	—
e ₁₀ (E)	70	#4	15'-11"	—
x(E)	78	#5	4'-1"	—

Bar	No.	Size	Length	Shape
e ₁₁ (E)	2	#8	32'-0"	—
e ₁₂ (E)	4	#8	41'-6"	—
e ₁₃ (E)	8	#8	14'-6"	—
e ₁₄ (E)	12	#8	27'-4"	—
e ₁₅ (E)	8	#8	13'-1"	—
e ₁₆ (E)	4	#8	15'-5"	—
e ₁₇ (E)	4	#8	16'-3"	—
e ₁₈ (E)	8	#8	12'-3"	—
e ₁₉ (E)	12	#8	26'-9"	—
e ₂₀ (E)	8	#8	16'-1"	—
e ₂₁ (E)	12	#8	29'-6"	—
e ₂₂ (E)	2	#5	30'-6"	—
e ₂₃ (E)	2	#5	40'-0"	—
e ₂₄ (E)	8	#5	14'-6"	—
e ₂₅ (E)	12	#5	26'-0"	—
e ₂₆ (E)	8	#5	13'-1"	—
e ₂₇ (E)	4	#5	15'-5"	—
e ₂₈ (E)	4	#5	16'-3"	—
e ₂₉ (E)	8	#5	12'-3"	—
e ₃₀ (E)	12	#5	25'-5"	—
e ₃₁ (E)	8	#5	16'-1"	—
e ₃₂ (E)	6	#5	27'-7"	—
e ₃₃ (E)	6	#5	28'-1"	—
e ₃₄ (E)	2	#5	41'-6"	—
e ₃₅ (E)	12	#4	16'-4"	—
e ₃₆ (E)	2	#8	32'-11"	—
e ₃₇ (E)	2	#5	31'-5"	—
x(E)	78	#5	4'-1"	—

Reinforcement Bars, Epoxy Coated	Pound	123,290
Concrete Superstructure	Cu. Yds.	513.1
Bridge Deck Grooving	Sq. Yds.	1205
Protective Coat	Sq. Yds.	2381
Floor Drains	Each	5

NOTES

Work this sheet with Sheets 10 thru 15 of 50. Bar indicated thus 20x3-#5 etc. indicates 20 lines of bars with 3 lengths per line. For light pole spacing see Sheet 13 of 50. Reinforcement bars designated (E) shall be epoxy coated. Cost of anchor bolts is included with Concrete Superstructure. Conduit shall not be placed in parapet until reinforcement is set.

revised 2/15/07

Corporate License Number 184-001-084

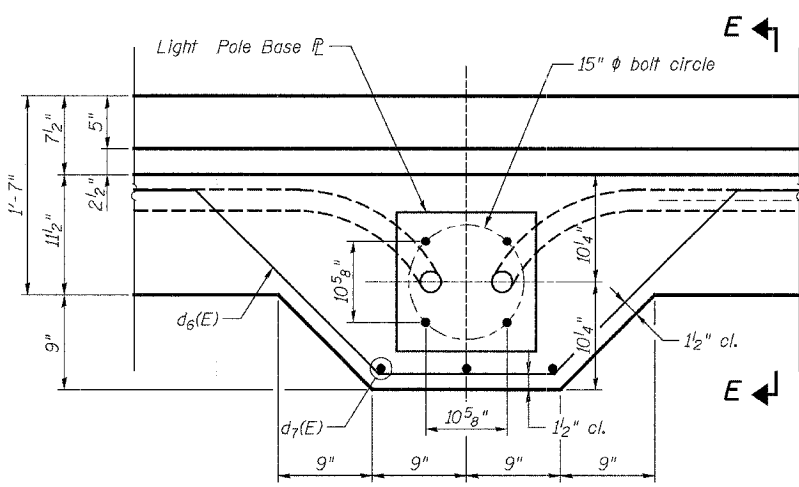
SUPERSTRUCTURE DETAILS

WESTBOUND HARRISON AVENUE
OVER UP & CC&P RAILROAD
F.A.P. ROUTE 0525
SECTION 02-00518-00-BR
ROCKFORD, ILLINOIS
STATION 95+25.35
STRUCTURE NO. 101-6109

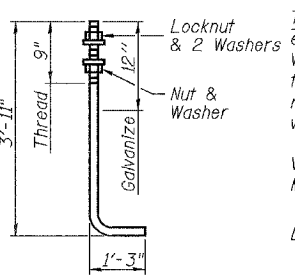
© Copyright Hanson Professional Services Inc. 2006



JOB NO.
03R1751
DATE
12/14/06

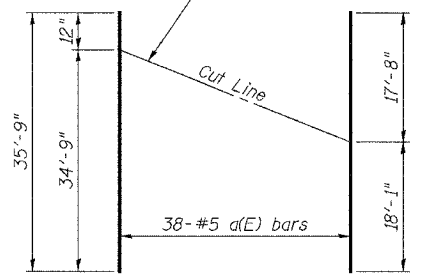


LIGHT POLE MOUNT PLAN

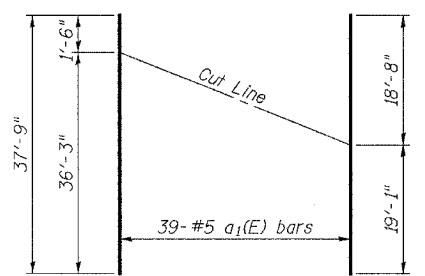


1" ϕ ANCHOR BOLT

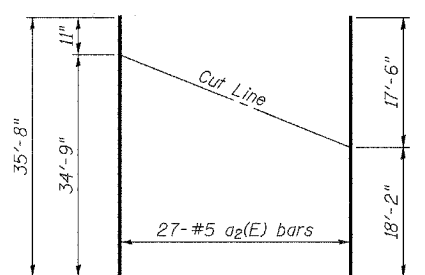
Order bars full length. Cut as shown. Make all cuts normal to bar axis (Typ.)



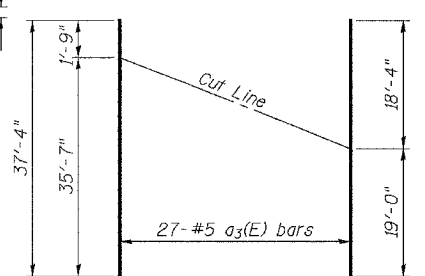
BAR a(E) CUTTING DIAGRAM 1



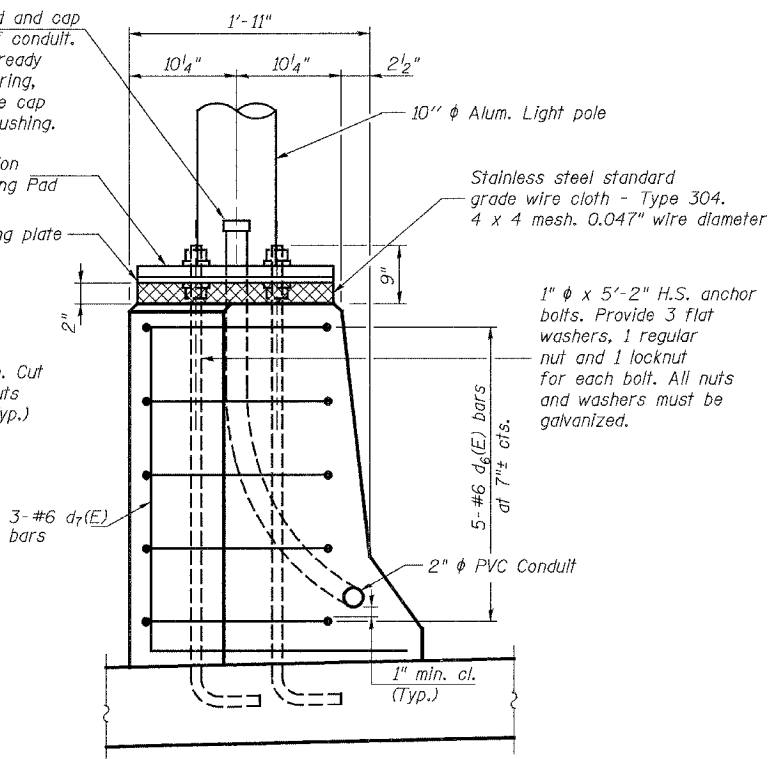
BAR a₁(E) CUTTING DIAGRAM 2



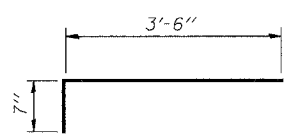
BAR a₂(E) CUTTING DIAGRAM 3



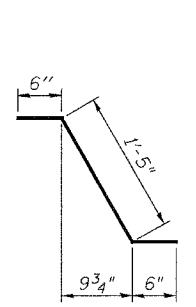
BAR a₃(E) CUTTING DIAGRAM 4



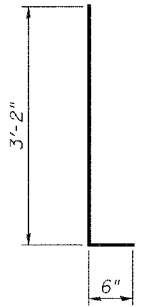
SECTION E-E



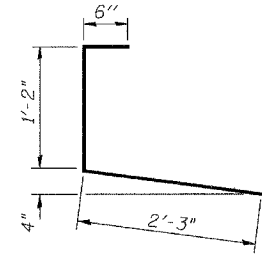
BARS x(E)



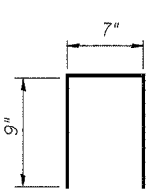
BAR d₁(E)



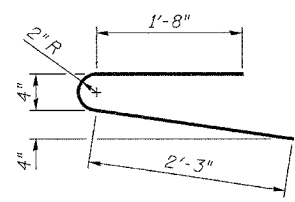
BARS d(E) & d₂(E)



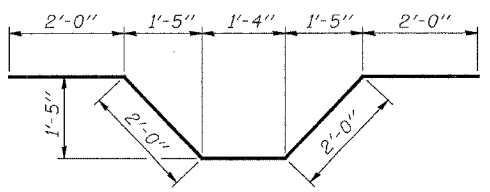
BAR d₃(E)



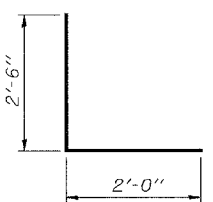
BARS d₄(E)



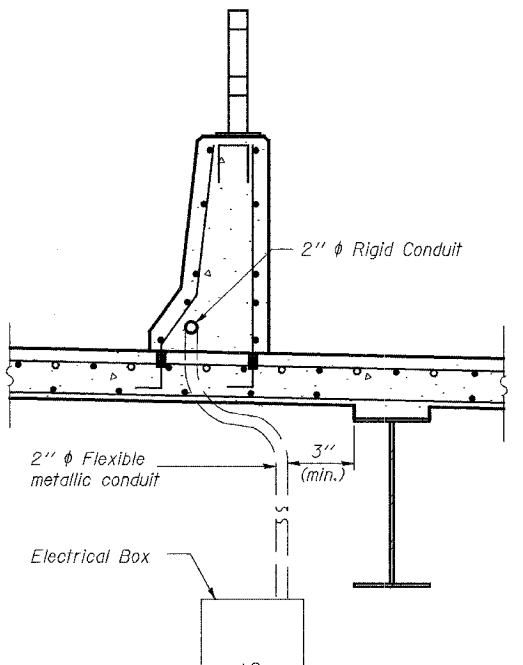
BAR d₅(E)



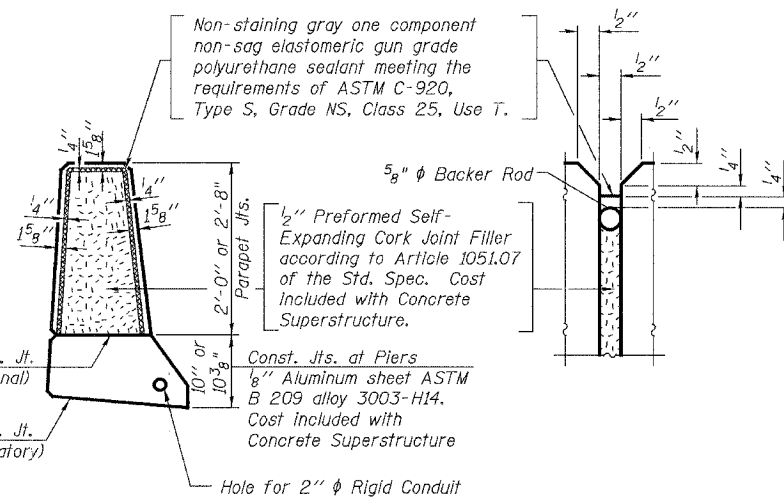
BAR d₆(E)



BAR d₇(E)



ELECTRICAL BOX - CONDUIT DETAILS



PARAPET JOINT DETAILS

20400 PM 04/26/06
 02/28/07 02/28/06 PM
 AND JAMES C. HANSON
 03/12/06
 03/12/06
 03/12/06