

F.A.P. RTE.	SECTION	COUNTY	TOTAL SHEETS	SHEET NO.
525	02-00518-00-BR	WINNEBAGO	157	1

INDEX OF SHEETS

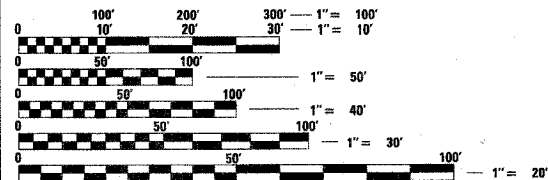
- 1. TITLE SHEET
- 2. SUMMARY OF QUANTITIES
- 3. GENERAL NOTES
- 4. TYPICAL SECTIONS
- 5.-7. ROADWAY REMOVAL PLANS
- 8.-11. ROADWAY PLANS
- 12. DRAINAGE SCHEDULE
- 13.-14. APPROACH PAVEMENT PLANS
- 15.-18. PAVEMENT MARKING & SIGNAGE
- 19. GUARDRAIL PLAN
- 20. ALIGNMENTS AND BENCHMARKS
- 21.-25. EROSION CONTROL PLANS
- 26. CITY OF ROCKFORD STANDARD DETAILS
- 27.-31. LIGHTING PLANS AND DETAILS
- 32.-46. MAINTENANCE OF TRAFFIC
- 47.-57. CROSS SECTIONS
- 58.-107. EASTBOUND BRIDGE PLANS (INCLUDING BORING LOGS)
- 108.-157. WESTBOUND BRIDGE PLANS (INCLUDING BORING LOGS)

HIGHWAY STANDARDS

- 280001-03 TEMPORARY EROSION CONTROL
- 424001-04 CURB RAMP FOR SIDEWALKS
- 420401-05 BRIDGE APPROACH PAVEMENT
- 515001-02 NAME PLATE FOR BRIDGES
- 542301-01 PRECAST REINFORCED CONCRETE FLARED END SECTION
- 601101 CONCRETE HEADWALL FOR PIPE DRAIN
- 602401-01 MANHOLE, TYPE A
- 602701-01 CAST IRON STEPS
- 604001-02 FRAME AND LIDS, TYPE 1
- 606001-03 COMBINATION CONCRETE CURB AND GUTTER
- 631026-03 "TRAFFIC BARRIER TERMINAL, TYPE 5"
- 631031-06 "TRAFFIC BARRIER TERMINAL, TYPE 6"
- 667101 PERMANENT SURVEY MARKERS
- 701602-02 URBAN LANE CLOSURE, MULTILANE, 2W WITH BIDIRECTIONAL LEFT TURN LANE
- 701801-03 LANE CLOSURE, MULTILANE, 1 W OR 2W, CROSSWALK OR SIDEWALK CLOSURE, FOR SPEEDS < 45 MPH
- 702001-06 TRAFFIC CONTROL DEVICES
- 704001-03 TEMPORARY CONCRETE BARRIER
- 720001 SIGN PANEL MOUNTING DETAILS
- 720006-01 SIGN PANEL ERECTION DETAILS
- 720011 METAL POSTS FOR SIGNS, MARKERS & DELINEATORS
- 728001 TELESCOPING STEEL SIGN SUPPORT
- 729001 APPLICATIONS OF TYPES A & B METAL POSTS (FOR SIGNS & MARKERS)
- 780001-01 TYPICAL PAVEMENT MARKINGS
- BLR 21-6 TYPICAL APPLICATION OF TRAFFIC CONTROL DEVICES

CITY OF ROCKFORD STANDARDS

- STANDARD INLET TYPE 700
- INLET SPECIAL NO.'S 1 & 2
- TRENCH BACKFILL DETAIL
- DRIVEWAY DETAIL (5.0' FLARES)
- DRIVEWAY DETAIL
- COMBINATION CURB AND GUTTER, TYPE M-6.18 MODIFIED



FULL SIZE PLANS HAVE BEEN PREPARED USING STANDARD ENGINEERING SCALES. REDUCED SIZED PLANS WILL NOT CONFORM TO STANDARD SCALES. IN MAKING MEASUREMENTS ON REDUCED PLANS, THE ABOVE SCALES MAY BE USED.

J.U.L.I.E.
JOINT UTILITY LOCATION INFORMATION FOR EXCAVATION
1-800-892-0123

CONTRACT NO. 85399

STATE OF ILLINOIS
DEPARTMENT OF TRANSPORTATION
DIVISION OF HIGHWAYS
**PLANS FOR PROPOSED HARRISON AVE.
OVER UPRR AND CC & PRR**

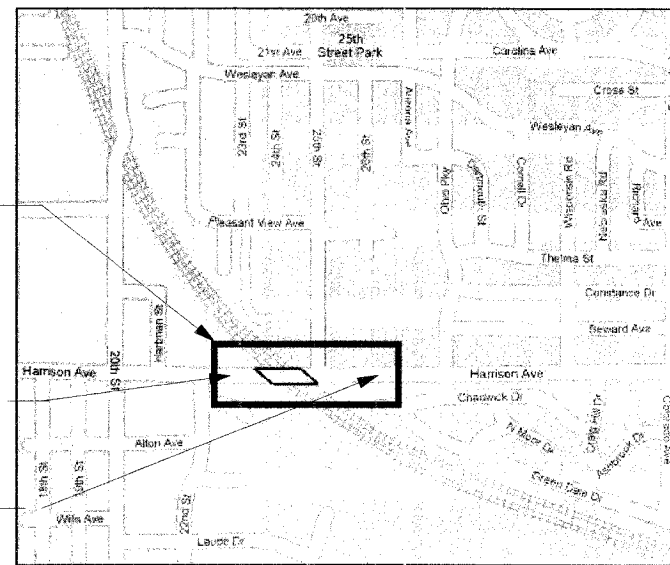
FAP ROUTE 525 (HARRISON AVE.)
SECTION 02-00518-00-BR
PROJECT ACRF-525(106)
WINNEBAGO COUNTY
JOB NO. C-92-081-05
CITY OF ROCKFORD
R. 2 E.

PROJECT LOCATION



LOCATION OF SECTION INDICATED THUS: - [Symbol] -

N
PROJECT LOCATION

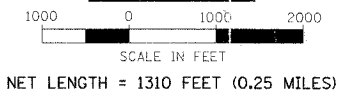


BEGIN IMPROVEMENT
STA. 91 + 50
END IMPROVEMENT
STA. 104 + 60

PROPOSED IMPROVEMENTS:
REMOVAL AND REPLACEMENT OF BOTH THE EXISTING EASTBOUND AND WESTBOUND BRIDGES, WIDEN AND RAISE ROADWAY EMBANKMENT, CONSTRUCT NEW BITUMINOUS CONCRETE PAVEMENT, BITUMINOUS COATED AGGREGATE SLOPEWALL, BRIDGE LIGHTING, BRIDGE APPROACH PAVEMENT, STORM SEWER, COMBINATION CURB AND GUTTER, CONCRETE SIDEWALK, CONCRETE MEDIAN, PAVEMENT MARKINGS, TOPSOIL, SEEDING, AND GUARDRAIL. EXISTING WESTBOUND STRUCTURE NUMBER 101-0097, PROPOSED WESTBOUND STRUCTURE NUMBER 101-6109, EXISTING EASTBOUND STRUCTURE NUMBER 101-0130, PROPOSED EASTBOUND STRUCTURE NUMBER 101-6111.

TRAFFIC DATA:
FUNCTIONAL CLASSIFICATION: ARTERIAL
CURRENT ADT : 20,600 (8% TRUCKS)
2027 ADT : 28,000
DESIGN SPEED : 45 MPH
POSTED SPEED : 45 MPH

LOCATION PLAN



UTILITY NOTE

THE LOCATIONS OF THOSE BURIED AND ABOVEGROUND UTILITIES SHOWN ARE APPROXIMATE, ARE SHOWN FOR CONTRACTOR INFORMATIONAL USE ONLY, AND ARE NOT TO BE REFERENCED FOR CONSTRUCTION PURPOSES. THE IMPLIED PRESENCE OR ABSENCE OF UTILITIES IS NOT TO BE CONSTRUED BY THE OWNER, ENGINEER, CONTRACTOR, OR SUBCONTRACTORS TO BE AN ACCURATE AND COMPLETE REPRESENTATION OF UTILITIES THAT MAY OR MAY NOT EXIST ON THE CONSTRUCTION SITE. BURIED AND ABOVEGROUND UTILITY LOCATION, IDENTIFICATION, AND MARKING ARE THE SOLE RESPONSIBILITY OF THE CONTRACTOR. REROUTING, DISCONNECTION, PROTECTION, ETC. OF ANY UTILITIES MUST BE COORDINATED AMONG THE CONTRACTOR, UTILITY COMPANY, AND OWNER. SITE SAFETY, INCLUDING THE AVOIDANCE OF HAZARDS, ASSOCIATED WITH BURIED AND ABOVEGROUND UTILITIES REMAIN THE SOLE RESPONSIBILITY OF THE CONTRACTOR.

CHARLES P. SMITH
PROFESSIONAL ENGINEER
STATE OF ILLINOIS
12/14/06
LIC. EXP. DATE : 11/30/2007
SHEETS 1 THRU 26
SHEETS 47 THRU 57

PAUL J. TUSIGN
PROFESSIONAL ENGINEER
STATE OF ILLINOIS
12/14/06
LIC. EXP. DATE : 11/30/2007
SHEETS 27 THRU 31

RAUL CANTU
PROFESSIONAL ENGINEER
STATE OF ILLINOIS
12/14/06
LIC. EXP. DATE : 11/30/2007
SHEETS 32 THRU 46

FRANCIS L. NAUMAN
PROFESSIONAL ENGINEER
STATE OF ILLINOIS
12/14/06
LIC. EXP. DATE : 11/30/2006
SHEETS 58 THRU 157

© Copyright Hanson Professional Services Inc. 2006
HANSON
HANSON PROFESSIONAL SERVICES INC.
6775 FINCHAM DRIVE
ROCKFORD, IL 61108-3001

ILLINOIS DESIGN FIRM
LICENSE NO: 184-001-084

APPROVED *Barry M. Jensen* 12/14 2006
Senior Civil Engineer
City of Rockford, IL
LOCAL AGENCY OFFICIAL

PASSED *Joseph T. Johnson* January 3 2007
DISTRICT ENGINEER OF LOCAL ROADS & STREETS

RELEASED FOR LIMITED REVIEW *Joseph E. Cromer* January 3 2007
DEPUTY DIRECTOR REGION 2 ENGINEER

STATE OF ILLINOIS
DEPARTMENT OF TRANSPORTATION

PRINTED BY THE AUTHORITY
OF THE STATE OF ILLINOIS