

ROUTE NO.	SECTION	COUNTY	SHEET	SHEET NO.
FAP 0525	*	WINNEBAGO	157	73
FED. ROAD DIST. NO. 7				ILL. ROAD DIST. NO. 157
* 02-00518-00-BR				

**SUPERSTRUCTURE BILL OF MATERIAL**

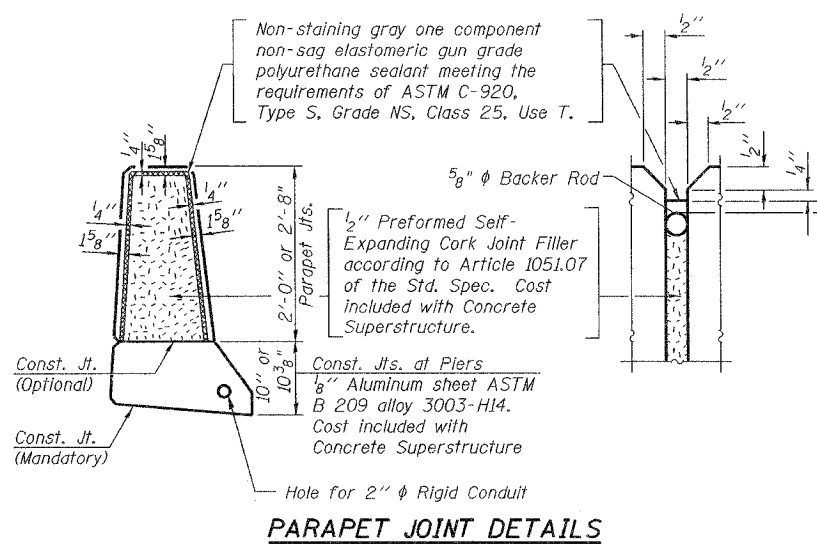
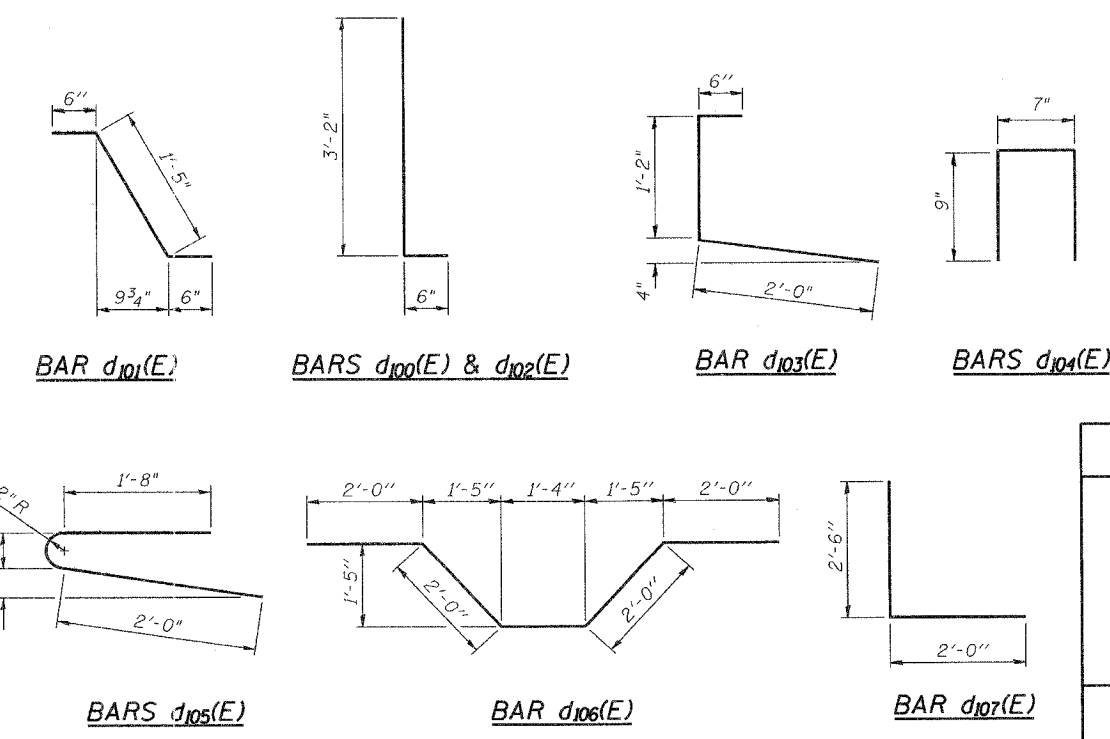
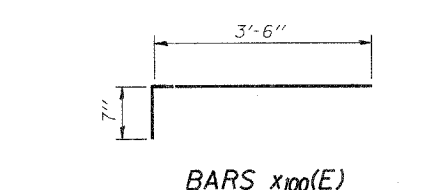
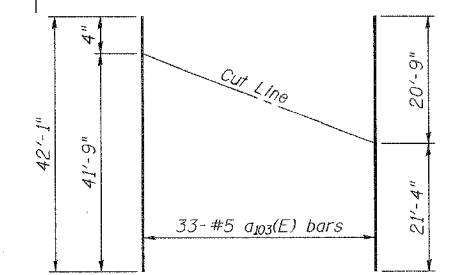
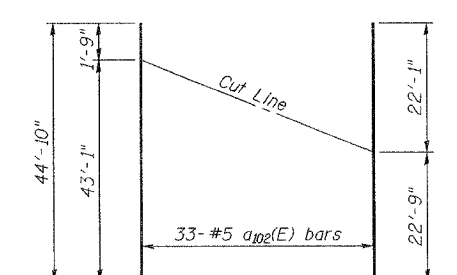
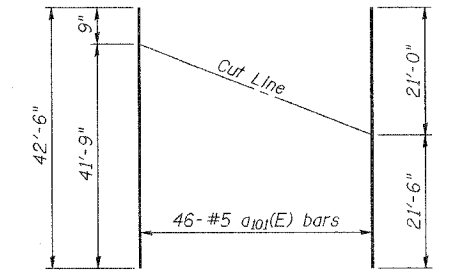
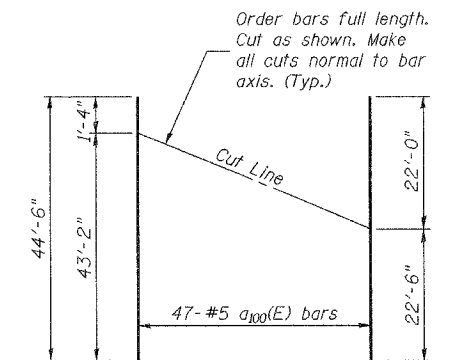
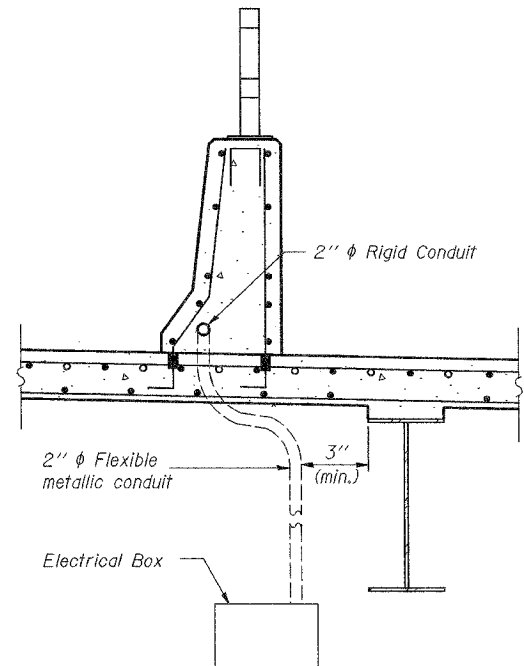
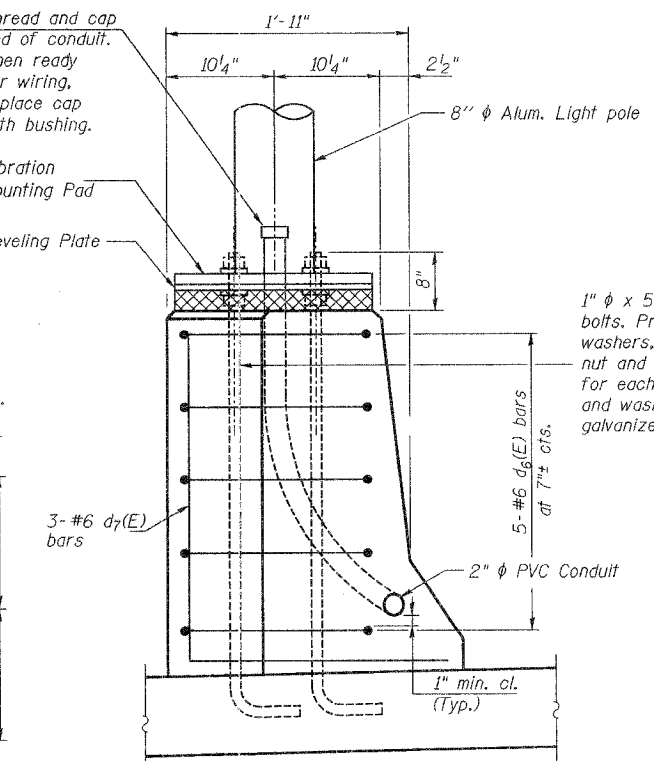
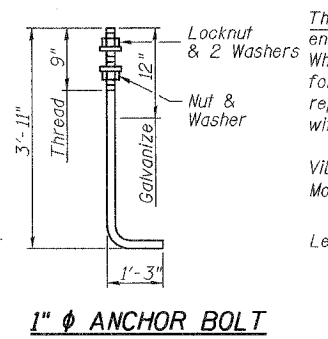
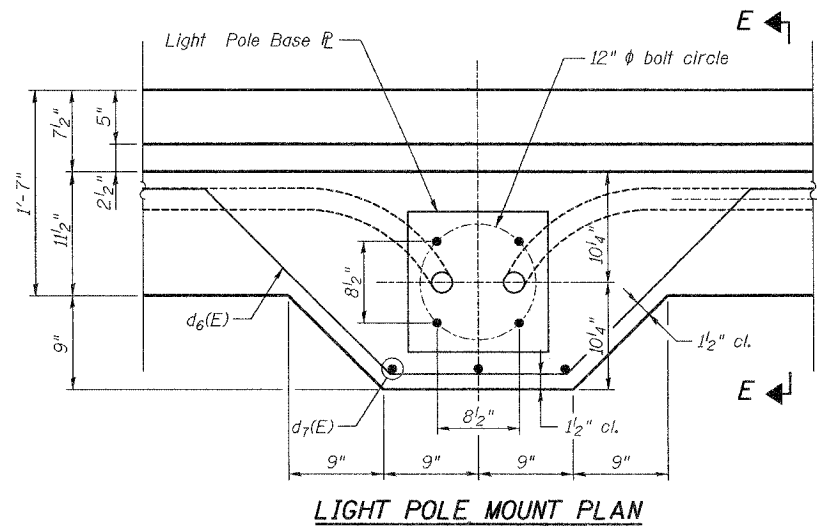
Bar	No.	Size	Length	Shape
a <sub>100</sub> (E)	47	#5	44'-6"	
a <sub>101</sub> (E)	46	#5	42'-6"	
a <sub>102</sub> (E)	33	#5	44'-10"	
a <sub>103</sub> (E)	33	#5	42'-1"	
a <sub>104</sub> (E)	4	#5	32'-6"	
a <sub>105</sub> (E)	4	#5	33'-5"	
a <sub>106</sub> (E)	1262	#5	43'-3"	
a <sub>107</sub> (E)	417	#6	4'-6"	
b <sub>100</sub> (E)	598	#5	34'-2"	
b <sub>101</sub> (E)	88	#6	28'-7"	
b <sub>102</sub> (E)	176	#6	25'-3"	
b <sub>103</sub> (E)	88	#6	31'-10"	
b <sub>104</sub> (E)	644	#5	31'-11"	
d <sub>100</sub> (E)	455	#5	3'-8"	
d <sub>101</sub> (E)	455	#5	2'-5"	
d <sub>102</sub> (E)	455	#4	3'-8"	
d <sub>103</sub> (E)	455	#4	3'-8"	
d <sub>104</sub> (E)	200	#4	2'-1"	
d <sub>105</sub> (E)	455	#4	4'-5"	
d <sub>106</sub> (E)	15	#6	9'-4"	
d <sub>107</sub> (E)	9	#6	4'-6"	
e <sub>100</sub> (E)	12	#4	15'-10"	
e <sub>101</sub> (E)	42	#4	13'-8"	
e <sub>102</sub> (E)	28	#4	14'-6"	
e <sub>103</sub> (E)	56	#4	18'-5"	
e <sub>104</sub> (E)	28	#4	13'-1"	
e <sub>105</sub> (E)	14	#4	15'-5"	
e <sub>106</sub> (E)	14	#4	16'-3"	
e <sub>107</sub> (E)	28	#4	12'-3"	
e <sub>108</sub> (E)	56	#4	18'-0"	
e <sub>109</sub> (E)	28	#4	16'-1"	
e <sub>110</sub> (E)	70	#4	15'-11"	
x <sub>100</sub> (E)	92	#5	4'-1"	

Bar	No.	Size	Length	Shape
e <sub>111</sub> (E)	2	#8	32'-0"	
e <sub>112</sub> (E)	4	#8	41'-6"	
e <sub>113</sub> (E)	8	#8	14'-6"	
e <sub>114</sub> (E)	12	#8	27'-4"	
e <sub>115</sub> (E)	8	#8	13'-1"	
e <sub>116</sub> (E)	4	#8	15'-5"	
e <sub>117</sub> (E)	4	#8	15'-3"	
e <sub>118</sub> (E)	8	#8	12'-3"	
e <sub>119</sub> (E)	12	#8	26'-9"	
e <sub>120</sub> (E)	8	#8	16'-1"	
e <sub>121</sub> (E)	12	#8	29'-6"	
e <sub>122</sub> (E)	2	#5	30'-6"	
e <sub>123</sub> (E)	2	#5	40'-0"	
e <sub>124</sub> (E)	8	#5	14'-6"	
e <sub>125</sub> (E)	12	#5	26'-0"	
e <sub>126</sub> (E)	8	#5	13'-1"	
e <sub>127</sub> (E)	4	#5	15'-5"	
e <sub>128</sub> (E)	4	#5	16'-3"	
e <sub>129</sub> (E)	8	#5	12'-3"	
e <sub>130</sub> (E)	12	#5	25'-5"	
e <sub>131</sub> (E)	8	#5	16'-1"	
e <sub>132</sub> (E)	6	#5	27'-7"	
e <sub>133</sub> (E)	6	#5	28'-1"	
e <sub>134</sub> (E)	2	#5	41'-6"	
e <sub>135</sub> (E)	12	#4	16'-4"	
e <sub>136</sub> (E)	2	#8	32'-11"	
e <sub>137</sub> (E)	2	#5	31'-5"	

Reinforcement Bars, Epoxy Coated	Pound	143,020
Concrete Superstructure	Cu. Yds.	584.1
Bridge Deck Grooving	Sq. Yds.	1205
Protective Coat	Sq. Yds.	2760
Floor Drains	Each	3



**NOTES**

Work this sheet with Sheets 10 thru 15 of 50. Bar indicated thus 20x3-#5 etc. indicates 20 lines of bars with 3 lengths per line. For light pole spacing see Sheet 13 of 50. Reinforcement bars designated (E) shall be epoxy coated. Cost of anchor bolts is included with Concrete Superstructure. Conduit shall not be placed in parapet until reinforcement is set.

Corporate License Number 184-001-084

**SUPERSTRUCTURE DETAILS**

EASTBOUND HARRISON AVENUE  
OVER UP & CC&P RAILROAD  
F.A.P. ROUTE 0525  
SECTION 02-00518-00-BR  
ROCKFORD, ILLINOIS  
STATION 95+72.00  
STRUCTURE NO. 101-6111

© Copyright Hanson Professional Services Inc. 2006

**HANSON**

PROJ. NO. 03R1751  
DATE 12/14/06

LAYOUT: KR 02/01/06  
 DRAWN: MVA 02/02/06  
 REVIEWED: ELN 02/04/06  
 10/15/09 AM  
 12/14/09 AM  
 10/31/09 03:57:51 StructureSheet-Eastbound S-016-EB-Super-BrM.dgn