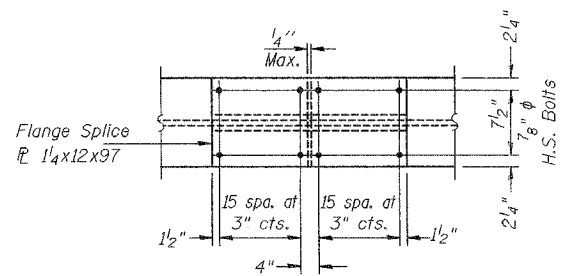
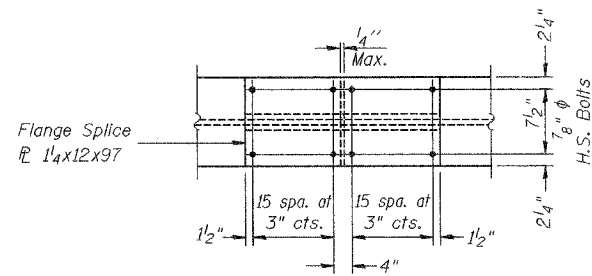


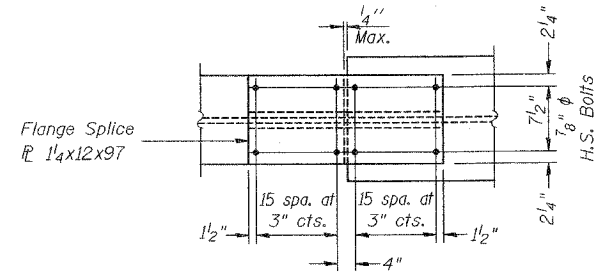
ROUTE NO.	SECTION	COUNTY	DATE	SHEET
FAP 0525	*	WINNEBAGO	157	81
SHEET NO. 24				
50 SHEETS				
FED. ROAD DIST. NO. 7				
ILLINOIS FED. AID PROJECT				
• 02-00518-00-BR				



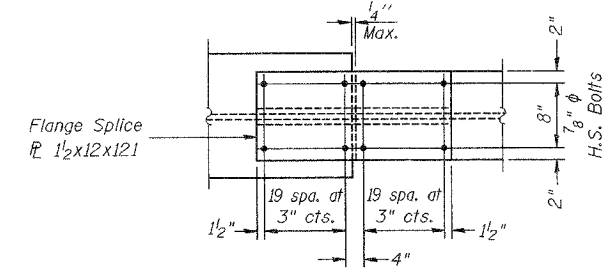
TOP & BOTTOM FLANGE



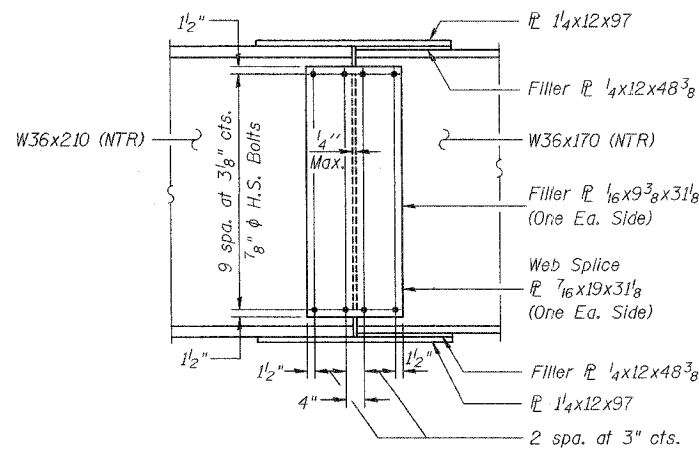
TOP & BOTTOM FLANGE



TOP & BOTTOM FLANGE



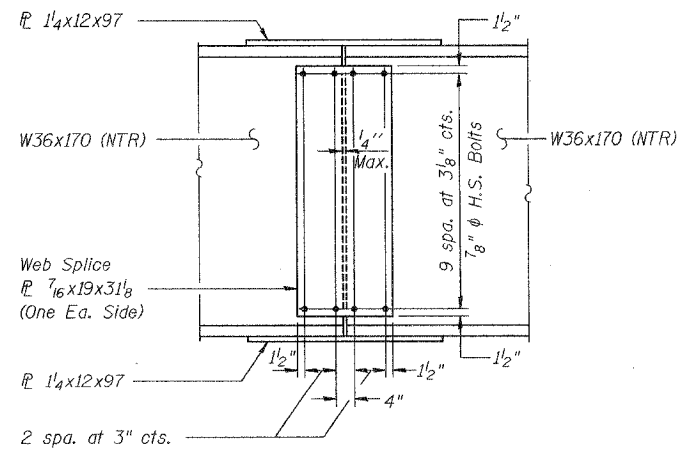
TOP & BOTTOM FLANGE



WEB

SPLICE #1 DETAIL

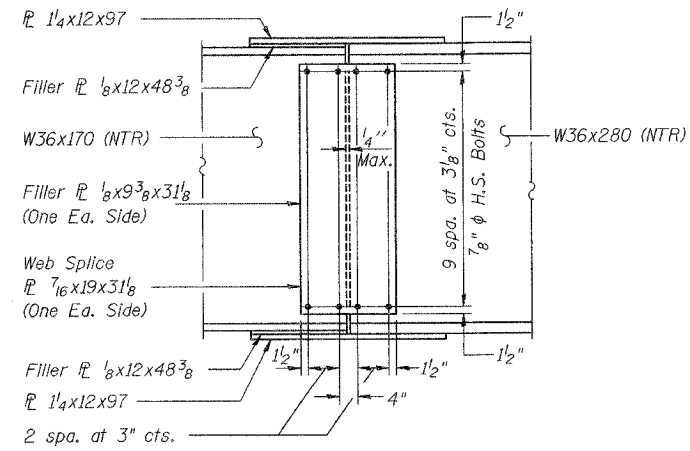
(Looking North)



WEB

SPLICE #2 & #3 DETAIL

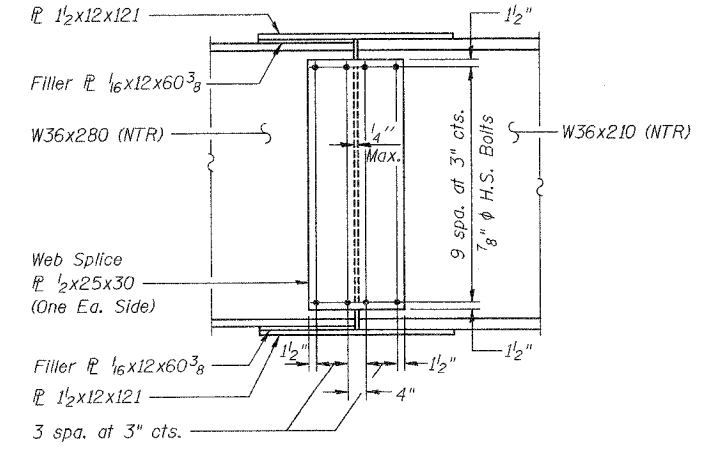
(Looking North)



WEB

SPLICE #4 DETAIL

(Looking North)



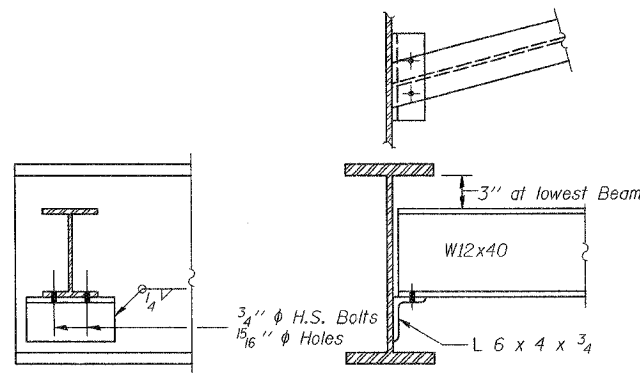
WEB

SPLICE #5 DETAIL

(Looking North)

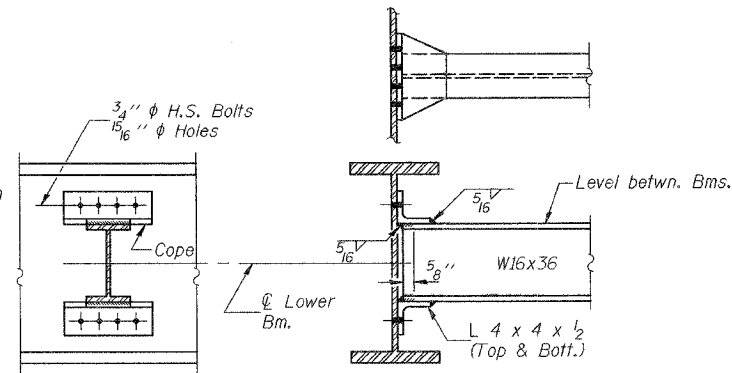
NOTES

Notch Toughness Requirements are applicable to all splice plates except fill plates.  
 All splice plates shall be AASHTO M270, Grade 50, except fill plates.  
 All bolts are 7/8"  $\phi$  H.S., open holes 15/16"  $\phi$ .  
 Work this Sheet with Sheets 22, 23, and 25 of 50.



DIAPHRAGM D

10 Required



DIAPHRAGM D1

115 Required

Note: Two hardened washers shall be required over all oversize holes for diaphragms.

946440 AM  
 12/13/2006, 06:09:48 AM  
 I:\03\1003\0317\10\Struct\Steel\East Bound\S-02-EE-Sp-Det.dgn

LAYOUT: S.L.G. 02/07/06  
 DRAWN: M.W.J.R. 01/24/06  
 REVIEWED: P.L.N. 08/09/06

Corporate License Number 184-001-084

STRUCTURAL STEEL DETAILS

EASTBOUND HARRISON AVENUE  
 OVER UP & CC&P RAILROAD  
 F.A.P. ROUTE 0525  
 SECTION 02-00518-00-BR  
 ROCKFORD, ILLINOIS  
 STATION 95+72.00  
 STRUCTURE NO. 101-6111

© Copyright Hanson Professional Services Inc. 2006



03R1751

DATE  
 12/14/06