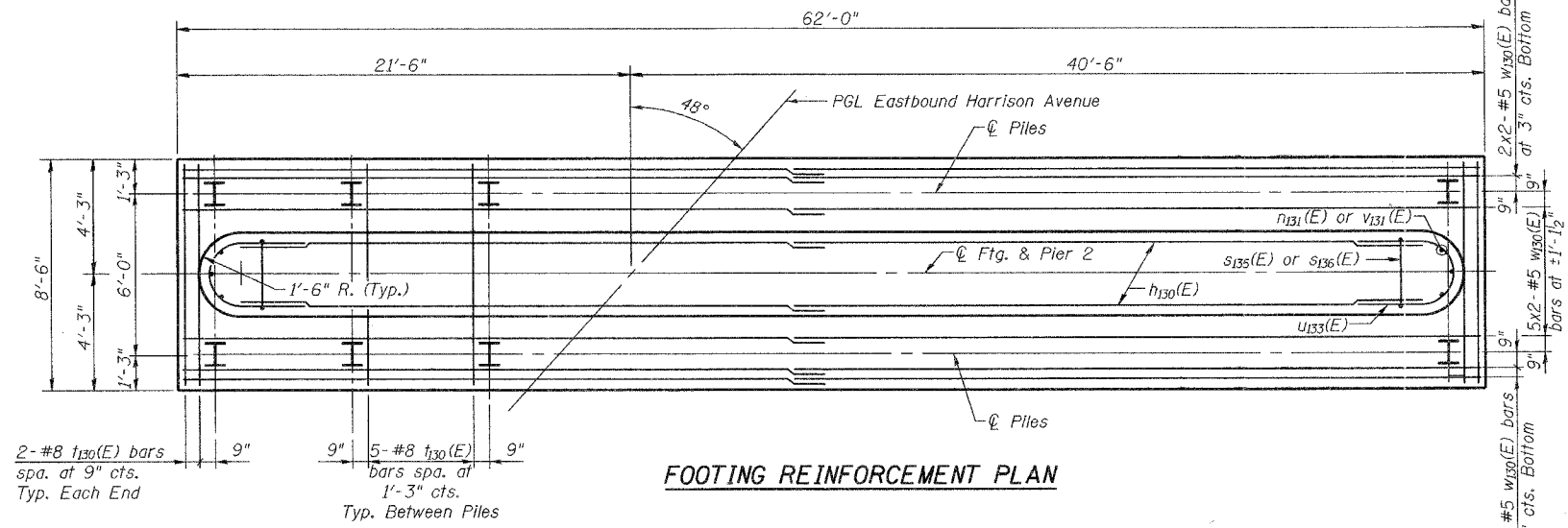
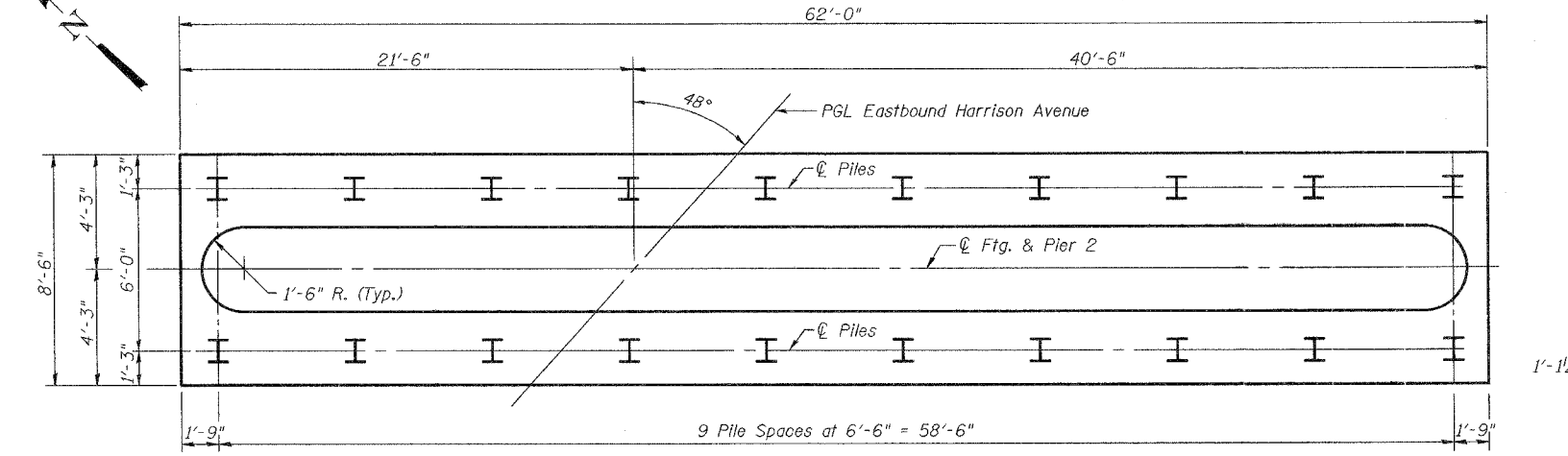


ROUTE NO.	SECTION	COUNTY	DATE	SHEET NO.
FAP 0525	*	WINNEBAGO	157	96
FED. ROAD DIST. NO. 7				
BALANCE: 50 SHEETS				
* 02-00518-00-BP				

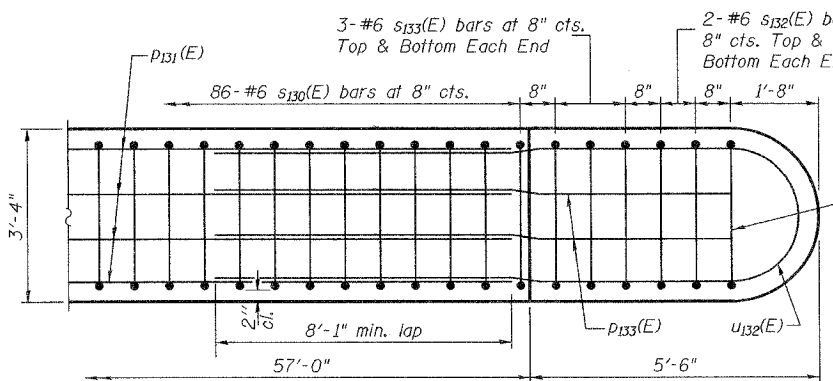


FOOTING REINFORCEMENT PLAN

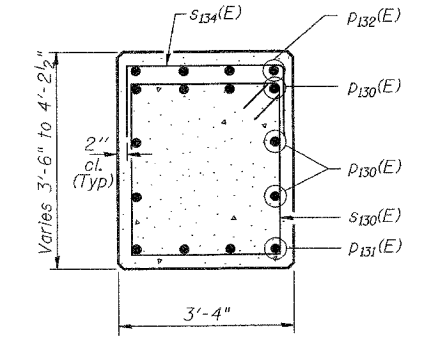


FOOTING PILE PLAN

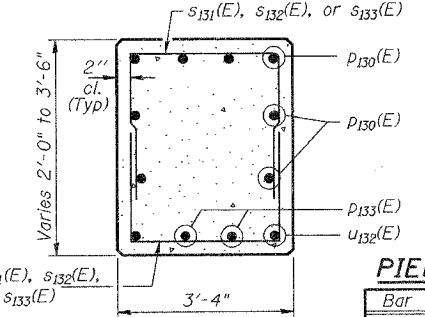
PILE DATA
 Type & Size: HP 12x53 w/ Pile Shoes
 Nominal Required Bearing: 420 Kips
 Allowable Resistance Available: 140 Kips
 Est. Length: 19'
 No. Req'd: 19 + 1 Test Pile



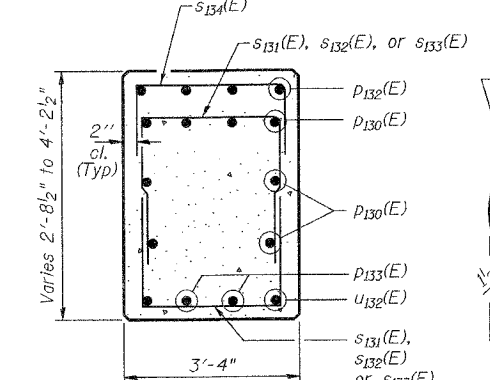
**DETAIL A
REFLECTED UNDERSIDE PLAN OF PIER CAP END**



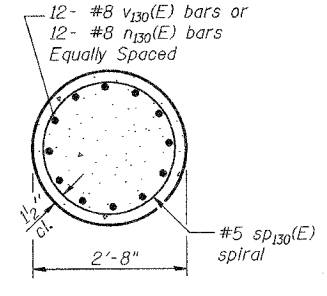
SECTION A-A



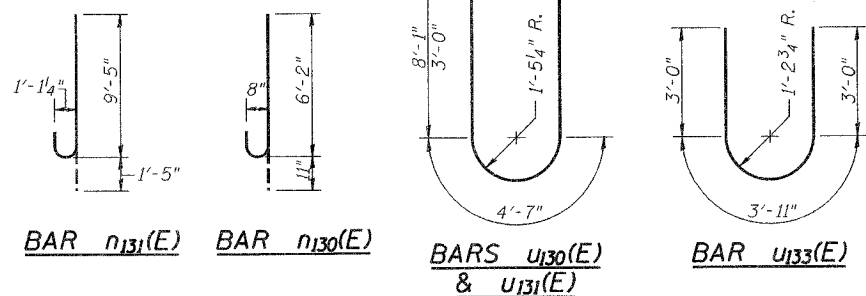
SECTION B-B



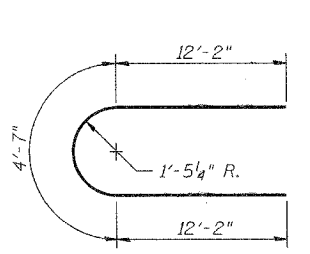
SECTION C-C



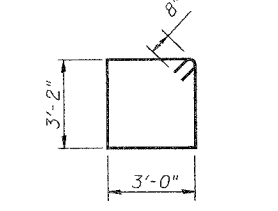
SECTION D-D



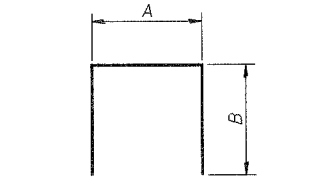
BAR n131(E) BAR n130(E) BARS u130(E) & u131(E) BAR u133(E)



BAR u132(E)



BAR s130(E)



BARS s131(E) thru s136(E)

A & B DIMENSIONS

Bar	A	B
s131(E)	3'-0"	2'-1"
s132(E)	3'-0"	2'-3"
s133(E)	3'-0"	2'-6"
s134(E)	3'-0"	2'-1"
s135(E)	2'-8"	6'-2"
s136(E)	2'-8"	9'-1"

MINIMUM BAR LAP

HORIZONTAL
 #5 - 2'-2" (Bottom of Footing)
 #5 - 3'-0"
 #9 - 8'-1"

NOTES
 Work this sheet with Sheet 38 of 50.
 Reinforcement Bars designated (E) shall be epoxy coated.
 Bar indicated thus 1x2 - #5 etc. indicates 1 line of bar with 2 lengths per line.
 * Length is spiral height.

PIER 2 BILL OF MATERIAL

Bar	No.	Size	Length	Shape
n130(E)	22	#5	29'-6"	—
n130(E)	72	#8	7'-1"	U
n131(E)	6	#10	10'-10"	U
p130(E)	16	#9	36'-5"	—
p131(E)	8	#9	32'-7"	—
p132(E)	4	#5	21'-1"	—
p133(E)	4	#9	12'-0"	—
s130(E)	86	#6	13'-8"	U
s131(E)	4	#6	7'-2"	U
s132(E)	8	#6	7'-6"	U
s133(E)	12	#6	8'-0"	U
s134(E)	22	#5	7'-2"	U
s135(E)	57	#10	15'-0"	U
s136(E)	57	#10	20'-10"	U
* sp130(E)	6	#5	13'-2"	W
t130(E)	49	#8	8'-2"	—
u130(E)	4	#9	20'-9"	U
u131(E)	1	#5	10'-7"	U
u132(E)	2	#9	28'-11"	U
u133(E)	10	#5	9'-11"	U
v130(E)	72	#8	15'-0"	—
v131(E)	6	#10	6'-2"	—
w130(E)	18	#5	31'-11"	—
Concrete Structures	Cu. Yd.	147.2		
Reinforcement Bars, Epoxy Coated	Pound	23,970		
Structure Excavation	Cu. Yd.	249.7		
Furnishing Steel Piles, HP 12x53	Foot	361		
Driving Piles	Foot	361		
Pile Shoes	Each	20		
Test Pile Steel HP 12x53	Each	1		
Anchot Bolts, 1 1/2"	Each	12		

Corporate License Number 184-001-084

PIER 2 DETAILS

**EASTBOUND HARRISON AVENUE
OVER UP & CC&P RAILROAD
F.A.P. ROUTE 0525
SECTION 02-00518-00-BR
ROCKFORD, ILLINOIS
STATION 95+72.00
STRUCTURE NO. 101-6111**

© Copyright Hanson Professional Services Inc. 2006



JOB NO.
03R1751
DATE
12/14/06

3:24:21 PM 12/12/06 03:24 PM P:\03\proj\03R1751\Struct\Sheet\East Bound\5-039-EP-Pier 2D.dwg
 LAYOUT JMR 3/01/06
 DRAWN MMW/JMR 7/24/06
 REVISIONS FLN 08/04/06