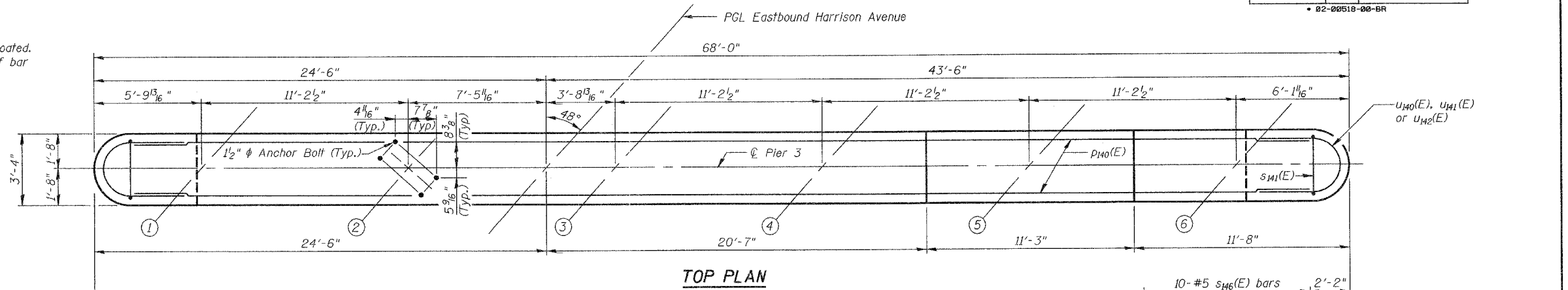


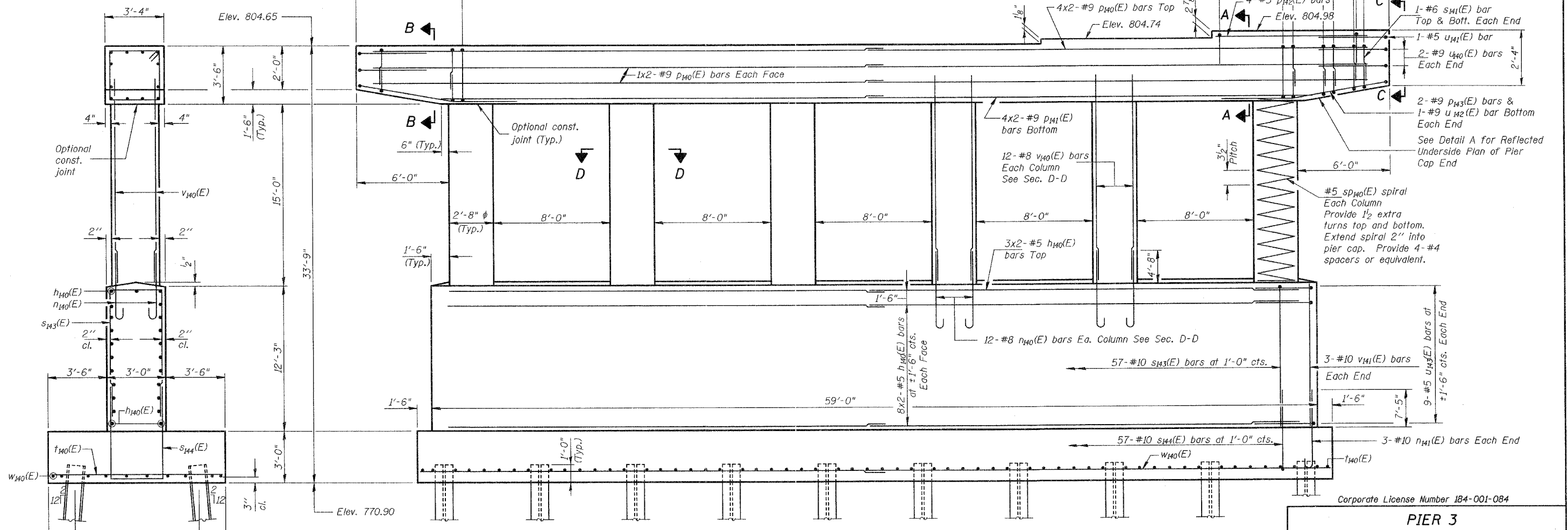
ROUTE NO.	SECTION	COUNTY	SHEET	SHEET NO. 40
FAP 0525		WINNEBAGO	157	50 SHEETS
FED. ROAD DIST. NO. 7	ILLINOIS	FED. AID PROJECT		
• 02-00518-00-BR				

NOTES

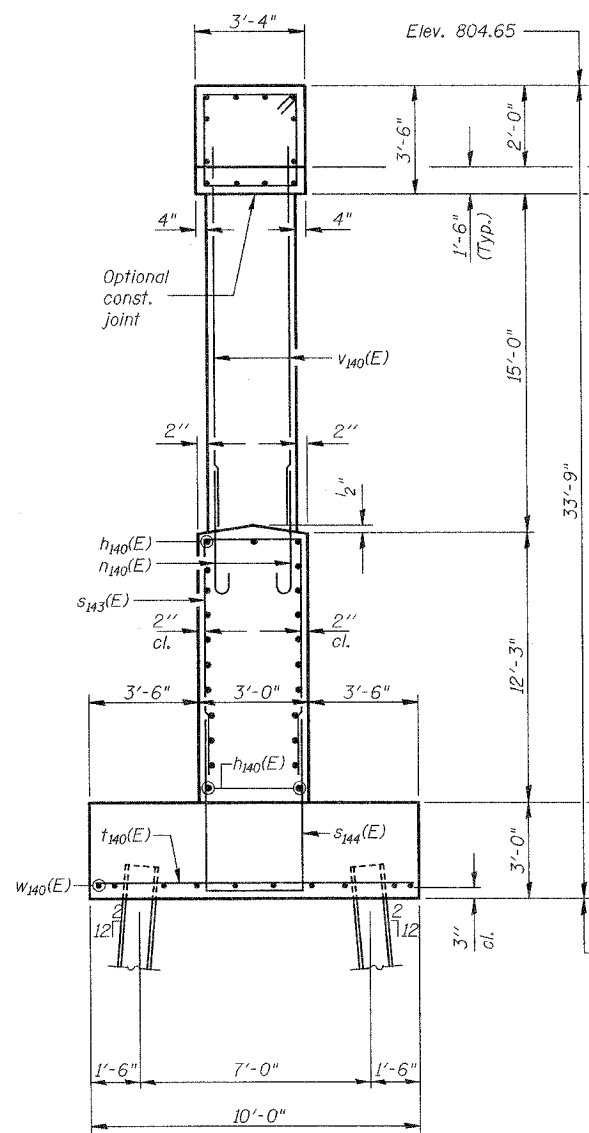
Space Reinforcement in cap to miss anchor bolts.
 Pour steps monolithically with cap.
 Work this sheet with Sheet 41 of 50.
 Reinforcement Bars designated (E) shall be epoxy coated.
 Bar indicated thus 1x2 - #5 etc. indicates 1 line of bar with 2 lengths per line.



TOP PLAN



ELEVATION
(Looking Northeast)



END VIEW

MINIMUM BAR LAP

HORIZONTAL

- #5 - 2'-2" (Bottom of Footing)
- #5 - 3'-0"
- #9 - 8'-1"

Corporate License Number 184-001-084

PIER 3

EASTBOUND HARRISON AVENUE
 OVER UP & CC&P RAILROAD
 F.A.P. ROUTE 0525
 SECTION 02-00518-00-BR
 ROCKFORD, ILLINOIS
 STATION 95+72.00
 STRUCTURE NO. 101-6111

© Copyright Hanson Professional Services Inc. 2008



03R1751

12/14/06

3-4616 FM
 12/12/06 03:46 PM
 I:\03\05\03\17\Struct\Sheet\East Bound\040-EB-Pier3.dgn

LAYOUT	CHK	3/01/06
DRAWN	MM/AM	7/24/06
REVIEWED	FLN	08/04/06