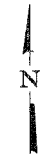
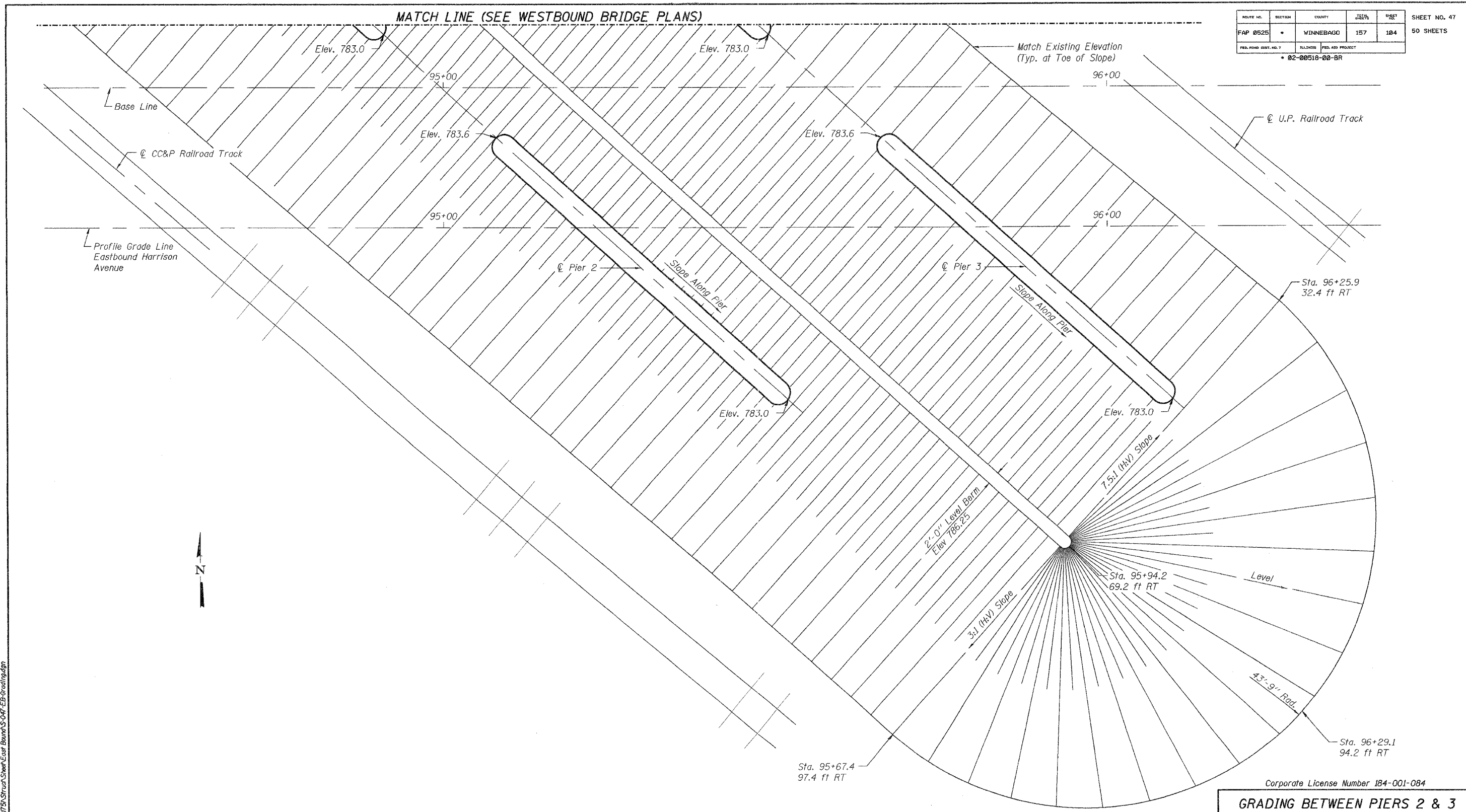


ROUTE NO.	SECTION	COUNTY	TOWNSHIP	RANGE	SHEET NO.
FAP 0525		WINNEBAGO	157	104	47
FED. ROAD DIST. NO. 7					50 SHEETS
FED. ROAD DIST. NO. 7					
FED. AID PROJECT					
02-00518-00-BR					



PLAN

NOTES
 Stationing and offset are defined with respect to the Base Line.

Corporate License Number 184-001-084

GRADING BETWEEN PIERS 2 & 3

EASTBOUND HARRISON AVENUE
 OVER UP & CC&P RAILROAD
 F.A.P. ROUTE 0525
 SECTION 02-00518-00-BR
 ROCKFORD, ILLINOIS
 STATION 95+72.00
 STRUCTURE NO. 101-6111

© Copyright Hanson Professional Services Inc. 2006

HANSON

03R1751
 DATE: 12/14/06

2:44:49 PM 12/12/2006 02:44 PM
 I:\03\00518\05\Struct\Sheet\East\Bridg\S-07-EB-Grading.dgn
 LAYOUT: JKR 10/7/06/06
 DRAWN: JKR 10/7/06/06
 REVIEWED: FLN 10/9/06/06