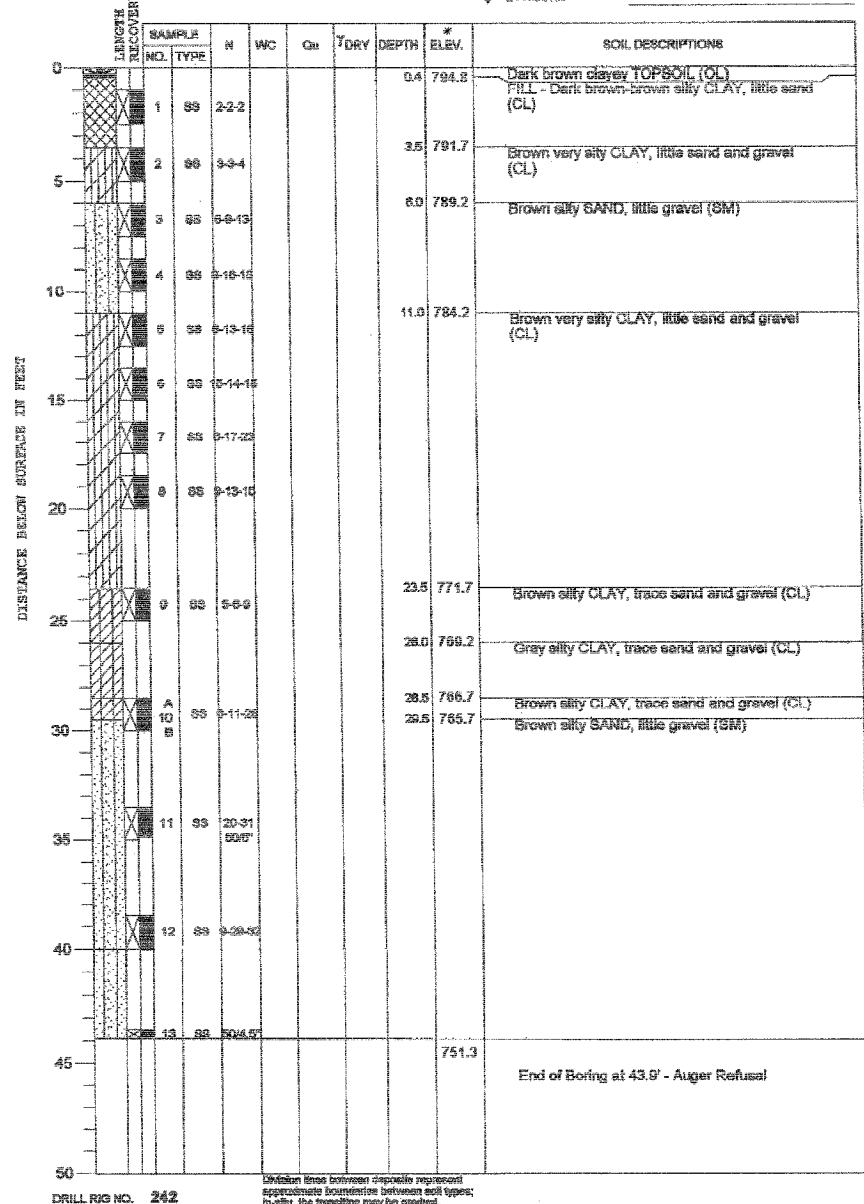


ROUTE NO.	SECTION	COUNTY	SHEET	SHEET NO.
FAP 0525	*	WINNEBAGO	157	105
FED. ROAD DIST. NO. 7		ILLINOIS	FED. AID PROJECT	
* 02-00518-00-BR				

PROJECT **Harrison Avenue Bridge over UP and CN Railroads, Rockford, Illinois**
 CLIENT **Hanson Professional Services, Inc., 1525 S. Sixth St., Springfield, IL 62703**
 BORING **B-1** DATE STARTED **3-4-04** DATE COMPLETED **3-4-04** JOB **L-59,708**



ELEVATIONS WATER TABLE
 GROUND SURFACE **795.2 *** WHILE DRILLING **DRY**
 END OF BORING **751.3 *** AT END OF BORING **DRY**
 24 HOURS

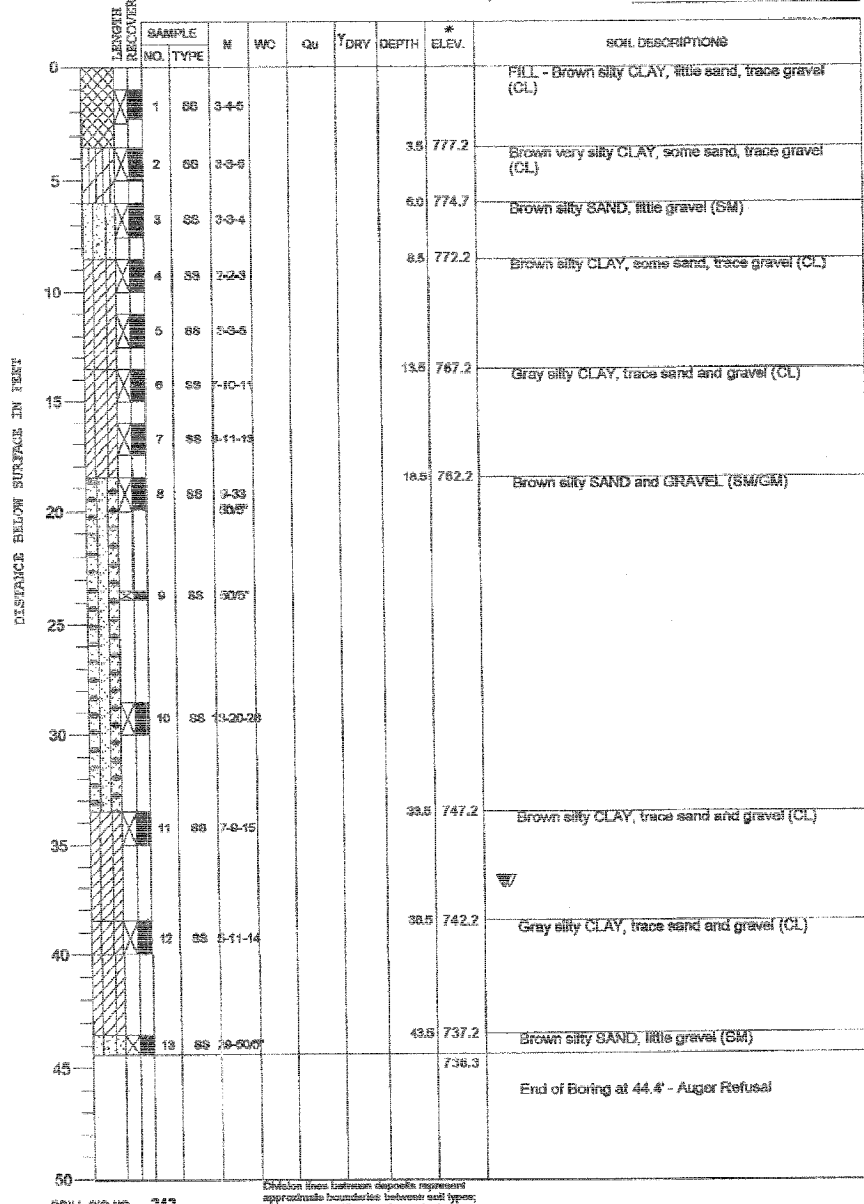


BORING LOG #1

PROJECT **Harrison Avenue Bridge over UP and CN Railroads, Rockford, Illinois**
 CLIENT **Hanson Professional Services, Inc., 1525 S. Sixth St., Springfield, IL 62703**
 BORING **B-2** DATE STARTED **3-2-04** DATE COMPLETED **3-2-04** JOB **L-59,708**



ELEVATIONS WATER TABLE
 GROUND SURFACE **780.7 *** WHILE DRILLING **37'**
 END OF BORING **736.3 *** AT END OF BORING **37'**
 24 HOURS



BORING LOG #2

* - All elevations provided by Hanson Professional Services Inc.

Corporate License Number 184-001-084

BORING LOGS #1 & #2

EASTBOUND HARRISON AVENUE
 OVER UP & CC&P RAILROAD
 F.A.P. ROUTE 0525
 SECTION 02-00518-00-BR
 ROCKFORD, ILLINOIS
 STATION 95+72.00
 STRUCTURE NO. 101-6111

© Copyright Hanson Professional Services Inc. 2006



JOB NO. 03R1751
 DATE 12/14/06

1:55:43 PM 12/13/2006 06:55 PM
 I:\03\proj\03R1751\Struct\Sheet\East\Boring\048-EB-SB-1.dgn
 LAYOUT: MCM 05/20/05
 DRAWN: MCM 09/06/05
 REVIEWED: FLN 08/05/06