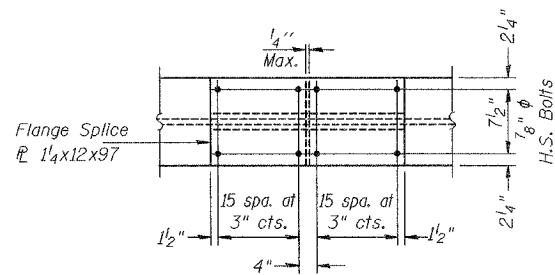
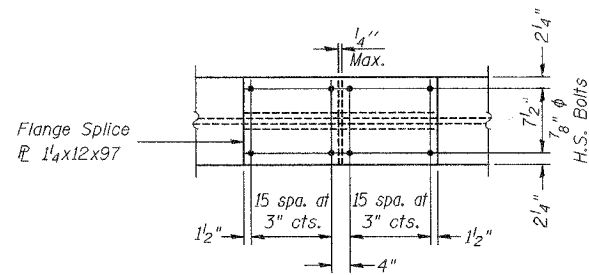


ROUTE NO.	SECTION	COUNTY	TOTAL SHEETS	SHEET NO.
FAP 0525		WINNEBAGO	157	131
FED. ROAD DIST. NO. 7	ILLINOIS	FED. AID PROJECT		
02-00518-00-BR				

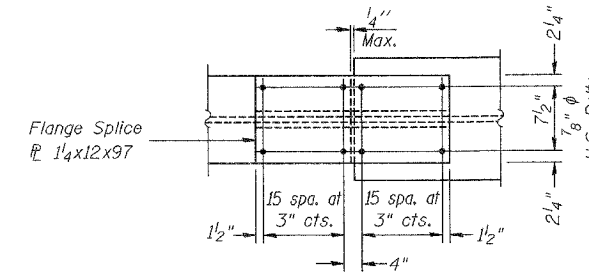
SHEET NO. 24
50 SHEETS



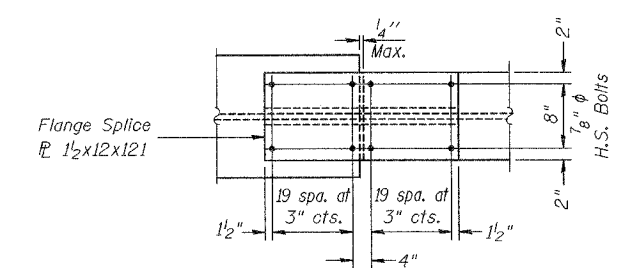
TOP & BOTTOM FLANGE



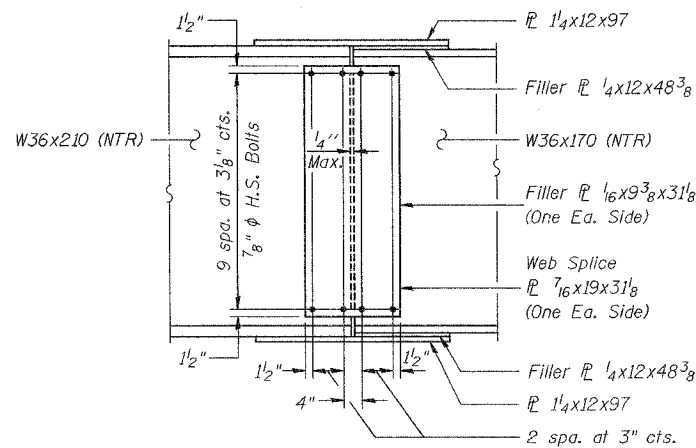
TOP & BOTTOM FLANGE



TOP & BOTTOM FLANGE



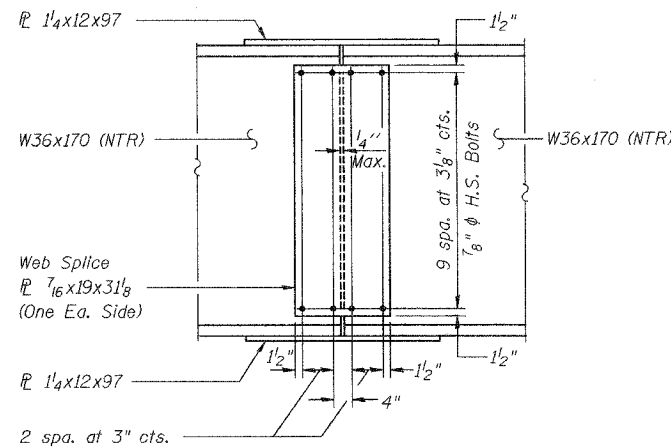
TOP & BOTTOM FLANGE



WEB

SPLICE #1 DETAIL

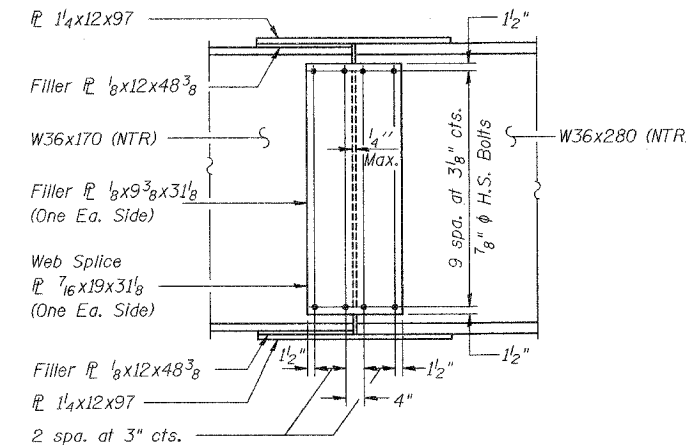
(Looking North)



WEB

SPLICE #2 & #3 DETAIL

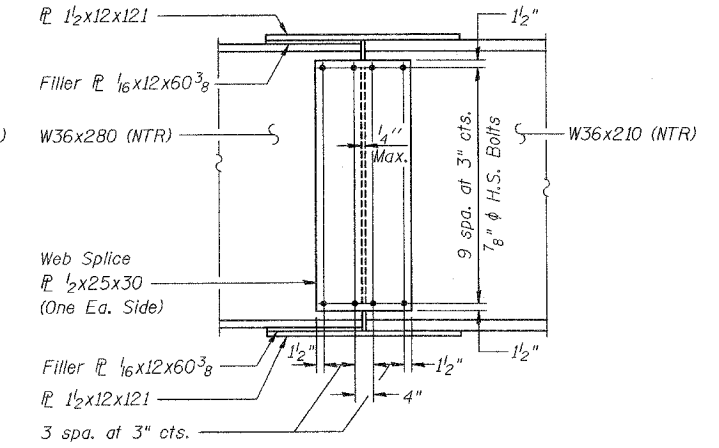
(Looking North)



WEB

SPLICE #4 DETAIL

(Looking North)



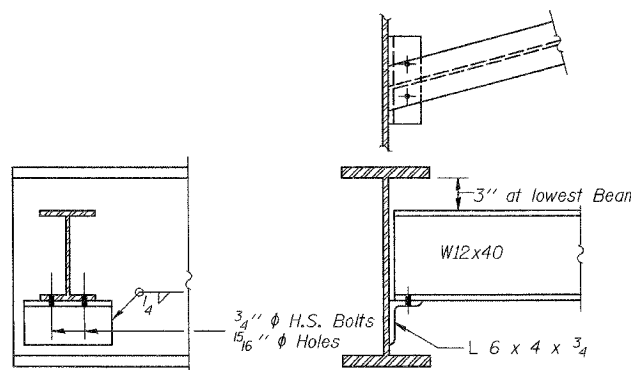
WEB

SPLICE #5 DETAIL

(Looking North)

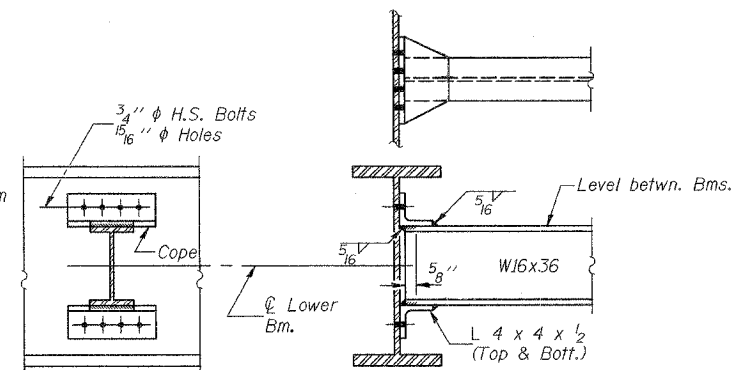
NOTES

Notch Toughness Requirements are applicable to all splice plates except fill plates.
All splice plates shall be AASHTO M270, Grade 50, except fill plates.
All bolts are 7/8" φ H.S., open holes 15/16" φ.
Work this Sheet with Sheets 22, 23, and 25 of 50.



DIAPHRAGM D

8 Required



DIAPHRAGM DI

92 Required

Note: Two hardened washers shall be required over all oversize holes for diaphragms.

Corporate License Number 184-001-084

STRUCTURAL STEEL DETAILS
WESTBOUND HARRISON AVENUE
OVER UP & CC&P RAILROAD
F.A.P. ROUTE 0525
SECTION 02-00518-00-BR
ROCKFORD, ILLINOIS
STATION 95+25.35
STRUCTURE NO. 101-6109

© Copyright Hanson Professional Services Inc. 2006



JOB NO.
03R1751
DATE
12/14/06

12:36:30 PM 12/14/06 12:36 PM 12/14/06
12:36:30 PM 12/14/06 12:36 PM 12/14/06
12:36:30 PM 12/14/06 12:36 PM 12/14/06

LAYOUT
DRAWN
REVIEWED
CHK
MMJ/ARJ
EIN
04/01/06
07/13/06
08/02/06