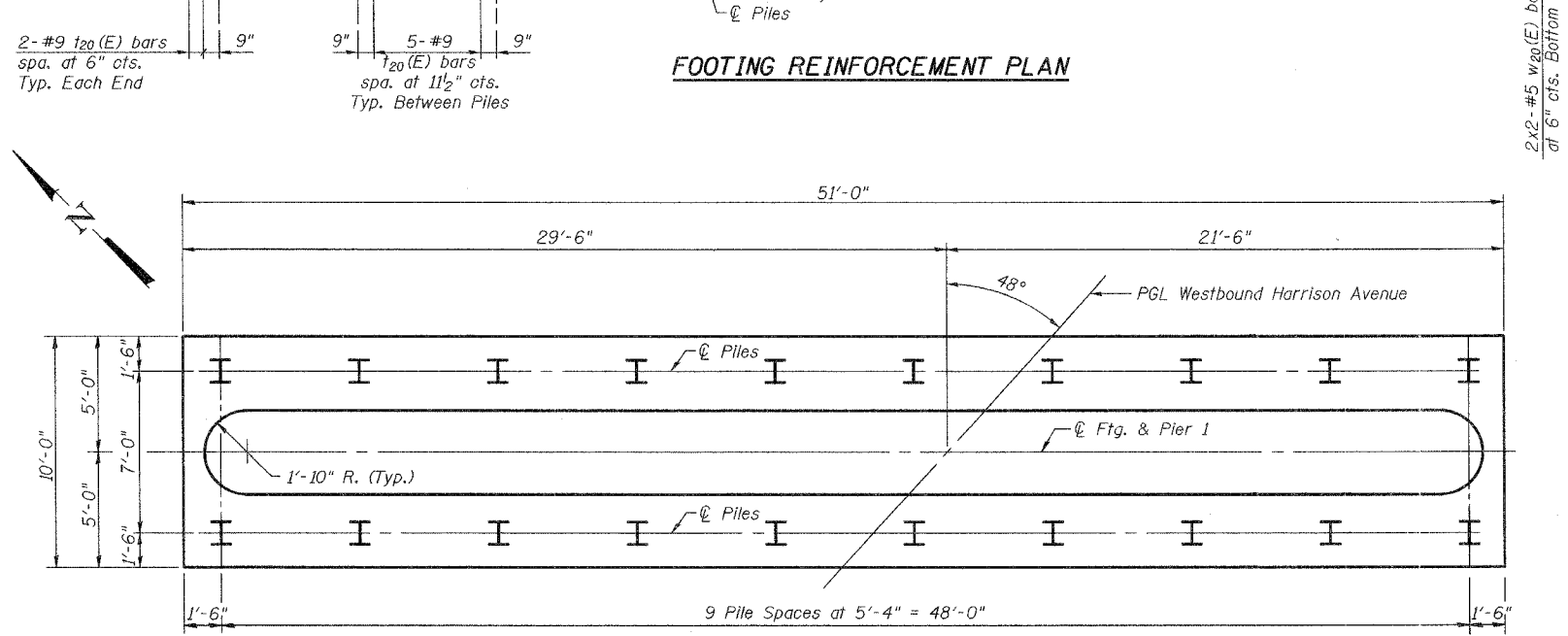
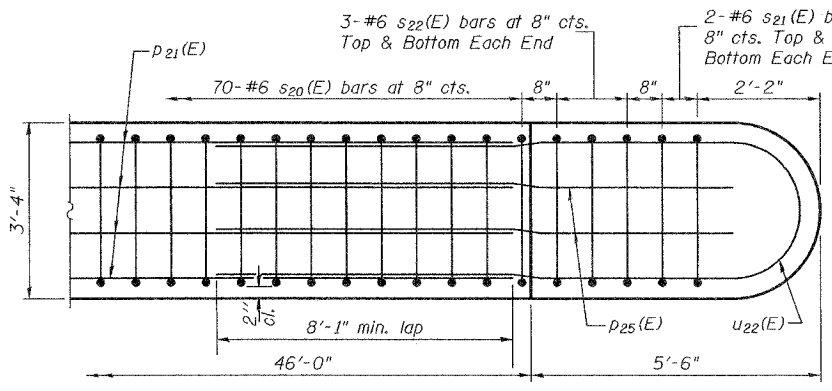


FOOTING REINFORCEMENT PLAN

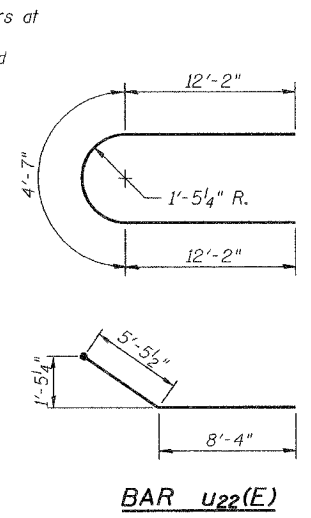


FOOTING PILE PLAN

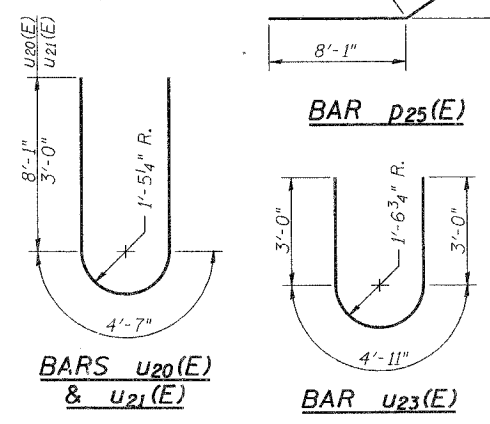
PILE DATA
 Type & Size: HP 12x53 w/ Pile Shoes
 Nominal Required Bearing : 420 Kips
 Allowable Resistance Available : 140 Kips
 Est. Length: 18'
 No. Req'd: 19 + 1 Test Pile



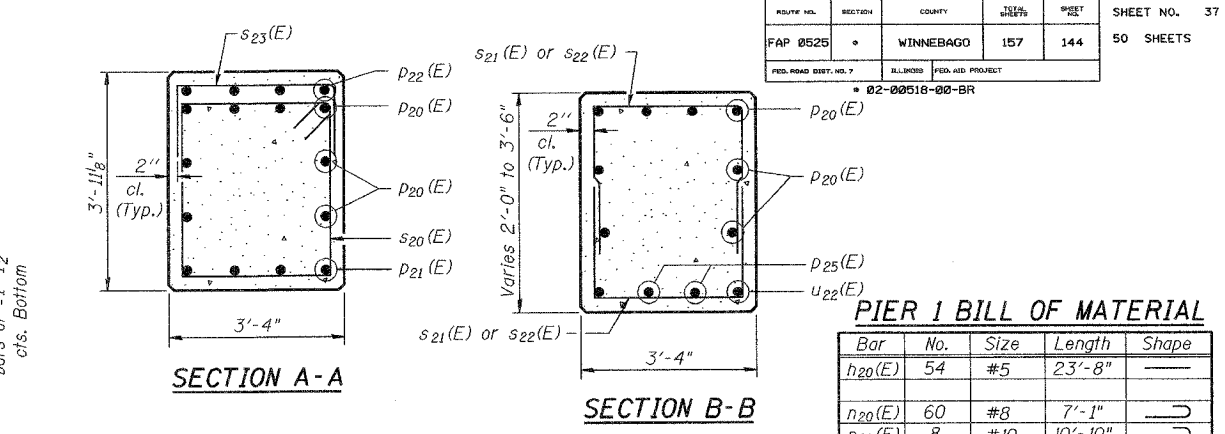
**DETAIL A
REFLECTED UNDERSIDE PLAN OF PIER CAP END**



BAR n21(E) BAR n20(E)

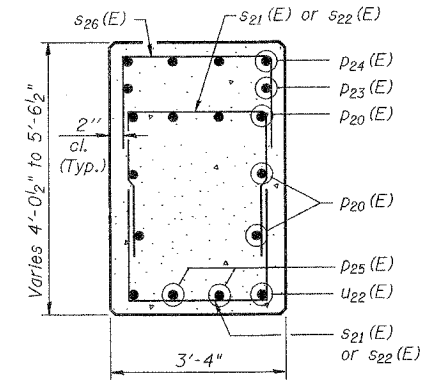


**BARS u20(E) & u21(E)
BAR u23(E)**

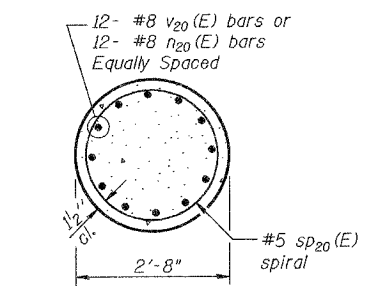


SECTION A-A

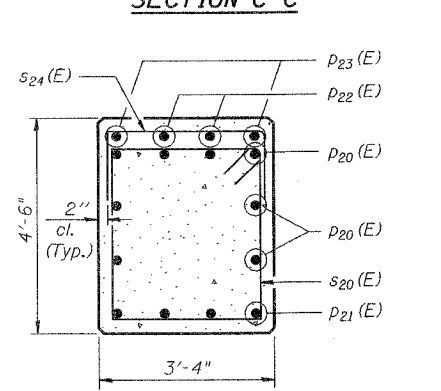
SECTION B-B



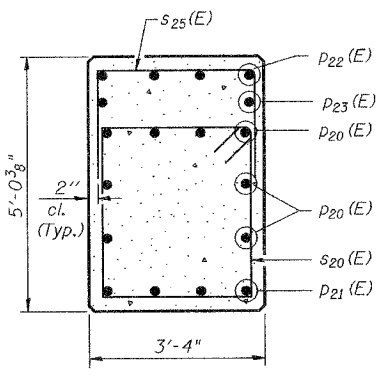
SECTION C-C



SECTION D-D



SECTION E-E



SECTION F-F

A & B DIMENSIONS

Bar	A	B
s21 (E)	3'-0"	2'-3"
s22 (E)	3'-0"	2'-6"
s23 (E)	3'-0"	2'-2"
s24 (E)	3'-0"	2'-8"
s25 (E)	3'-0"	3'-3"
s26 (E)	3'-0"	3'-9"
s27 (E)	3'-4"	17'-2"
s28 (E)	3'-4"	10'-2"

MINIMUM BAR LAP

HORIZONTAL
 #5 - 2'-2" (Bottom of Footing)
 #5 - 3'-0"
 #9 - 8'-1"

PIER 1 BILL OF MATERIAL

Bar	No.	Size	Length	Shape
h20(E)	54	#5	23'-8"	—
n20(E)	60	#8	7'-1"	—
n21(E)	8	#10	10'-10"	—
p20(E)	16	#9	30'-11"	—
p21(E)	8	#9	27'-1"	—
p22(E)	10	#5	14'-3"	—
p23(E)	2	#5	32'-5"	—
p24(E)	4	#5	9'-11"	—
p25(E)	4	#9	12'-0"	—
s20(E)	70	#6	13'-8"	□
s21(E)	8	#6	7'-6"	U
s22(E)	12	#6	8'-0"	U
s23(E)	12	#5	7'-4"	U
s24(E)	11	#5	8'-4"	U
s25(E)	11	#5	9'-6"	U
s26(E)	10	#5	10'-6"	U
s27(E)	45	#10	37'-8"	U
s28(E)	45	#10	23'-8"	U
sp20(E)	5	#5	7'-8"	〰〰
t20(E)	49	#9	9'-8"	—
u20(E)	4	#9	20'-9"	U
u21(E)	2	#5	10'-7"	U
u22(E)	2	#9	28'-11"	U
u23(E)	26	#5	10'-11"	U
v20(E)	60	#8	9'-6"	—
v21(E)	8	#10	17'-2"	—
w20(E)	20	#5	26'-5"	—
Concrete Structures	Cu. Yd.	207.1		
Reinforcement Bars, Epoxy Coated	Pound	25,840		
Structure Excavation	Cu. Yd.	474.3		
Furnishing Steel Piles, HP 12x53	Foot	342		
Driving Piles	Foot	342		
Pile Shoes	Each	20		
Test Pile Steel, HP 12x53	Each	1		
Anchor Bolts, 1/4"	Each	10		

NOTES

Work this sheet with Sheet 36 of 50.
 Reinforcement Bars designated (E) shall be epoxy coated.
 Bar indicated thus 1x2 - #5 etc. indicates 1 line of bar with 2 lengths per line.
 * Length is spiral height.

Corporate License Number 184-001-084

PIER 1 DETAILS

**WESTBOUND HARRISON AVENUE
 OVER UP & CC&P RAILROAD
 F.A.P. ROUTE 0525
 SECTION 02-00518-00-BR
 ROCKFORD, ILLINOIS
 STATION 95+25.35
 STRUCTURE NO. 101-6109**

Copyright Hanson Professional Services Inc. 2006



JOB NO. 03R1751
 DATE 12/14/06

12/6/06 PM 12:26:06 12/16 PM 12:26:06 06/17/06 12/16/06 03/17/06
 DRAWN: MGR/ARJ
 CHECKED: MGR/ARJ
 DATE: 06/02/06