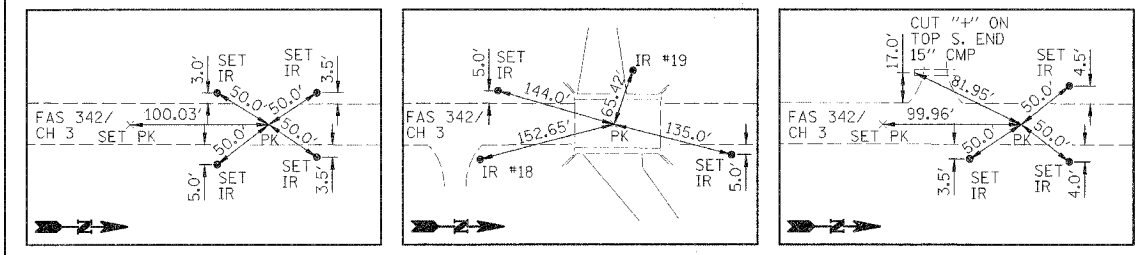
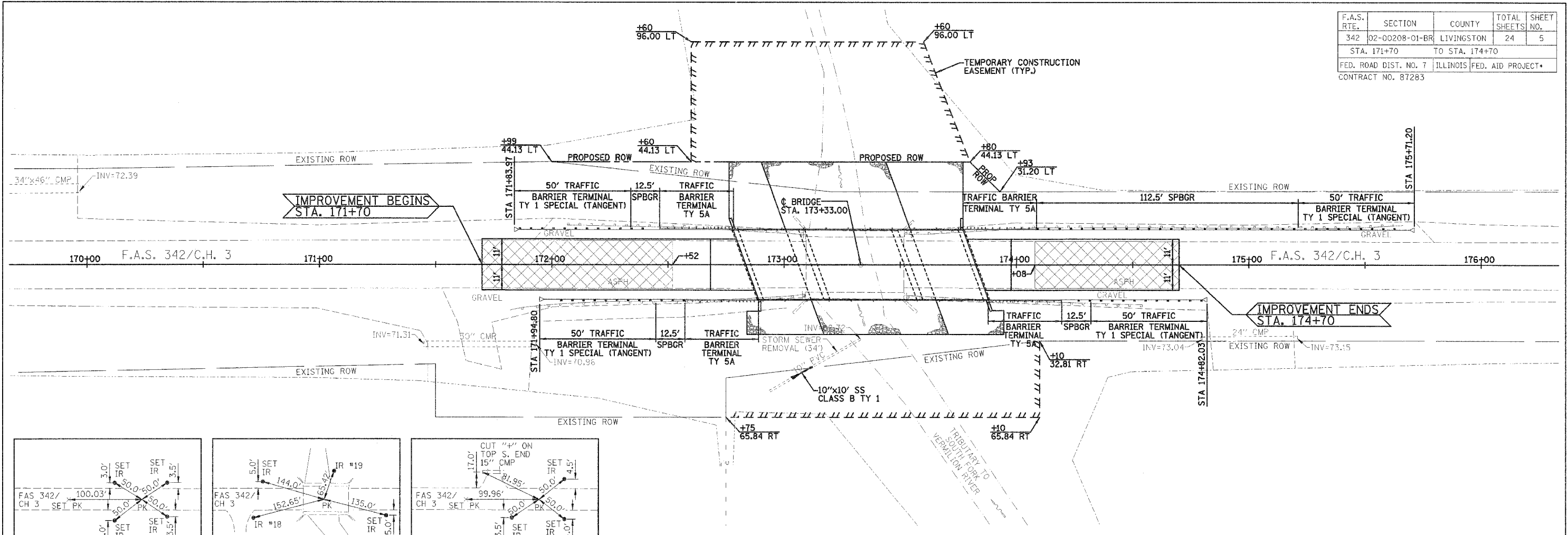
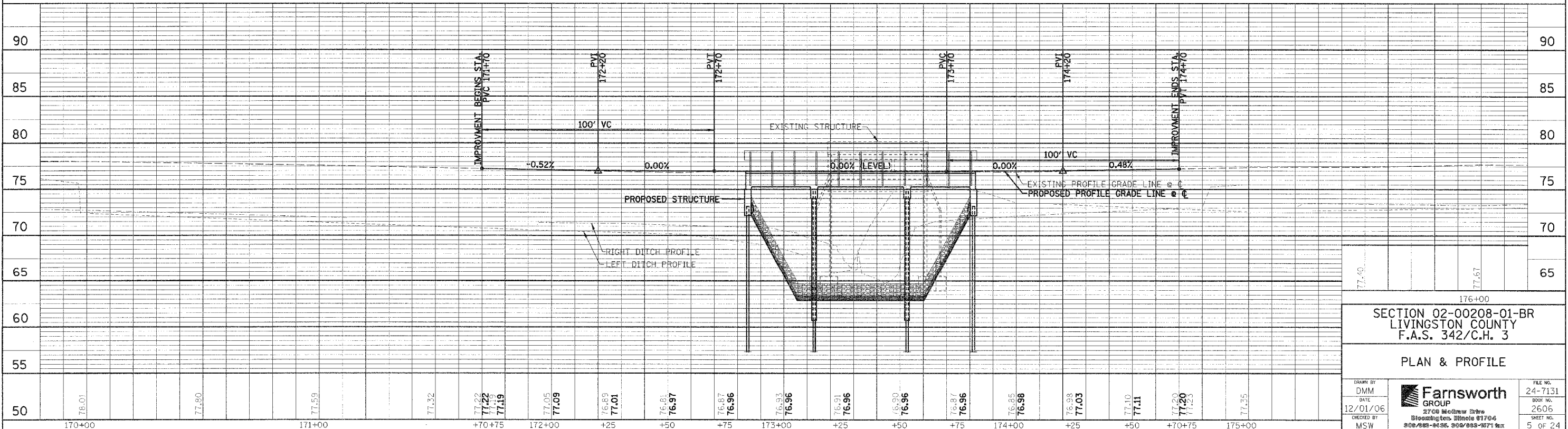


F.A.S. RTE.	SECTION	COUNTY	TOTAL SHEETS	SHEET NO.
342	02-00208-01-BR	LIVINGSTON	24	5
STA. 171+70		TO STA. 174+70		
FED. ROAD DIST. NO. 7		ILLINOIS FED. AID PROJECT*		
CONTRACT NO. 87283				



BENCHMARKS:
 1.) EXISTING "□", ON THE N.E. CORNER OF EAST BRIDGE RAIL ELEVATION = 81.12
 2.) IRON ROD, CP #14 ±1200' S. OF BRIDGE ON E. SIDE OF ROAD
 N 8807.79, E 10018.98 ELEVATION = 77.55
 3.) IRON ROD, CP #17 S.E. QUADRANT TOB STA. 173+23/46' RT
 N 9992.61, E 10046.26 ELEVATION = 73.76

HOT-MIX ASPHALT SURFACE REMOVAL, 1 1/2"



SECTION 02-00208-01-BR
 LIVINGSTON COUNTY
 F.A.S. 342/C.H. 3
 PLAN & PROFILE

DRAWN BY DMM	DATE 12/01/06	CHECKED BY MSW	FILE NO. 24-7131	BOOK NO. 2606	SHEET NO. 5 OF 24
-----------------	------------------	-------------------	---------------------	------------------	----------------------

