

ROUTE NO.	SECTION	COUNTY	TOTAL SHEETS	SHEET NO.
C.H. 4 FAS 321	04-00034 -04-BR	IROQUOIS	16	1
		ILLINOIS	PROJ. BRS-321(113)	

CONTRACT NO. 87299

STATE OF ILLINOIS  
DEPARTMENT OF TRANSPORTATION  
DIVISION OF HIGHWAYS  
**PLANS FOR PROPOSED  
HIGHWAY BRIDGE PROGRAM**

SECTION 04-00034-04-BR  
IROQUOIS COUNTY  
PROJECT NO. BRS-321(113)  
COUNTY HIGHWAY 4 (FAS RTE 321)  
JOB NO. C-93-027-05

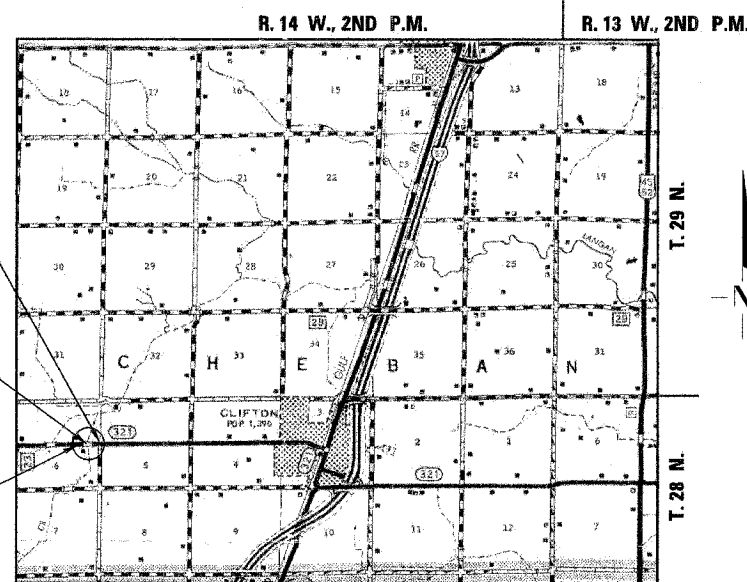
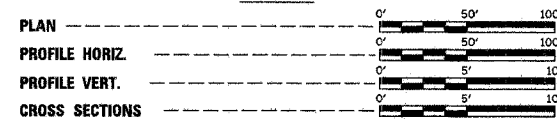
**INDEX OF SHEETS**

SHEET NO.	TITLE
1.	COVER SHEET
2.	SUMMARY OF QUANTITIES, GENERAL NOTES & TYPICAL SECTIONS
3.	ROADWAY PAVEMENT NOTES
4.	PLAN AND PROFILE SHEET
5.	SHOULDER & GUARDRAIL DETAILS
6.-9.	BRIDGE PLANS
10.-11.	FOUNDATION BORING LOGS
12.-16.	STATION CROSS SECTIONS

**STANDARDS:**

- 280001-03
- 515001-02
- 630001-07
- 630301-04
- 631032-03
- 635006-02
- 702001-06
- BLR 21-6

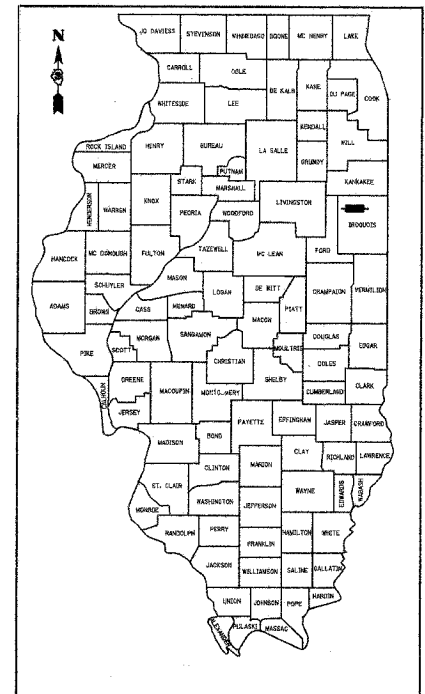
**SCALES**



**LOCATION PLAN**

GROSS LENGTH OF SECTION = 550.00 FEET = 0.104 MILES  
 NET LENGTH OF SECTION = 550.00 FEET = 0.104 MILES

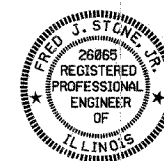
SCALE IN MILES



LOCATION OF SECTION INDICATED THUS:

CLASSIFICATION: MAJOR COLLECTOR (RURAL)  
 DESIGN VOLUME: ADT 400-750  
 CURRENT ADT: 525 (2005)  
 DESIGN SPEED: 50 MPH

TOLL FREE JOINT UTILITY LOCATING  
 INFORMATION FOR EXCAVATORS (J.U.L.I.E.)  
 TELEPHONE NUMBER 1-800-892-0123



*Fred J. Stancak (11.11.07)*  
 ILLINOIS PROFESSIONAL NO. 26865  
 EXPIRES 11-30-07

APPROVED	<i>December 18, 2006</i>	2006
	<i>[Signature]</i>	COUNTY ENGINEER
PASSED	<i>DEC. 21</i>	2006
	<i>[Signature]</i>	DISTRICT THREE ENGINEER OF LOCAL ROADS & STREETS
RELEASING FOR BID BASED ON LIMITED REVIEW	<i>DEC. 21</i>	2006
	<i>[Signature]</i>	DEPUTY DIRECTOR OF HIGHWAYS, REGION TWO ENGINEER
STATE OF ILLINOIS DEPARTMENT OF TRANSPORTATION		

4440 ASH GROVE  
 SPRINGFIELD, IL 62711  
 (217) 793-8800  
 www.fehr-graham.com

**FEHR-GRAHAM & ASSOCIATES, LLC**  
 ENGINEERING AND SCIENCE CONSULTANTS  
PROFESSIONAL ENGINEERS IN ILLINOIS, MISSOURI, INDIANA, AND OHIO