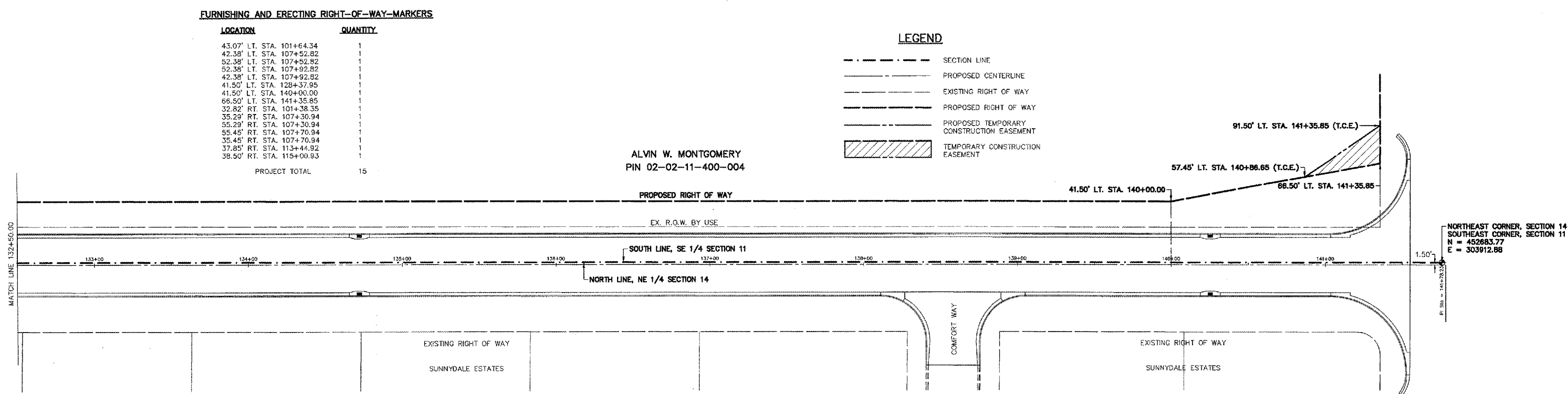
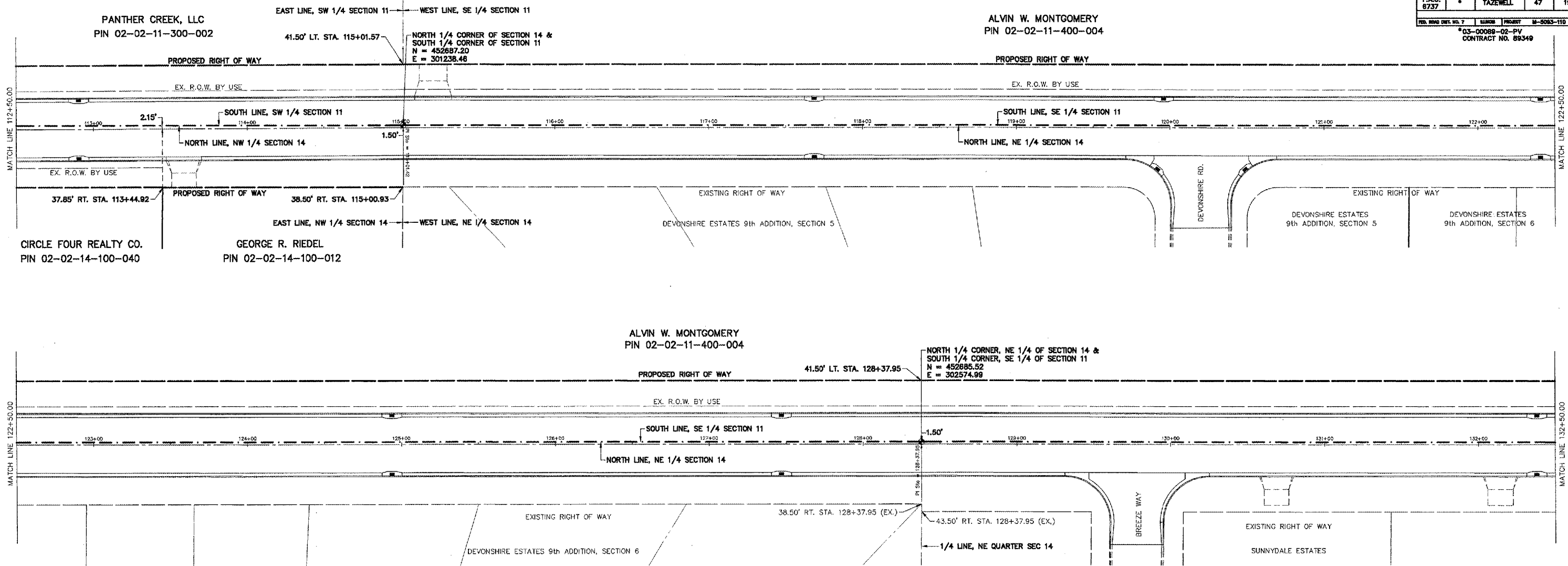


ROUTE NO.	DISTRICT	COUNTY	TOTAL SHEETS	SHEET NO.
F.A.U. 8737	*	TAZEVELL	47	19
PROJECT NO. 03-00089-02-PV CONTRACT NO. 89349 ILL. HIGHWAY DIST. NO. 7				



FURNISHING AND ERECTING RIGHT-OF-WAY-MARKERS

LOCATION	QUANTITY
43.07' LT. STA. 101+64.34	1
42.38' LT. STA. 107+52.82	1
52.38' LT. STA. 107+52.82	1
52.38' LT. STA. 107+92.82	1
42.38' LT. STA. 107+92.82	1
41.50' LT. STA. 128+37.95	1
41.50' LT. STA. 140+00.00	1
66.50' LT. STA. 141+35.85	1
32.82' RT. STA. 101+38.35	1
35.29' RT. STA. 107+30.94	1
55.29' RT. STA. 107+30.94	1
55.45' RT. STA. 107+70.94	1
35.45' RT. STA. 107+70.94	1
37.85' RT. STA. 113+44.92	1
38.50' RT. STA. 115+00.93	1
PROJECT TOTAL	15

LEGEND

- SECTION LINE
- PROPOSED CENTERLINE
- EXISTING RIGHT OF WAY
- PROPOSED RIGHT OF WAY
- PROPOSED TEMPORARY CONSTRUCTION EASEMENT
- TEMPORARY CONSTRUCTION EASEMENT