

F.A.I. RTE.	SECTION	COUNTY	TOTAL SHEETS	SHEET NO.
7902	***	CHRISTIAN	67	22
STA. 34+00.00 TO STA. 49+00.00		ILLINOIS FED. AID PROJECT		
FED. ROAD DIST. NO.		03-00055-00-FP		

DESIGN	DATE	REASON

PLAN	DATE	BY

PLOTS & CHECKS	DATE	REASON

CHECKS	DATE	REASON

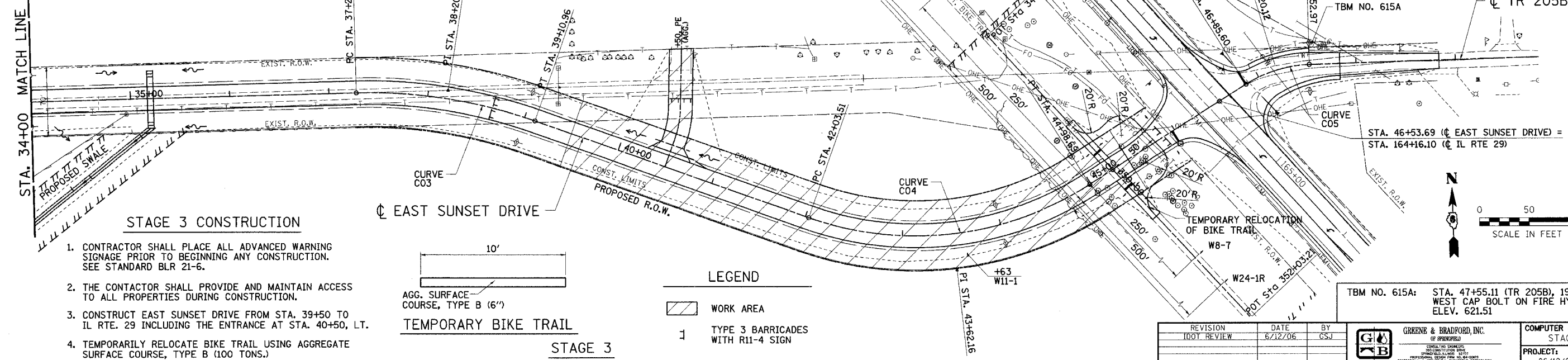
INT.	DATE	REASON

INT.	DATE	REASON

**CURVE C03**  
 P.I. STA. 38+20.35  
 $\Delta = 21^\circ 00' 16''$  (RT)  
 $D = 11^\circ 27' 33''$   
 $R = 500.00'$   
 $T = 92.69'$   
 $L = 183.30'$   
 $E = 8.52'$   
 P.C. STA. 37+27.66  
 P.T. STA. 39+10.96  
 S.E. ATTAINED: STA. 36+24.00 TO STA. 37+60.00  
 S.E. REMOVED: STA. 38+78.00 TO STA. 40+14.00  
 S.E. RATE = 3.90%

**CURVE C04**  
 P.I. STA. 43+62.16  
 $\Delta = 52^\circ 02' 20''$  (LT)  
 $D = 17^\circ 37' 46''$   
 $R = 325.00'$   
 $T = 158.65'$   
 $L = 295.18'$   
 $E = 36.66'$   
 P.C. STA. 42+03.51  
 P.T. STA. 44+98.69  
 S.E. ATTAINED: STA. 41+01.00 TO STA. 42+37.00  
 S.E. REMOVED: STA. 44+09.00 TO STA. 45+45.00  
 S.E. RATE = 4.00%

**CURVE C05**  
 P.I. STA. 47+20.12  
 $\Delta = 30^\circ 53' 00''$  (RT)  
 $D = 45^\circ 50' 12''$   
 $R = 125.00'$   
 $T = 34.53'$   
 $L = 67.38'$   
 $E = 4.68'$   
 P.C. STA. 46+85.60  
 P.T. STA. 47+52.97



- STAGE 3 CONSTRUCTION**
- CONTRACTOR SHALL PLACE ALL ADVANCED WARNING SIGNAGE PRIOR TO BEGINNING ANY CONSTRUCTION. SEE STANDARD BLR 21-6.
  - THE CONTACTOR SHALL PROVIDE AND MAINTAIN ACCESS TO ALL PROPERTIES DURING CONSTRUCTION.
  - CONSTRUCT EAST SUNSET DRIVE FROM STA. 39+50 TO IL RTE. 29 INCLUDING THE ENTRANCE AT STA. 40+50, LT.
  - TEMPORARILY RELOCATE BIKE TRAIL USING AGGREGATE SURFACE COURSE, TYPE B (100 TONS.) FIELD ENGINEER SHALL FIELD SET TEMPORARY LOCATION.

10'  
 AGG. SURFACE COURSE, TYPE B (6'')  
**TEMPORARY BIKE TRAIL**

**LEGEND**  
 WORK AREA  
 TYPE 3 BARRICADES WITH R11-4 SIGN

TBM NO. 615A: STA. 47+55.11 (TR 205B), 19' LT. WEST CAP BOLT ON FIRE HYDRANT ELEV. 621.51

REVISION	DATE	BY
1001 REVIEW	6/12/06	GSJ



COMPUTER FILE NO. STAGE4TBT  
 PROJECT: 02159  
 06/12/06-GSJ

