

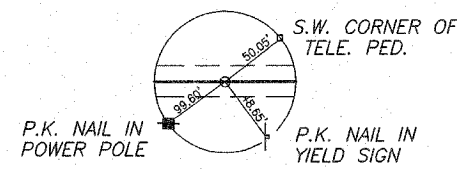
JAMES E. &
EVELYN B. GILBERT

MICHAEL S. &
KATHY S. OAKLEY

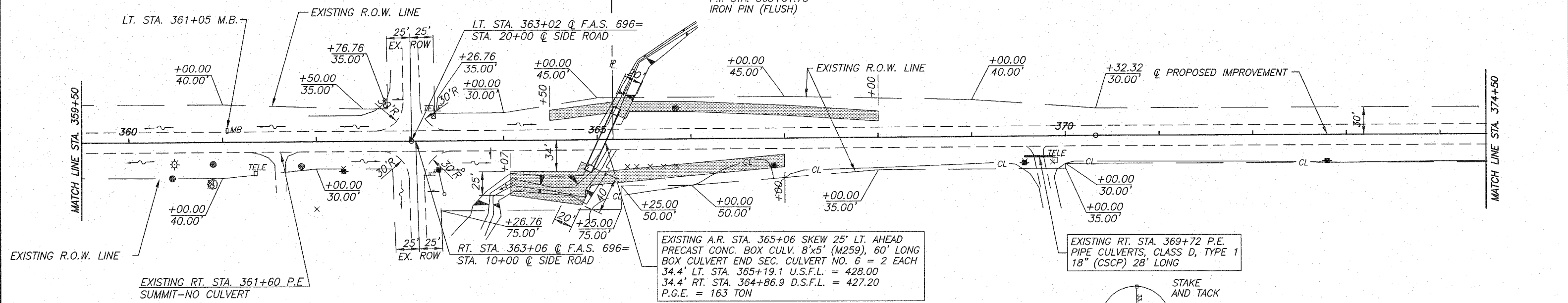
N.W. 1/4, N.W. 1/4, SEC. 11, T.9N., R.13W., 2ND PM.
HUISINGA GRAIN, INC.

ROUTE NO.	SECTION	COUNTY	TOTAL SHEETS	SHEET NO.
F.A.S. 896	08-00262-00-RS	CLARK	27	15
FED. ROAD DIST. NO. 7	ILLINOIS	PROJECT	RS-896(106)	

CONTRACT NO. 95487



PI STA=370+32.32
Δ = 0°12'31" R
NO CURVE



EXISTING RT. STA. 361+60 P.E. SUMMIT-NO CULVERT
RALPH & MABLE GILBERT

SCALES:
1" = 50' HOR.
1" = 5' VER.

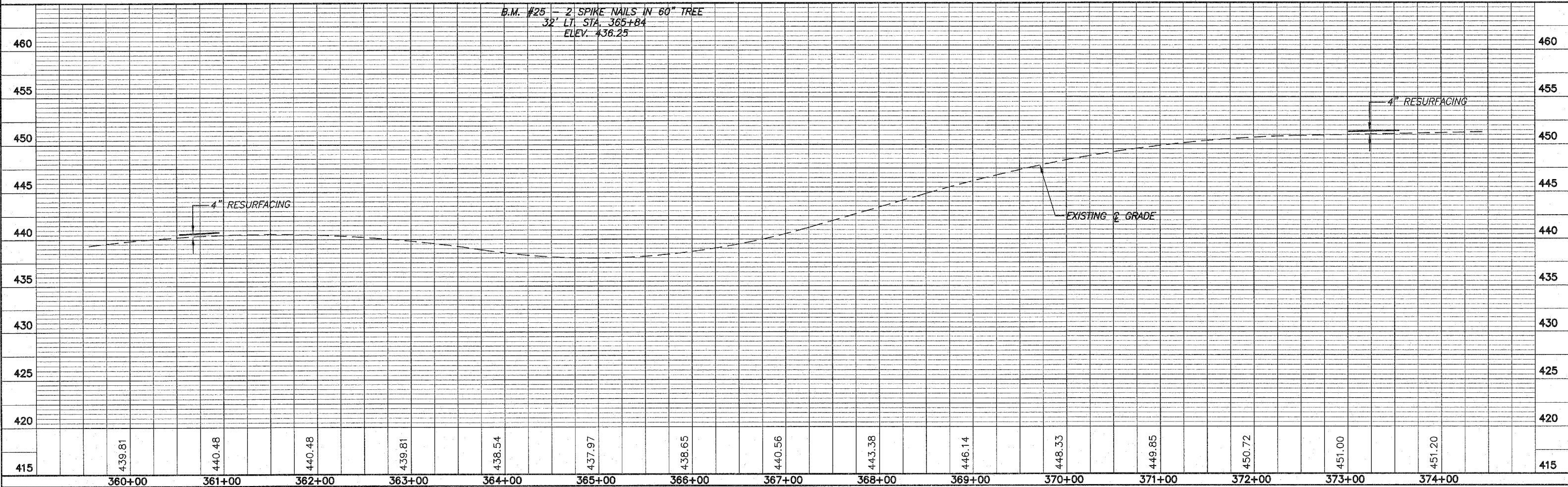
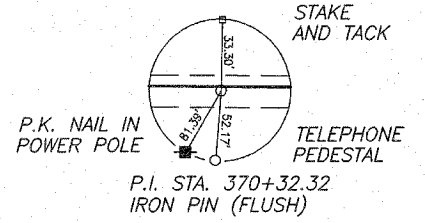
PI STA=363+01.75
Δ = 0°06'25" L
NO CURVE

EXISTING A.R. STA. 365+06 SKEW 25' LT. AHEAD
PRECAST CONC. BOX CULV. 8'x5' (M259), 60' LONG
BOX CULVERT END SEC. CULVERT NO. 6 = 2 EACH
34.4' LT. STA. 365+19.1 U.S.F.L. = 428.00
34.4' RT. STA. 364+86.9 D.S.F.L. = 427.20
P.G.E. = 163 TON

EXISTING RT. STA. 369+72 P.E. PIPE CULVERTS, CLASS D, TYPE 1 18" (CSCP) 28' LONG

INDICATES STONE RIPRAP DITCH (EXISTING)

DAVID S. & TERESA S. GOODWIN
N.E. 1/4, N.E. 1/4, SEC. 10, T.9N., R.13W., 2ND PM.



B.M. #25 - 2 SPIKE NAILS IN 60" TREE
32' LT. STA. 365+84
ELEV. 436.25