

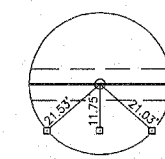
N.W. 1/4, N.W. 1/4, SEC. 14, T.9N., R.13W., 2ND PM.
HUISINGA GRAIN, INC

ROUTE NO.	SECTION	COUNTY	TOTAL SHEETS	SHEET NO.
F.A.S. 896	08-00262-00-RS	CLARK	27	19
FED. ROAD DIST. NO. 7		ILLINOIS	PROJECT	RS-898(106)

CONTRACT NO. 95487



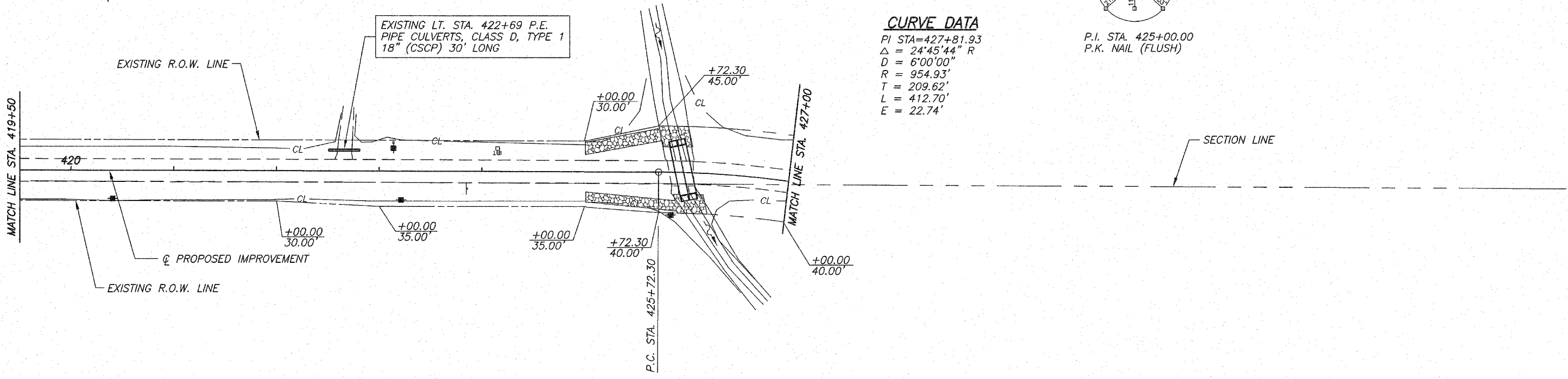
ALL TIES
IRON PINS



P.I. STA. 425+00.00
P.K. NAIL (FLUSH)

CURVE DATA

PI STA=427+81.93
 $\Delta = 24^{\circ}45'44''$ R
 D = 6'00'00"
 R = 954.93'
 T = 209.62'
 L = 412.70'
 E = 22.74'



INDICATES STONE
 RIPRAP DITCH (EXISTING)

LINDA D. HOLLINGSWORTH

N.E. 1/4, N.E. 1/4, SEC. 15, T.9N., R.13W., 2ND PM.

