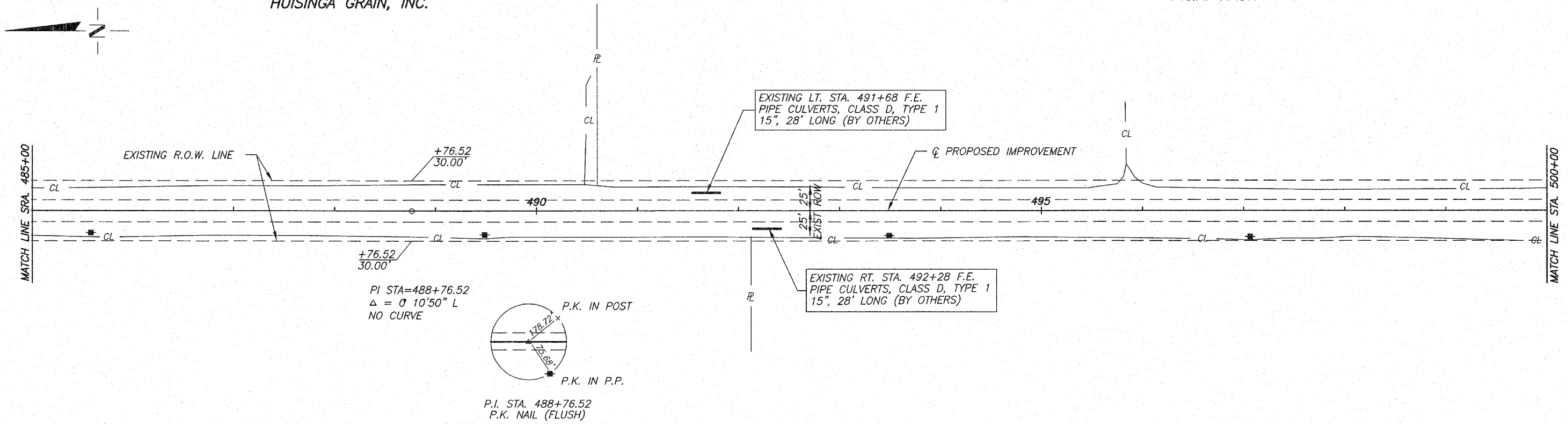


ROUTE NO.	SECTION	COUNTY	TOTAL SHEETS	SHEET NO.
F.A.S. 696	06-00262 -00-RS	CLARK	27	24
FED. ROAD DIST. NO. 7	ILLINOIS	PROJECT	RS-696(106)	
CONTRACT NO. 95487				

S.E. 1/4, N.E. 1/4, SEC. 22, T.9N., R.13W., 2ND PM.
HUISINGA GRAIN, INC.

S.E. 1/4, N.E. 1/4, SEC. 22, T.9N., R.13W., 2ND PM.
P.&A. NASH



RALPH & DOREEN WASHBURN
S.E. 1/4, N.E. 1/4, SEC. 22, T.9N., R.13W., 2ND PM.

J. BROOKS & N. ALEXANDER
S.E. 1/4, N.E. 1/4, SEC. 22, T.9N., R.13W., 2ND PM.

