

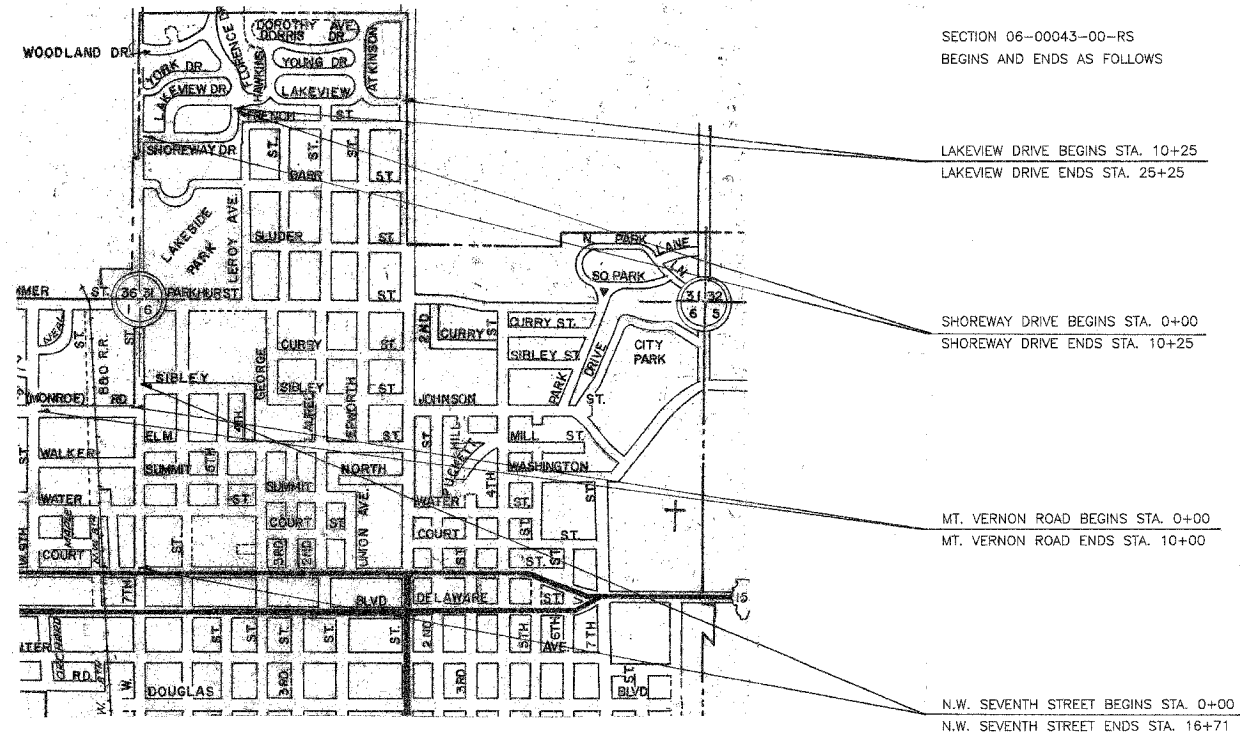
**INDEX OF SHEETS**

- 1 COVER SHEET
- 2 SUMMARY OF QUANTITIES
- 3 TYPICAL SECTIONS

STANDARDS:

442201-02	PATCHES
701306-01	TRAFFIC CONTROL
702001-05	TRAFFIC CONTROL DEVICES
780001-01	PAVEMENT MARKINGS
BLR 21-6	TRAFFIC CONTROL
BLR 22-4	TRAFFIC CONTROL

STATE OF ILLINOIS  
DEPARTMENT OF TRANSPORTATION  
DIVISION OF HIGHWAYS  
PLANS FOR PROPOSED  
SURFACE TRANSPORTATION URBAN PROJECT  
CITY OF FAIRFIELD  
WAYNE COUNTY  
SECTION 06-00043-00-RS  
N.W. SEVENTH STREET, MT. VERNON ROAD  
SHOREWAY DRIVE AND LAKEVIEW DRIVE  
PROJECT M-5022(8)  
JOB NO. C-97-028-07



**LOCATION MAP**

APPROXIMATE SCALE: 1 INCH = 800 FEET

- NET LENGTH = 1671 FEET = 0.316 MILES (N.W. SEVENTH ST.)
- NET LENGTH = 1500 FEET = 0.284 MILES (LAKEVIEW DR.)
- NET LENGTH = 1025 FEET = 0.194 MILES (SHOREWAY DR.)
- NET LENGTH = 1000 FEET = 0.190 MILES (MT. VERNON ROAD)



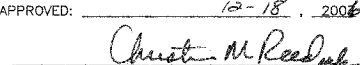
TOTAL LENGTH = 5196 FEET = 0.984 MILES

- FUNCTIONAL CLASS - N.W. SEVENTH ST. : URBAN COLLECTOR (FAU 8691) ADT = 3500
- FUNCTIONAL CLASS - LAKEVIEW DRIVE : URBAN COLLECTOR (FAU 8681) ADT = 700
- FUNCTIONAL CLASS - SHOREWAY DRIVE : URBAN COLLECTOR (FAU 8681) ADT = 550
- FUNCTIONAL CLASS - MT. VERNON ROAD : URBAN COLLECTOR (FAU 8682) ADT = 1450

TOLL FREE JOINT UTILITY LOCATING  
INFORMATION FOR EXCAVATORS (J.U.L.I.E.)  
TELEPHONE NO. 1-800-892-0123

CONNOR & CONNOR, INC.  
PROFESSIONAL DESIGN FIRM #184-000832

*Michael Ross*  
ILLINOIS REGISTERED PROFESSIONAL ENGINEER # 31350  
LICENSE EXPIRES 03/30, 2007

APPROVED: <u>12-5-2006</u>  LOCAL AGENCY REPRESENTATIVE, MAYOR
PASSED: <u>12-18-2006</u>  DISTRICT SEVEN ENGINEER OF LOCAL ROADS & STREETS
APPROVED: <u>12-18-2006</u>  DEPUTY DIRECTOR OF HIGHWAYS REGION FOUR ENGINEER STATE OF ILLINOIS DEPARTMENT OF TRANSPORTATION