

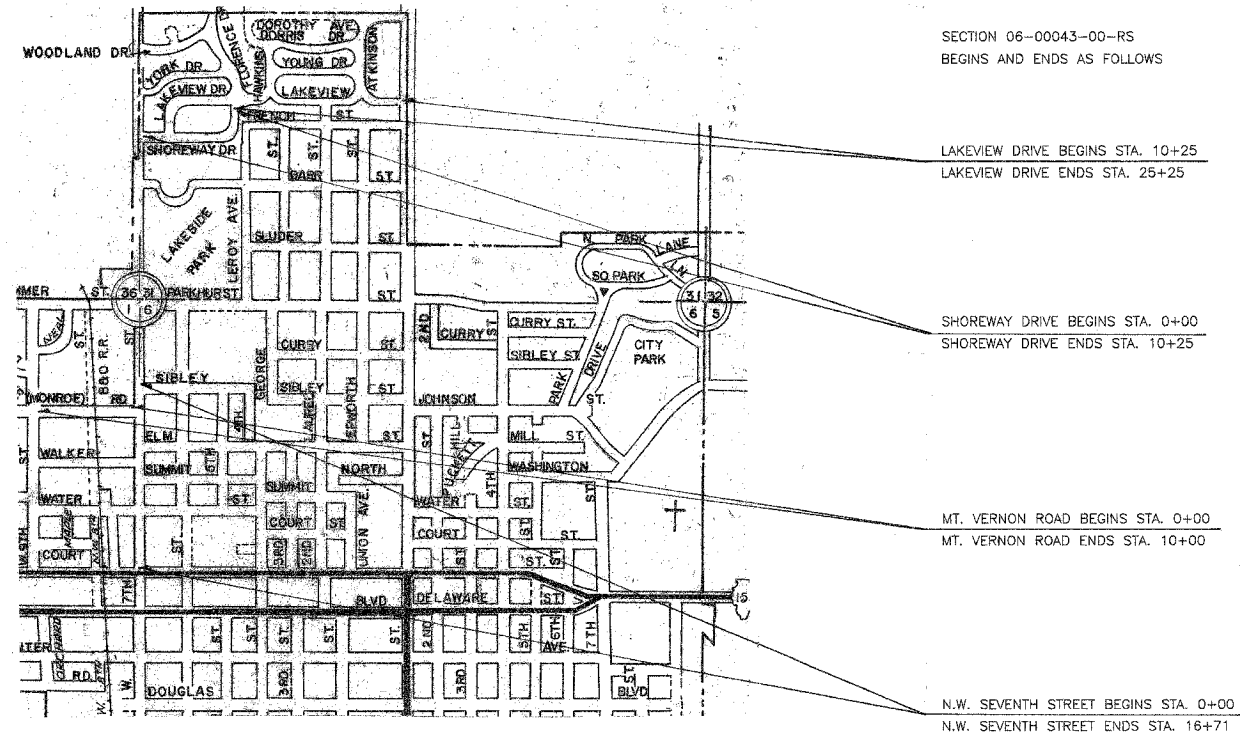
**INDEX OF SHEETS**

- 1 COVER SHEET
- 2 SUMMARY OF QUANTITIES
- 3 TYPICAL SECTIONS

STANDARDS:

442201-02	PATCHES
701306-01	TRAFFIC CONTROL
702001-05	TRAFFIC CONTROL DEVICES
780001-01	PAVEMENT MARKINGS
BLR 21-6	TRAFFIC CONTROL
BLR 22-4	TRAFFIC CONTROL

STATE OF ILLINOIS  
DEPARTMENT OF TRANSPORTATION  
DIVISION OF HIGHWAYS  
PLANS FOR PROPOSED  
SURFACE TRANSPORTATION URBAN PROJECT  
CITY OF FAIRFIELD  
WAYNE COUNTY  
SECTION 06-00043-00-RS  
N.W. SEVENTH STREET, MT. VERNON ROAD  
SHOREWAY DRIVE AND LAKEVIEW DRIVE  
PROJECT M-5022(8)  
JOB NO. C-97-028-07



CONTRACT NO. 95496

FUNCTIONAL CLASS - N.W. SEVENTH ST. :	URBAN COLLECTOR (FAU 8691)	ADT = 3500
FUNCTIONAL CLASS - LAKEVIEW DRIVE :	URBAN COLLECTOR (FAU 8681)	ADT = 700
FUNCTIONAL CLASS - SHOREWAY DRIVE :	URBAN COLLECTOR (FAU 8681)	ADT = 550
FUNCTIONAL CLASS - MT. VERNON ROAD :	URBAN COLLECTOR (FAU 8682)	ADT = 1450

**LOCATION MAP**

APPROXIMATE SCALE: 1 INCH = 800 FEET

NET LENGTH = 1671 FEET = 0.316 MILES (N.W. SEVENTH ST.)
NET LENGTH = 1500 FEET = 0.284 MILES (LAKEVIEW DR.)
NET LENGTH = 1025 FEET = 0.194 MILES (SHOREWAY DR.)
NET LENGTH = 1000 FEET = 0.190 MILES (MT. VERNON ROAD)

TOTAL LENGTH = 5196 FEET = 0.984 MILES

TOLL FREE JOINT UTILITY LOCATING  
INFORMATION FOR EXCAVATORS (J.U.L.I.E.)  
TELEPHONE NO. 1-800-892-0123

CONNOR & CONNOR, INC.  
PROFESSIONAL DESIGN FIRM #184-000832

*Michael Ross*  
ILLINOIS REGISTERED PROFESSIONAL ENGINEER # 31350  
LICENSE EXPIRES 30, 2007

APPROVED: 12-5-2006  
*Wayne M. Bost*  
LOCAL AGENCY REPRESENTATIVE, MAYOR

PASSED: 12-18, 2006  
*Maureen Kost*  
DISTRICT SEVEN ENGINEER  
OF LOCAL ROADS & STREETS

APPROVED: 12-18, 2006  
*Christina M. Reed*  
DEPUTY DIRECTOR OF HIGHWAYS  
REGION FOUR ENGINEER  
STATE OF ILLINOIS  
DEPARTMENT OF TRANSPORTATION

CITY	FAIRFIELD	TOTAL SHEETS	SHEET NO.
SECTION	06-00043-00-RS	3	2
STA.	TO STA.		

SUMMARY OF QUANTITIES (TOTAL)			
QNTY	UNIT	ITEM	1000 CODE
1,863	GALLON	BITUMINOUS MATERIALS (PRIME COAT)	40600100
38	TON	AGGREGATE (PRIME COAT)	40600300
149	TON	LEVELING BINDER (MACHINE METHOD), N50	40600625
1,973	TON	HOT-MIX ASPHALT SURFACE COURSE, MIX "C", N50	40603310
17,413	SQ YD	HOT-MIX ASPHALT SURFACE REMOVAL 1½"	44000155
30	SQ YD	CLASS D PATCHES, TYPE I, 11 INCH	44201773
30	SQ YD	CLASS D PATCHES, TYPE II, 11 INCH	44201777
30	SQ YD	CLASS D PATCHES, TYPE III, 11 INCH	44201781
6	EACH	MANHOLES TO BE ADJUSTED	60255500
1	L SUM	MOBILIZATION	67100100
1	L SUM	TRAFFIC CONTROL AND PROTECTION, STANDARD 701306	70100460
26	SQ FT	THERMOPLASTIC PAVEMENT MARKING - LETTERS AND SYMBOLS	78000100 *
1000	FOOT	THERMOPLASTIC PAVEMENT MARKING - LINE 4"	78000200 *
84	FOOT	THERMOPLASTIC PAVEMENT MARKING - LINE 6"	78000400 *
63	FOOT	THERMOPLASTIC PAVEMENT MARKING - LINE 12"	78000600 *
15	FOOT	THERMOPLASTIC PAVEMENT MARKING - LINE 24"	78000650 *

\* SPECIALTY ITEMS

SUMMARY OF QUANTITIES (N.W. 7TH ST.)			
QNTY	UNIT	ITEM	CODE
705	GALLON	BITUMINOUS MATERIALS (PRIME COAT)	40600100
14	TON	AGGREGATE (PRIME COAT)	40600300
974	TON	HOT-MIX ASPHALT SURFACE COURSE, MIX "C", N50	40603310
7,055	SQ YD	HOT-MIX ASPHALT SURFACE REMOVAL 1½"	44000006
30	SQ YD	CLASS D PATCHES, TYPE I, 11 INCH	44201773
30	SQ YD	CLASS D PATCHES, TYPE II, 11 INCH	44201777
30	SQ YD	CLASS D PATCHES, TYPE III, 11 INCH	44201781
5	EACH	MANHOLES TO BE ADJUSTED	60255500
26	SQ FT	THERMOPLASTIC PAVEMENT MARKING - LETTERS AND SYMBOLS	78000100
1000	FOOT	THERMOPLASTIC PAVEMENT MARKING - LINE 4"	78000200
84	FOOT	THERMOPLASTIC PAVEMENT MARKING - LINE 6"	78000400
63	FOOT	THERMOPLASTIC PAVEMENT MARKING - LINE 12"	78000600
15	FOOT	THERMOPLASTIC PAVEMENT MARKING - LINE 24"	78000650

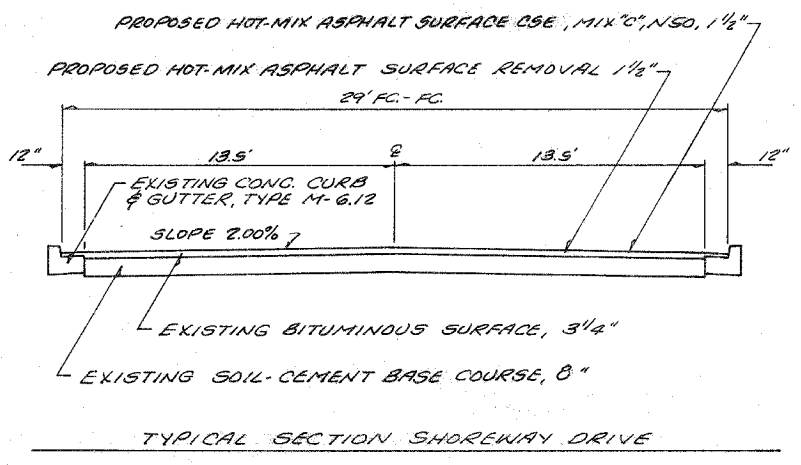
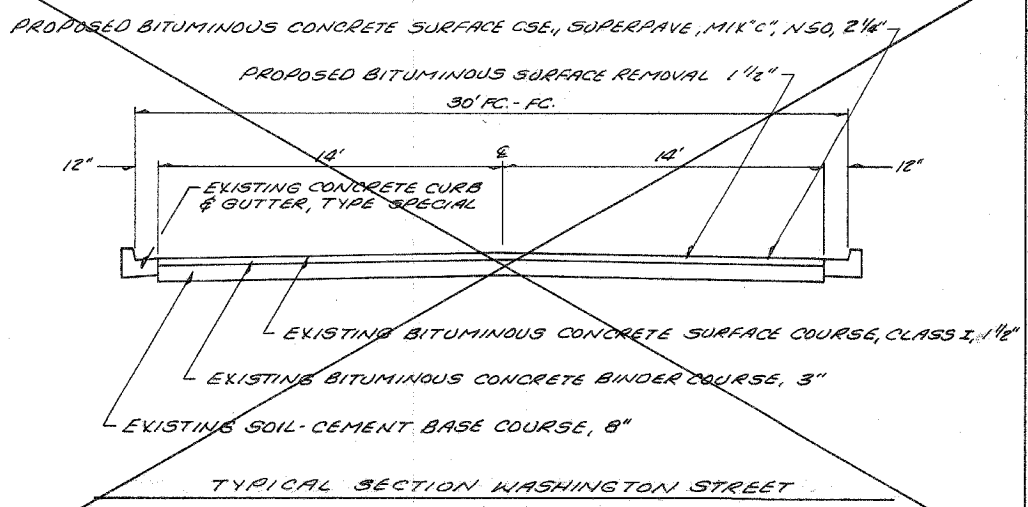
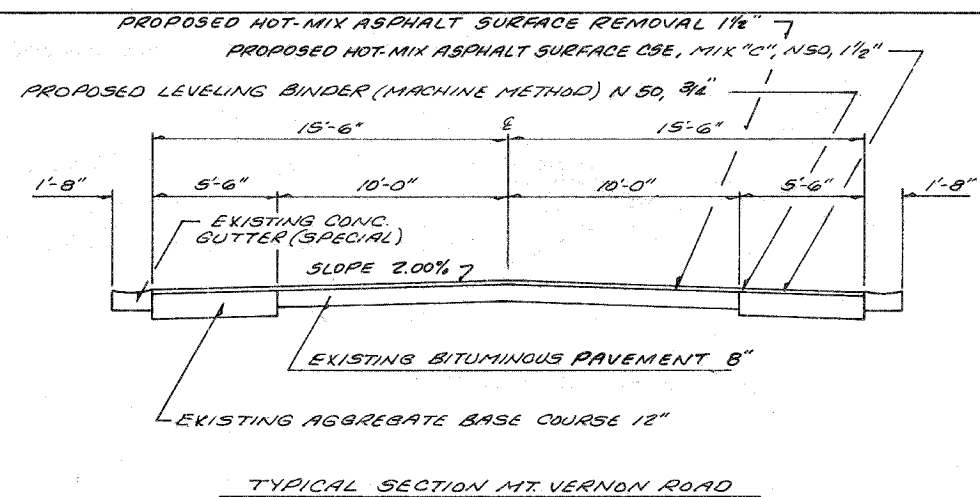
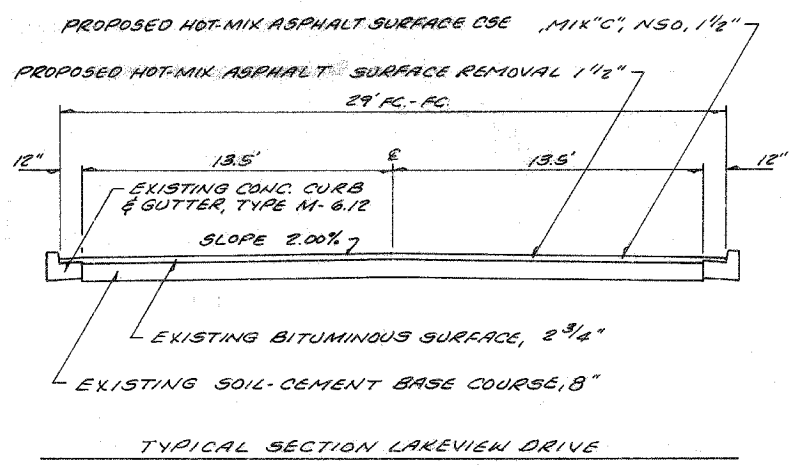
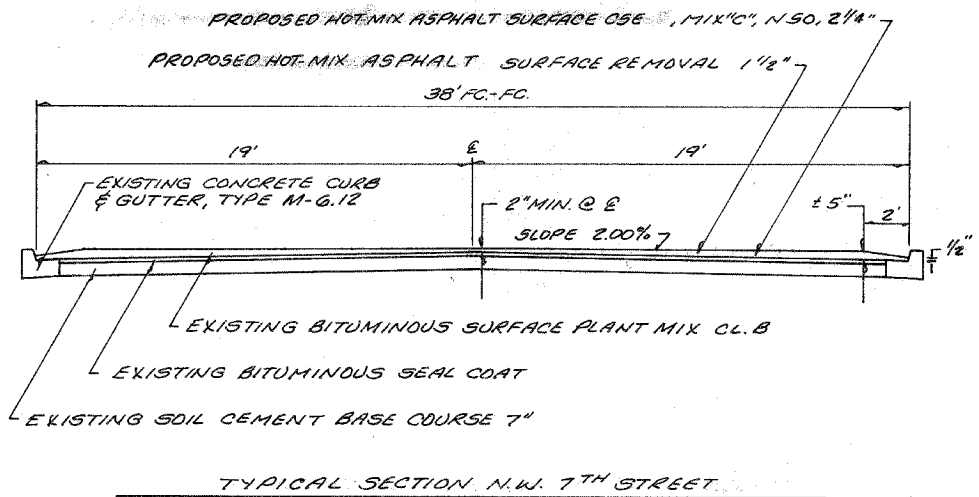
SUMMARY OF QUANTITIES (LAKEVIEW)			
QNTY	UNIT	ITEM	CODE
483	GALLON	BITUMINOUS MATERIALS (PRIME COAT)	40600100
10	TON	AGGREGATE (PRIME COAT)	40600300
417	TON	HOT-MIX ASPHALT SURFACE COURSE, MIX "C", N50	40603310
4,833	SQ YD	HOT-MIX ASPHALT SURFACE REMOVAL 1½"	44000006

SUMMARY OF QUANTITIES (SHOREWAY)			
QNTY	UNIT	ITEM	CODE
330	GALLON	BITUMINOUS MATERIALS (PRIME COAT)	40600100
7	TON	AGGREGATE (PRIME COAT)	40600300
285	TON	HOT-MIX ASPHALT SURFACE COURSE, MIX "C", N50	40603310
3,303	SQ YD	HOT-MIX ASPHALT SURFACE REMOVAL 1½"	44000006
1	EACH	MANHOLES TO BE ADJUSTED	60255500

SUMMARY OF QUANTITIES (MT. VERNON RD.)			
QNTY	UNIT	ITEM	CODE
345	GALLON	BITUMINOUS MATERIALS (PRIME COAT)	40600100
7	TON	AGGREGATE (PRIME COAT)	40600300
149	TON	LEVELING BINDER (MACHINE METHOD), N50	40600625
297	TON	HOT-MIX ASPHALT SURFACE COURSE, MIX "C", N50	40603310
2222	SQ YD	HOT-MIX ASPHALT SURFACE REMOVAL 1½"	44000155

CITY	FAIRFIELD	TOTAL SHEETS	3	SHEET NO.	3
SECTION	06-00043-00-R5				
STA.		TO STA.			

N.W. 7TH STREET



THERMOPLASTIC MARKINGS

4" YELLOW LINE	= 580 FOOT
12" YELLOW LINE	= 63 FOOT
6" WHITE LINE	= 84 FOOT
24" WHITE LINE	= 15 FOOT
TURN ARROW	= 26 50.FT
C-LINE STRIPE	= 420 FOOT

REMOVE EXISTING THERMOPLASTIC MARKING ON EXISTING CONCRETE PAVEMENT. COST INCLUDED.

